

Sutter Bypass Challenges and Opportunities

PRESENTATION



Presented By
Kjeldsen, Sinnock & Neudeck, Inc.
October 25, 2018

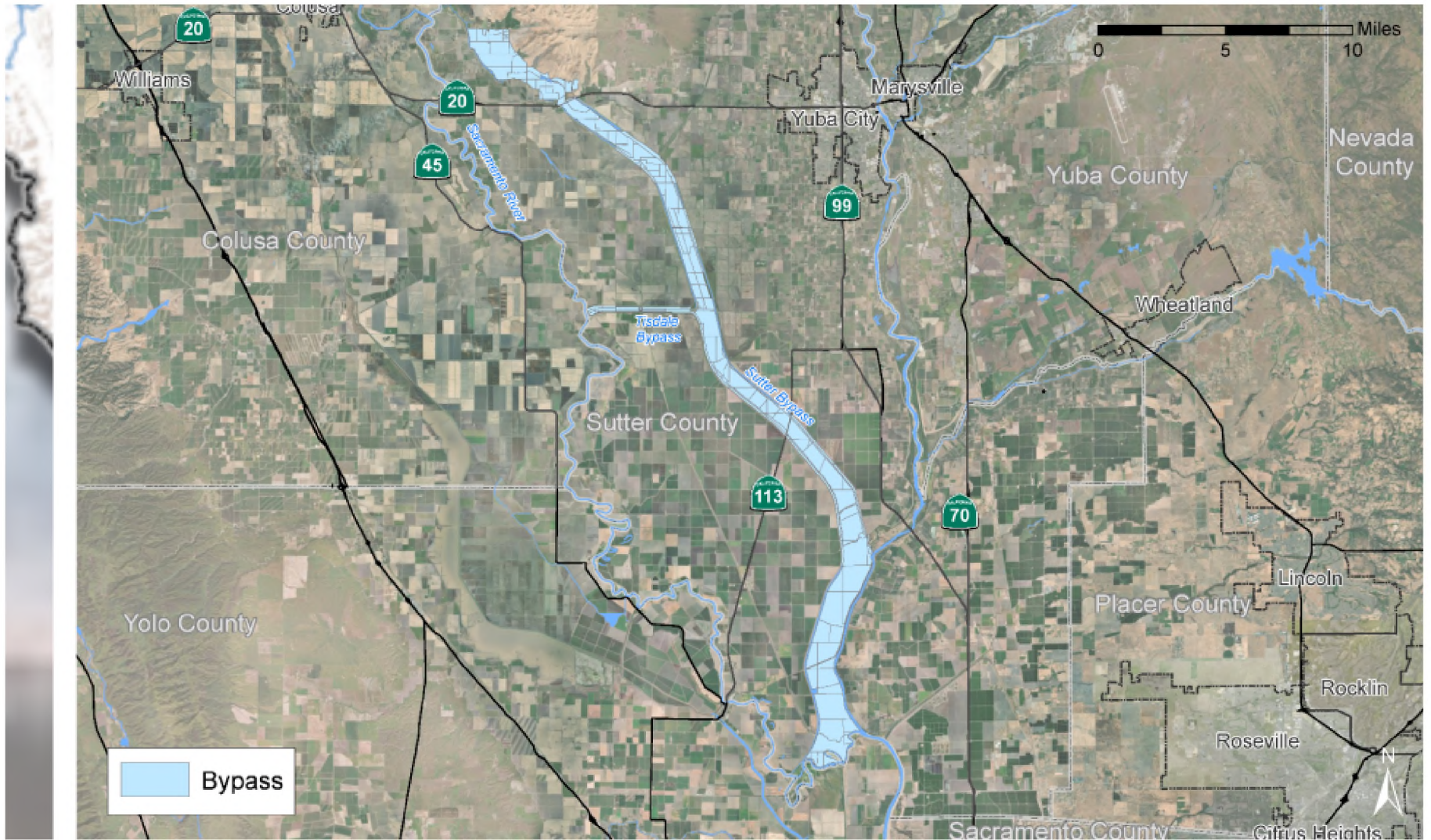
MUSR RFMP Region

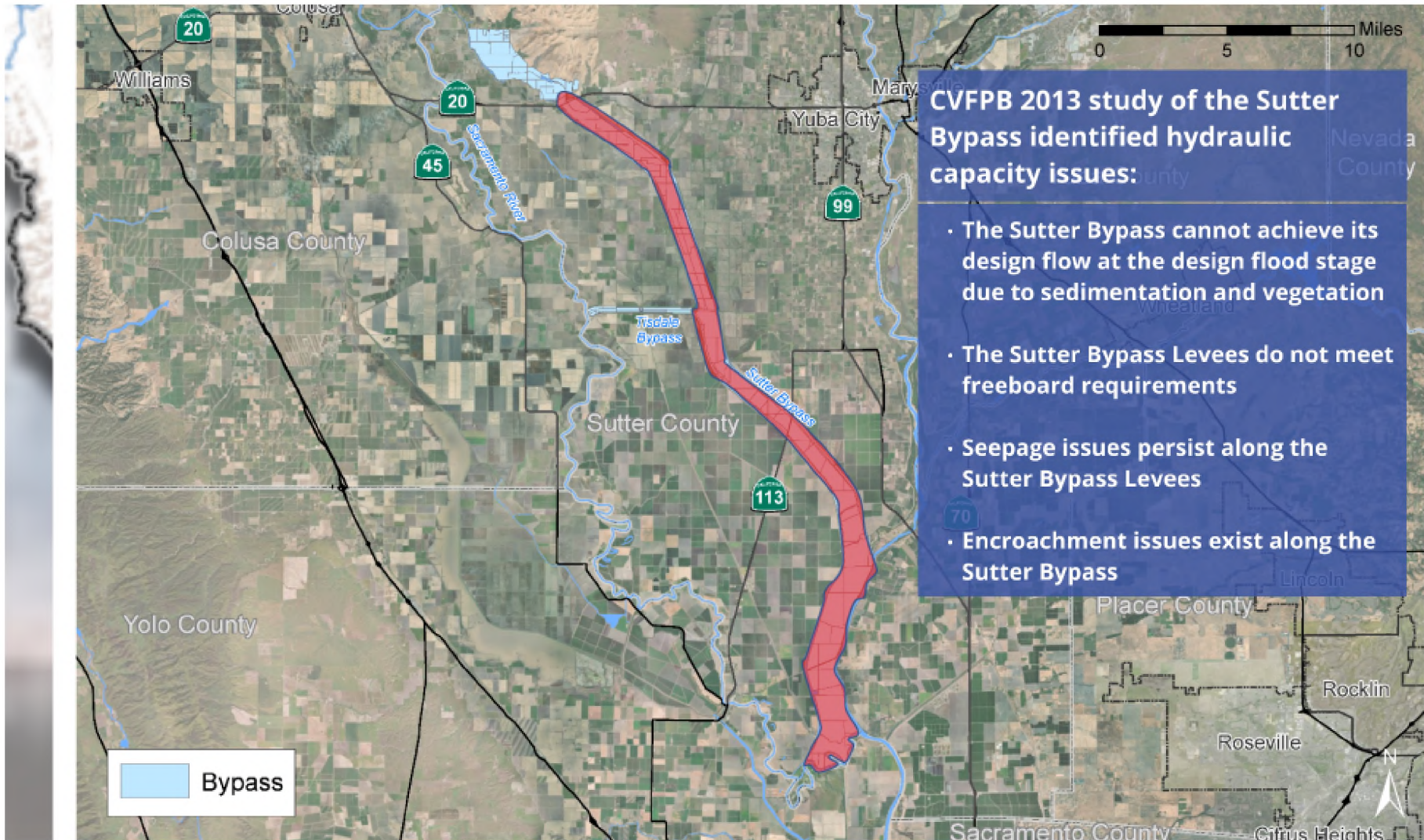


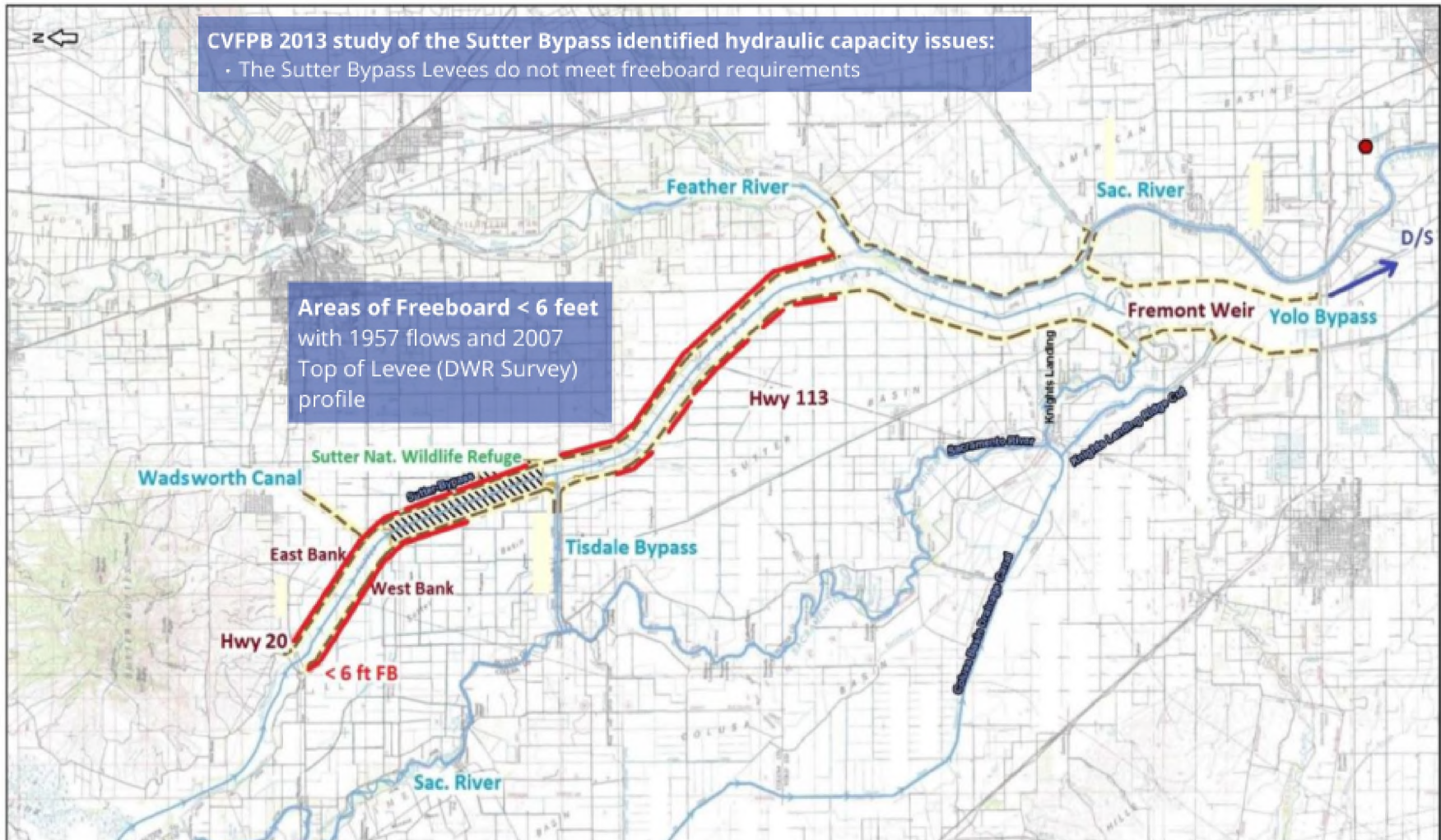
Challenges

Bypass Area
Summaries

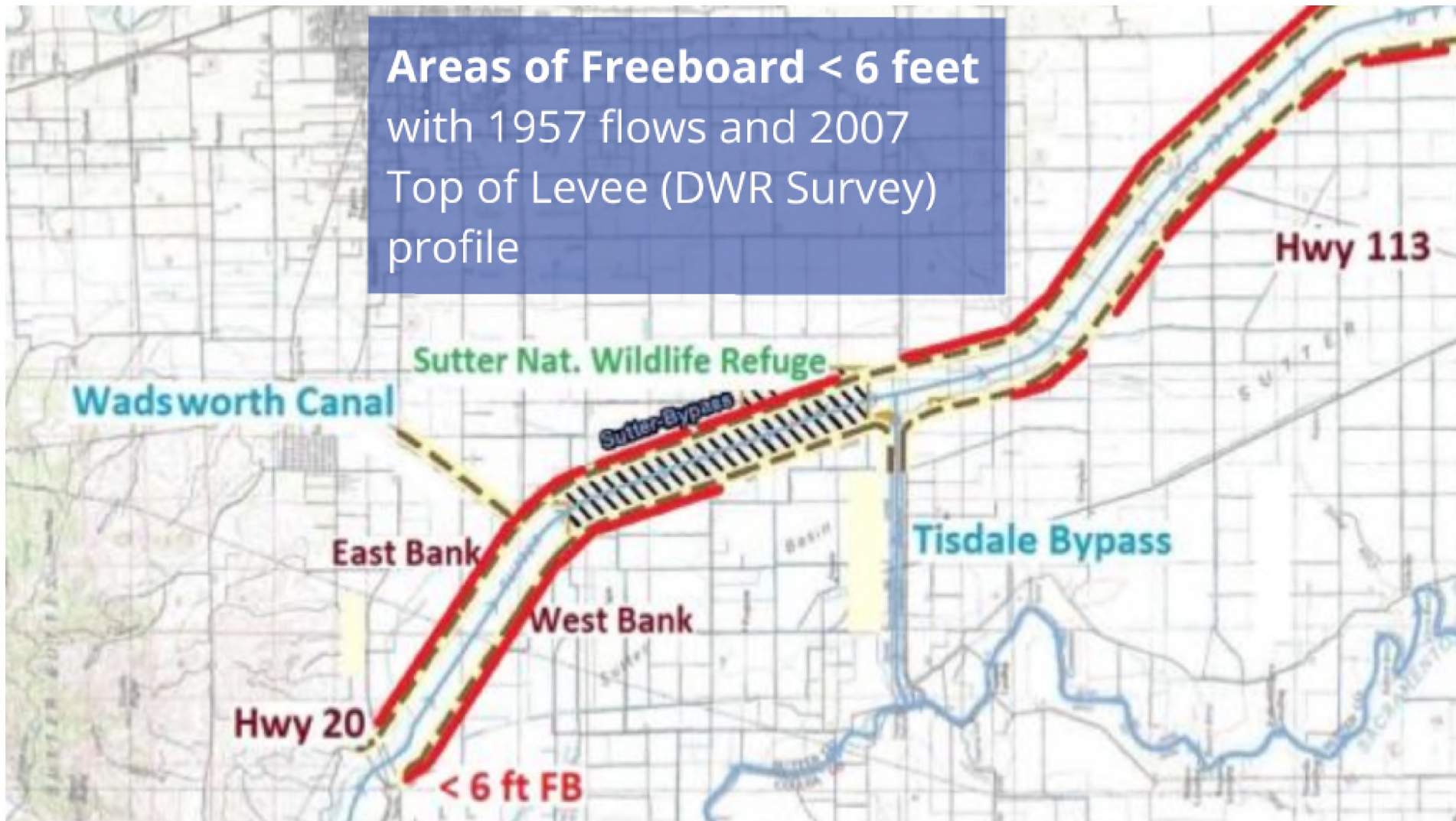








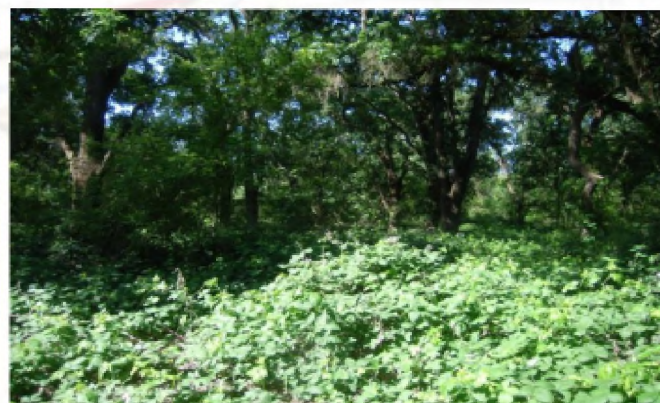
Areas of Freeboard < 6 feet
with 1957 flows and 2007
Top of Levee (DWR Survey)
profile



Areas of Freeboard < 6 feet
with 1957 flows and 2007
Top of Levee (DWR Survey)
profile

Hwy 113

Wadsworth Can



Hwy 20

< 6 ft FB

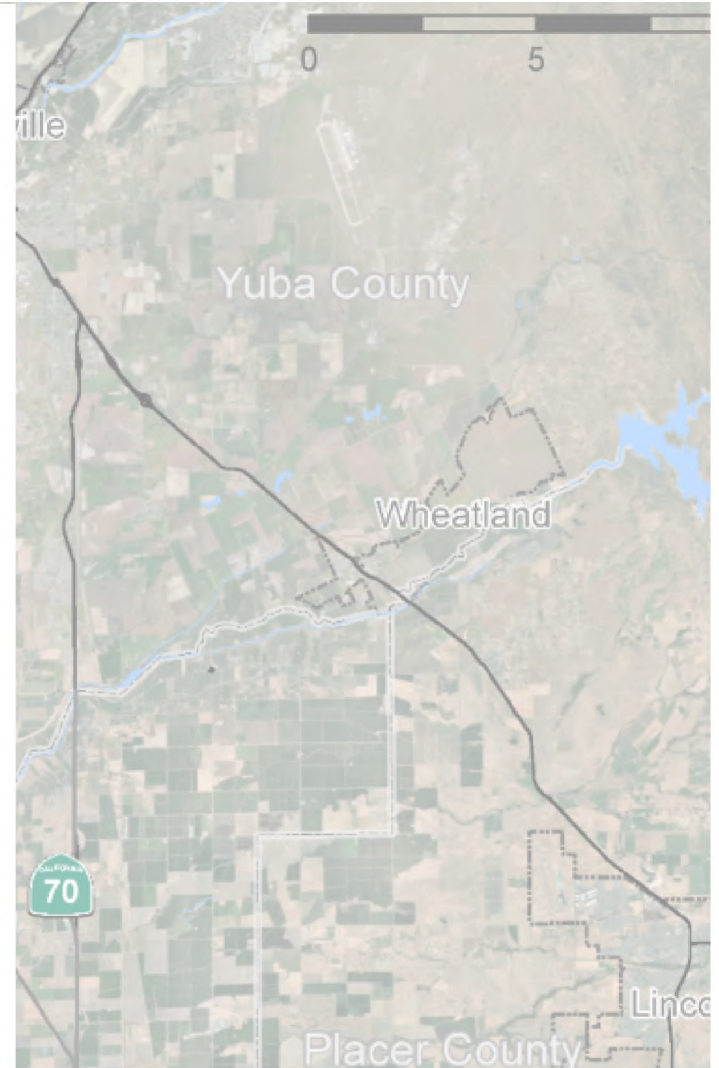
Maintenance Challenges



O&M Issues

- DWR's RMA now executed
- Cumulative impacts issue needs to be addressed
- How to fund mitigation maintenance costs
- Safe Harbor agreements needed before new habitat projects are implemented
- O&M Funding
- Encroachment management
- Local agency levee maintenance funding

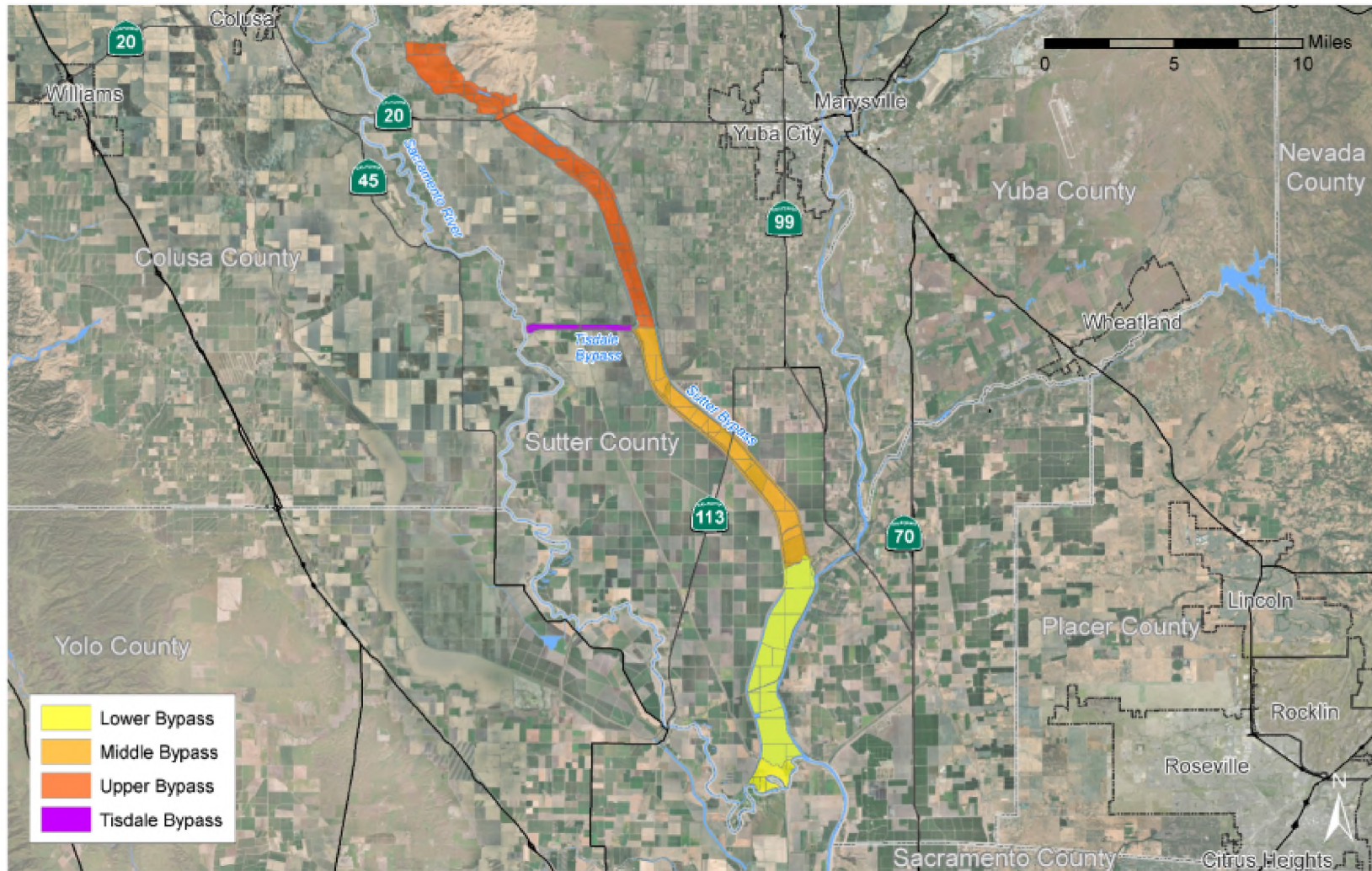
Sutter Bypass Landownership

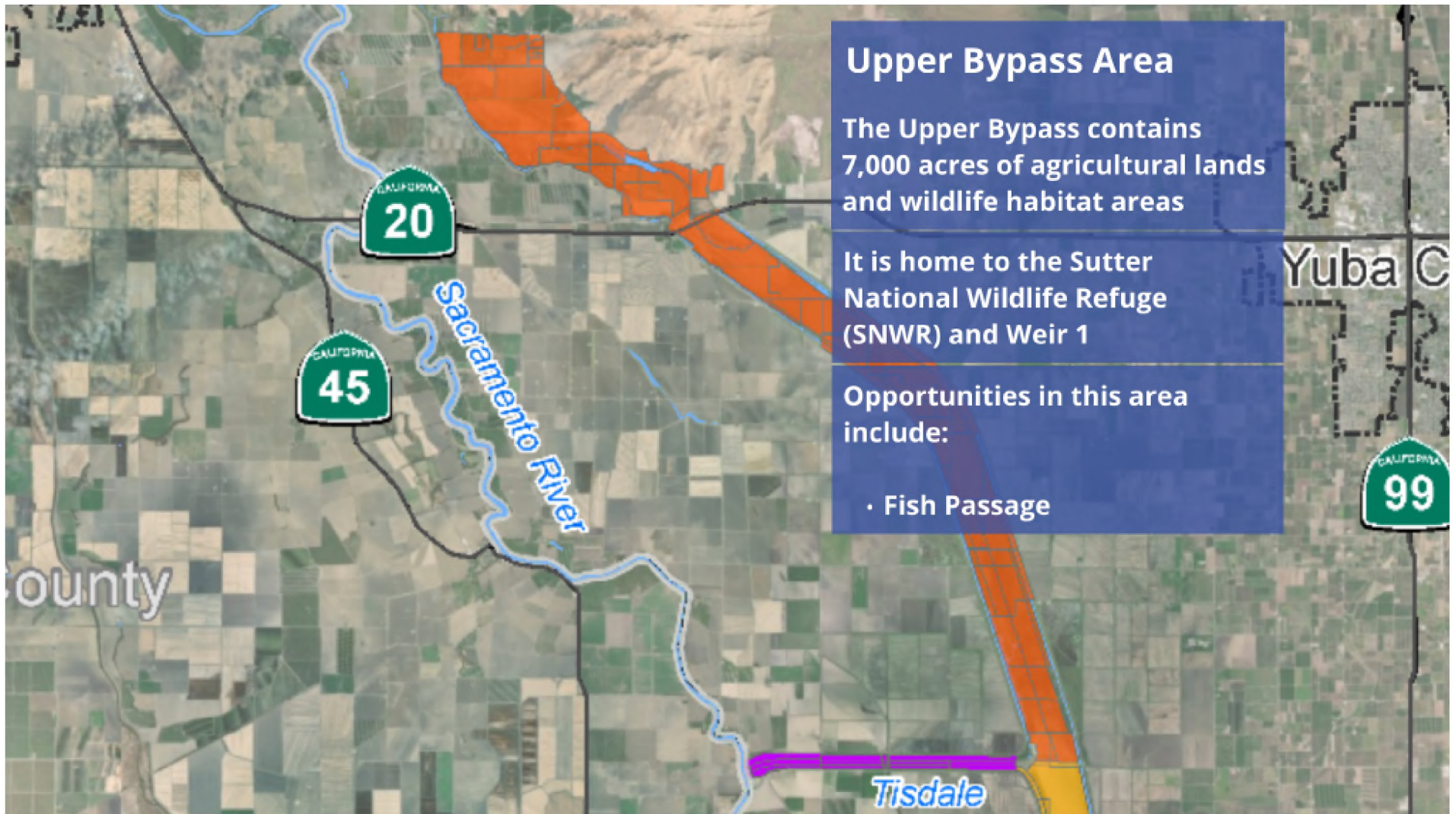


Fish Passage Challenges









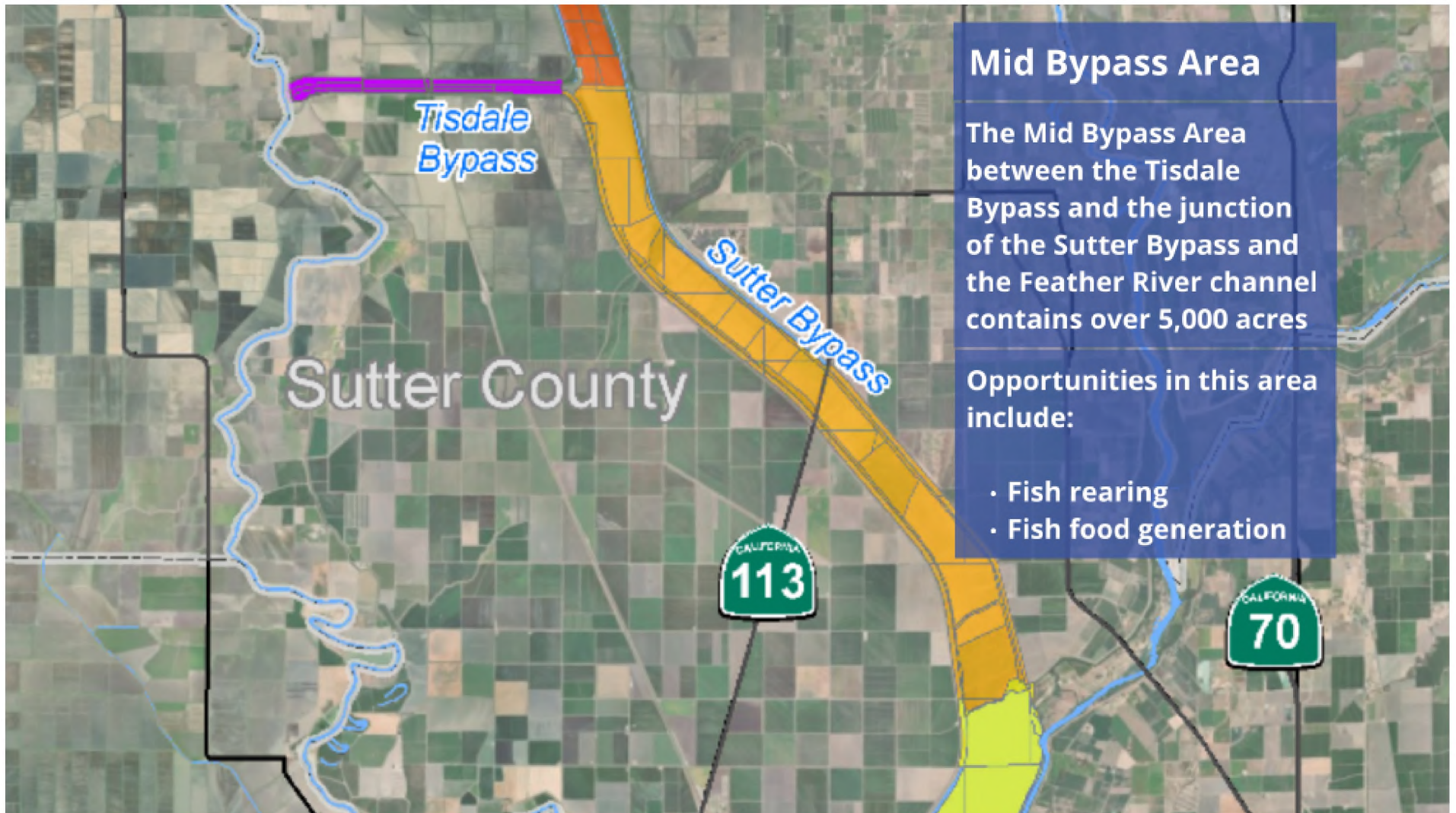
Upper Bypass Area

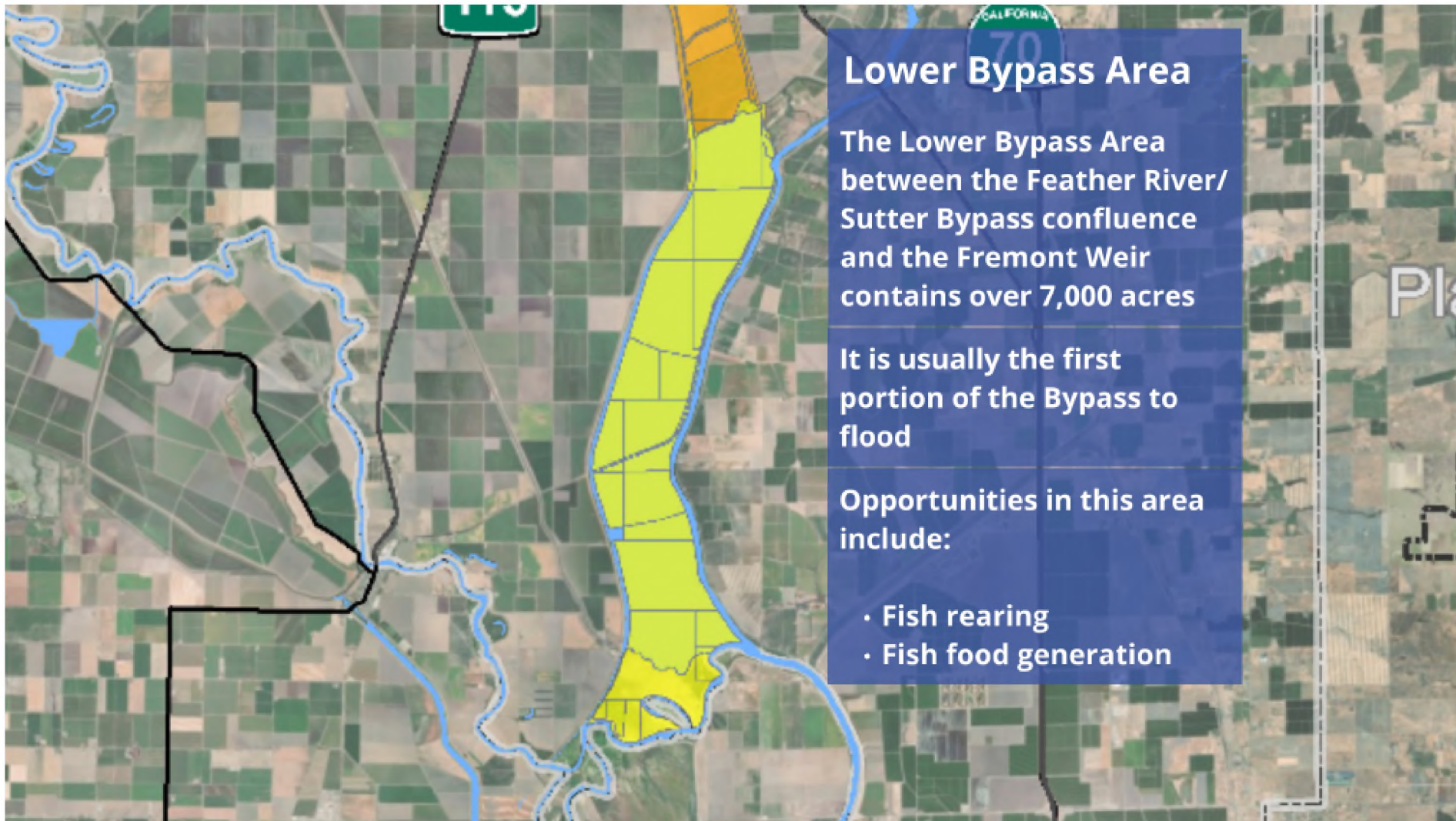
The Upper Bypass contains 7,000 acres of agricultural lands and wildlife habitat areas

It is home to the Sutter National Wildlife Refuge (SNWR) and Weir 1

Opportunities in this area include:

- Fish Passage





Lower Bypass Area

The Lower Bypass Area between the Feather River/ Sutter Bypass confluence and the Fremont Weir contains over 7,000 acres

It is usually the first portion of the Bypass to flood

Opportunities in this area include:

- Fish rearing
- Fish food generation

Tisdale Weir & Bypass Area

The Tisdale Weir & Bypass Area is a 500 acre channel, not currently in agricultural use

After the weir stops flowing, every species of Sacramento Valley Salmonid and listed green sturgeon become stranded behind the structure

Opportunities in this area include:

- Creating a breach in a short segment of the fixed weir that would encourage fish rearing habitats without impacting ag lands
- Fish rearing
- Fish food generation

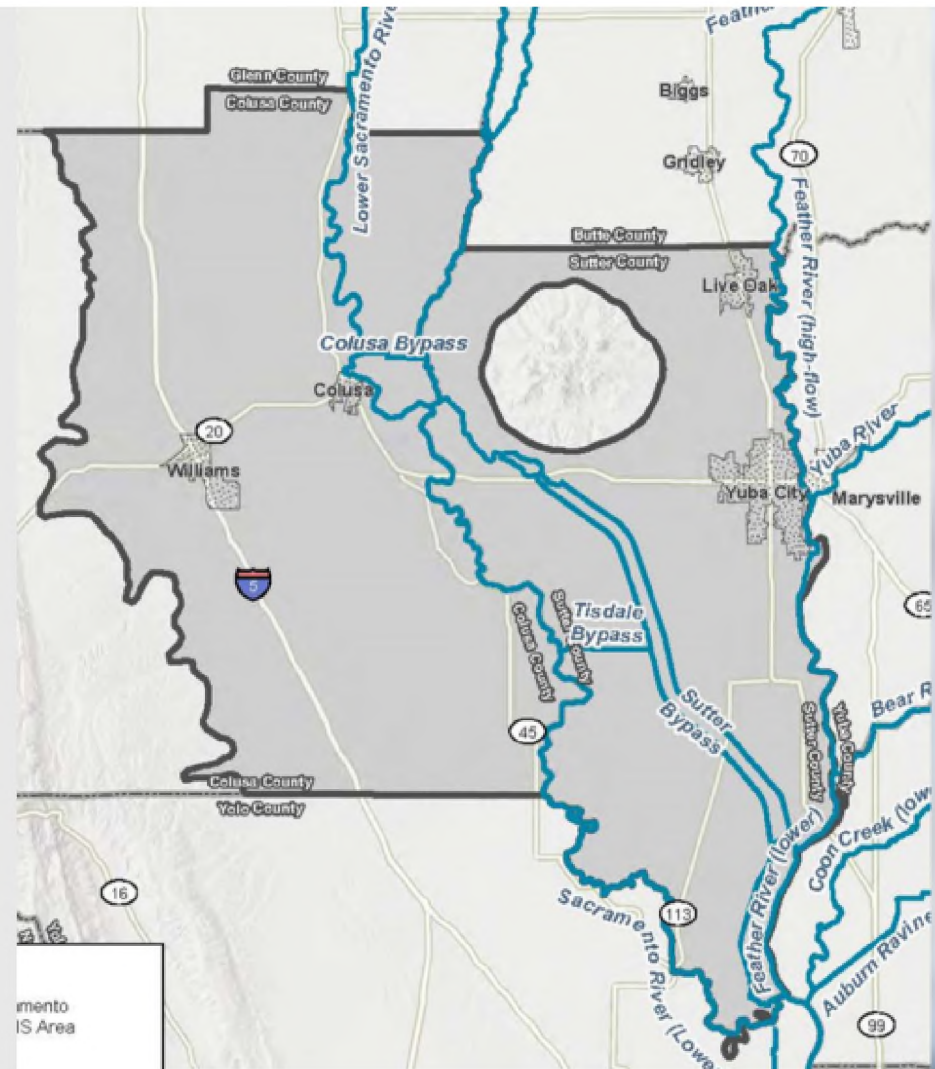


Tisdale Bypass

Sutter County

Next Steps

- Mid Sacramento Valley Regional Conservation Investment Strategy



Next Steps

- Tisdale Bypass Management Plan
- A pilot project for an overall Bypass Management Plan

