

SBFCA APPROACH TO OMRR&R OBLIGATIONS

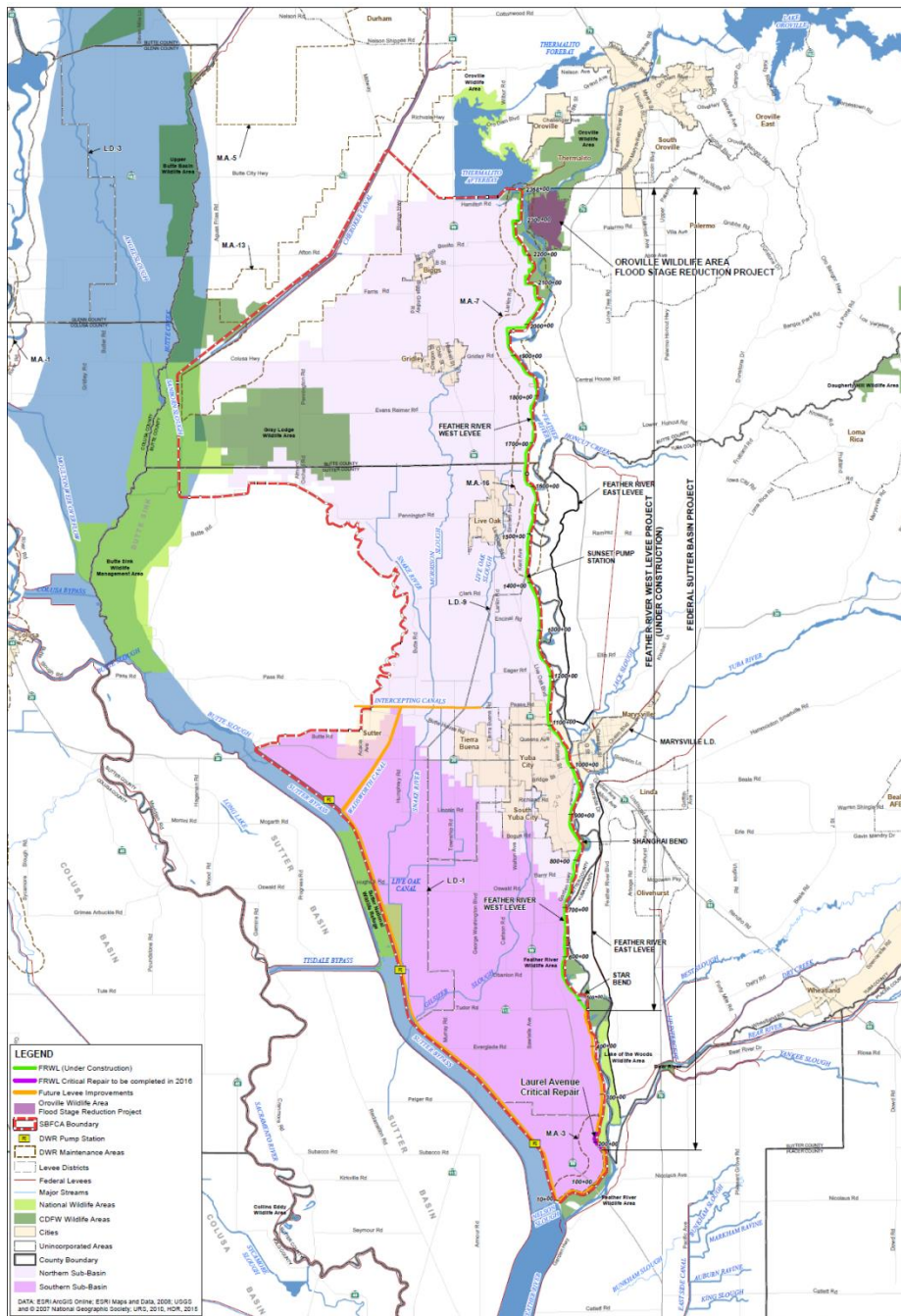
Coordinating Committee

January 24, 2018



SOME CONTEXT...

- Basin surrounded by State/federal levees
- OMRRR
 - LMA's (Prop 218 Assessment)
 - MA's (Direct Assessment)
 - WC8361 (General Fund)
- Capital Projects
 - 408 (FRWLP, FSRP, State Emergency)
 - Corps Civil Works
 - Corps PL84-99
 - Corps Sac Bank (primarily other reaches of Sac)



HOW IS SBFCA OBLIGATED?

- UFRR/EIP Funding Agreement
 - Agreement to agree
 - Retention
- Corps 408 permission
- Corps PPA for federally authorized Civil Works project
- PL 84–99 eligibility
- FEMA accreditation



LMA APPROACH TO OMRR&R

- OMRRR(R)
 - “Maintenance” is routine RRR
 - Capital projects beyond funding capacity of LD1 /9
 - Levee breaches
 - Deep underseepage repairs
 - Large erosion repairs
 - Unforeseen flood events
- Large funding gap between State Assurances to the Corps and actual LMA capability
- Following funding bridges the funding gap:
 - PL84/99
 - State (General Fund) annual appropriations
 - Historic funding for emergencies where repair is in the best interest of the State
- Prop 218 election is already necessary for OMRRR(R), never mind gap projects to meet State Assurances



LD1 OMRRR(R) TASKS

- BMP's (i.e. silt fence, waddles, straw, rock entrance)
- Erosion control seeding
- Pesticide application
- Weed control (herbicides and sterilant) application
- Grouting (cement and bentonite material) of rodent holes
- Asphalt roadway O&M
- Grazing sheep
- Grazing goats
- Tree Pruning
- Mowing and weed control
- Burning
- Relief well abandonment
- Relief well O&M and pump testing. – required periodic development of wells
- Piezometer O&M
- Inclinometer O&M
- Placement of public access barriers (K-rail or boulders)
- Disking fire breaks
- Rodent hole repair less than 1.5 feet depth – requires minor excavation and earthwork backfill
- Squirrel hole repair less than 1.5 feet depth – requires minor excavation and earthwork backfill
- Tree removal less than or equal to 6 inches diameter – requires minor excavation and earthwork backfill
- Ground preparation for concrete block (access barrier) placement
- Vault hatch and/or maintenance hole replacement and/or repair
- Levee mile marker installation, replacements, and/or repair
- Sign installation, replacement, and/or repair
- Patrol road O&M – grading and minor earthwork on patrol roads
- Gate and fence installation and maintenance
- Bollard installation and maintenance
- Flood control structure O&M
- Rip-rap O&M
- Pump station O&M
- Habitat restoration O&M
- Aggregate base – minor grading, placement of rock, and compaction
- Concrete ditch O&M
- Retaining wall O&M
- Pipe crossing O&M
- Relief Well Abandonment
- Observation Well Abandonment
- Dragging levee slopes and O&M Roads
- Discing waterside patrol road – O&M on road and maintain fire break
- Scraping and grading levee crowns and toe roads.
- Tree planting
- Rodent hole repair greater than 1.5 to 4 feet in depth – requires excavation and earthwork backfill
- Squirrel hole repair greater than 1.5 to 4 feet in depth – requires excavation and earthwork backfill
- Tree and root removal greater than 6 inches diameter – requires excavation and earthwork backfill
- Removal of imbedded flood debris in levees greater than 1.5 to 4 feet in depth – requires minor excavation and earthwork backfill
- Slip repair – requires minor excavation and earthwork backfill
- Crack repair – requires minor excavation and earthwork backfill
- Backfill unauthorized excavations greater in depth than 1.5 to 4 feet (i.e. children's forts, scrap metal recovery, homeless camp slit trench toilet pipes, garbage pits)
- Potholing for geotechnical exploration
- Borings for geotechnical exploration
- Dozer work on waterside patrol road – O&M on road and maintain fire break
- Backfill unauthorized excavations greater than 4 feet in depth (i.e. children's forts, scrap metal recovery, homeless camp slit trench toilet pipes, garbage pits)
- Erosion repair greater than 4 feet in depth – requires minor excavation and earthwork backfill
- Slope repair greater than 4 feet in depth – requires minor excavation and earthwork backfill
- Relief well construction

