

Inspection requirements as related to the Operation and Maintenance Manual and the Code of Federal Regulations

Ryan Larson, PE

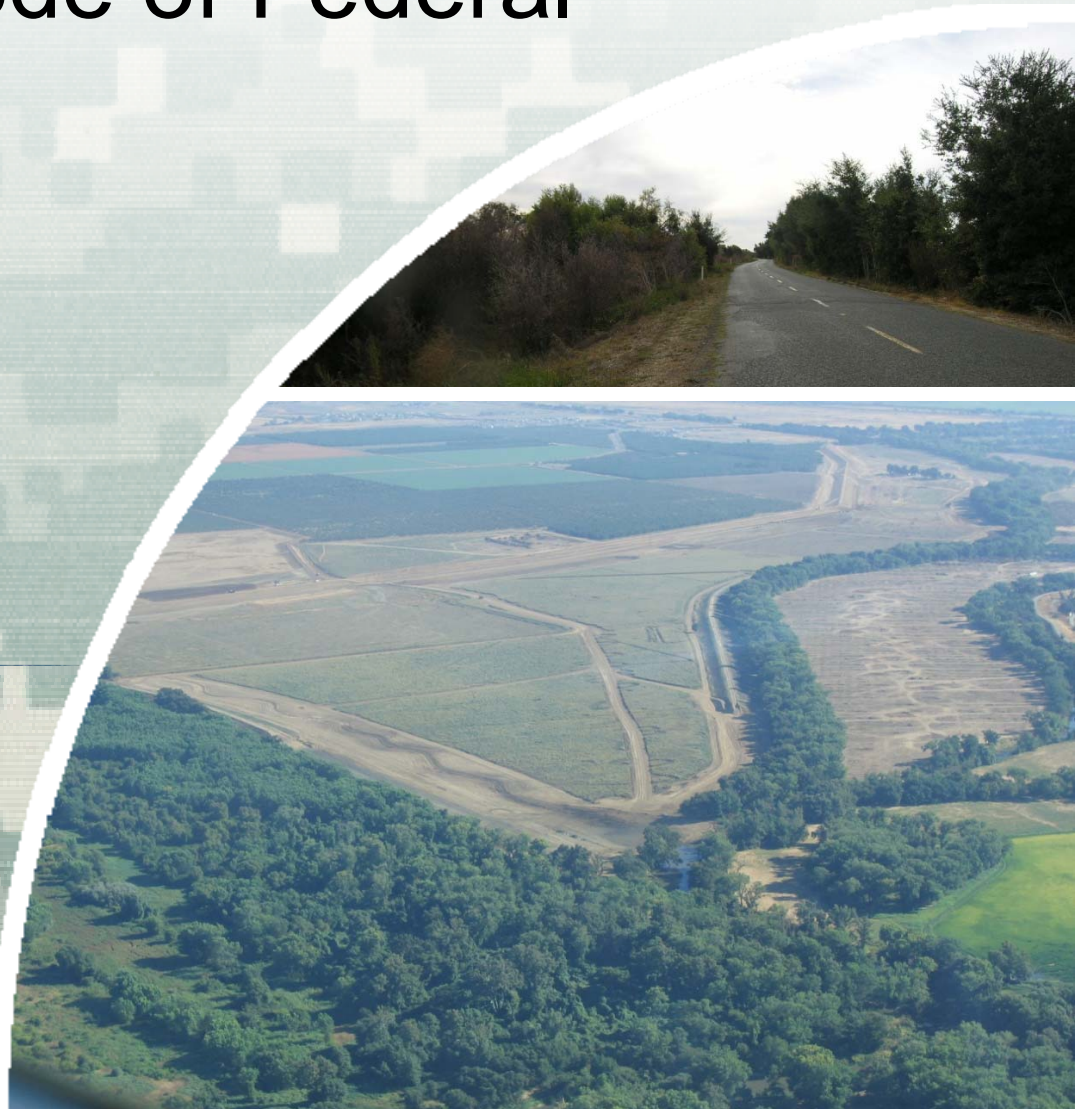
Flood Protection and Navigation Section

Sacramento District

February 28, 2018



US Army Corps of Engineers
BUILDING STRONG®



Code of Federal Regulations

- 33 CFR 208.10
- Local flood protection works; maintenance and operation of structures and facilities
 - ▶ Levees
 - ▶ Floodwalls
 - ▶ Drainage structures
 - ▶ Closure structures
 - ▶ Pumping plants
 - ▶ Channels and floodways
 - ▶ Miscellaneous facilities



BUILDING STRONG®

O&M- What, when, and why

- 33 CFR 208.10:
- “The structures and facilities constructed by the United States for local flood protection shall be **continuously maintained** in such a manner and **operated** at such times and for such periods as may be necessary to **obtain the maximum benefits.**”



BUILDING STRONG®

O&M- Who and where

- The entity that furnishes assurances to maintain and operate the flood control works in accordance with regulations shall appoint a “Superintendent.”
- The Dept of Army will furnish an O&M Manual for each completed project to assist in carrying out obligations



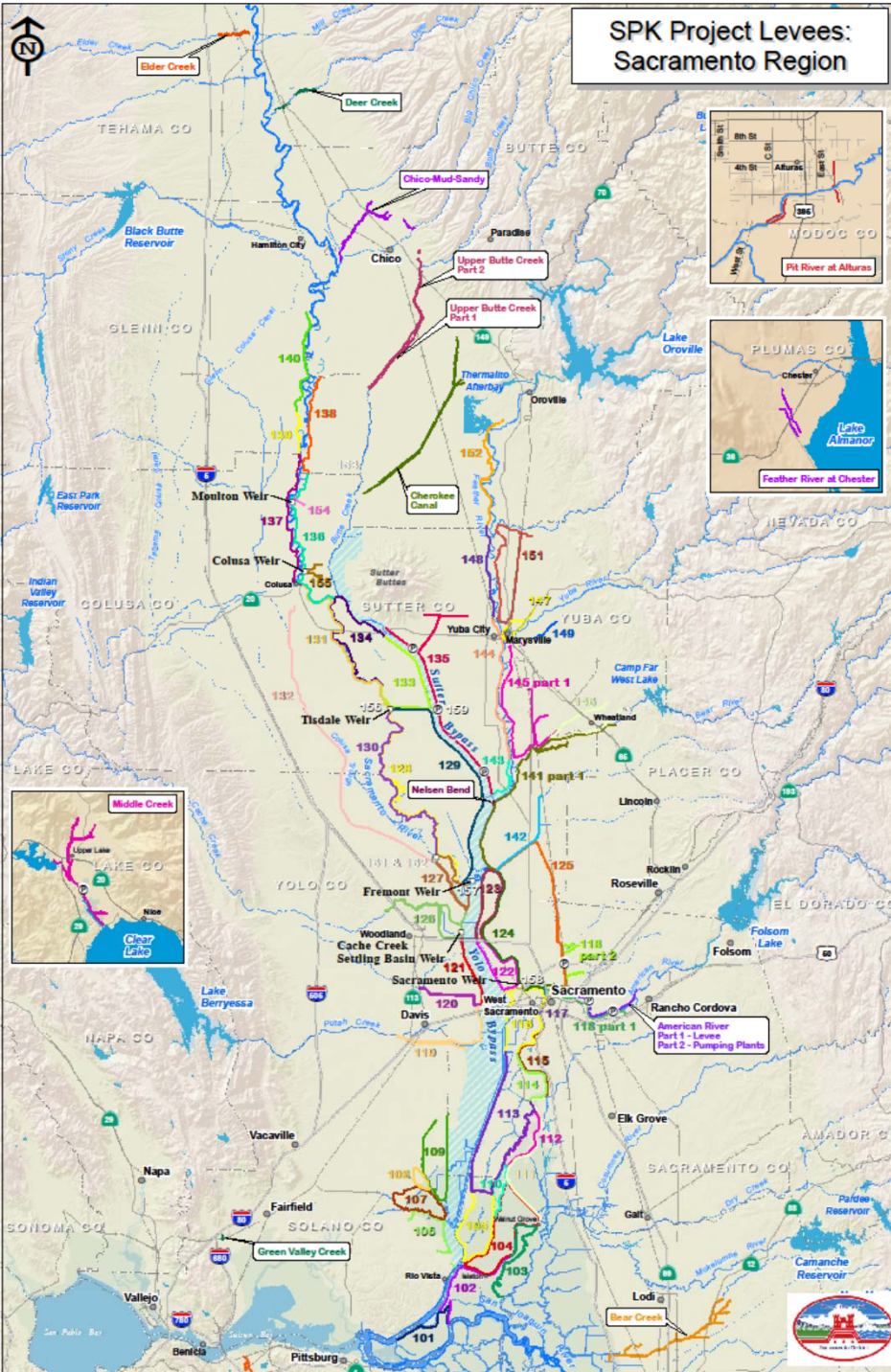
BUILDING STRONG®

O&M Manuals

- Sacramento River Flood Control Project
- Lower San Joaquin River Levees, Lower San Joaquin River and Tributaries Project, California
 - ▶ Standard Manuals with Supplements- further define Operations and Maintenance requirements.



BUILDING STRONG®



O&M Manuals

- Current Engineer Regulation (ER) for preparing O&M Manuals
 - ▶ ER 1110-2-401
- Defines:
 - Repair- considered to entail those activities of a routine nature that **maintain** the project in a well kept condition
 - Replacement- covers those activities taken when a worn out element or portion thereof is replaced
 - Rehabilitation- refers to a set of activities as necessary to bring a deteriorated project back to its original condition.



BUILDING STRONG®

O&M Requirements vs. PL84-99 Eligibility

- All requirements as written in the O&M Manual
- For levees, A or MA ratings in:
 - Encroachments
 - Closure Structures
 - Slope Stability
 - Erosion/Bank Caving
 - Animal Control
 - Culverts/Discharge Pipes
 - Underseepage Relief Wells/ Toe Drainage Systems



BUILDING STRONG®

	<p>System: XYZ</p> <p>System Rating: Minimally Acceptable</p> <p>Approved SWIF/LOI: No</p> <p>PL 84-99 RP Eligibility: Active</p>								
		Segment A	Segment B	Segment C	Segment D				
General	Operations and Maintenance Manuals	A	A	A	A				
	Emergency Supplies and Equipment	A	A	A	A				
	Flood Preparedness and Training	A	A	A	A				
Levee - Items Affecting PL 84-99 RP Eligibility	Encroachments	M	M	M	M				
	Closure Structures	A	NA	NA	NA				
	Slope Stability	M	A	A	A				
	Erosion/Bank Caving	A	M	A	M				
	Animal Control	A	A	A	A				
	Culverts/Discharge Pipes	NA	NA	NA	NA				
	Underseepage Relief Wells/Toe Drainage Systems	NA	NA	NA	NA				
Levee Embankments - Other Items	Vegetation Growth	A	M	M	M				
	Sod Cover	A	A	A	M				
	Settlement	A	A	A	A				
	Depressions/Rutting	A	M	A	M				
	Cracking	A	A	A	A				
	Riprap Revetments & Bank Protection	NA	NA	NA	NA				
	Revetments other than Riprap	NA	NA	NA	NA				
	Seepage	A	A	A	A				
Legend A Acceptable M Minimally Acceptable U Unacceptable NA Not Applicable RP Rehabilitation Program (Note: flood fight assistance available regardless of eligibility status)		M	Includes Unacceptable observations not likely to prevent performance in next flood event.						
		U	Serious deficiency noted in past inspection report has not been corrected within the established timeframe / Inactive						
		U	Likely prevents performance in next flood event / Inactive						



BUILDING STRONG®

Inspections

- Immediately prior to the beginning of the flood season
- Immediately following each major high water period
- Otherwise, intervals not exceeding 90 days



BUILDING STRONG®

Questions/ Discussion



BUILDING STRONG®