

Inspection and Local Maintaining Agency Report

Presentation to the CVFPB

January 23, 2015

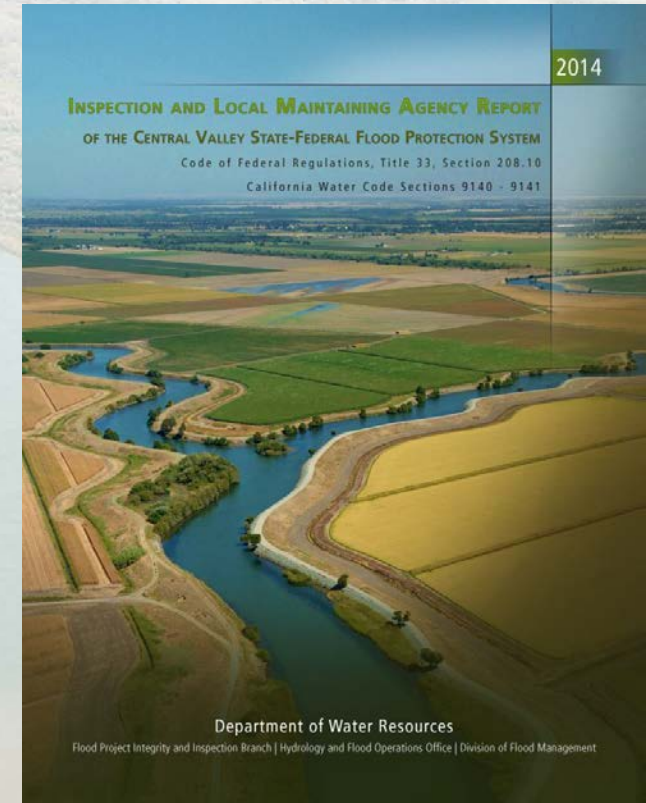
Nekane Hollister and David Pesavento

Agenda

- Report Overview
- LMA Summary Profiles
- Inspection Results
- LMA Reporting Results
- Branch Achievements

Report Overview

- Combined Report
- Reader's Guide
- LMA Annual Reporting
- DWR Inspections
- Other FPIIB Activities
- LMA Summary Profiles



Types of LMAs/Areas

- RD: Reclamation District
- LD: Levee District
- NA: Named Area
- MA: Maintenance Area
 - Water Code 8361
- ST: State maintained Area
 - Water Code 12878

LMA Summary Profiles

- Area Name, LMA, County, Contact
- Map, Area Units
- Threat Assessment & Recommendations
- Points of Interest
- DWR Levee Inspection
- DWR Structure & Channel Inspection
- Erosion
- USACE Inspections
- LMA Five Part Reporting

San Joaquin County Flood Control and Water Conservation District

San Joaquin County

Contact

Tom Gau
Public Works Director
1810 East Hazelton Ave
Stockton CA 95205
Phone: (209) 953-7617

SAN JOAQUIN SYSTEM : San Joaquin County Flood Control and Water Conservation District

San Joaquin
County



SAN JOAQUIN SYSTEM : San Joaquin County Flood Control and Water Conservation District

LMA Short Name : NA0017

Bank Unit Length (Miles)

Unit No. 01	Littlejohn Creek	LB	2.59
Unit No. 02	Littlejohn Creek	RB	3.20
Unit No. 06	SPRR Drain	LB	0.46
Unit No. 07	Bear Creek	RB	16.07
Unit No. 08	Bear Creek	LB	15.32
Unit No. 09	Paddy Creek	LB	1.53
Unit No. 10	Paddy Creek	RB	1.41
Unit No. 11	North Paddy Creek	RB	3.53
Unit No. 12	North Paddy Creek	LB	3.51
Unit No. 13	Middle Paddy Creek	LB	1.38
Unit No. 14	Middle Paddy Creek	RB	1.38
Unit No. 15	Mormon Slough	RB	25.38
Unit No. 16	Mormon Slough	LB	23.43
Unit No. 17	Potter Creek	RB	0.86
Unit No. 18	Potter Creek	LB	0.91

San Joaquin
County

Threat Assessment & Recommendations

- There is a significant erosion site in this Area that should be monitored.
- The LMA should focus on repairing erosion sites.
- The LMA should focus more on controlling vegetation to maintain visibility and access.
- The LMA should work with landowners and the CVFPB to control unauthorized encroachments.
- The LMA should ensure that the capacity of the channel as designed and constructed is maintained.
- The LMA should continue to maintain the area at the high level seen during the last Structure inspection.

DWR Levee Inspection Summary

NA0017	Total LMA Miles 100.95											
Rated Item	Fall 2013				Fall 2014				Change			
	Overall LMA Rating M *				Overall LMA Rating M *							
	M Miles	U Miles	M+4U Miles	Thresh. %	M Miles	U Miles	M+4U Miles	Thresh. %	M Miles	U Miles	M+4U Miles	Thresh. %
<i>Earthen Levees</i>												
Vegetation	0.05		0.05	0.05	1.64		1.64	1.63	1.59		1.59	1.58
Trim / Thin Trees	0.03		0.03	0.03	0.28		0.28	0.28	0.25		0.25	0.25
Encroachments	0.99		0.99	0.95	0.81		0.81	0.80	-0.18		-0.18	-0.15
Animal Control	0.45	0.03	0.57	0.55	0.62	0.04	0.78	0.77	0.17	0.01	0.21	0.22
Slope Stability	0.26		0.26	0.25	0.38		0.38	0.38	0.12		0.12	0.13
Erosion / Bank Caving	0.43	0.01	0.47	0.45	0.38		0.38	0.38	-0.05	-0.01	-0.09	-0.08
Cracking	0.13		0.13	0.13					-0.13		-0.13	-0.13
Crown Surface / Depressions / Rutting	0.06		0.06	0.06	0.06		0.06	0.06				0.00
<i>Interior Drainage & Piping Systems</i>												
Vegetation & Obstructions						0.01	0.04	0.04		0.01	0.04	0.04
<i>Concrete Floodwalls</i>												
Monolith Joints	0.13		0.13	0.13	0.17		0.17	0.17	0.04		0.04	0.04
<i>Structures & Concrete Lined Channels</i>												
Security Fencing					0.01		0.01	0.01	0.01		0.01	0.01
<i>Channels</i>												
Vegetation & Obstructions	0.01		0.01	0.01	0.01		0.01	0.01				0.00
<i>Supplemental</i>												
DWR Erosion Survey	1.18	0.75	4.18	4.02	1.24	0.77	4.32	4.28	0.06	-0.02	0.14	0.26
DWR UCIP Field Study												0.00
LMA Totals:	3.72	0.79	6.88	6.62*	5.60	0.82	8.88	8.80*	1.88	0.03	2.00	2.18

* Overall LMA Threshold Percent is less than 10.00%; however, U Rated Miles are present, so the Overall LMA Rating is M instead of A.

SAN JOAQUIN SYSTEM : San Joaquin County Flood Control and Water Conservation District

San Joaquin
County

DWR Structure Inspection Summary

Structure Name	Overall Rating
Duck Creek Diversion Weir And Control Structure	A
Mormon Slough Pumping Plant No. 1	A
Mormon Slough Pumping Plant No. 2	A
Mormon Slough Pumping Plant No. 3	A

DWR Channel Inspection Summary

Channel Name	Overall Rating
Duck Creek Diversion Channel	A
North Littlejohn Creek	M
South Littlejohn Creek	M
South Littlejohn Creek North Branch	A

DWR San Joaquin River Erosion Summary

Unit No. 15 Mormon Slough, RB

Site ID	River Mile	Levee Mile Start	Levee Mile End	Issue Type	Status	Rating
NA0017U15RM22.91	22.91	0.41	1.32	River Erosion	Existing Site	M
NA0017U15RM14.49	14.49	8.43	8.43	River Erosion	Existing Site	M
NA0017U15RM13.87	13.87	8.93	8.95	River Erosion	New Site	M

Unit No. 16 Mormon Slough, LB

Site ID	River Mile	Levee Mile Start	Levee Mile End	Issue Type	Status	Rating
NA0017U16RM23.35	23.35	0.12	0.48	River Erosion	Existing Site	U
NA0017U16RM22.74	22.74	0.97	0.99	River Erosion	Existing Site	U
NA0017U16RM22.58	22.58	1.13	1.13	River Erosion	Existing Site	U
NA0017U16RM22.15	22.15	1.59	1.59	River Erosion	Existing Site	M
NA0017U16RM22.01	22.01	1.74	1.75	River Erosion	Existing Site	U
NA0017U16RM21.95	21.95	1.75	1.76	River Erosion	Existing Site	M
NA0017U16RM21.94	21.94	1.77	1.78	River Erosion	Existing Site	M
NA0017U16RM21.05	21.05	1.93	1.95	River Erosion	Existing Site	M
NA0017U16RM20.71	20.71	2.31	2.32	River Erosion	Existing Site	M
NA0017U16RM20.62	20.62	2.37	2.38	River Erosion	Existing Site	U
NA0017U16RM20	20	3.00	3.06	River Erosion	Existing Site	U
NA0017U16RM19.29	19.29	3.61	3.61	River Erosion	New Site	M
NA0017U16RM19.28	19.28	3.78	3.78	River Erosion	Existing Site	M
NA0017U16RM19.23	19.23	3.84	3.85	River Erosion	Repaired Site	C
NA0017U16RM19.18	19.18	3.89	3.91	River Erosion	Existing Site	M
NA0017U16RM18.69	18.69	4.32	4.34	River Erosion	Existing Site	U
NA0017U16RM17.99	17.99	5.03	5.03	River Erosion	Existing Site	U
NA0017U16RM17.81	17.81	5.52	5.57	River Erosion	Existing Site	M
NA0017U16RM17.27	17.27	5.55	5.57	River Erosion	Existing Site	U
NA0017U16RM17.11	17.11	5.71	5.72	River Erosion	New Site	M
NA0017U16RM16.27	16.27	6.72	6.91	River Erosion	Existing Site	U
NA0017U16RM15.57	15.57	7.35	7.41	River Erosion	Existing Site	U
NA0017U16RM14.48	14.48	8.61	8.65	River Erosion	Existing Site	M
NA0017U16RM13.86	13.86	8.99	8.99	River Erosion	Existing Site	M
NA0017U16RM13.85	13.85	9.07	9.07	River Erosion	Existing Site	U
NA0017U16RM13.72	13.72	9.39	9.41	River Erosion	Existing Site	M
NA0017U16RM13.53	13.53	9.58	9.60	River Erosion	Existing Site	M
NA0017U16RM12.95	12.95	10.16	10.18	River Erosion	Existing Site	M

USACE Inspection Ratings Summary

System Name	Length (Miles)	RIP Status	RIP Date	Rating
Bear Creek - Unit 8, west of I-5	0.85	Inactive	04/23/2012	U
Bear Creek - Units 12 north	0.44	Active	04/23/2012	M
Bear Creek - Units 12 south, 10, and 13	3.67	Active	05/08/2012	M
Bear Creek - Units 7 east	6.54	Active	10/17/2012	M
Bear Creek - Units 7 west and 21	4.19	Active	07/31/2013	U
Bear Creek - Units 7, 22, and 23	9.29	Active	10/17/2012	M
Bear Creek - Units 8, 10, and 11	7.25	Active	10/17/2012	M
Bear Creek - Units 8, 24, 26, and 9	5.57	Active	10/17/2012	M
Bear Creek - Units 8, 25, and 27	11.14	Inactive	08/21/2012	U
Littlejohn Creek left bank - Unit 1	2.55	Inactive	01/18/2008	U
Littlejohn Creek right bank - Unit 2	2.14	Inactive	01/18/2008	U
Mormon Slough - Calaveras R right bank - RD 2074	11.68	Inactive	04/17/2012	U
Mormon Slough - Calaveras, Divert Canal left bank	12.75	Inactive	04/17/2012	U
Mormon Slough - Diverting Canal right bank	9.58	Active	10/17/2012	M
Mormon Slough left bank along RR tracks - Unit 16	0.46	Active	10/17/2012	M
Mormon Slough right bank - Unit 15 east	3.64	Active	10/17/2012	M

San Joaquin
County

DWR Flood System Repair Project Summary

Unit No. 15 Mormon Slough

POI Number	Category	Failure Mode	Start Levee Mile	End Levee Mile	Bank	Start Latitude	Start Longitude
DWR_NA0017_15_s_2012_10	Critical	Erosion	0.70	1.06	Right	38.04660	-121.02158

DWR Summary of Local Maintaining Agency Report

Part 1 Information known to the Local Agency that is relevant to the condition or performance of the Project Levee (or jurisdictional Non-Project Levee)

The Agency reported reinstallation of rain gauges and stream level monitors at various locations in San Joaquin County.

Part 2 Information identifying known conditions that might impair or compromise the level of flood protection provided by the Project Levee (or jurisdictional Non-Project Levee)

The Agency reported an unpermitted pipe and excavated channel at Levee Unit 1, LM 2.23. The Agency mentioned the pipe is causing erosion at the outfall. The Agency noted the pipe will be removed and the excavated channel will be filled in with compacted material by end of the summer.

Part 3 A summary of maintenance performed by the Local Agency during the previous fiscal year

The Agency provided a summary of maintenance activities performed for all levee units. Activities include trash removal, vegetation control, tree trimming and thinning, sediment removal, erosion repair, flap gate repair, equipment maintenance, levee patrolling and inspection, rodent control and roadway maintenance. The Agency also provided action taken on inspection items listed by DWR in the inspection report. The actions taken include corrected, pending enforcement by CVFPB, and ongoing activities for animal control, encroachment, erosion, slope stability, and vegetation control.

Part 4 A statement of work and estimated cost for operation and maintenance of the Project Levee (or jurisdictional Non-Project Levee) for the current fiscal year, as approved by the Local Agency

The Agency provided a summary of expenses and maintenance activities planned for all levee units. Expenses include costs of erosion repair, minor structure maintenance, equipment maintenance, patrolling, roadway maintenance, sediment removal, trash removal, vegetation control, and tree thinning and trimming. The reported total estimated cost for the current fiscal year is \$3,685,100.

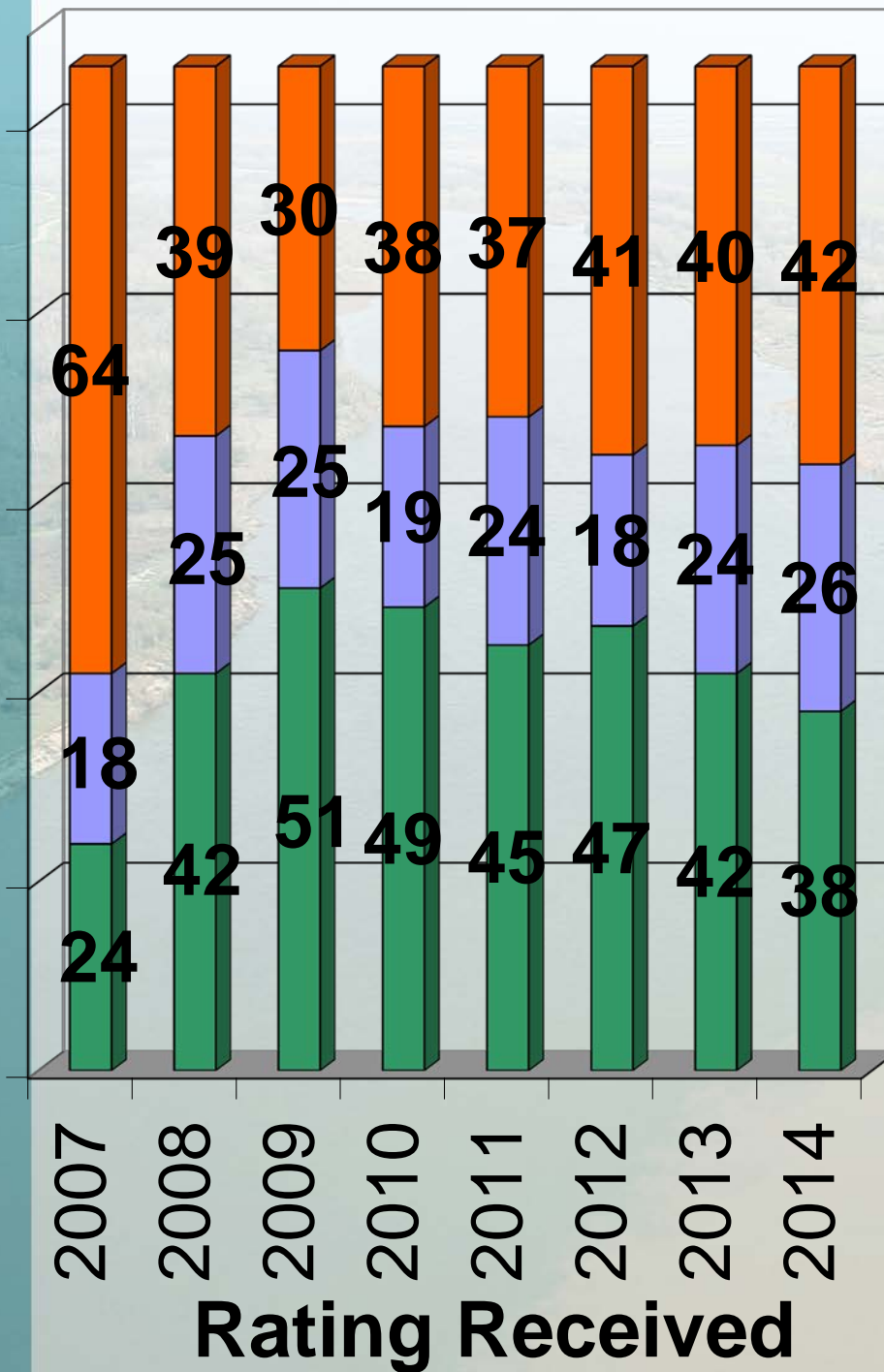
Part 5 Any other readily available information contained in the records of the Local Agency relevant to the condition or performance of the Project Levee (or jurisdictional Non-Project Levee), as determined by the CVFPB or DWR

The Agency reported that there is no new additional information that is relevant to the condition or performance of the Project levee.

2014 Inspection Results

	Levees	Channels	Structures	Pumping Plants
Acceptable	38	16	44	13
Minimally Acceptable	26	9	8	0
Unacceptable	42	0	0	0

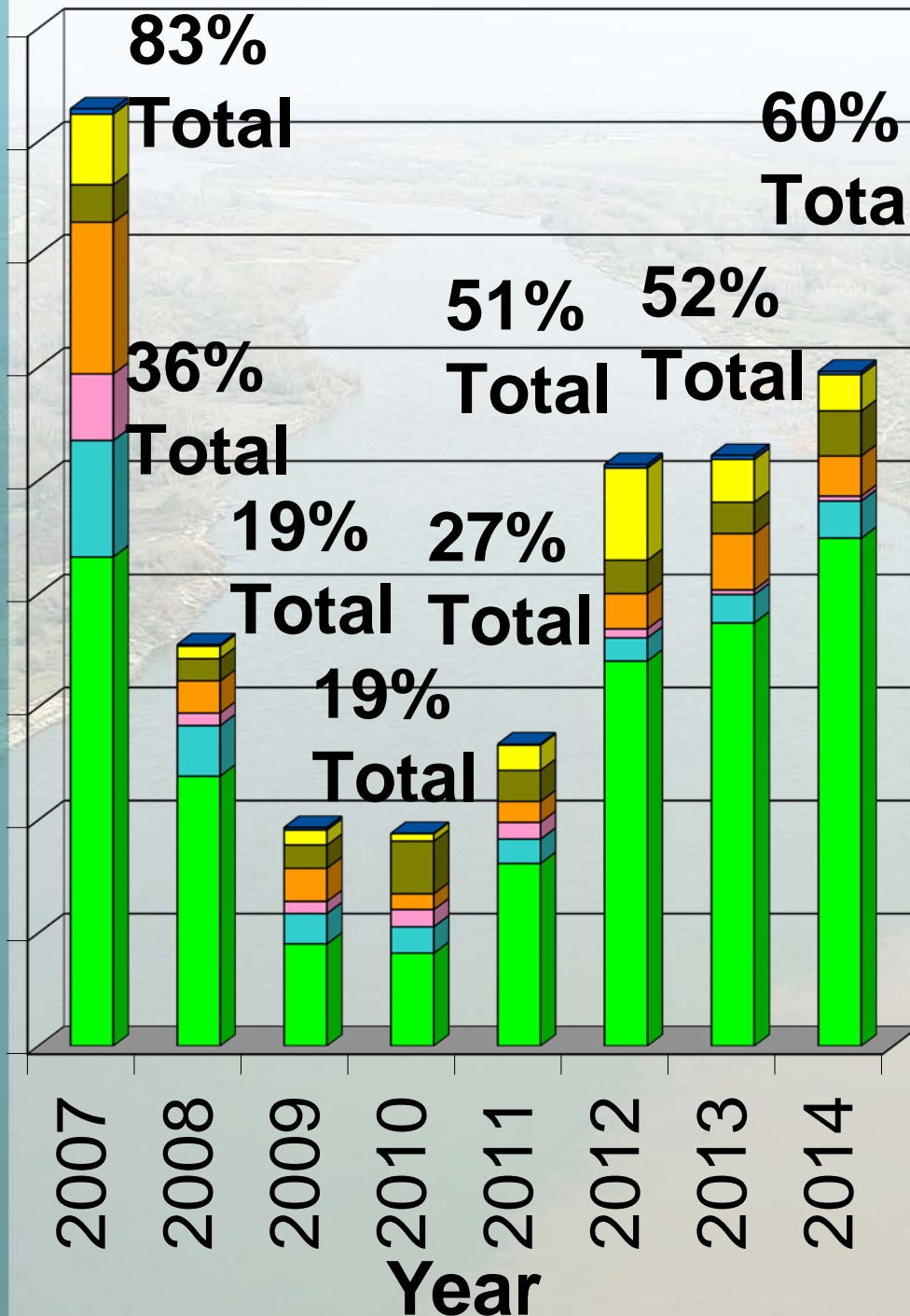
Number of Areas



- Unacceptable
- Minimally Acceptable
- Acceptable

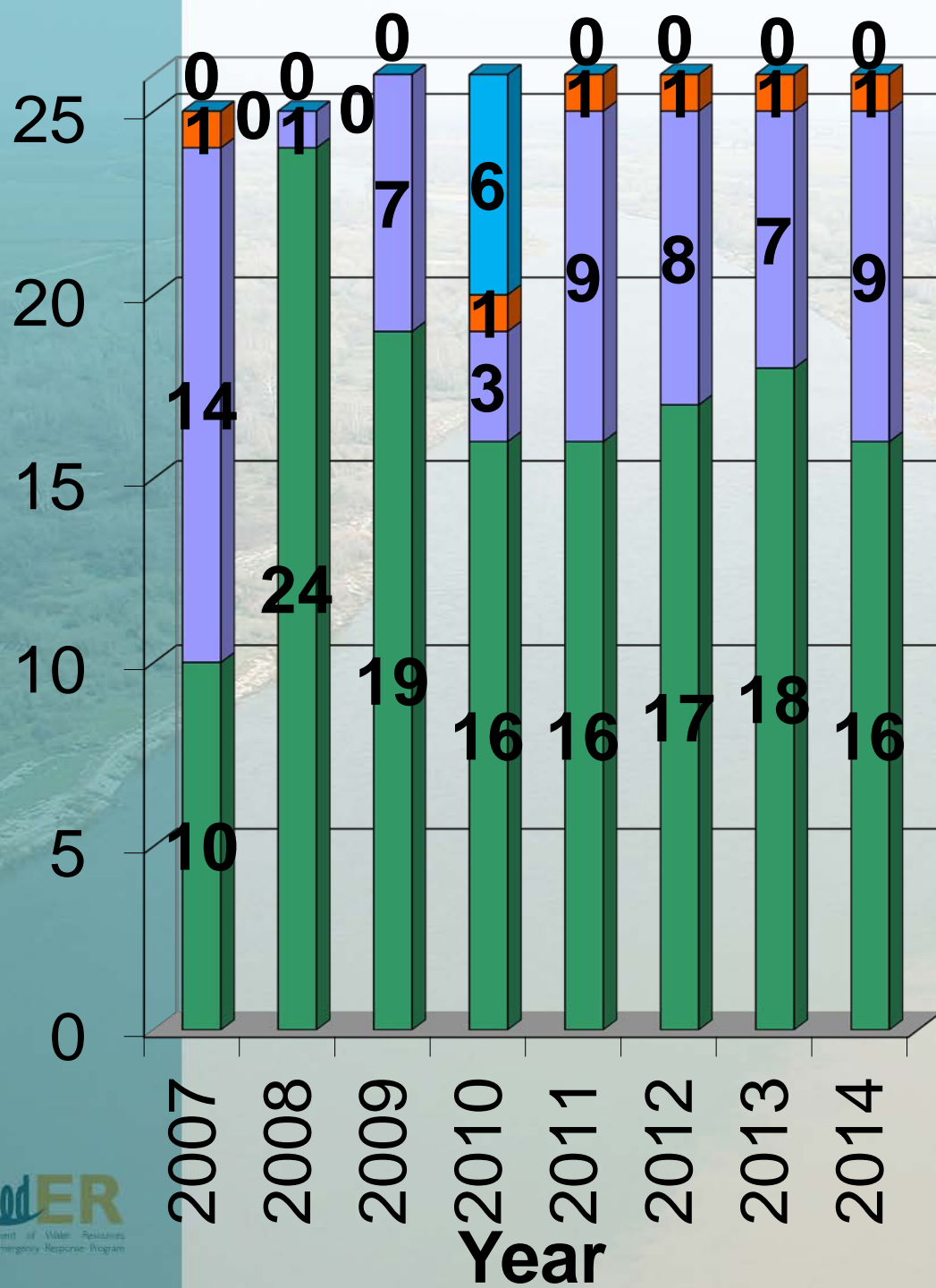
Percent of Mileage Deficient

90%
80%
70%
60%
50%
40%
30%
20%
10%
0%



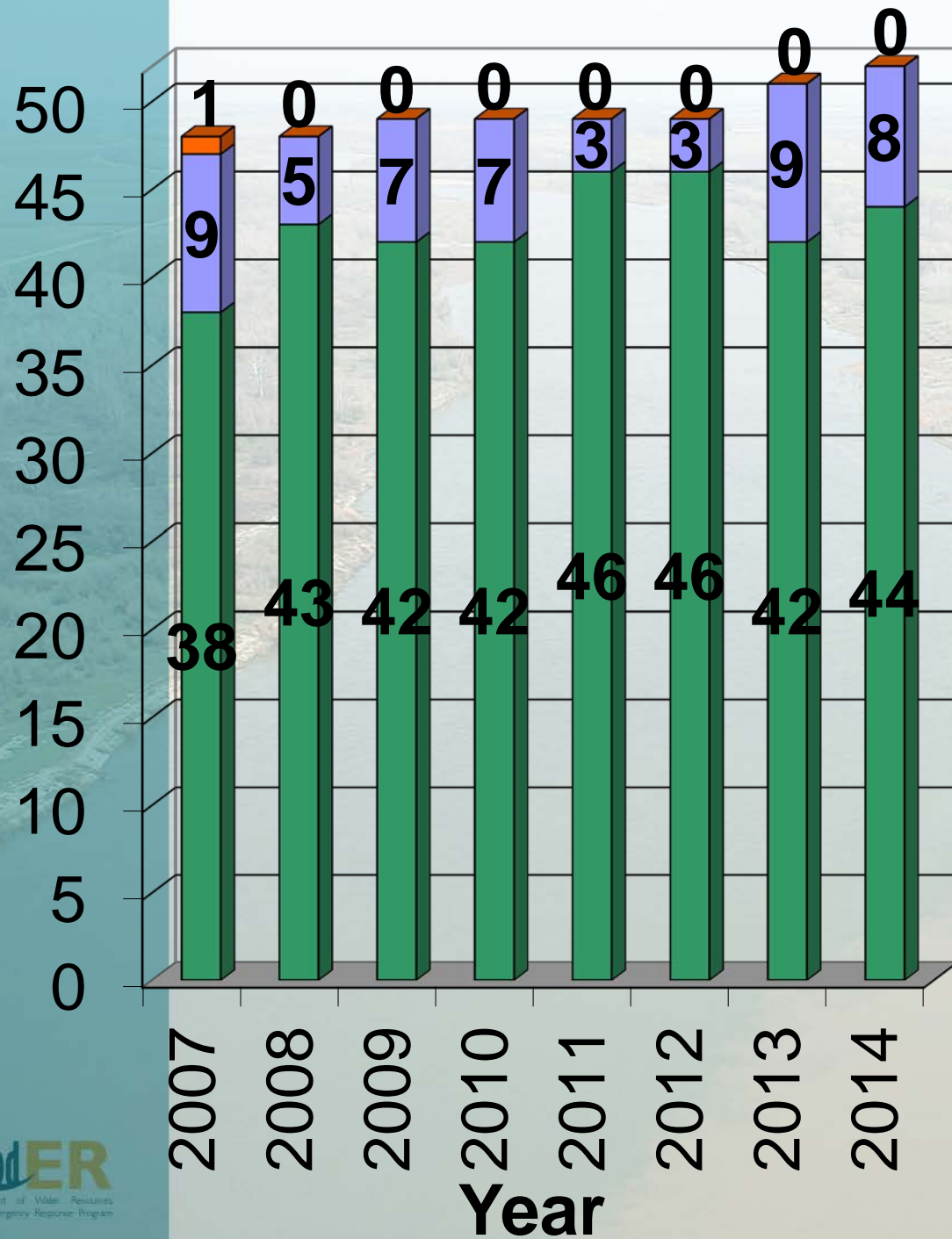
- Other
- Crown Surface
- Erosion
- Animal Control
- Encroachments
- Trim/Thin Trees
- Vegetation

Number of Channels



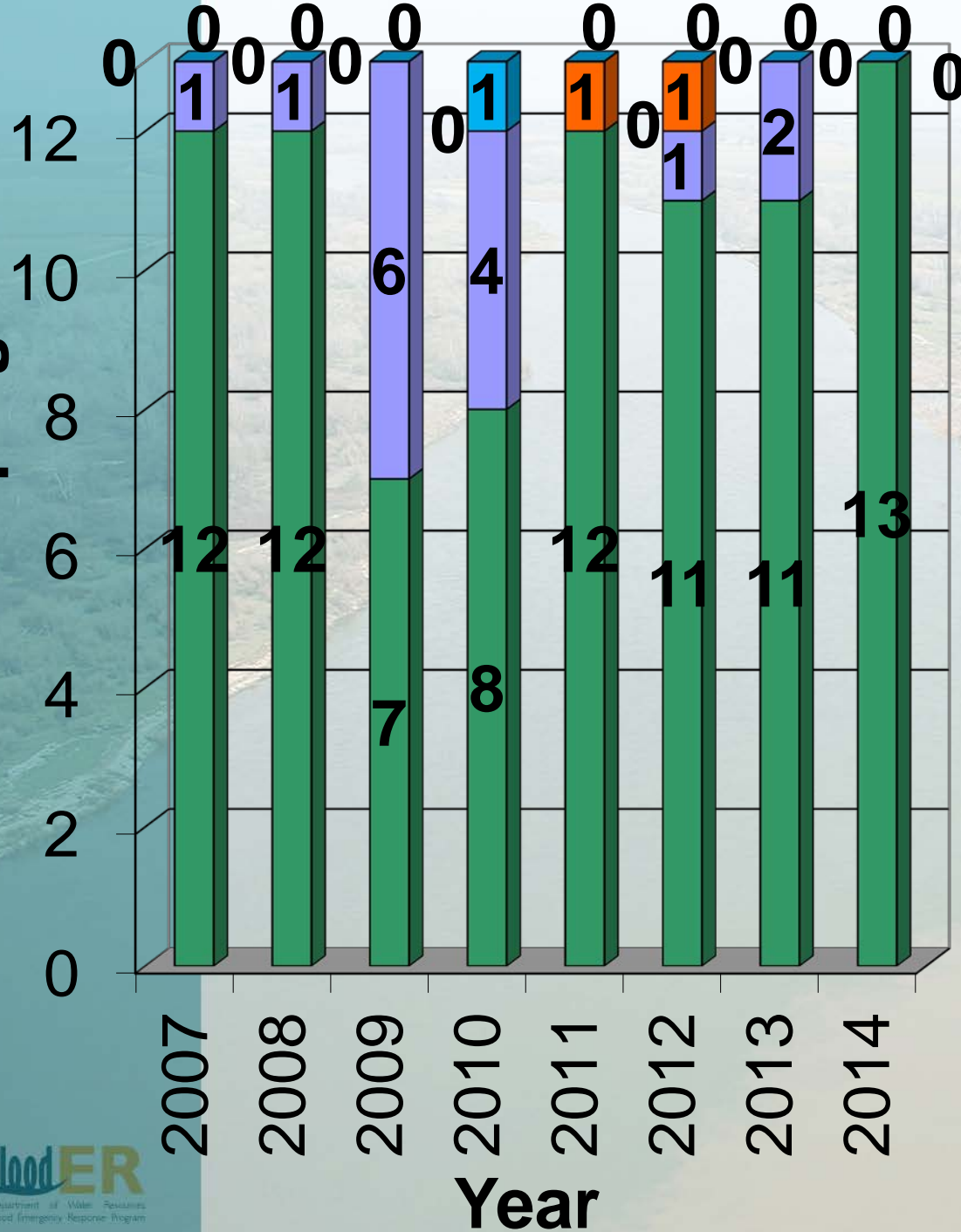
- Acceptable
- Minimally Acceptable
- Unacceptable
- Not Inspected

Number of Structures



- Acceptable
- Minimally Acceptable
- Unacceptable

Number of Pumping Plants



- Acceptable
- Minimally Acceptable
- Unacceptable
- Not Inspected

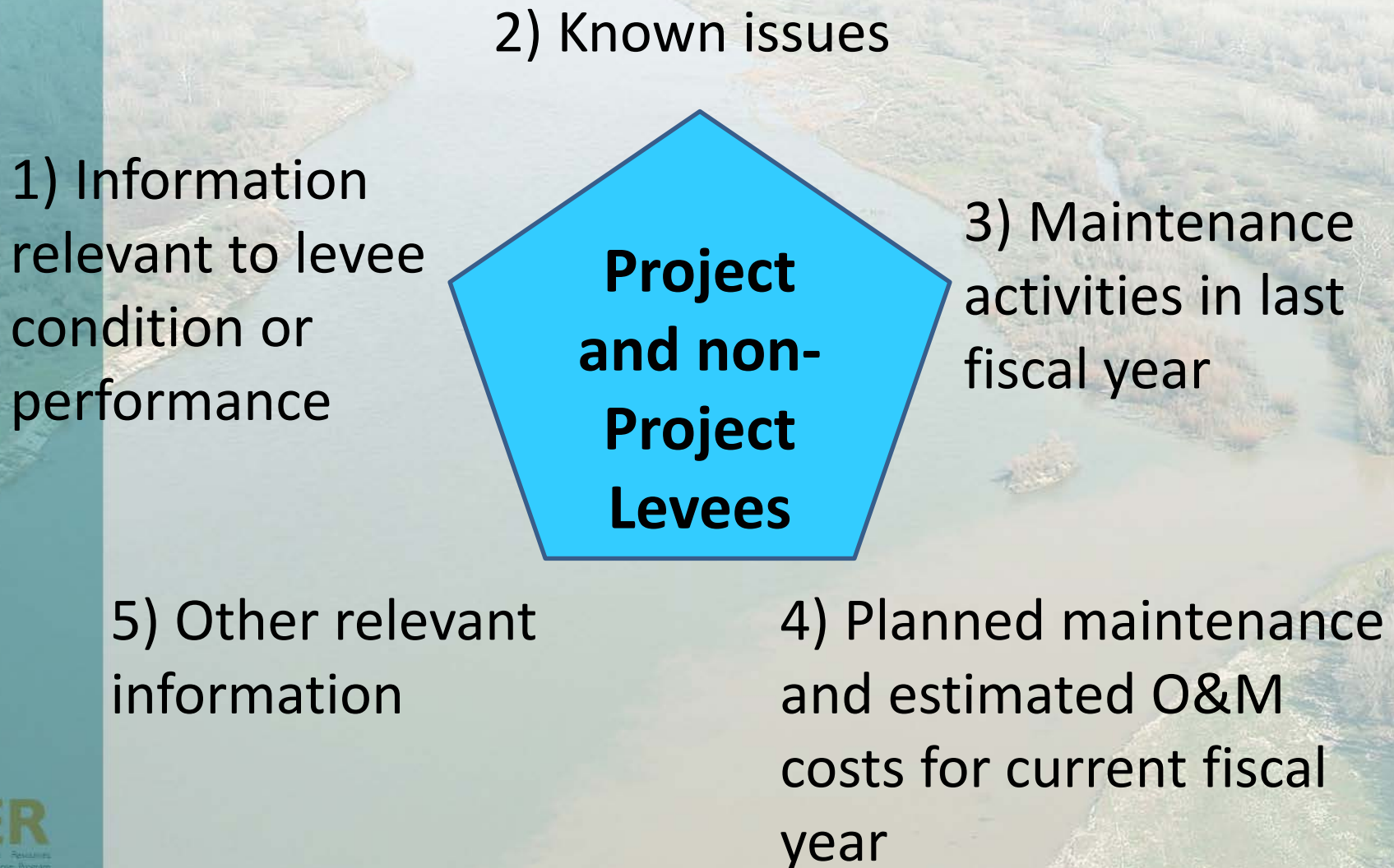
LMA Reporting Program

- Background
- 2014 Program Activities
- 2014 Results
- Into the Future

Reporting Program History



What Information is Required?



Electronic Reporting Web Application

<http://cdec.water.ca.gov/lma.html>

Flood Project Integrity and Inspection Branch - Windows Internet Explorer

http://cdec.water.ca.gov/lma.html

CA.GOV DEPARTMENT OF WATER RESOURCES
California Data Exchange Center

Home Query Tools Prec FPIIB Login

Most Popular Links

- Executive Summary
- Real-time Data
- Daily Data
- Monthly Data
- Historical Data
- Data Plotter
- Station Search
- Station Locator
- Daily Water Temperatures
- Reports
- Other Related Data Sources
- Contact CDEC Staff

Related Links

- California Cooperative Snow Surveys
- State Climatologist
- State Meteorologist
- Division of Flood Management
- Department of Water Resources

Welcome to Flood Project Integrity and Inspection Branch (Local Maintaining Agency)

Please enter your username

Username:

Password:

Tuesday, January 3, 2012 12:51:05 PM

Copyright © 2008-2010 State of California

Local Maintaining Agency Annual Report - (AB156)

File Edit LMA Annual Report UCIP Delta Administration Window Help

New Report

(For both Project and Non-Project Levees)

☐ Hardcopy Report ☒ Project Levees (Default) ☐ Non-Project Levees ☐ Other Levees

American River Flood Control District Maintained Area: American River Flood Control District

Unit No. 01 Arcade Creek - LB Levee Unit: Unit No. 01 Arcade Creek - LB (UP1) District Code: HA0001

American River Flood Control District

2012 Report Part 1:
Information known to the local agency that is relevant to the condition or performance of the project levee.
1) Select the Condition or Performance Feature of the Project Levee.

Select a Category/Item

Feature/Condition Description

No feature/condition description.

Date / Time

Select of Time 01/03/2012 12:55

Location Description

No location description.

GPS Coordinates/Levee Mile

Latitude: + N Start End

Longitude: + W

Levee Mile: Start End

Additional Comments

No comments.

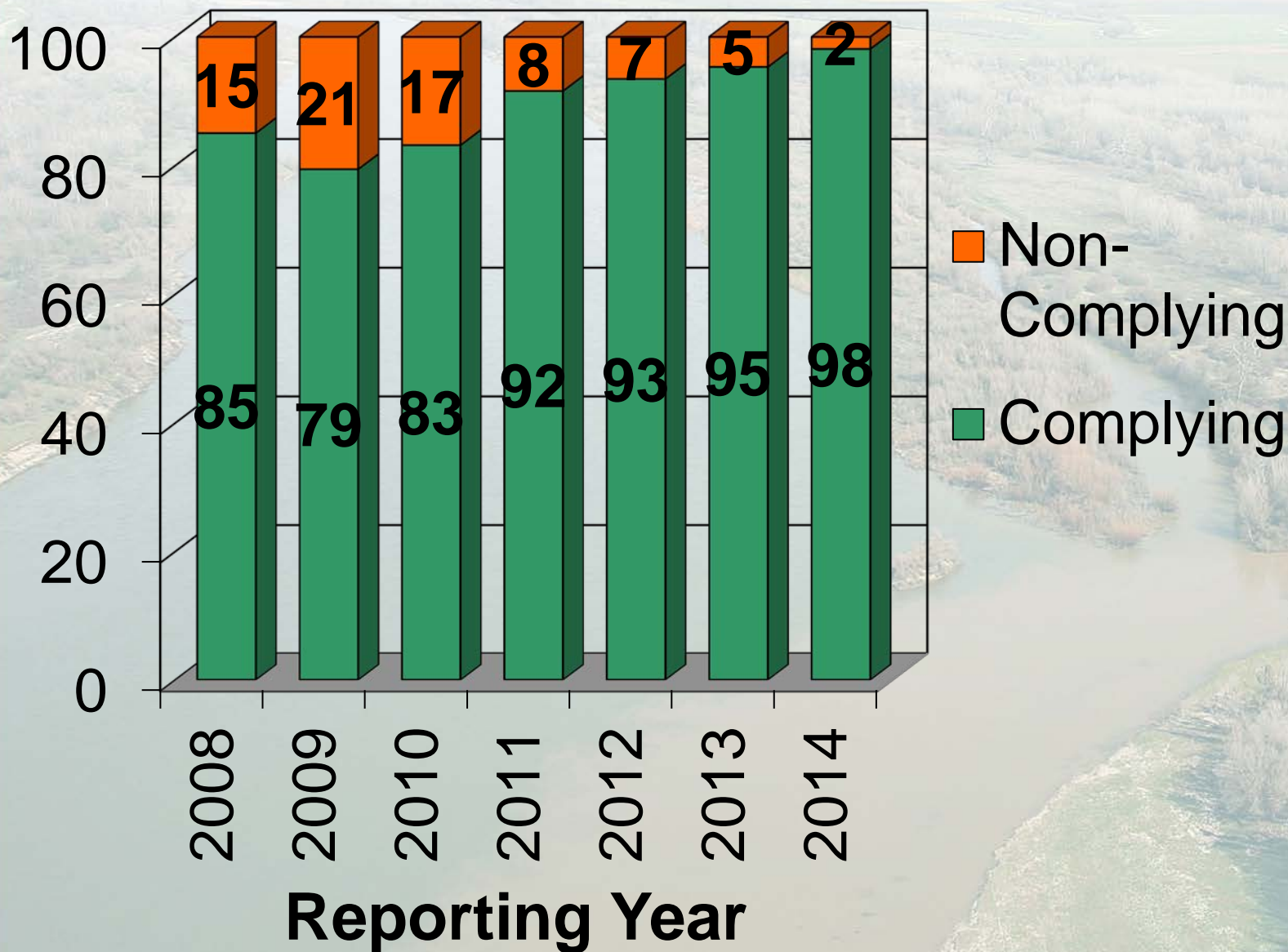
Action

☐ View Submitted Report ☒ Clear Form

Submit Report

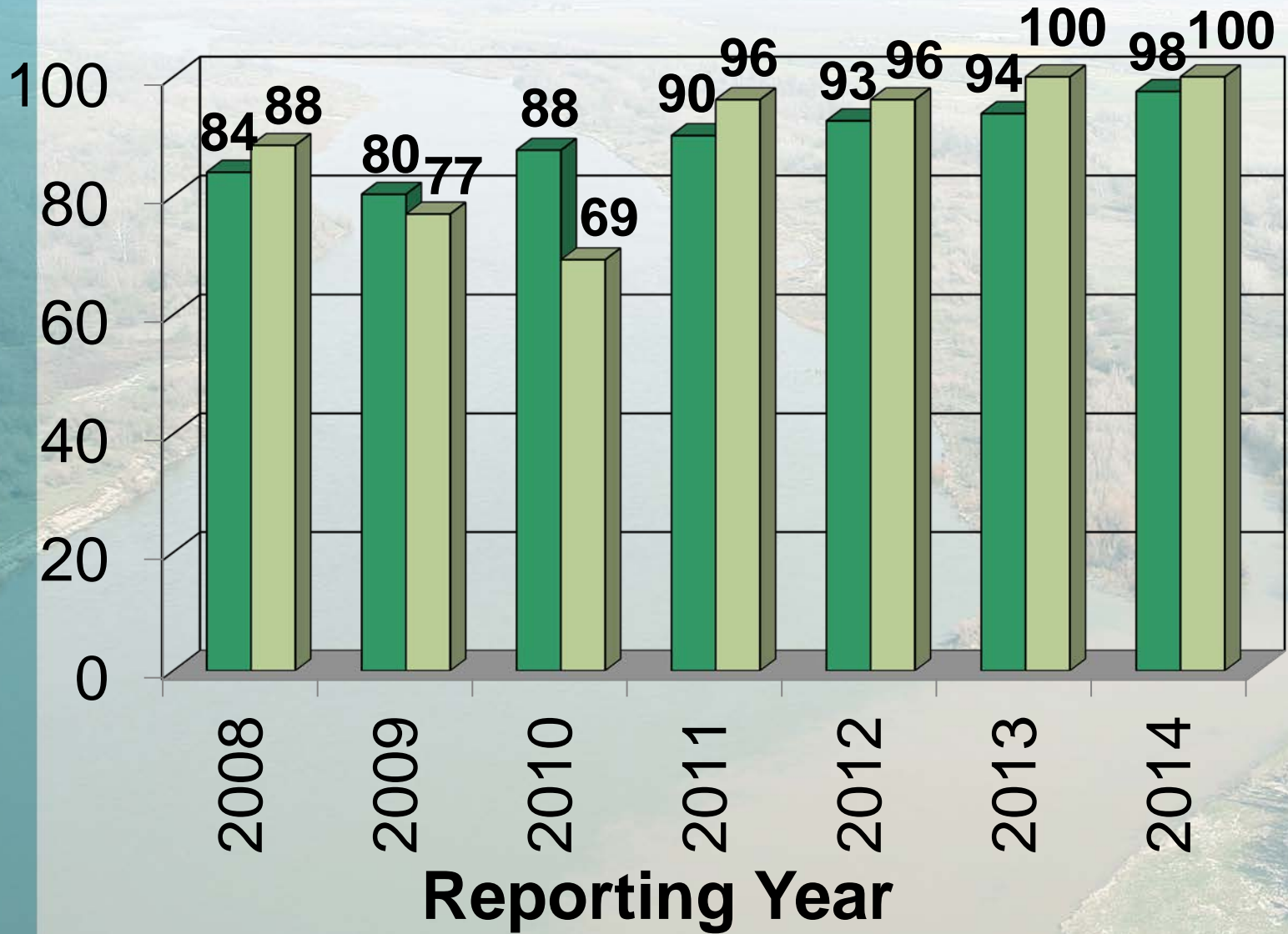
LMA Reporting Compliance

Percentage of LMA Areas



Reporting Compliance by System

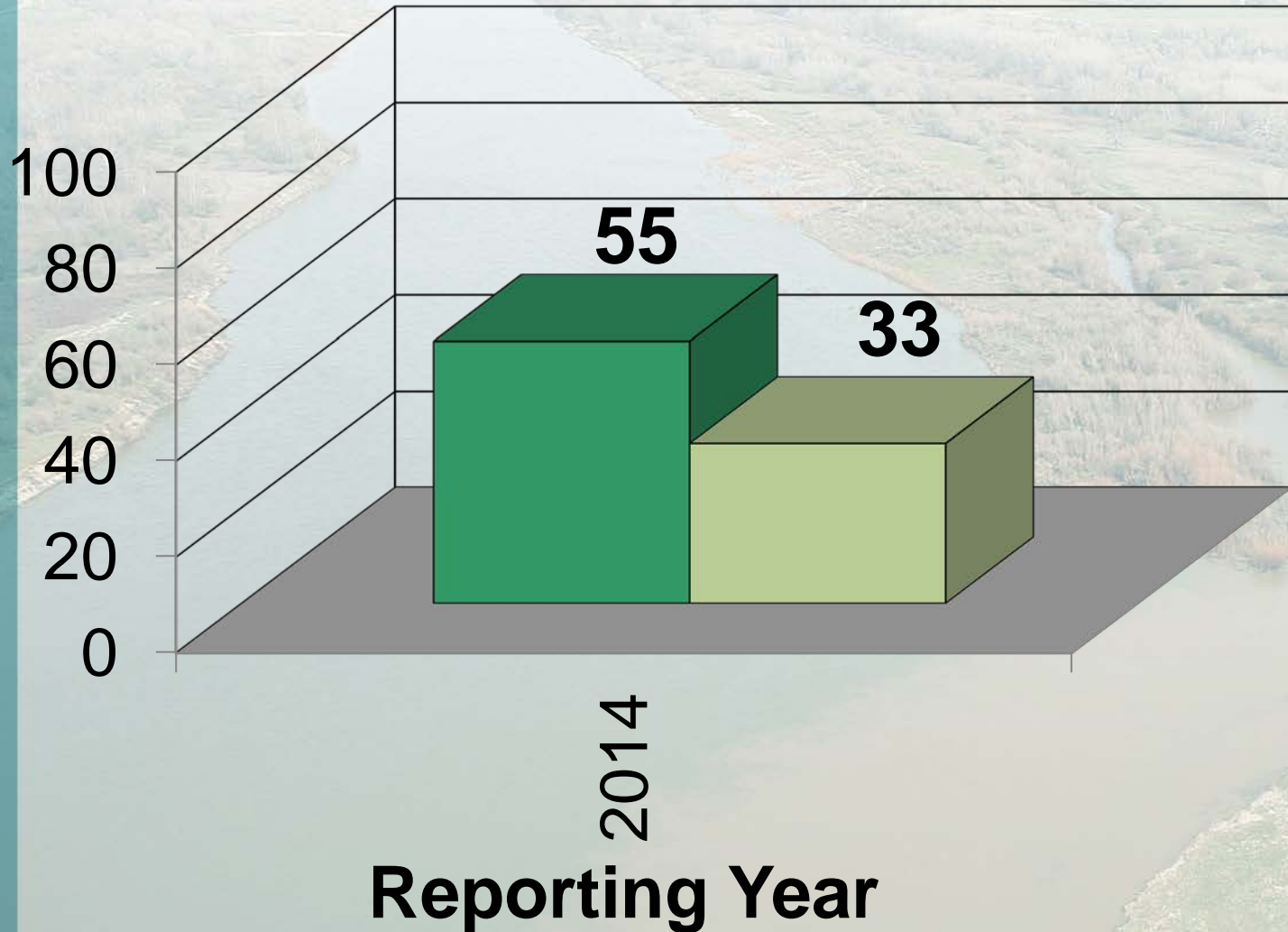
Percentage of LMA Areas



■ Sacramento System ■ San Joaquin System

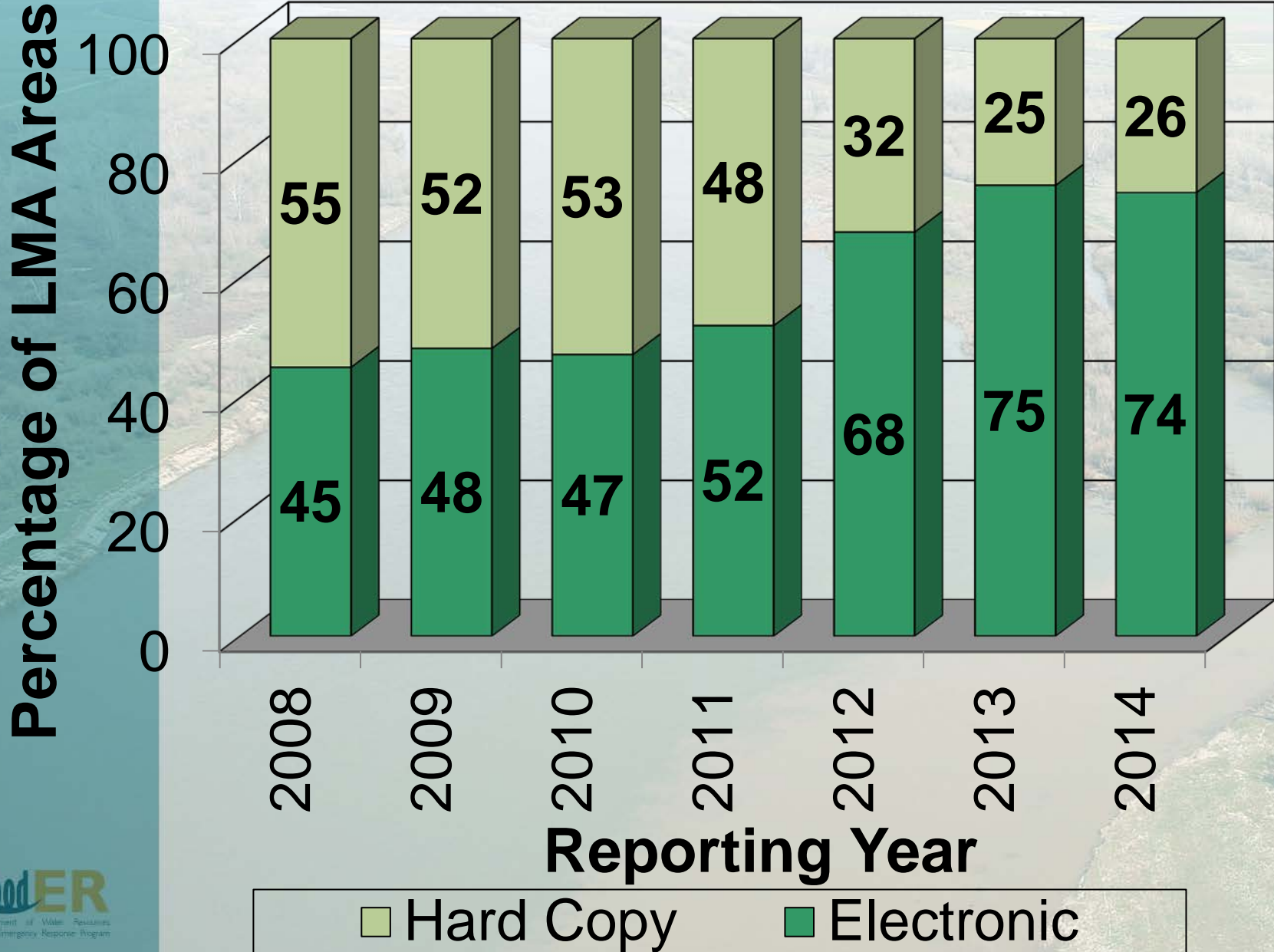
Non-Project Reporting Compliance by System

Percentage of LMA Areas

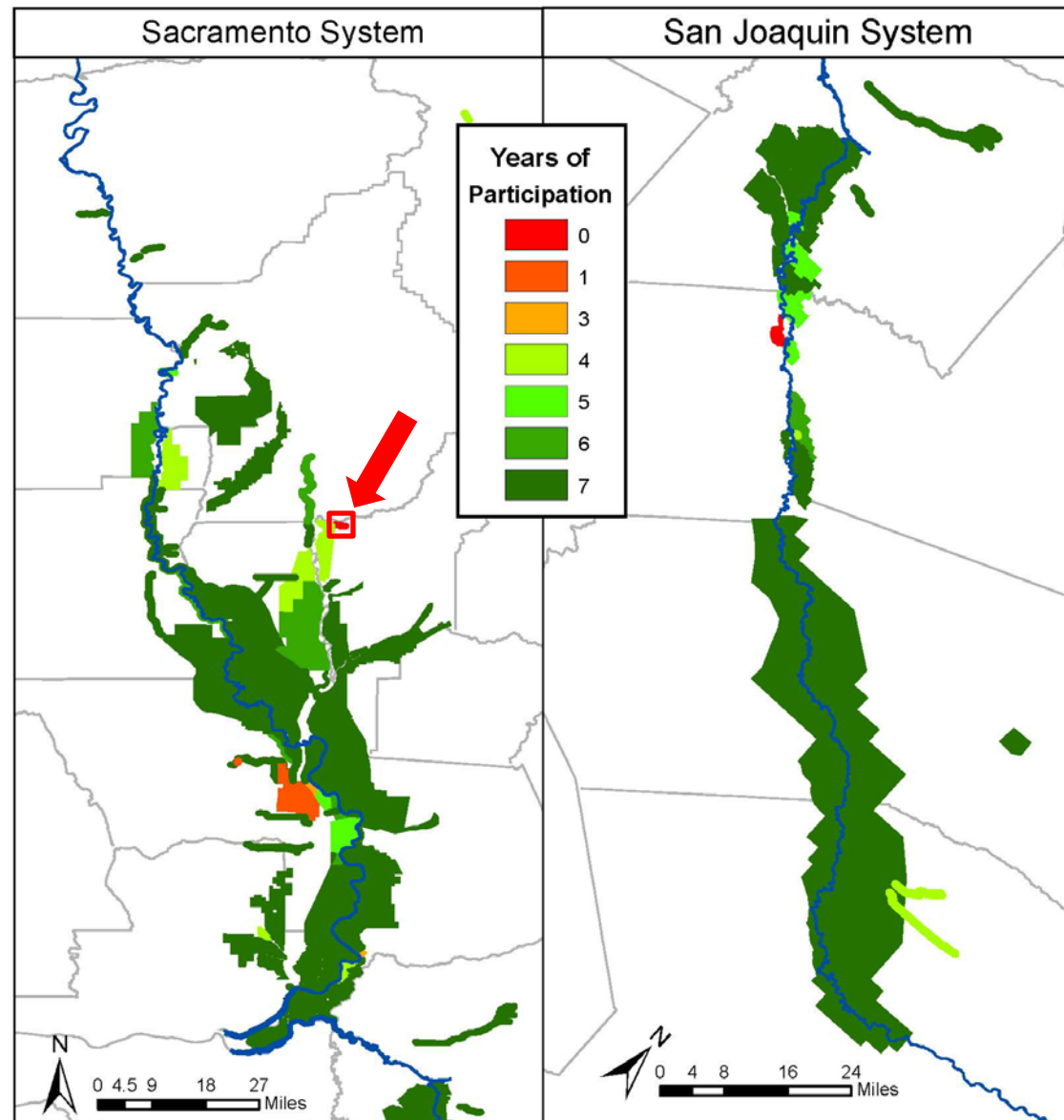


■ Sacramento System ■ San Joaquin System

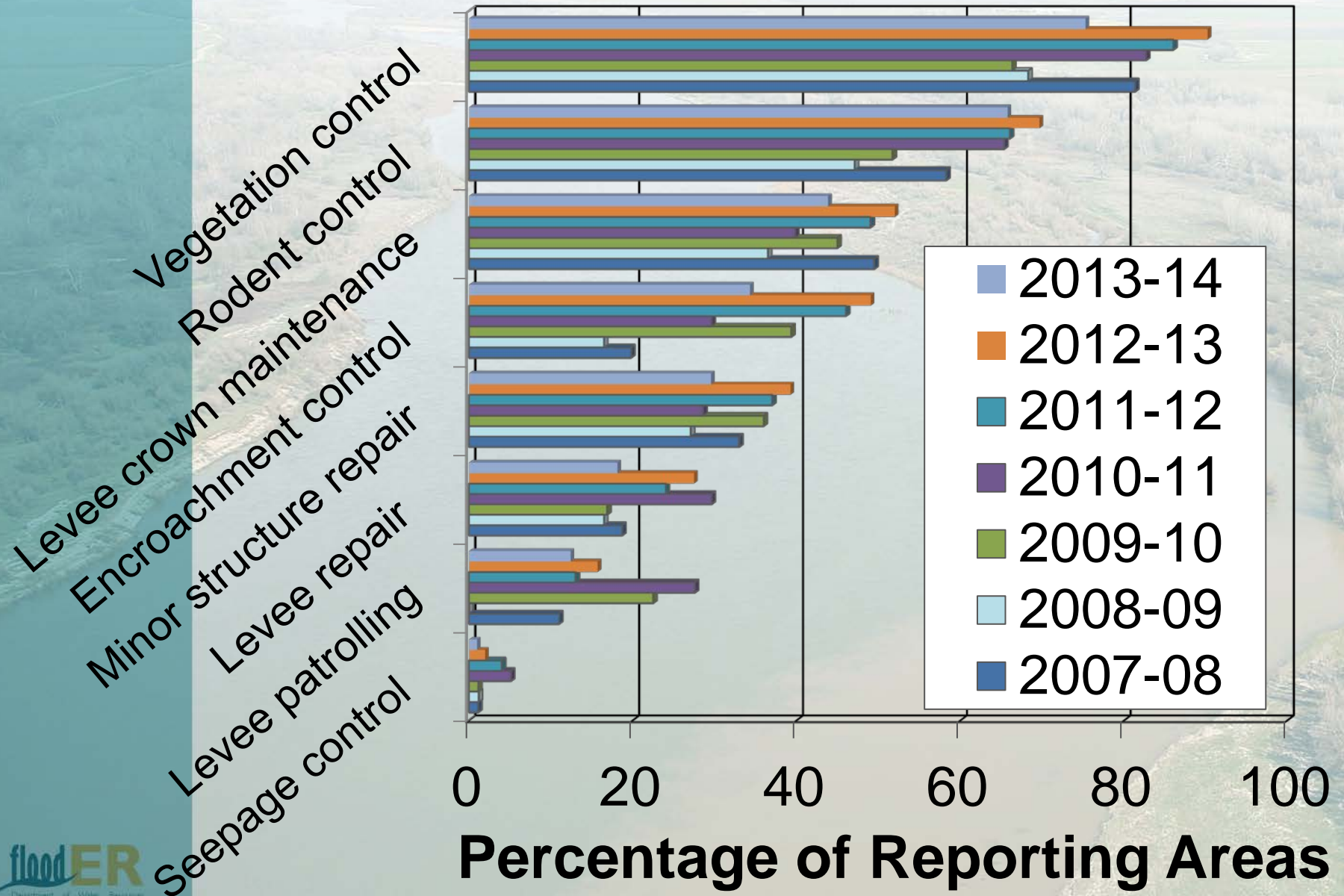
Reporting Mode



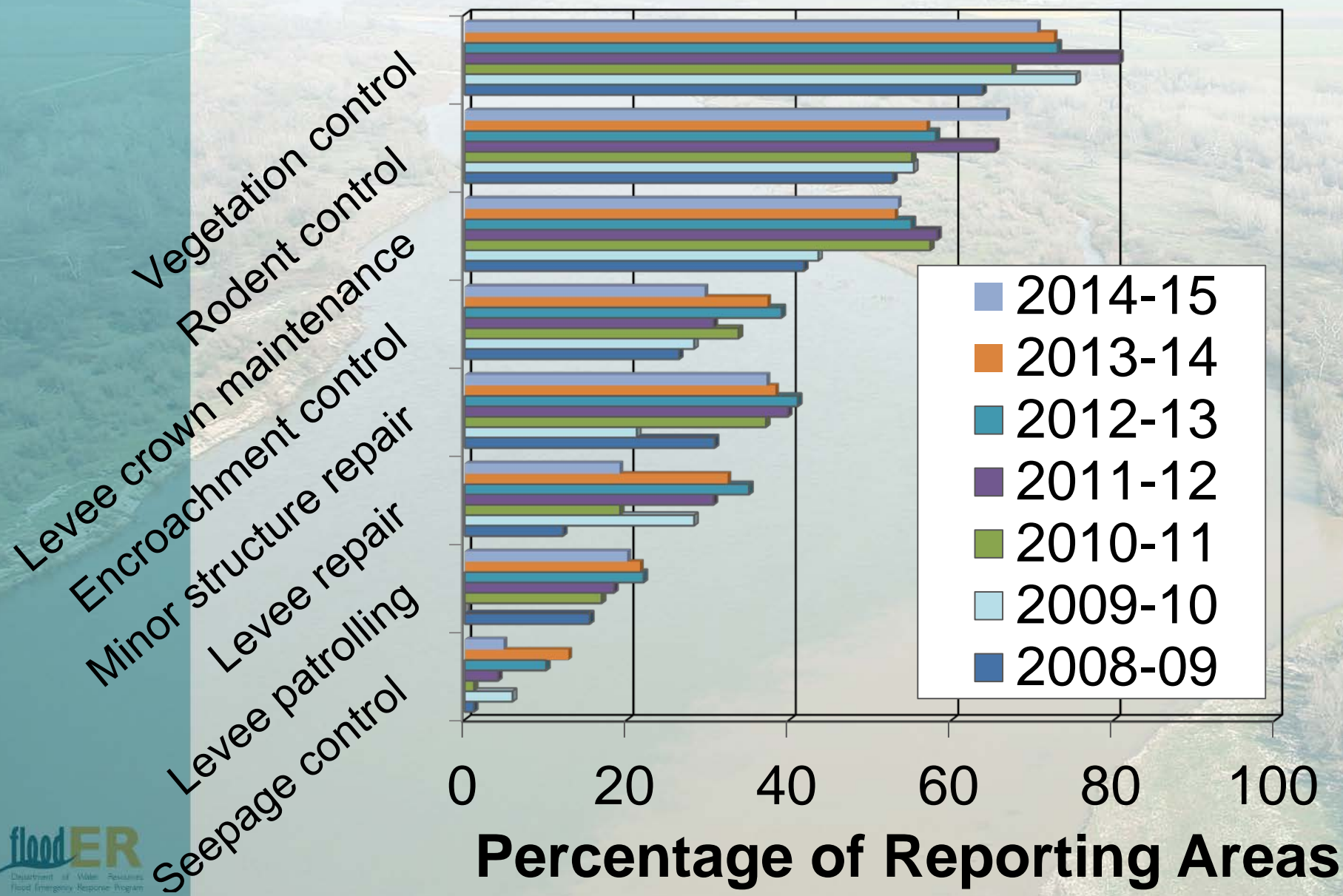
Reporting History



Key Activities - Performed



Key Activities - Planned



2014 FPIIB Achievements

- Improved Reporting Compliance (98%)
- Non-Project Levee Database
- Assisted FOC
- Maintenance Only LMRs
- Levee Mile Calculation Tool
- Digitization of Permits

2014 FPIIB Achievements

- Levee Log Updates
- Completed UCIP Field Studies
- Library of Models
- Coordination
- Designated Floodway Inspections
- O&M Manuals / As-Builts / Assurance Agreements

Into the Future

- Continued Outreach
- Improve Quality of Reporting
- Continued Research into Authorization on SPFC Features
- Continue with Designated Floodway Inspections

2014

INSPECTION AND LOCAL MAINTAINING AGENCY REPORT OF THE CENTRAL VALLEY STATE-FEDERAL FLOOD PROTECTION SYSTEM

Code of Federal Regulations, Title 33, Section 208.10

California Water Code Sections 9140 - 9141

Questions?

Department of Water Resources

Flood Project Integrity and Inspection Branch | Hydrology and Flood Operations Office | Division of Flood Management

Non-Project Levees

Factsheet



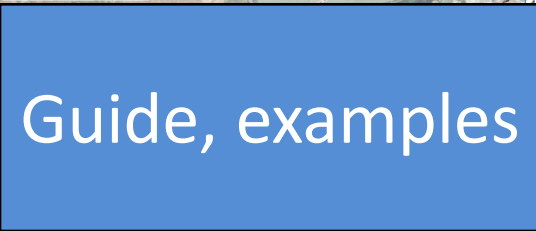
Form

Non-Project Levee Information Form

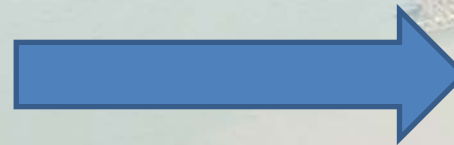
Local Maintaining Agency: Please specify the name: _____

Does the Agency maintain any Non-Project Levees? Please check the right circle: ☐ No ☐ Yes If "Yes," the remainder of the form must be completed.

Information	Non-Project Levee #1	Non-Project Levee #2	Non-Project Levee #3	Non-Project Levee #4	Non-Project Levee #5
Non-Project Levee Name (Please specify the name if any)					
Non-Project Levee ID# (Please specify the ID# number if any)					
Water body (Please specify the first location against which the non-project levee provides protection)					
Is the Protection left or right of the flood channel?					
Is the Protection by the Non-project Levee (Please specify the type of protection)					
Height of wall or dike					
Location of wall (Please specify where the levee wall starts and ends)					
Start Date (Year)					
End Date (Year)					



Database,
Reporting Tool



Compliance