

# USACE Inspection Results

**Ryan Larson, PE**

Flood Protection and Navigation Section

Sacramento District

January 23, 2015



**U.S. ARMY**

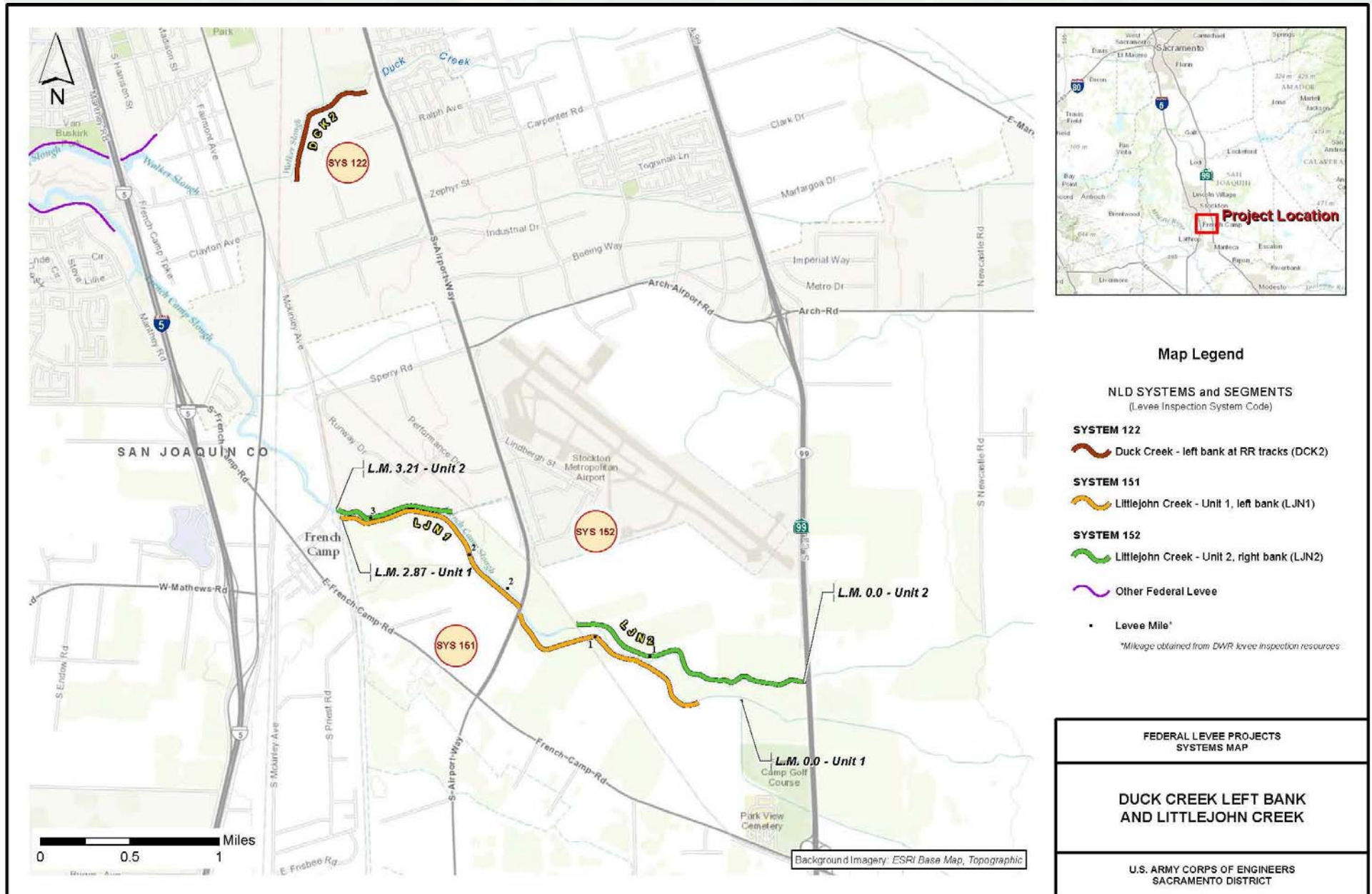


®

US Army Corps of Engineers  
**BUILDING STRONG**®



# Littlejohn Creek





# Littlejohn Creek Left Bank – Unit 1

	System: Littlejohn Creek left bank - Unit 1 Levee System System Rating: Minimally Acceptable Approved SWIF/LOI: No PL 84-99 RP Eligibility: Active	Littlejohn Creek - Unit 1, left bank (LJN1)							
General	Operations and Maintenance Manuals	M							
	Emergency Supplies and Equipment	A							
	Flood Preparedness and Training	A							
Levee - Items Affecting PL 84-99 RP Eligibility	Encroachments	M							
	Closure Structures	NA							
	Slope Stability	M							
	Erosion/Bank Caving	M							
	Animal Control	A							
	Culverts/Discharge Pipes	NA							
	Underseepage Relief Wells/Toe Drainage Systems	NA							
Levee Embankments - Other Items	Vegetation Growth	M							
	Sod Cover	NA							
	Settlement	M							
	Depressions/Rutting	M							
	Cracking	A							
	Riprap Revetments & Bank Protection	NA							
	Revetments other than Riprap	NA							
	Seepage	A							
	<b>Legend</b>								
	A Acceptable	M	Includes Unacceptable observations not likely to prevent performance in next flood event						
	M Minimally Acceptable	U	Serious deficiency noted in past inspection report has not been corrected within the established timeframe						
	U Unacceptable	U	Likely prevents performance in next flood event						
	N/A Not Applicable								

# Littlejohn Creek Right Bank – Unit 2

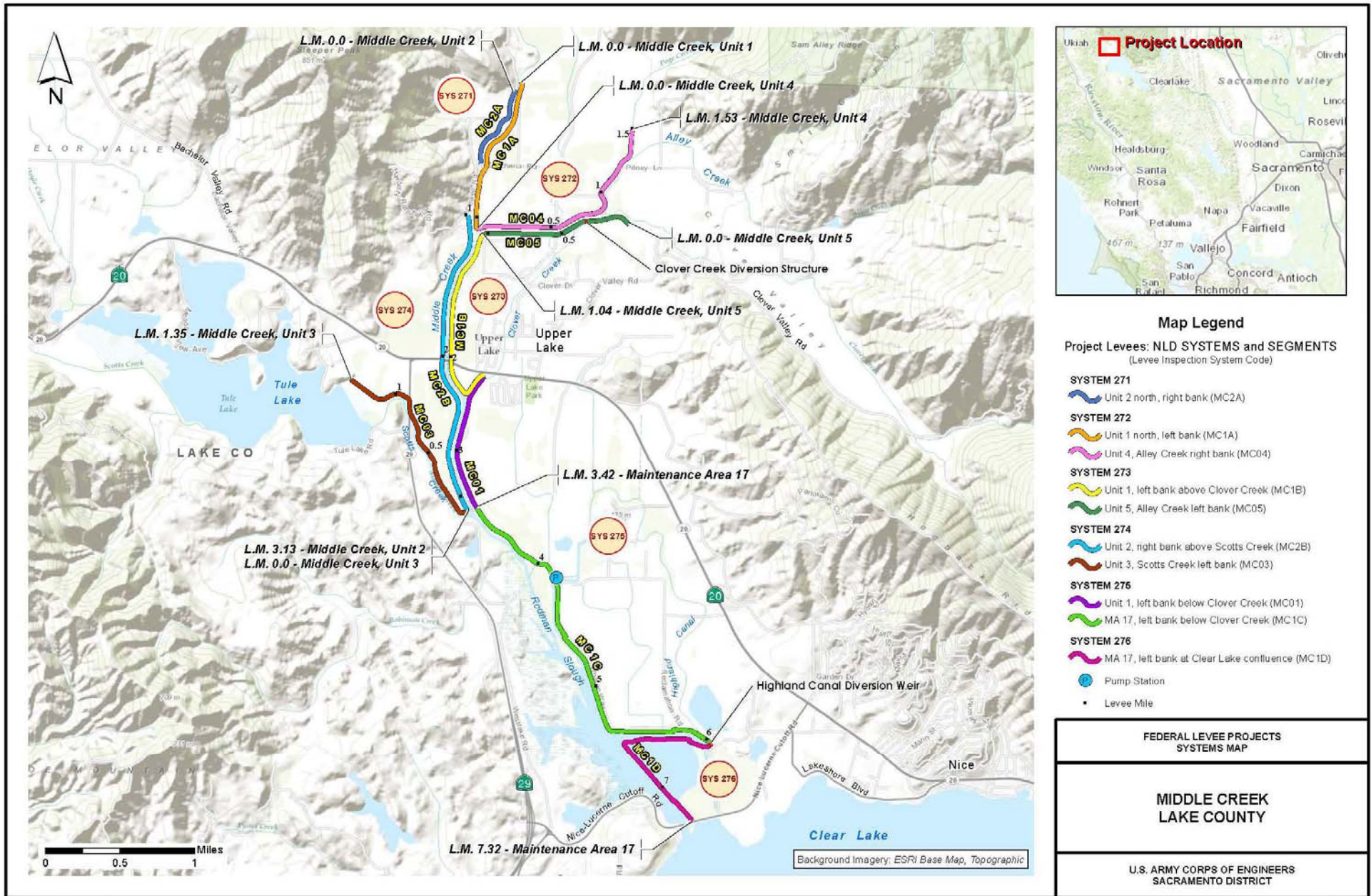
	System: Littlejohn Creek right bank - Unit 2 Levee System System Rating: Minimally Acceptable Approved SWIF/LOI: No PL 84-99 RP Eligibility: Active	Littlejohn Creek - Unit 2, right bank (LJN2)							
General	Operations and Maintenance Manuals	M							
	Emergency Supplies and Equipment	A							
	Flood Preparedness and Training	A							
Levee - Items Affecting PL 84-99 RP Eligibility	Encroachments	M							
	Closure Structures	NA							
	Slope Stability	A							
	Erosion/Bank Caving	A							
	Animal Control	A							
	Culverts/Discharge Pipes	NA							
	Underseepage Relief Wells/Toe Drainage Systems	NA							
Levee Embankments - Other Items	Vegetation Growth	M							
	Sod Cover	NA							
	Settlement	M							
	Depressions/Rutting	M							
	Cracking	A							
	Riprap Revetments & Bank Protection	NA							
	Revetments other than Riprap	NA							
	Seepage	M							
	<b>Legend</b> A    Acceptable M    Minimally Acceptable U    Unacceptable N/A   Not Applicable	<div>M</div> <div>U</div> <div>U</div>	Includes Unacceptable observations not likely to prevent performance in next flood event Serious deficiency noted in past inspection report has not been corrected within the established timeframe Likely prevents performance in next flood event						



**BUILDING STRONG®**



# Middle Creek



# Middle Creek Right Bank – Unit 2 North

	System: Middle Creek right bank - Unit 2 north Levee System System Rating: Unacceptable Approved SWIF / LOI: No PL 84-99 RP Eligibility: Inactive	Middle Creek - Lake County - Unit 2 north, right bank (MC2A)							
General	Operations and Maintenance Manuals	M							
	Emergency Supplies and Equipment	A							
	Flood Preparedness and Training	M							
Levee - Items Affecting PL 84-99 RP Eligibility	Encroachments	U							
	Closure Structures	NA							
	Slope Stability	A							
	Erosion/Bank Caving	A							
	Animal Control	M							
	Culverts/Discharge Pipes	NA							
	Underseepage Relief Wells/Toe Drainage Systems	NA							
Levee Embankments - Other Items	Vegetation Growth	M							
	Sod Cover	A							
	Settlement	M							
	Depressions/Rutting	M							
	Cracking	A							
	Riprap Revetments & Bank Protection	NA							
	Revetments other than Riprap	NA							
	Seepage	A							
	<b>Legend</b>		<div> <div>M</div> Includes Unacceptable observations not likely to prevent performance in next flood event </div> <div> <div>U</div> Serious deficiency noted in past inspection report has not been corrected within the established timeframe </div> <div> <div>U</div> Likely prevents performance in next flood event </div>						
	A Acceptable								
	M Minimally Acceptable								
	U Unacceptable								
	N/A Not Applicable								



**BUILDING STRONG®**

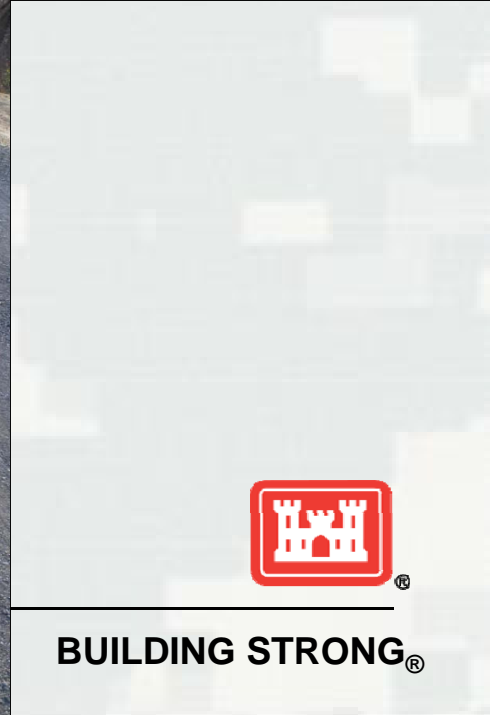






# Middle Creek Left Bank – Unit 1 North

	System: Middle Creek left bank - Unit 1 north Levee System System Rating: Unacceptable Approved SWIF / LOI: No PL 84-99 RP Eligibility: Inactive	<div>Middle Creek - Lake County - Unit 4, Alley Creek right bank (MC04)</div> <div>Middle Creek - Lake County - Unit 1 north, left bank (MC1A)</div>							
General	Operations and Maintenance Manuals	M	M						
	Emergency Supplies and Equipment	A	A						
	Flood Preparedness and Training	M	M						
Levee - Items Affecting PL 84-99 RP Eligibility	Encroachments	U	U						
	Closure Structures	NA	NA						
	Slope Stability	A	A						
	Erosion/Bank Caving	A	M						
	Animal Control	M	M						
	Culverts/Discharge Pipes	NA	NA						
	Underseepage Relief Wells/Toe Drainage Systems	NA	NA						
Levee Embankments - Other Items	Vegetation Growth	M	M						
	Sod Cover	M	M						
	Settlement	M	M						
	Depressions/Rutting	M	M						
	Cracking	A	A						
	Riprap Revetments & Bank Protection	NA	NA						
	Revetments other than Riprap	NA	NA						
	Seepage	A	A						
	<b>Legend</b> A Acceptable M Minimally Acceptable U Unacceptable N/A Not Applicable	<div>M</div> <div>U</div> <div>U</div>	Includes Unacceptable observations not likely to prevent performance in next flood event  Serious deficiency noted in past inspection report has not been corrected within the established timeframe  Likely prevents performance in next flood event						



**BUILDING STRONG®**



# Middle Creek Left Bank – Unit 5 and part of 1

	System: Middle Creek left bank - Unit 5 and part of 1 Levee System System Rating: Unacceptable Approved SWIF / LOI: No PL 84-99 RP Eligibility: Inactive	<div> <div>Middle Creek - Lake County - Unit 5, Alley Creek left bank (MC05)</div> <div>Middle Creek - Lake County - Unit 1, left bank above Clover Creek (MC1B)</div> </div>							
General	Operations and Maintenance Manuals	M	M						
	Emergency Supplies and Equipment	A	A						
	Flood Preparedness and Training	M	M						
Levee - Items Affecting PL 84-99 RP Eligibility	Encroachments	U	U						
	Closure Structures	NA	M						
	Slope Stability	A	A						
	Erosion/Bank Caving	A	A						
	Animal Control	M	M						
	Culverts/Discharge Pipes	M	NA						
	Underseepage Relief Wells/Toe Drainage Systems	NA	NA						
Levee Embankments - Other Items	Vegetation Growth	M	M						
	Sod Cover	M	M						
	Settlement	M	M						
	Depressions/Rutting	M	M						
	Cracking	A	A						
	Riprap Revetments & Bank Protection	NA	NA						
	Revetments other than Riprap	NA	M						
	Seepage	A	A						
	<b>Legend</b> A Acceptable M Minimally Acceptable U Unacceptable N/A Not Applicable <div> <div>M</div> Includes Unacceptable observations not likely to prevent performance in next flood event  <div>U</div> Serious deficiency noted in past inspection report has not been corrected within the established timeframe  <div>U</div> Likely prevents performance in next flood event </div>								



**BUILDING STRONG®**





**BUILDING STRONG®**

## Middle Creek Right Bank – Unit 2

	System: Middle Creek right bank - Unit 2 Levee System System Rating: Unacceptable Approved SWIF / LOI: No PL 84-99 RP Eligibility: Inactive	<div> <div>Middle Creek - Lake County - Unit 3, Scotts Creek left bank (MC03)</div> <div>Middle Creek - Lake County - Unit 2, right bank above Scotts Creek (MC2B)</div> </div>							
General	Operations and Maintenance Manuals	M	M						
	Emergency Supplies and Equipment	A	A						
	Flood Preparedness and Training	M	M						
Levee - Items Affecting PL 84-99 RP Eligibility	Encroachments	U	U						
	Closure Structures	NA	NA						
	Slope Stability	M	A						
	Erosion/Bank Caving	M	A						
	Animal Control	U	U						
	Culverts/Discharge Pipes	NA	NA						
	Underseepage Relief Wells/Toe Drainage Systems	NA	NA						
Levee Embankments - Other Items	Vegetation Growth	M	M						
	Sod Cover	M	A						
	Settlement	M	M						
	Depressions/Rutting	M	M						
	Cracking	A	M						
	Riprap Revetments & Bank Protection	NA	NA						
	Revetments other than Riprap	NA	M						
	Seepage	A	A						
	<b>Legend</b> A Acceptable M Minimally Acceptable U Unacceptable N/A Not Applicable	M U U	Includes Unacceptable observations not likely to prevent performance in next flood event  Serious deficiency noted in past inspection report has not been corrected within the established timeframe  Likely prevents performance in next flood event						







# Middle Creek Left Bank – Unit 1 South

	System: Middle Creek left bank - Unit 1 south Levee System System Rating: Unacceptable Approved SWIF / LOI: No PL 84-99 RP Eligibility: Inactive	Middle Creek Unit 1: Left Bank below Clover Creek (MCR1)	Middle Creek - Lake County Unit 1, left bank below Clover Creek (MC1C)							
General	Operations and Maintenance Manuals	M	M							
	Emergency Supplies and Equipment	A	A							
	Flood Preparedness and Training	M	M							
Levee - Items Affecting PL 84-99 RP Eligibility	Encroachments	M	M							
	Closure Structures	NA	NA							
	Slope Stability	A	U							
	Erosion/Bank Caving	A	U							
	Animal Control	U	M							
	Culverts/Discharge Pipes	NA	M							
	Underseepage Relief Wells/Toe Drainage Systems	NA	NA							
Levee Embankments - Other Items	Vegetation Growth	M	M							
	Sod Cover	A	A							
	Settlement	M	M							
	Depressions/Rutting	M	M							
	Cracking	A	M							
	Riprap Revetments & Bank Protection	NA	NA							
	Revetments other than Riprap	NA	NA							
	Seepage	A	U							
Pump Stations	Pump Stations Operating, Maintenance, Training, & Inspection Records		M							
	Pump Station Operations and Maintenance Equipment Manuals		M							
	Safety Compliance		M							
	Communications (A or M only)		A							
	Plant Building		M							
	Fencing and Gates		A							
	Pumps		M							
	Motors, Engines, Fans, Gear Reducers, Back Stop Devices, etc.		M							
	Sumps/ Wet well		A							
	Mechanical Operating Trash Rakes		NA							
	Non-Mechanical Trash Racks		A							
	Fuel System for Pump Engines		NA							
	Power Source		M							
	Electrical Systems		M							
	Megger Testing on Pump Motors and Critical Power Cables		M							
	Enclosures, Panels, Conduit and Ducts		M							
	Intake and Discharge Pipelines		M							
	Sluice/ Slide Gates		M							
	Flap Gates/ Flap Valves/ Pinch Valves		M							
	Cranes		NA							
	Other Metallic Items (Equipment, Ladders, Platform Anchors, etc)		M							
<b>Legend</b>		M	Includes Unacceptable observations not likely to prevent performance in next flood event							
A Acceptable		M	Serious deficiency noted in past inspection report has not been corrected within the established timeframe							
M Minimally Acceptable		U	Likely prevents performance in next flood event							
U Unacceptable										
N/A Not Applicable										



**BUILDING STRONG®**







# Middle Creek Left Bank – Unit 1 at Clear Lake

	System: Middle Creek left bank - Unit 1 at Clear Lake Levee System System Rating: Unacceptable Approved SWIF / LOI: No PL 84-99 RP Eligibility: Inactive		Middle Creek - Lake County - Unit 1, left bank at Clear Lake confluence (MC1D)							
General	Operations and Maintenance Manuals	M								
	Emergency Supplies and Equipment	A								
	Flood Preparedness and Training	M								
Levee - Items Affecting PL 84-99 RP Eligibility	Encroachments	U								
	Closure Structures	NA								
	Slope Stability	U								
	Erosion/Bank Caving	U								
	Animal Control	M								
	Culverts/Discharge Pipes	NA								
	Underseepage Relief Wells/Toe Drainage Systems	NA								
Levee Embankments - Other Items	Vegetation Growth	M								
	Sod Cover	M								
	Settlement	M								
	Depressions/Rutting	U								
	Cracking	A								
	Riprap Revetments & Bank Protection	NA								
	Revetments other than Riprap	NA								
	Seepage	U								
	<b>Legend</b>		M	Includes Unacceptable observations not likely to prevent performance in next flood event						
	A    Acceptable		U	Serious deficiency noted in past inspection report has not been corrected within the established timeframe						
	M    Minimally Acceptable		U	Likely prevents performance in next flood event						
	U    Unacceptable									
	N/A    Not Applicable									











# Engineer Circular 1165-2-216

## Requests to Alter USACE Projects

**Ryan Larson, PE**

Flood Protection and Navigation Section

Sacramento District

January 23, 2015



**U.S. ARMY**



®

US Army Corps of Engineers  
**BUILDING STRONG**®





# Background

- Presentation to Board August 22, 2014
- Applies to all applications received on or after July 31, 2014
- Provides the Secretary of the Army authority to grant permission to alter a USACE civil works project if
  1. Does not impair usefulness of the project
  2. Not injurious to the public interest





# Coordination with USACE Regulatory Program

- Timing of permissions/permits
- Need for complete applications
- Applications need to disclose if a permit is being requested under 10/404.
- Project descriptions are very important.
- CVFPB permits have always required applicants to get all other necessary permits.





# Other Activities

- Personnel actions
- Scoping the use of “Categorical Permissions”
- Workshop on Feb. 13<sup>th</sup>
- Questions

