

USACE Study Process

American River Common Features & West Sacramento General Reevaluations

Central Valley Flood Protection Board

*Alicia Kirchner
Sacramento District*

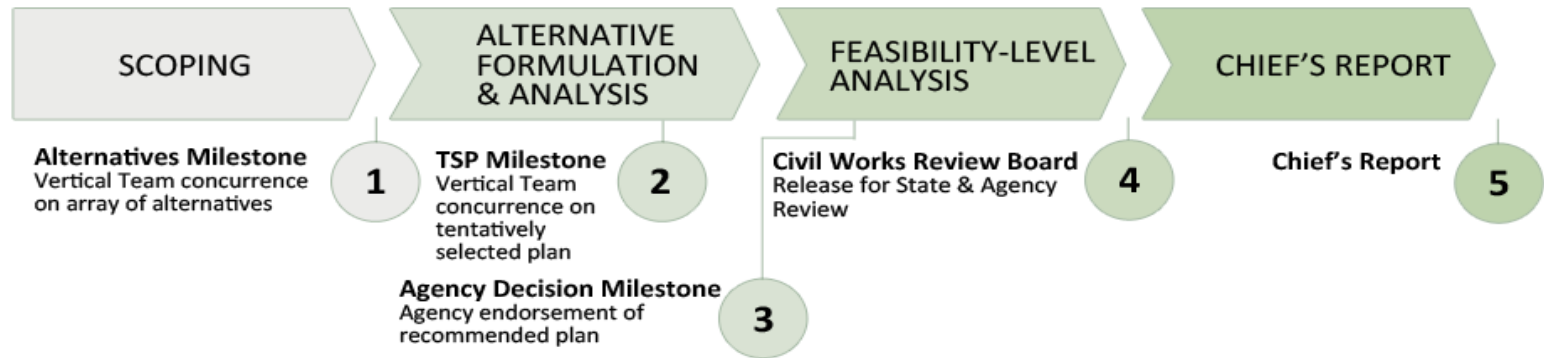
20 November 2015



US Army Corps of Engineers
BUILDING STRONG

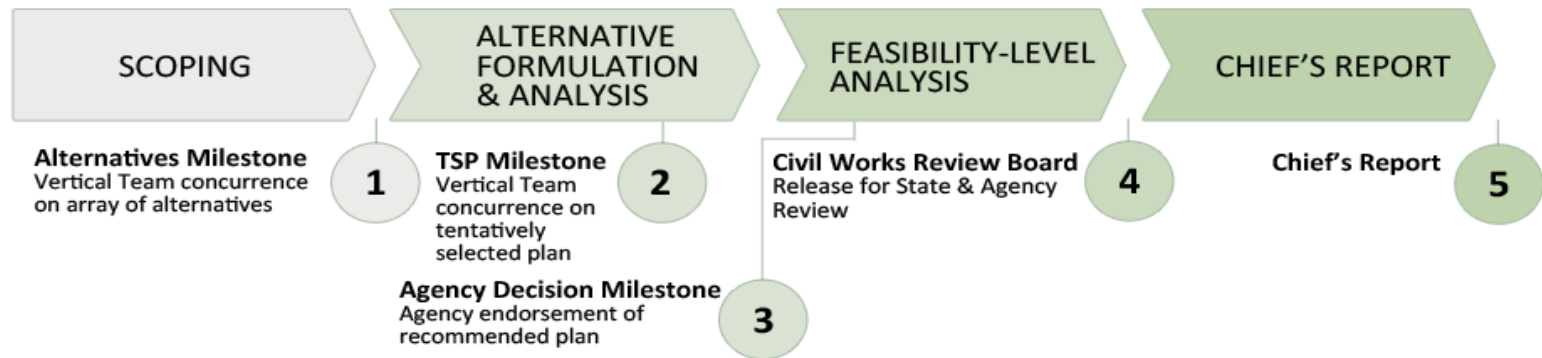


USACE Study Process



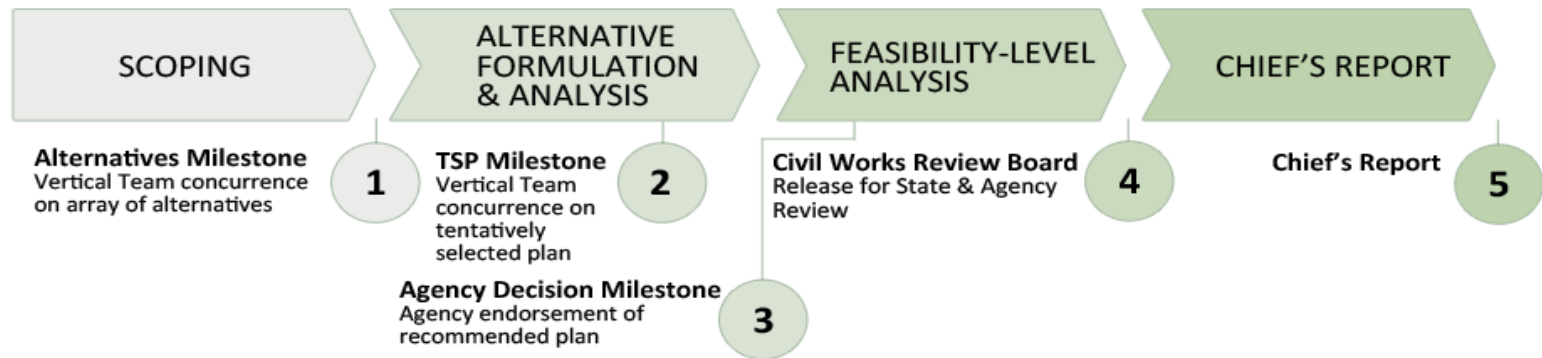
USACE Study Process: Step 1

- Scoping
 - Problems & Opportunities
 - Forecast Future Without Project Conditions
 - Identify Measures
 - Develop Array of Alternatives
- ✓ Alternatives Milestone



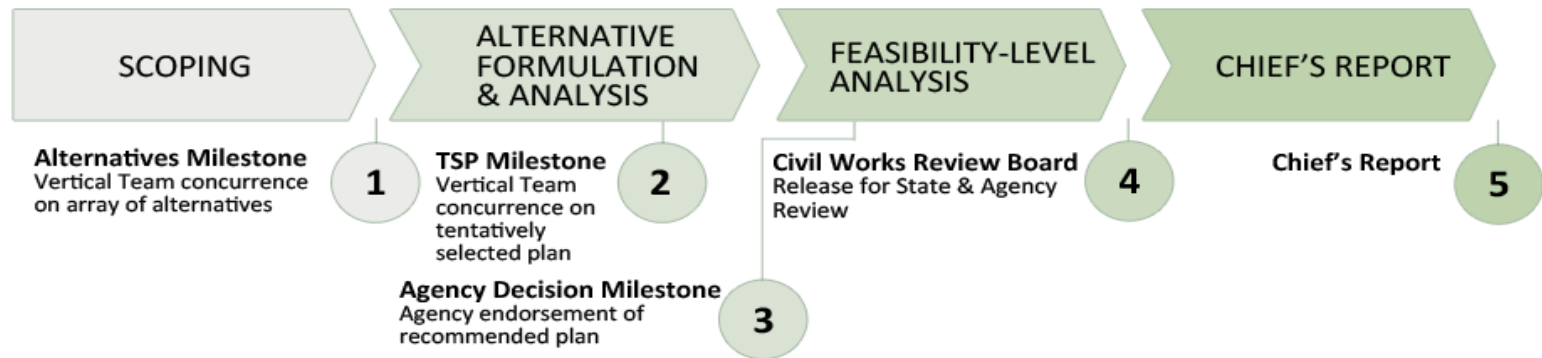
USACE Study Process: Step 2

- Alternative Formulation & Analysis
 - More Fully Develop Best Alternatives
 - Identify Costs and Accomplishments
 - Identify National Economic Development (NED) Alternative
 - Identify Non-Federal Support
 - Identify Tentatively Selected Plan (TSP)
 - Quality Control Review
- ✓ Tentatively Selected Plan Milestone



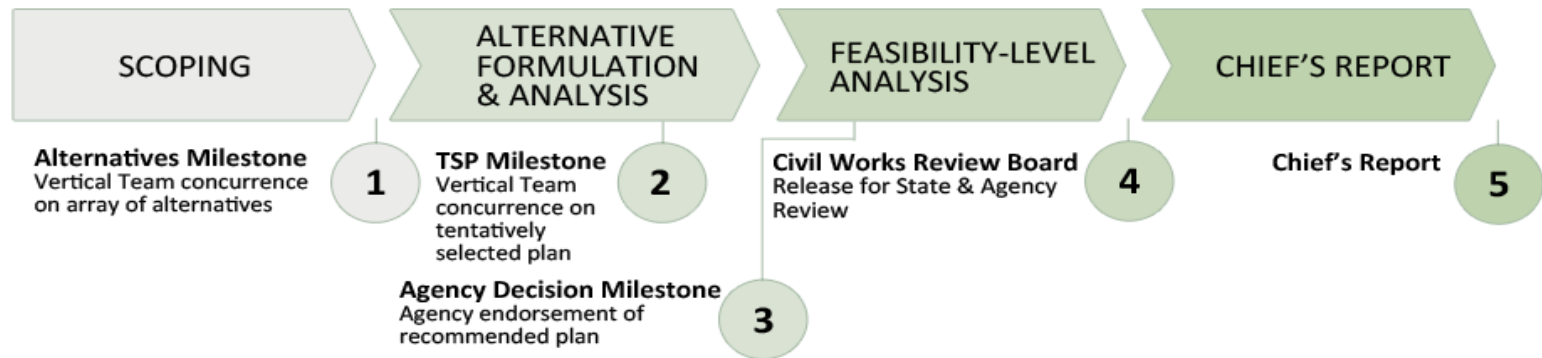
USACE Study Process: Step 3

- Feasibility-Level Analysis
 - Agency Technical & Independent External Reviews
 - Public Review & Initial Policy Reviews
 - Assess all comments and verify/revise TSP
- ✓ Agency Decision Milestone



USACE Study Process: Step 4

- Feasibility-Level Analysis
 - Feasibility Level Design of TSP (and NED if different)
 - Certification of Cost Estimates
 - Biological Opinions
 - Final District Report
 - Complete Policy Review
- ✓ Civil Works Review Board



Civil Works Review Board

What Is It?

- District Commander Presents Study Findings
- Review Teams Present Review Findings
- Regional Commander Endorses
 - BG Mark Toy
- Endorsement by Sponsors
 - Central Valley Flood Protection Board with
 - Leslie Gallagher
 - Department of Water Resources
 - Gary Bardini & Michael Mierzwa
 - Sacramento Area Flood Control Agency
 - Rick Johnson
 - West Sacramento Area Flood Control Agency
 - Greg Fabun
- Vote by CWRB members to release for State & Agency Review and Final NEPA



Civil Works Review Board

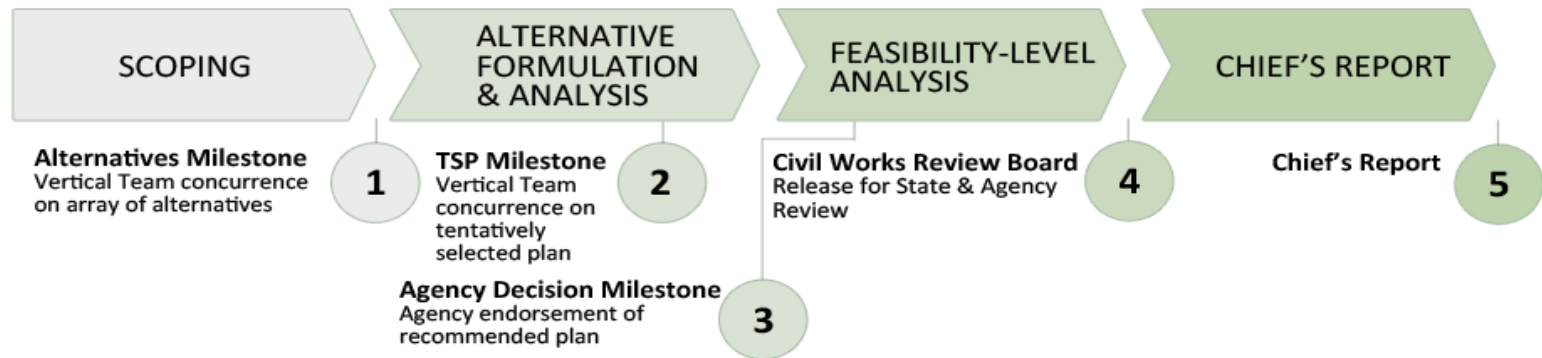
Who Is It?

- Approval Board Comprised of Agency Leadership
 - MG Jackson, Deputy Commanding General for Civil Works
 - Mr. Steve Stockton, Director of Civil Works
 - Mr. Tab Brown, Chief, Planning
 - Mr. James Dalton, Chief, Engineering & Construction
 - Ms. Karen Durham-Aguilera, Chief, Emergency Response
 - Ms. Brenda Johnson-Turner, Chief of Real Estate
 - MG Wehr, Commander, Mississippi River Division
- Observers
 - Office of the Assistant Secretary of the Army (Civil Works)
 - Office of Management and Budget



USACE Study Process: Step 5

- Chief's Report
 - State & Agency Review of the Draft Chief's Report
 - Final NEPA Review
 - Address Comments
 - Finalize Chief's Report (and usually Record of Decision)
- ✓ Chief's Report



Chief's Report

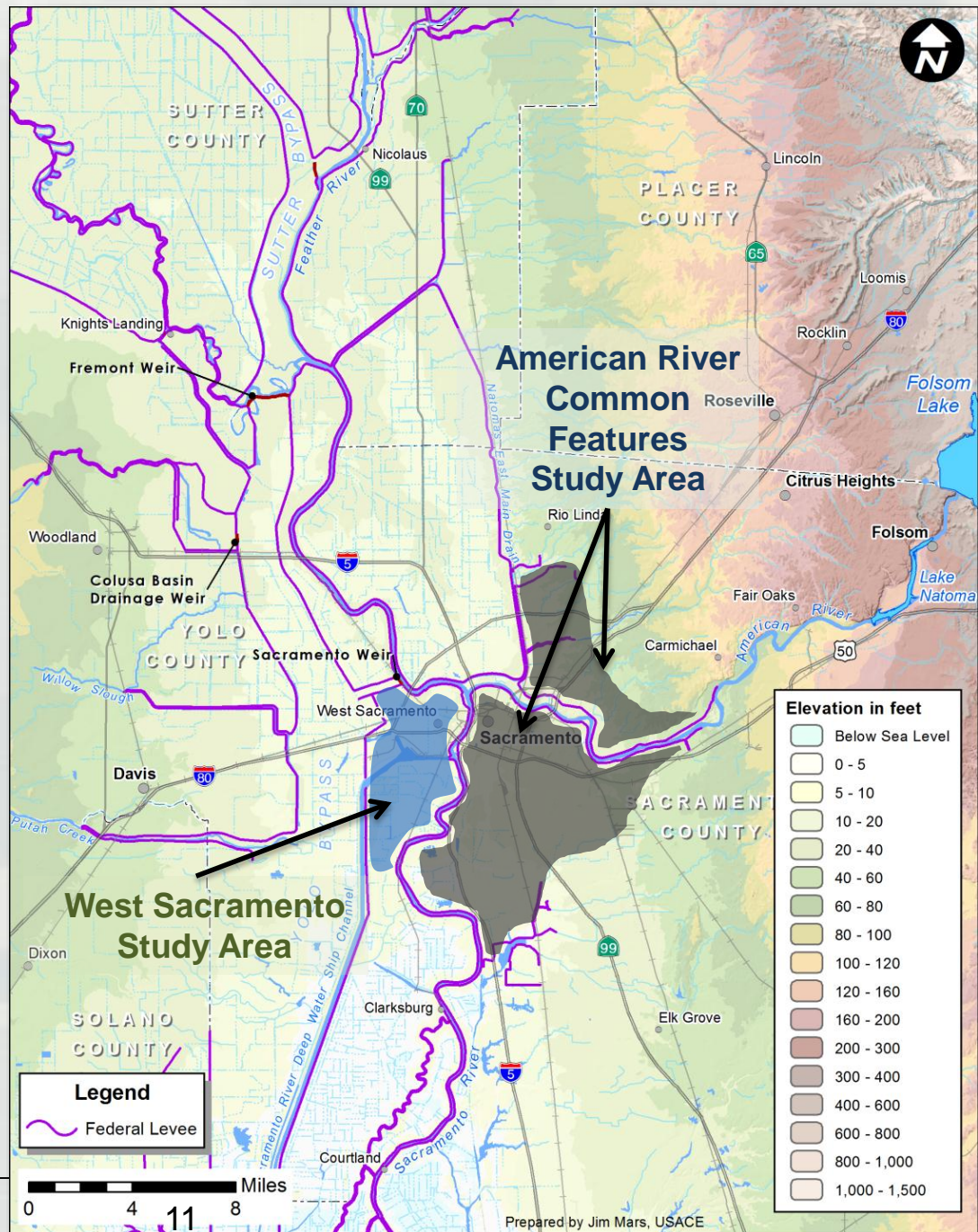
What Is It?

- Project Recommendation of the Chief of Engineers (LTG Bostick)
- Basis for Authorization of Project by Congress
- Transmit to Congress for Awareness
- Transmitted to ASA(CW) for Review
- ASA(CW) Transmits it to Office of Management and Budget
- OMB Reviews for Consistency with Programs and Policies of the Administration
- ASA(CW) transmits Chiefs Report to Congressional authorization Committees
- Future Water Resources Development Act (WRDA)



Purpose of the Projects

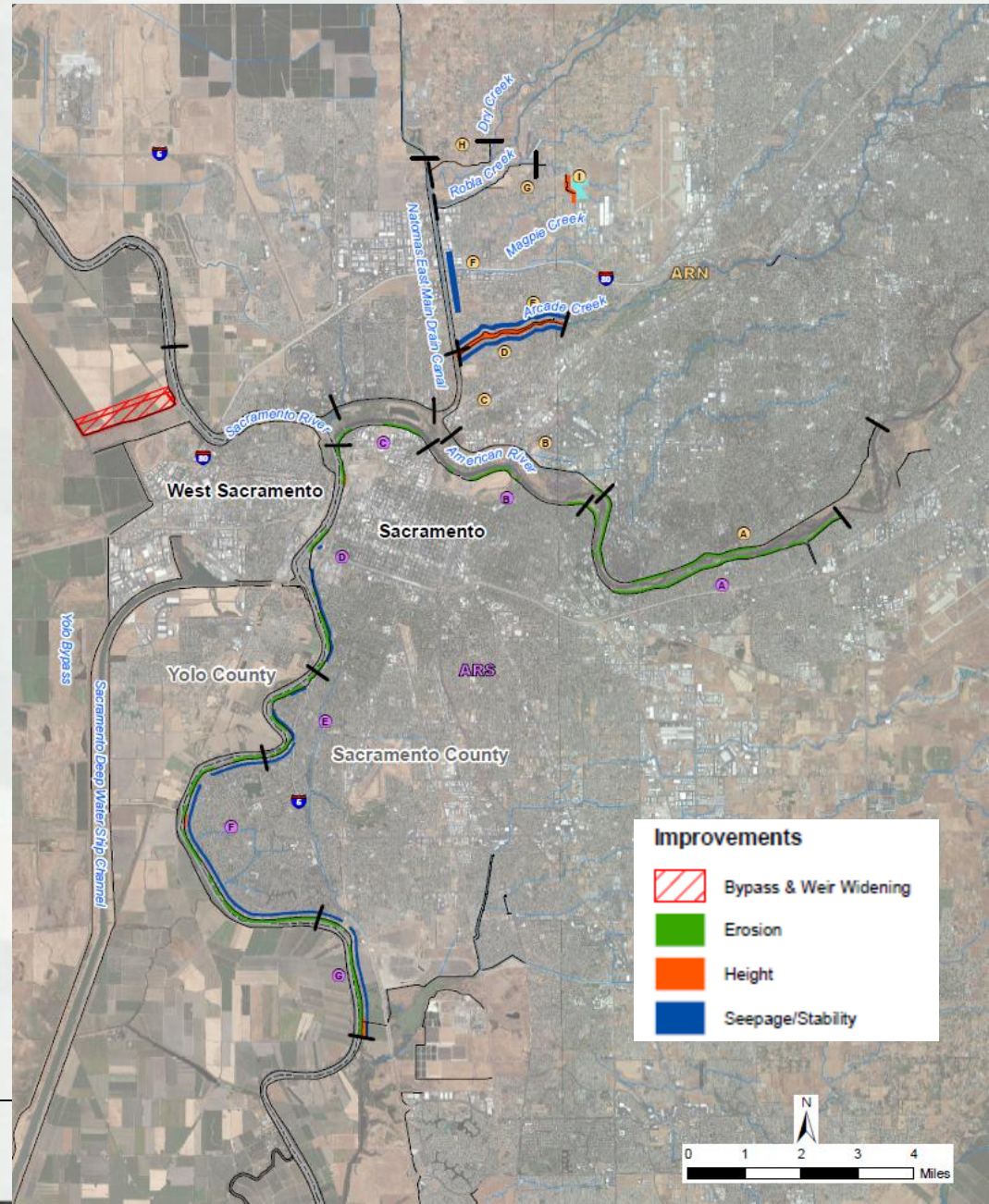
To reduce the risk of flooding in the cities of Sacramento and West Sacramento



American River Common Features Recommended Plan (LPP)

Key Features:

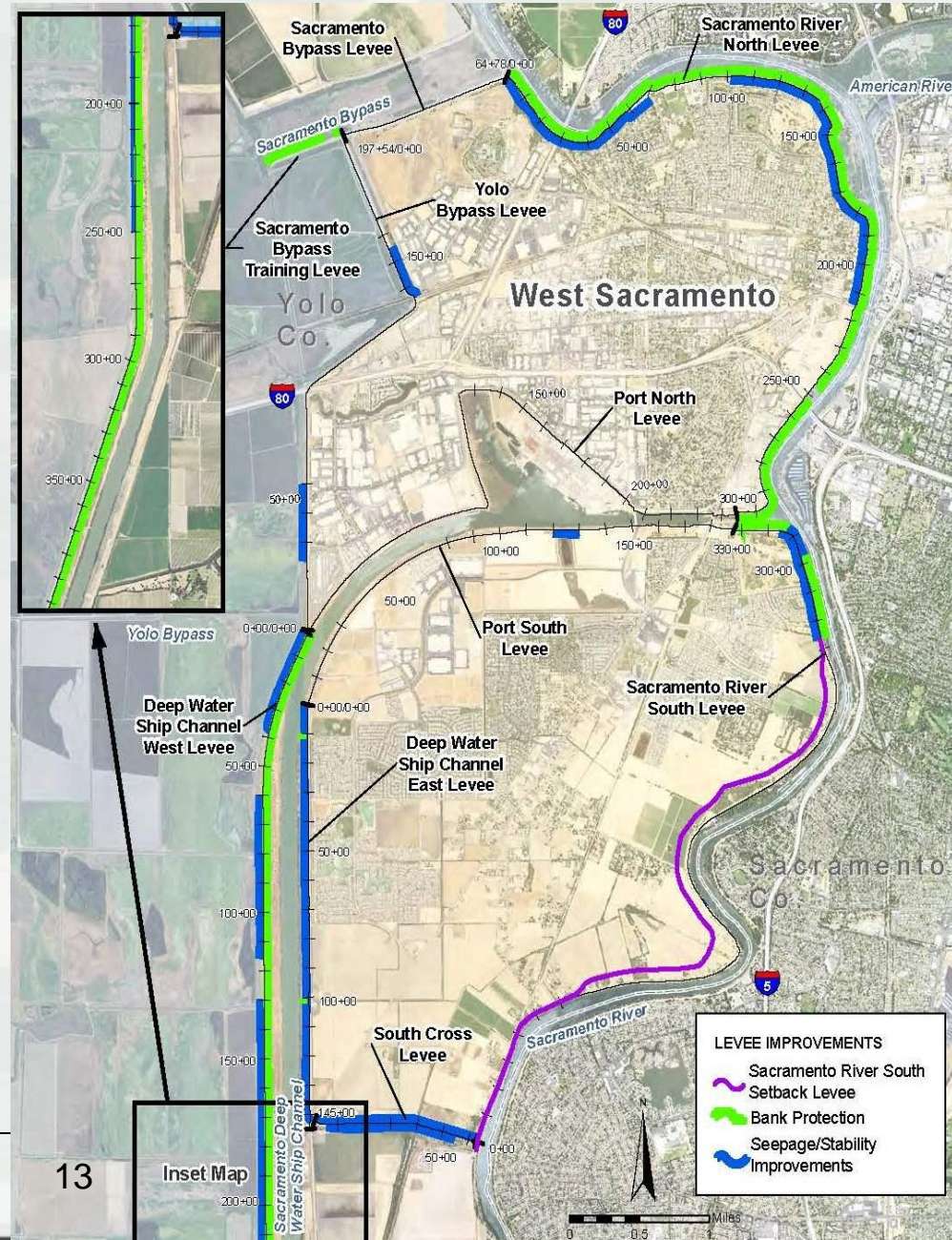
- 13 miles of seepage cutoff walls
- 21 miles of bank protection
- 5 miles levee stabilization
- 5 miles of levee raises
- Widen the Sac Weir and Bypass by 1,500 feet
- Reduces risk to 500,000 people, 125,000 structures, with \$62 billion in damageable property
- Project Cost \$1,903,987



West Sacramento Recommended Plan NED

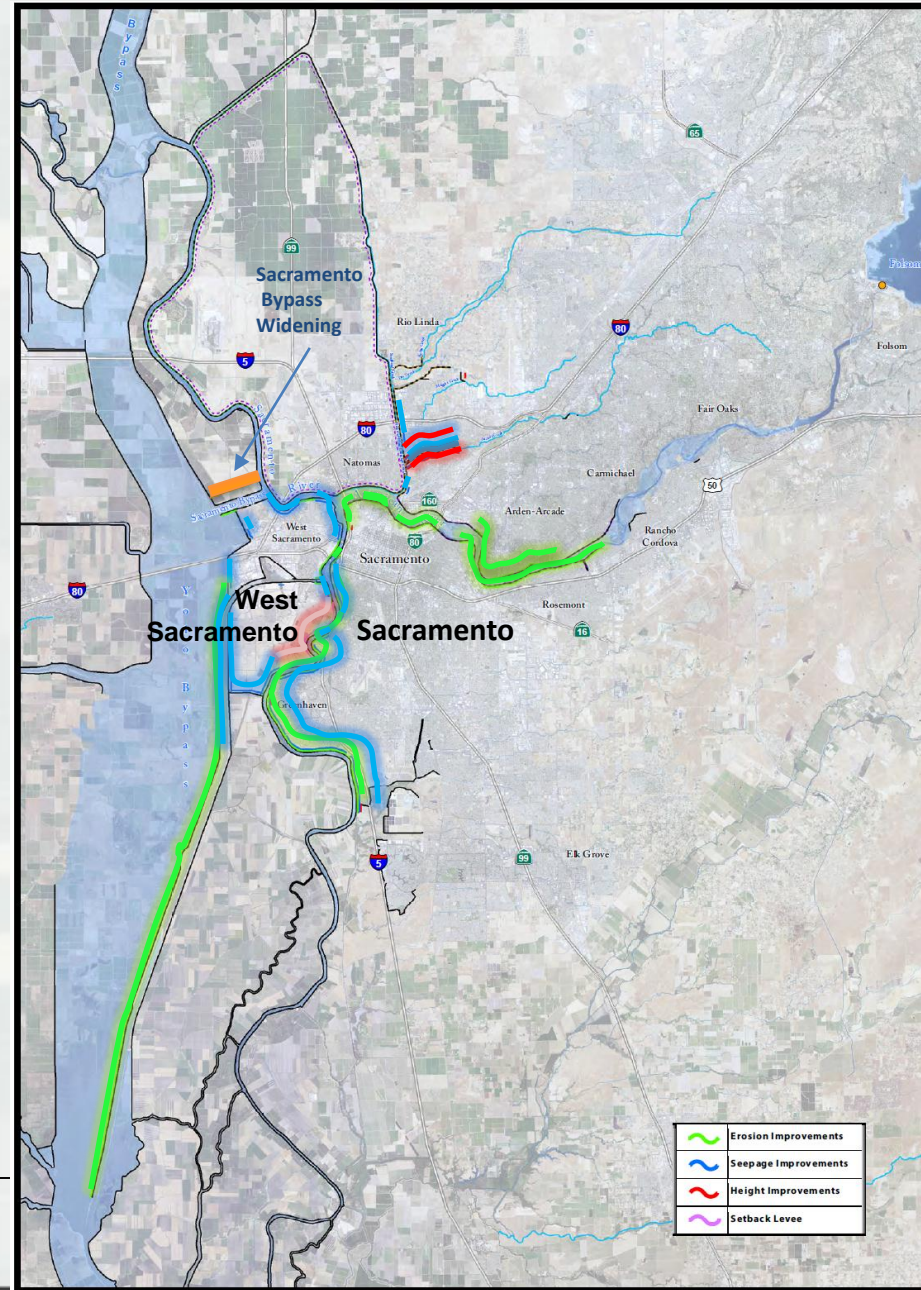
Key Features:

- 16 miles of seepage cutoff walls
- 23.5 miles of bank protection
 - Includes 17 miles of improvements to Sacramento River Deep Water Ship Channel
- 3.8 miles of setback levee
- Reduces risk to 48,000 people, 18,000 structures, with \$4.7 billion in damageable property
- Project Cost \$1,957,064



The Recommended Plans

- Each plan complete and separable
- Compatible
- Contribute to Regional Risk Reduction
- More Resilient System



Questions?



BUILDING STRONG®