

CVFPB Meeting June 27, 2014

## USACE INSPECTION RESULTS

Ryan Larson, P.E.



**U.S. ARMY**



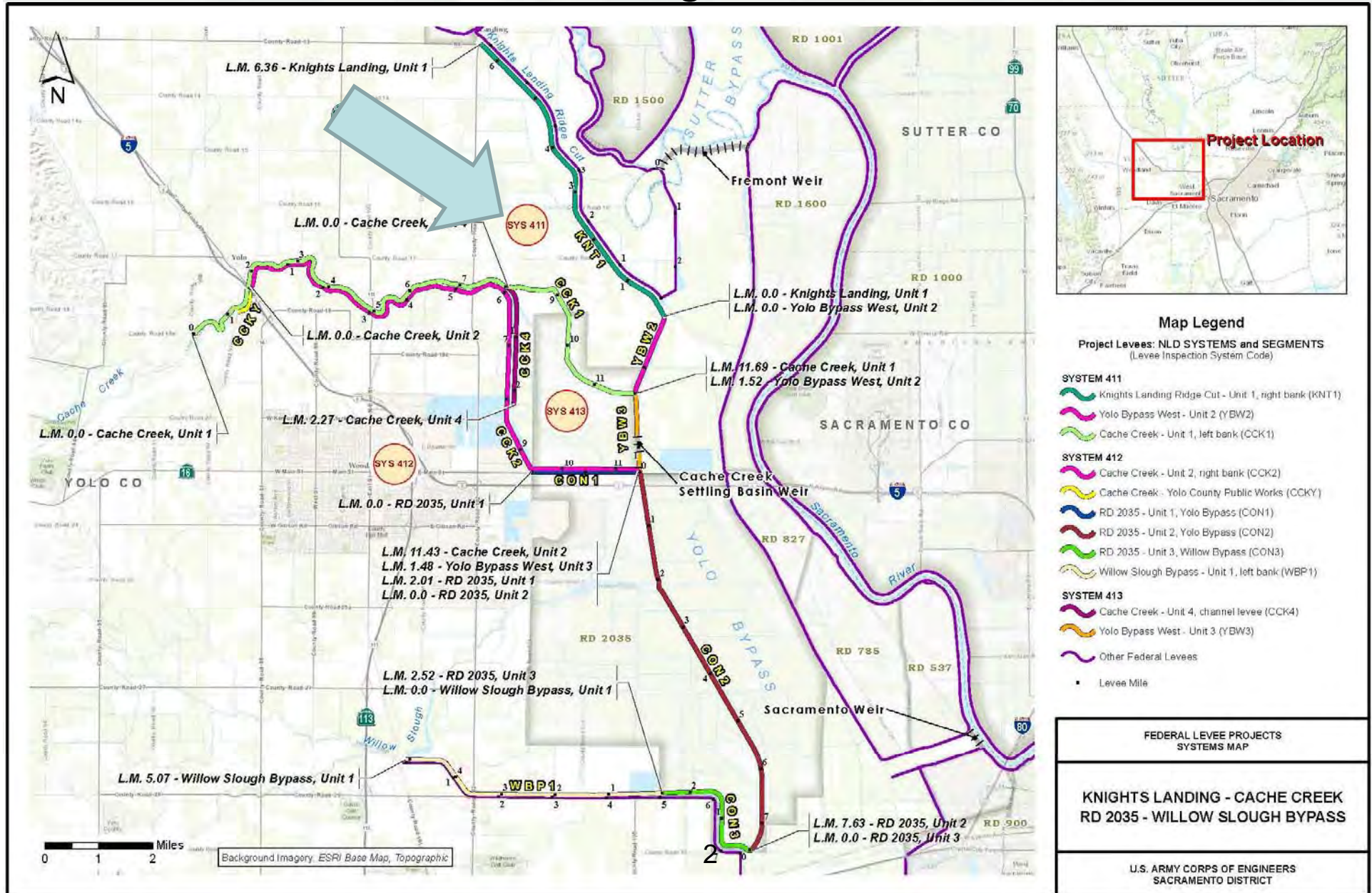
®

US Army Corps of Engineers  
**BUILDING STRONG**®





# Cache Creek Unit 1 – Yolo Bypass Unit 2 – Knights Landing Unit 1





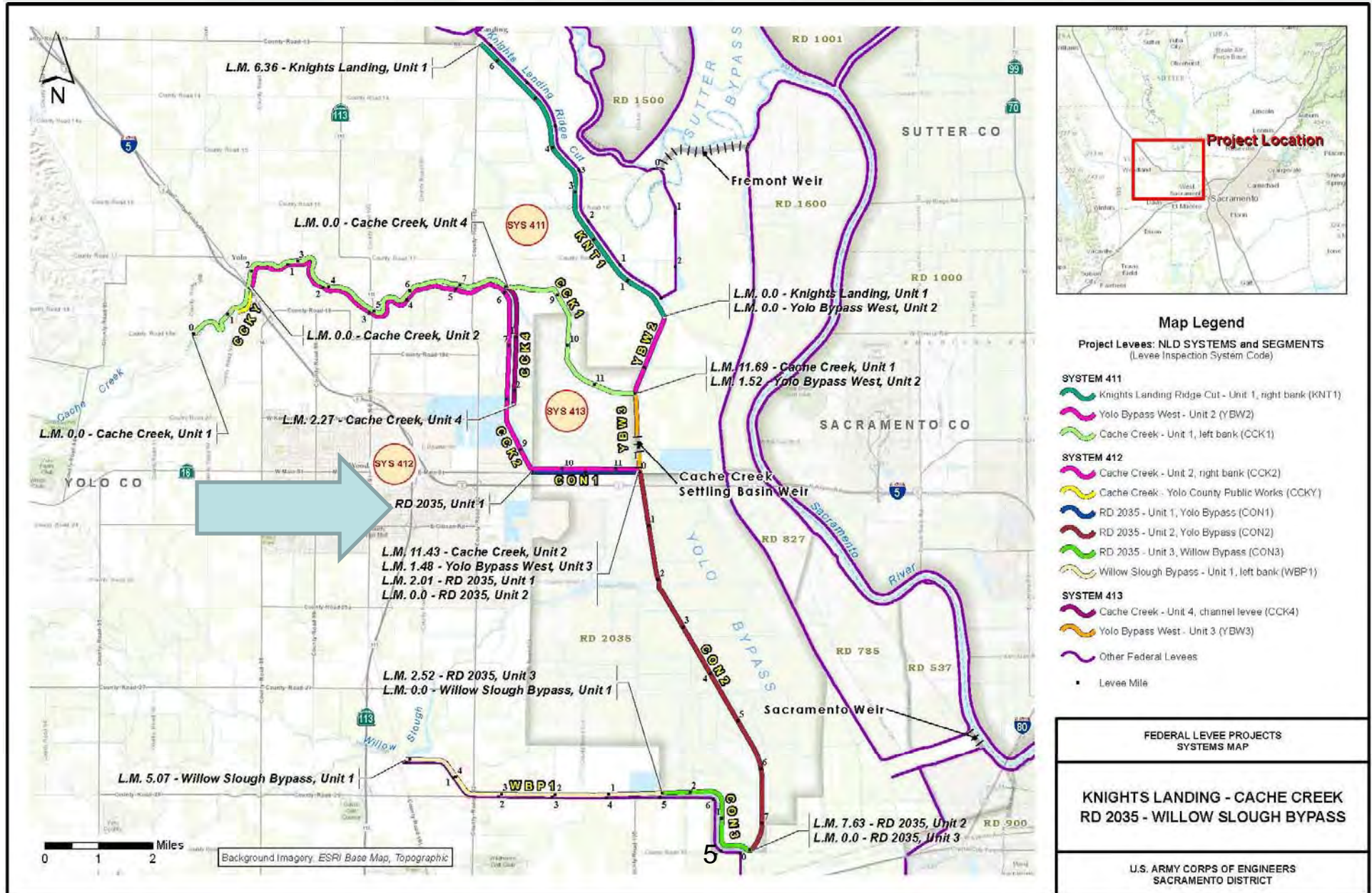
System: Cache Creek U1 - Yolo Bypass U2 - Knights Landing U1 System Rating: Unacceptable Approved SWIF / LOI: No PL 84-99 RP Eligibility: Inactive		Knights Landing Ridge Cut - Unit 1, Right Bank (KNT1)	Yolo Bypass - West Levee - Unit 2 (YBW2)	Cache Creek - Unit 1, Left Bank (CCK1)					
General	Operations and Maintenance Manuals	A	M	M					
	Emergency Supplies and Equipment	A	A	A					
	Flood Preparedness and Training	M	M	M					
Levee - Items Affecting PL 84-99 RP Eligibility	Encroachments	U	U	U					
	Closure Structures	NA	NA	NA					
	Slope Stability	U	A	M					
	Erosion/Bank Caving	U	M	U					
	Animal Control	U	M	M					
	Culverts/Discharge Pipes	NA	NA	NA					
	Underseepage Relief Wells/Toe Drainage Systems	NA	NA	NA					
Levee Embankments - Other Items	Vegetation Growth	M	M	M					
	Sod Cover	M	M	M					
	Settlement	M	M	M					
	Depressions/Rutting	U	A	M					
	Cracking	U	M	M					
	Riprap Revetments & Bank Protection	A	M	A					
	Revetments other than Riprap	NA	NA	A					
	Seepage	M	M	M					
<b>Legend</b> A    Acceptable M    Minimally Acceptable U    Unacceptable N/A    Not Applicable RP    Rehabilitation Program (Note: flood fight assistance available regardless of eligibility status)		<div>M</div>	<div>U</div>	<div>U</div>	Includes Unacceptable observations not likely to prevent performance in next flood event Serious deficiency noted in past inspection report has not been corrected Likely prevents performance in next flood event				







# Cache Creek – RD 2035 – Willow Bypass System





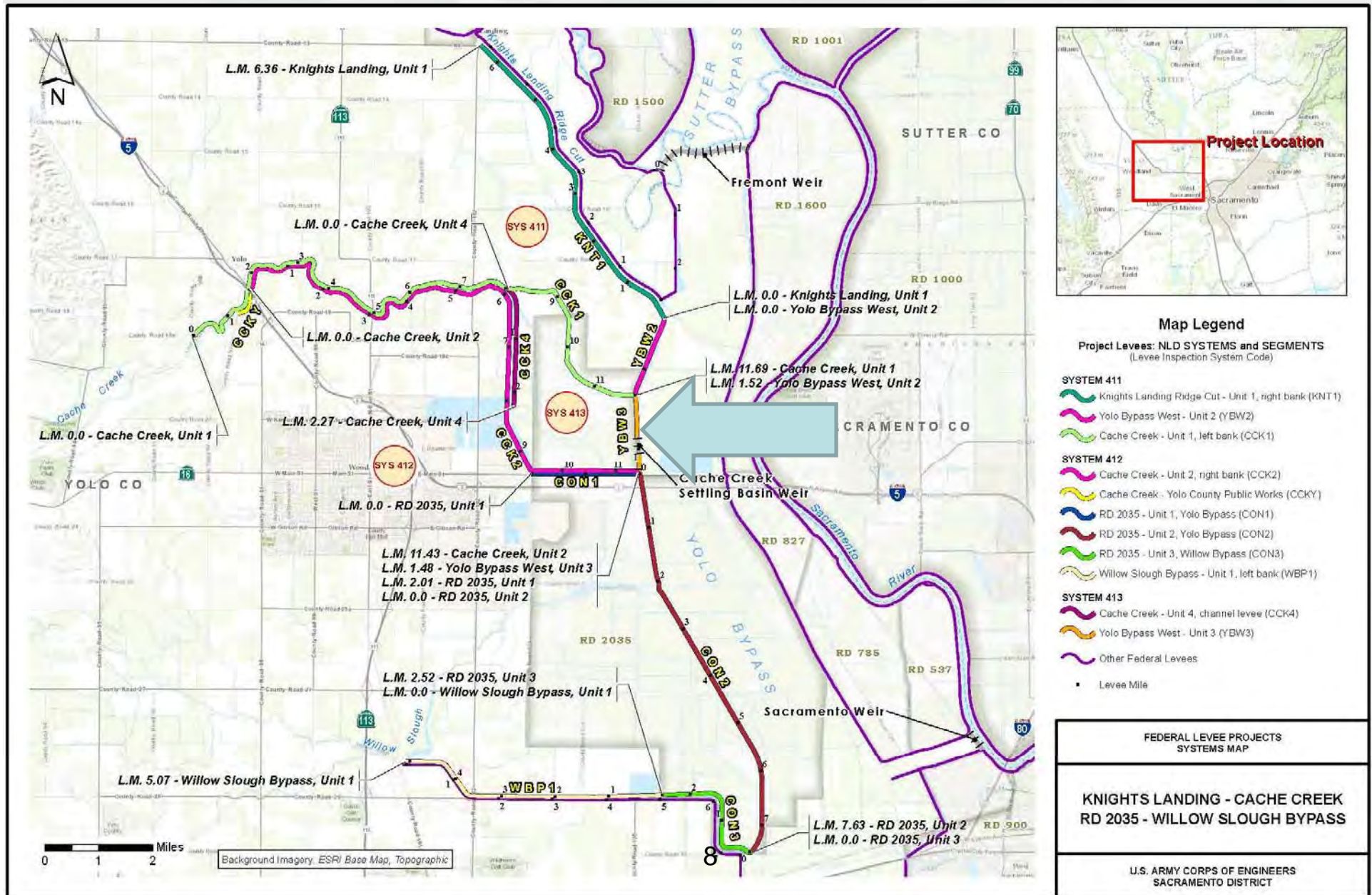








# Yolo Bypass West Levee – Cache Creek Unit 4





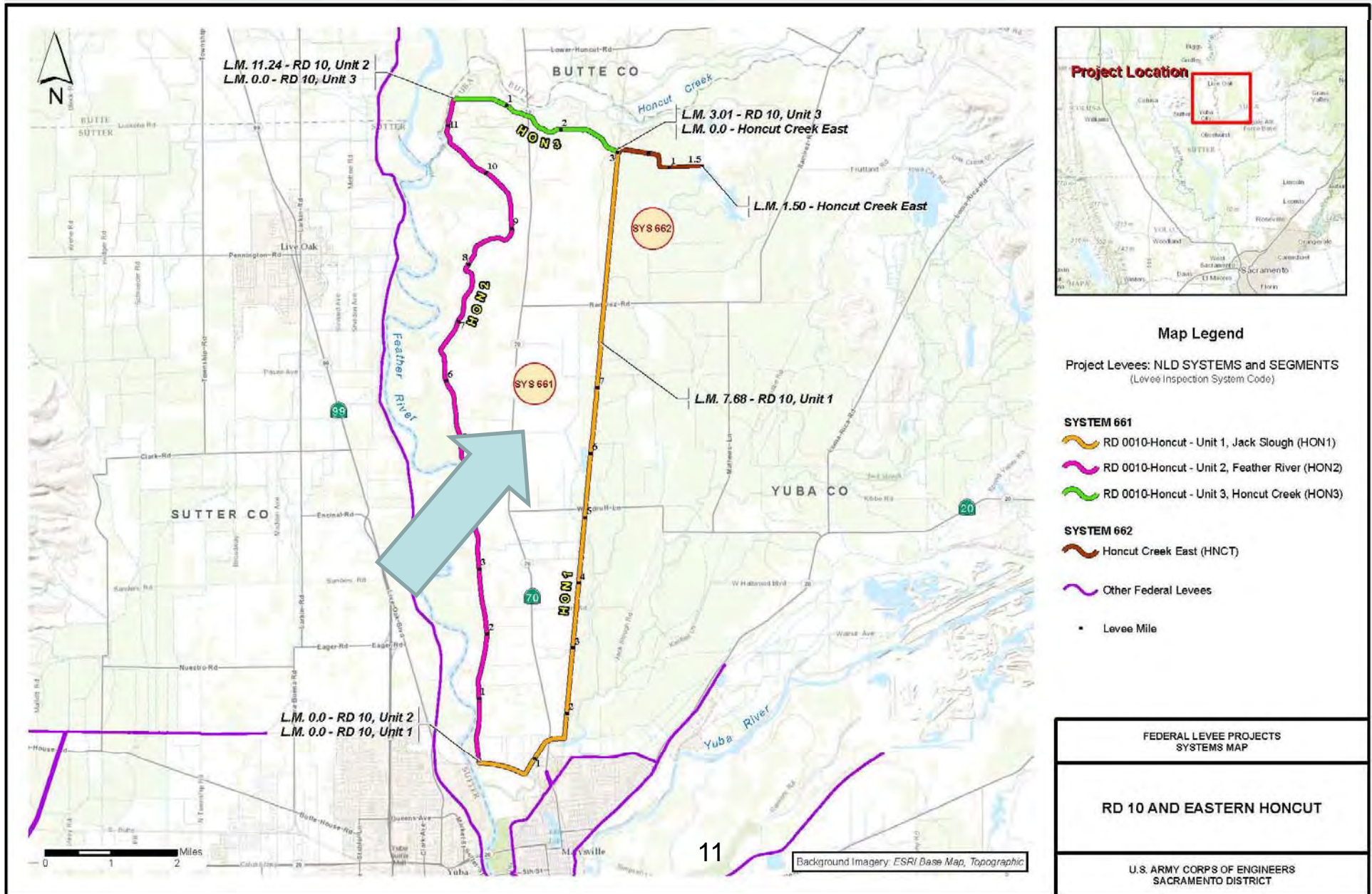
System: Yolo Bypass West Levee - Cache Creek Unit 4 Levee System Rating: Unacceptable Approved SWIF / LOI: No PL 84-99 RP Eligibility: Inactive		Cache Creek - Unit 4, Channel Levee Left Bank (CCK4)	Yolo Bypass - West Levee - Unit 3 (YBW3)						
General	Operations and Maintenance Manuals	M	M						
	Emergency Supplies and Equipment	A	A						
	Flood Preparedness and Training	M	M						
Levee - Items Affecting PL 84-99 RP Eligibility	Encroachments	M	U						
	Closure Structures	N/A	N/A						
	Slope Stability	A	A						
	Erosion/Bank Caving	M	M						
	Animal Control	U	M						
	Culverts/Discharge Pipes	N/A	N/A						
	Underseepage Relief Wells/Toe Drainage Systems	N/A	N/A						
Levee Embankments - Other Items	Vegetation Growth	A	A						
	Sod Cover	A	A						
	Settlement	A	A						
	Depressions/Rutting	M	A						
	Cracking	A	M						
	Riprap Revetments & Bank Protection	N/A	M						
	Revetments other than Riprap	N/A	N/A						
	Seepage	A	A						
<b>Legend</b> <div> <div>A</div> <div>Acceptable</div> </div> <div> <div>M</div> <div>Minimally Acceptable</div> </div> <div> <div>U</div> <div>Unacceptable</div> </div> <div> <div>N/A</div> <div>Not Applicable</div> </div> <div> <div>RP</div> <div>Rehabilitation Program (Note: flood fight assistance available regardless of eligibility status)</div> </div> <div> <div>M</div> <div>Includes Unacceptable observations not likely to prevent performance in next flood event</div> </div> <div> <div>U</div> <div>Serious deficiency noted in past inspection report has not been corrected within the established timeframe</div> </div> <div> <div>U</div> <div>Likely prevents performance in next flood event</div> </div>									







# RD 10 – Honcut Drainage Basin





	<p><b>System: RD 10 - Honcut</b>  <b>Drainage Basin Levee System</b>  <b>System Rating: Unacceptable</b>  <b>Approved SWIF / LOI: No</b>  <b>PL 84-99 RP Eligibility: Inactive</b></p>				
		RD 10 - Honcut - Unit 1, Jack Slough (HON1)	RD 10 - Honcut - Unit 2, Feather River (HON2)	RD 10 - Honcut - Unit 3, Honcut Creek (HON3)	
General	Operations and Maintenance Manuals	M	M	M	
	Emergency Supplies and Equipment	M	M	M	
	Flood Preparedness and Training	M	M	M	
Levee - Items Affecting PL 84-99 RP Eligibility	Encroachments	U	U	U	
	Closure Structures	N/A	N/A	N/A	
	Slope Stability	M	M	M	
	Erosion/Bank Caving	U	A	A	
	Animal Control	U	U	U	
	Culverts/Discharge Pipes	N/A	N/A	N/A	
	Underseepage Relief Wells/Toe Drainage Systems	N/A	N/A	N/A	
Levee Embankments - Other Items	Vegetation Growth	M	M	M	
	Sod Cover	M	M	M	
	Settlement	A	M	A	
	Depressions/Rutting	M	M	M	
	Cracking	M	A	A	
	Riprap Revetments & Bank Protection	A	M	M	
	Revetments other than Riprap	N/A	N/A	N/A	
	Seepage	M	U	M	
	<p><b>Legend</b></p> <p>A Acceptable</p> <p>M Minimally Acceptable</p> <p>U Unacceptable</p> <p>N/A Not Applicable</p> <p>RP Rehabilitation Program (Note: flood fight assistance available regardless of eligibility status)</p>				

M

Includes Unacceptable observations not likely to prevent performance in next flood event

U

Serious deficiency noted in past inspection report has not been corrected within the established timeframe

U

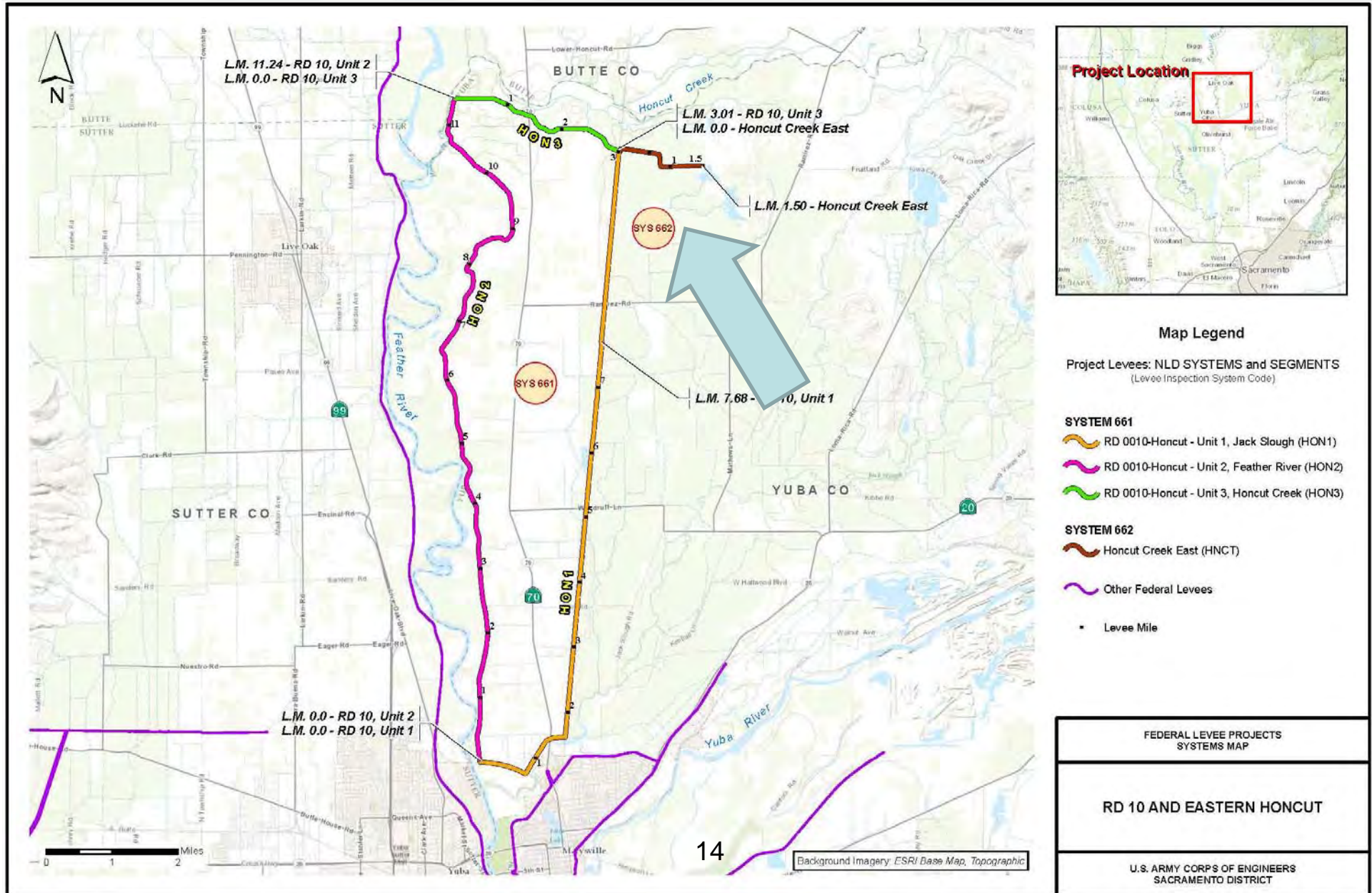
Likely prevents performance in next flood event







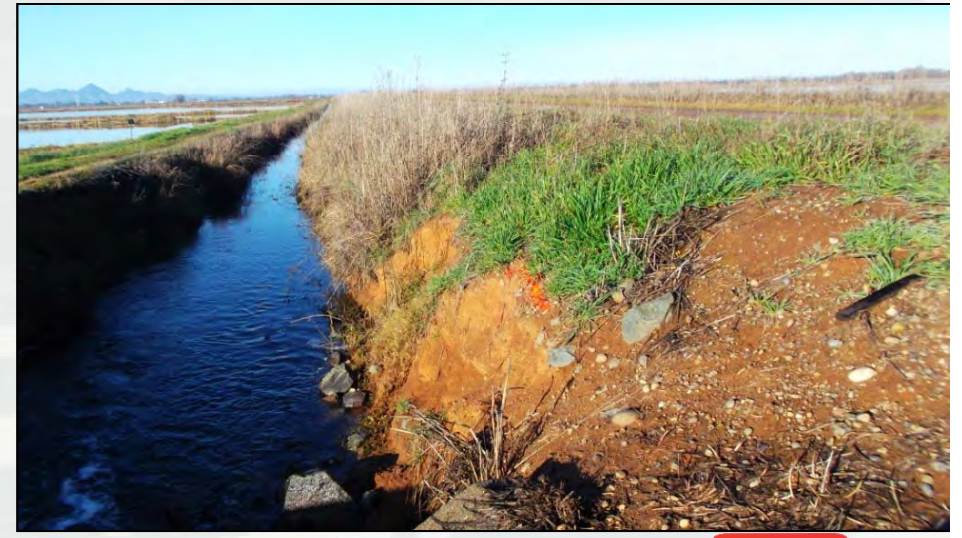
# Honcut Creek Area - Eastern





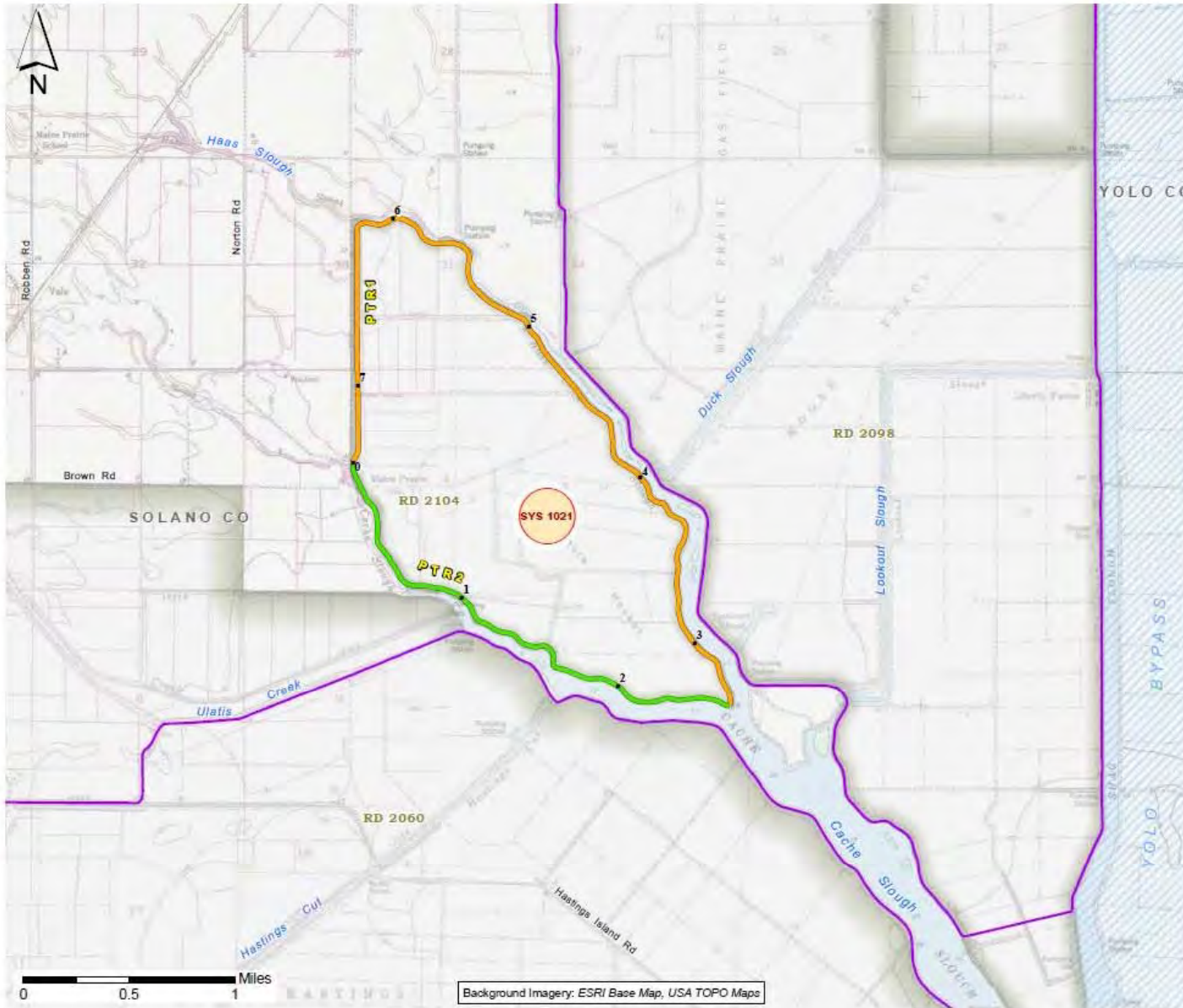
	System: Honcut Creek Area - Eastern Levee System System Rating: Unacceptable Approved SWIF / LOI: No PL 84-99 RP Eligibility: Inactive		Honcut Creek Area - Eastern (HNCT)
General	Operations and Maintenance Manuals	M	
	Emergency Supplies and Equipment	M	
	Flood Preparedness and Training	M	
Levee - Items Affecting PL 84-99 RP Eligibility	Encroachments	U	
	Closure Structures	N/A	
	Slope Stability	M	
	Erosion/Bank Caving	U	
	Animal Control	U	
	Culverts/Discharge Pipes	N/A	
	Underseepage Relief Wells/Toe Drainage Systems	N/A	
	Levee Embankments - Other Items	Vegetation Growth	
Sod Cover		M	
Settlement		U	
Depressions/Rutting		M	
Cracking		A	
Riprap Revetments & Bank Protection		N/A	
Revetments other than Riprap		N/A	
Seepage		M	
<div><div><div><b>Legend</b></div><div>A    Acceptable</div><div>M    Minimally Acceptable</div><div>U    Unacceptable</div><div>N/A    Not Applicable</div><div>RP    Rehabilitation Program (Note: flood fight assistance available regardless of eligibility status)</div></div><div><div><div>M</div><div>U</div><div>U</div></div><div><div>Includes Unacceptable observations not likely to prevent performance in next flood event</div><div>Serious deficiency noted in past inspection report has not been corrected within the established timeframe</div><div>Likely prevents performance in next flood event</div></div></div></div>			







# RD 2104 – Peters Pocket



## Map Legend

NLD SYSTEMS and SEGMENTS  
(Levee Inspection System Code)

### SYSTEM 1021

- RD 2104 - Unit 1, Haas Slough (PTR1)
- RD 2104 - Unit 2, Cache Slough (PTR2)

Other Federal Levees

Yolo Bypass

- Levee Mile\*

\*Mileage obtained from DWR levee inspection resources

FEDERAL LEVEE PROJECTS  
SYSTEM MAP

RD 2104-PETERS POCKET

U.S. ARMY CORPS OF ENGINEERS  
SACRAMENTO DISTRICT







