

CVFPB Meeting September 26, 2014

## USACE INSPECTION RESULTS

Ryan Larson, P.E.



**U.S. ARMY**

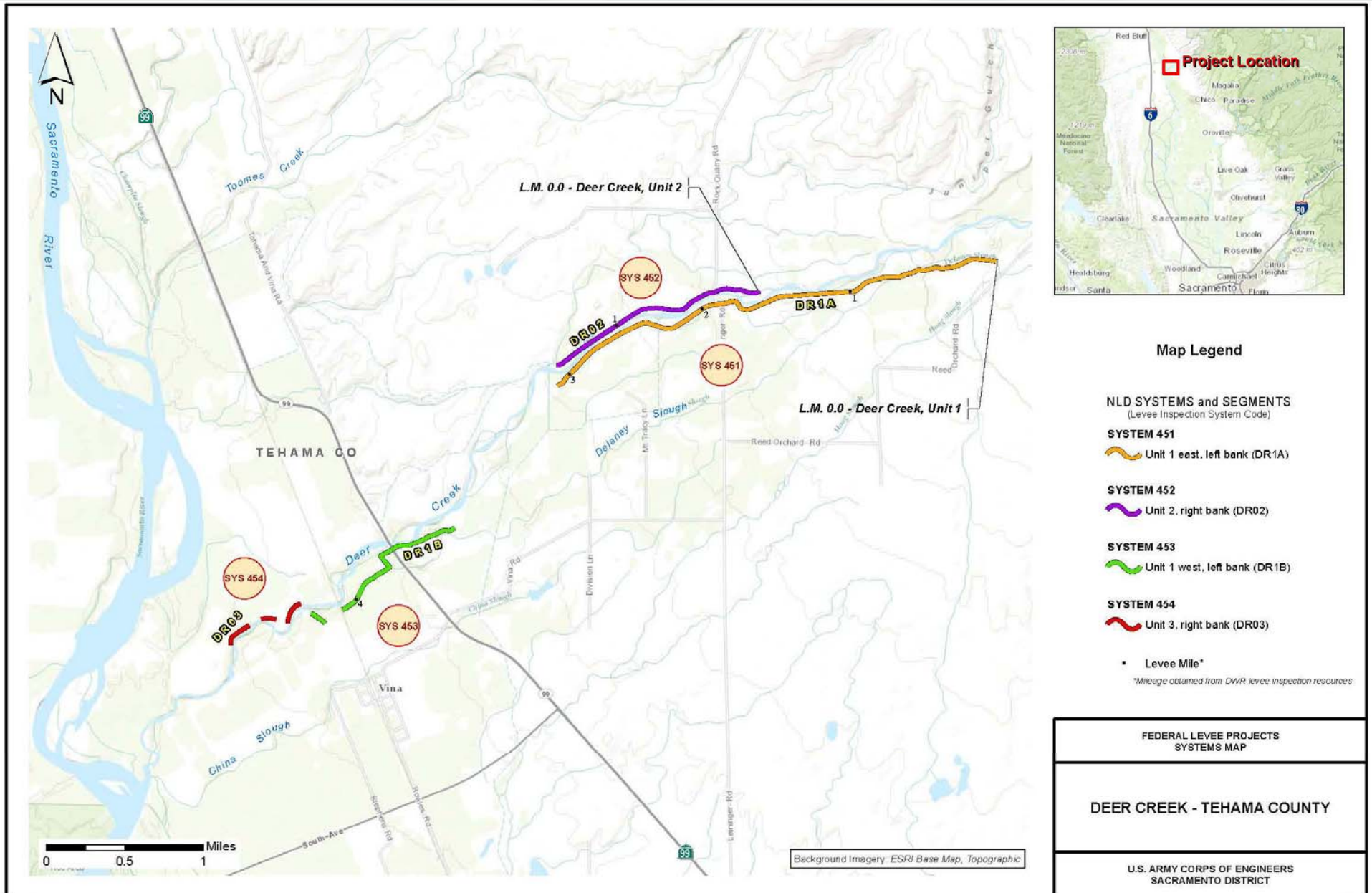


®

US Army Corps of Engineers  
**BUILDING STRONG**®



# Deer Creek – Tehama County Systems



# Deer Creek Left Bank, Unit 1 East – Tehama County

<b>System: Deer Creek Left Bank, Unit 1 East - Tehama County Levee System</b> <b>System Rating: Unacceptable</b> <b>Approved SWIF / LOI: No</b> <b>PL 84-99 RP Eligibility: Inactive</b>		<div>Deer Creek - Tehama County - Unit 1 east, left bank (DR1A)</div>							
General	Operations and Maintenance Manuals	A							
	Emergency Supplies and Equipment	M							
	Flood Preparedness and Training	M							
Levee - Items Affecting PL 84-99 RP Eligibility	Encroachments	U							
	Closure Structures	NA							
	Slope Stability	A							
	Erosion/Bank Caving	M							
	Animal Control	U							
	Culverts/Discharge Pipes	NA							
	Underseepage Relief Wells/Toe Drainage Systems	NA							
Levee Embankments - Other Items	Vegetation Growth	M							
	Sod Cover	M							
	Settlement	M							
	Depressions/Rutting	A							
	Cracking	A							
	Riprap Revetments & Bank Protection	M							
	Revetments other than Riprap	NA							
	Seepage	A							
<b>Legend</b> A Acceptable M Minimally Acceptable U Unacceptable N/A Not Applicable RP Rehabilitation Program (Note: flood fight assistance available regardless of eligibility status)		M U U	Includes Unacceptable observations not likely to prevent performance in next flood event Serious deficiency noted in past inspection report has not been corrected Likely prevents performance in next flood event						



**BUILDING STRONG®**

# Deer Creek Left Bank, Unit 1 West – Tehama County

System: Deer Creek Left Bank, Unit 1 West - Tehama County Levee System System Rating: Unacceptable Approved SWIF / LOI: No PL 84-99 RP Eligibility: Inactive		Deer Creek - Tehama County - Unit 1 West, Left Bank (DR1B)							
General	Operations and Maintenance Manuals	A							
	Emergency Supplies and Equipment	M							
	Flood Preparedness and Training	M							
Levee - Items Affecting PL 84-99 RP Eligibility	Encroachments	U							
	Closure Structures	NA							
	Slope Stability	M							
	Erosion/Bank Caving	M							
	Animal Control	U							
	Culverts/Discharge Pipes	NA							
	Underseepage Relief Wells/Toe Drainage Systems	NA							
Levee Embankments - Other Items	Vegetation Growth	M							
	Sod Cover	NA							
	Settlement	A							
	Depressions/Rutting	A							
	Cracking	A							
	Riprap Revetments & Bank Protection	M							
	Revetments other than Riprap	NA							
	Seepage	M							
<b>Legend</b> A Acceptable M Minimally Acceptable U Unacceptable N/A Not Applicable RP Rehabilitation Program (Note: flood fight assistance available regardless of eligibility status)		M Includes Unacceptable observations not likely to prevent performance in next flood event U Serious deficiency noted in past inspection report has not been corrected U Likely prevents performance in next flood event							



**BUILDING STRONG®**

# Deer Creek Left Bank, Unit 2 – Tehama County

<b>System: Deer Creek Left Bank, Unit 2 - Tehama County Levee System</b> <b>System Rating: Unacceptable</b> <b>Approved SWIF / LOI: No</b> <b>PL 84-99 RP Eligibility: Inactive</b>		Deer Creek - Tehama County - Unit 2, right bank (DR02)							
General	Operations and Maintenance Manuals	A							
	Emergency Supplies and Equipment	M							
	Flood Preparedness and Training	M							
Levee - Items Affecting PL 84-99 RP Eligibility	Encroachments	M							
	Closure Structures	NA							
	Slope Stability	A							
	Erosion/Bank Caving	U							
	Animal Control	A							
	Culverts/Discharge Pipes	NA							
	Underseepage Relief Wells/Toe Drainage Systems	NA							
Levee Embankments - Other Items	Vegetation Growth	M							
	Sod Cover	NA							
	Settlement	U							
	Depressions/Rutting	M							
	Cracking	A							
	Riprap Revetments & Bank Protection	M							
	Revetments other than Riprap	NA							
	Seepage	A							
<b>Legend</b> A Acceptable M Minimally Acceptable U Unacceptable N/A Not Applicable RP Rehabilitation Program (Note: flood fight assistance available regardless of eligibility status)		M Includes Unacceptable observations not likely to prevent performance in next flood event U Serious deficiency noted in past inspection report has not been corrected U Likely prevents performance in next flood event							



**BUILDING STRONG®**

# Deer Creek Left Bank, Unit 3 – Tehama County

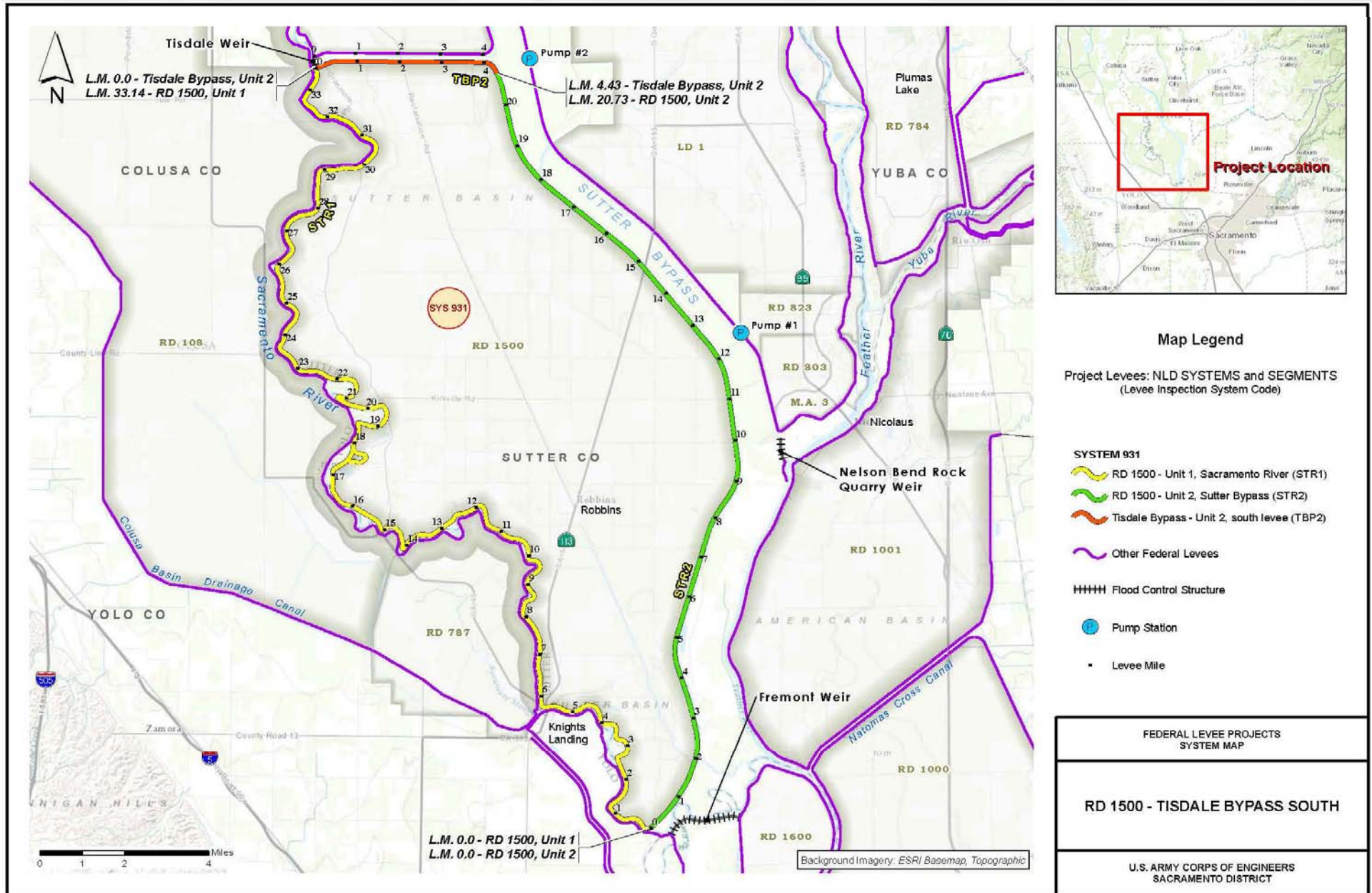
<b>System: Deer Creek Left Bank, Unit 3 - Tehama County Levee System</b> <b>System Rating: Unacceptable</b> <b>Approved SWIF / LOI: No</b> <b>PL 84-99 RP Eligibility: Inactive</b>		<div>Deer Creek - Tehama County - Unit 3, right bank (DR03)</div>							
General	Operations and Maintenance Manuals	A							
	Emergency Supplies and Equipment	M							
	Flood Preparedness and Training	M							
Levee - Items Affecting PL 84-99 RP Eligibility	Encroachments	U							
	Closure Structures	U							
	Slope Stability	U							
	Erosion/Bank Caving	U							
	Animal Control	U							
	Culverts/Discharge Pipes	U							
	Underseepage Relief Wells/Toe Drainage Systems	U							
Levee Embankments - Other Items	Vegetation Growth	U							
	Sod Cover	U							
	Settlement	U							
	Depressions/Rutting	U							
	Cracking	U							
	Riprap Revetments & Bank Protection	U							
	Revetments other than Riprap	U							
	Seepage	U							
<b>Legend</b> A Acceptable M Minimally Acceptable U Unacceptable N/A Not Applicable RP Rehabilitation Program (Note: flood fight assistance available regardless of eligibility status)		M U U	Includes Unacceptable observations not likely to prevent performance in next flood event Serious deficiency noted in past inspection report has not been corrected Likely prevents performance in next flood event						



**BUILDING STRONG®**



# RD 1500 and Tisdale Bypass – Sutter Basin South



<b>System: RD 1500 and Tisdale Bypass - Sutter Basin South Levee System</b> <b>System Rating: Unacceptable</b> <b>Approved SWIF / LOI: No</b> <b>PL 84-99 RP Eligibility: Inactive</b>		<div>RD 1500-Sutter Basin - Unit 1, Sacramento River (STR1)</div> <div>RD 1500-Sutter Basin - Unit 2, Sutter Bypass (STR2)</div> <div>Tisdale Bypass - Unit 2, south levee (TBP2)</div>		
General	Operations and Maintenance Manuals	A	A	A
	Emergency Supplies and Equipment	A	A	A
	Flood Preparedness and Training	M	M	M
Levee - Items Affecting PL 84-99 RP Eligibility	Encroachments	U	U	M
	Closure Structures	N/A	N/A	N/A
	Slope Stability	M	M	M
	Erosion/Bank Caving	M	M	M
	Animal Control	U	U	U
	Culverts/Discharge Pipes	N/A	N/A	N/A
	Underseepage Relief Wells/Toe Drainage Systems	N/A	N/A	N/A
Levee Embankments - Other Items	Vegetation Growth	M	M	M
	Sod Cover	M	M	M
	Settlement	A	M	M
	Depressions/Rutting	M	M	M
	Cracking	M	M	M
	Riprap Revetments & Bank Protection	M	M	M
	Revetments other than Riprap	N/A	N/A	N/A
	Seepage	M	M	M
<b>Legend</b> A Acceptable M Minimally Acceptable U Unacceptable N/A Not Applicable RP Rehabilitation Program (Note: flood fight assistance available regardless of eligibility status)		<div>M</div> <div>U</div> <div>U</div>	Includes Unacceptable observations not likely to prevent performance in next flood event Serious deficiency noted in past inspection report has not been corrected within the established timeframe Likely prevents performance in next flood event	

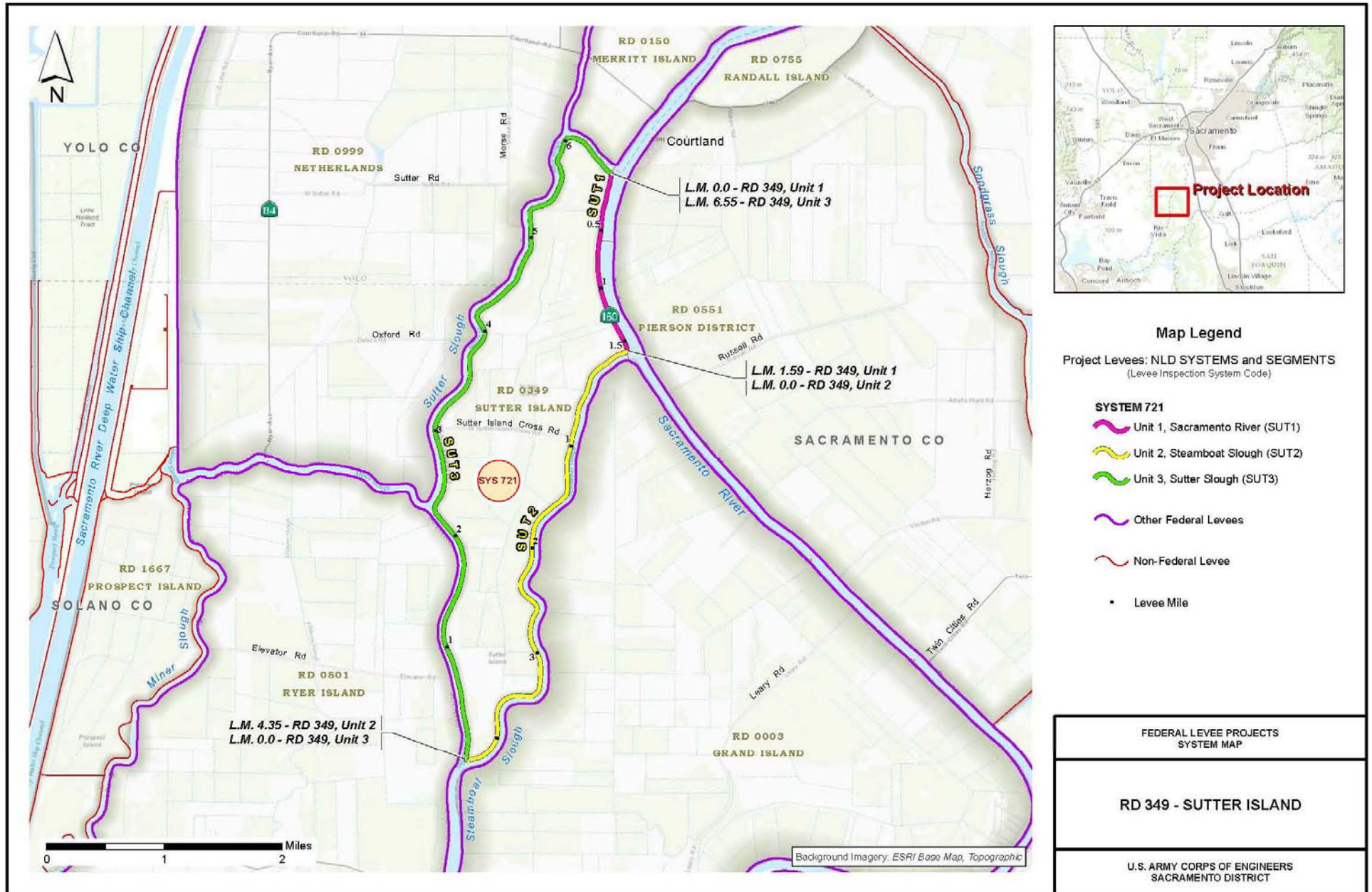
March 1, 2013



**BUILDING STRONG®**



# RD 0349 – Sutter Island



System: RD 349 - Sutter Island Levee System System Rating: Unacceptable Approved SWIF / LOI: No PL 84-99 RP Eligibility: Inactive		RD 349 - Sutter Island, Unit 1 Sacramento River (SUT1)	RD349 -Sutter Island, Unit 2 Steamboat Slough (SUT2)	RD349 -Sutter Island, Unit 3 Sutter Slough (SUT3)					
General	Operations and Maintenance Manuals	A	A	A					
	Emergency Supplies and Equipment	M	M	M					
	Flood Preparedness and Training	M	M	M					
Levee - Items Affecting PL 84-99 RP Eligibility	Encroachments	U	U	U					
	Closure Structures	N/A	N/A	N/A					
	Slope Stability	U	M	M					
	Erosion/Bank Caving	M	U	M					
	Animal Control	M	U	U					
	Culverts/Discharge Pipes	N/A	N/A	N/A					
	Underseepage Relief Wells/Toe Drainage Systems	N/A	N/A	N/A					
Levee Embankments - Other Items	Vegetation Growth	M	M	M					
	Sod Cover	M	A	M					
	Settlement	A	M	M					
	Depressions/Rutting	U	M	U					
	Cracking	A	A	A					
	Riprap Revetments & Bank Protection	M	M	M					
	Revetments other than Riprap	N/A	N/A	N/A					
	Seepage	A	M	M					

Legend

A

Acceptable

M

Minimally Acceptable

U

Unacceptable

N/A

Not Applicable

RP

Rehabilitation Program (Note: flood fight assistance available regardless of eligibility status)

M

Includes Unacceptable observations not likely to prevent performance in next flood event

U

Serious deficiency noted in past inspection report has not been corrected

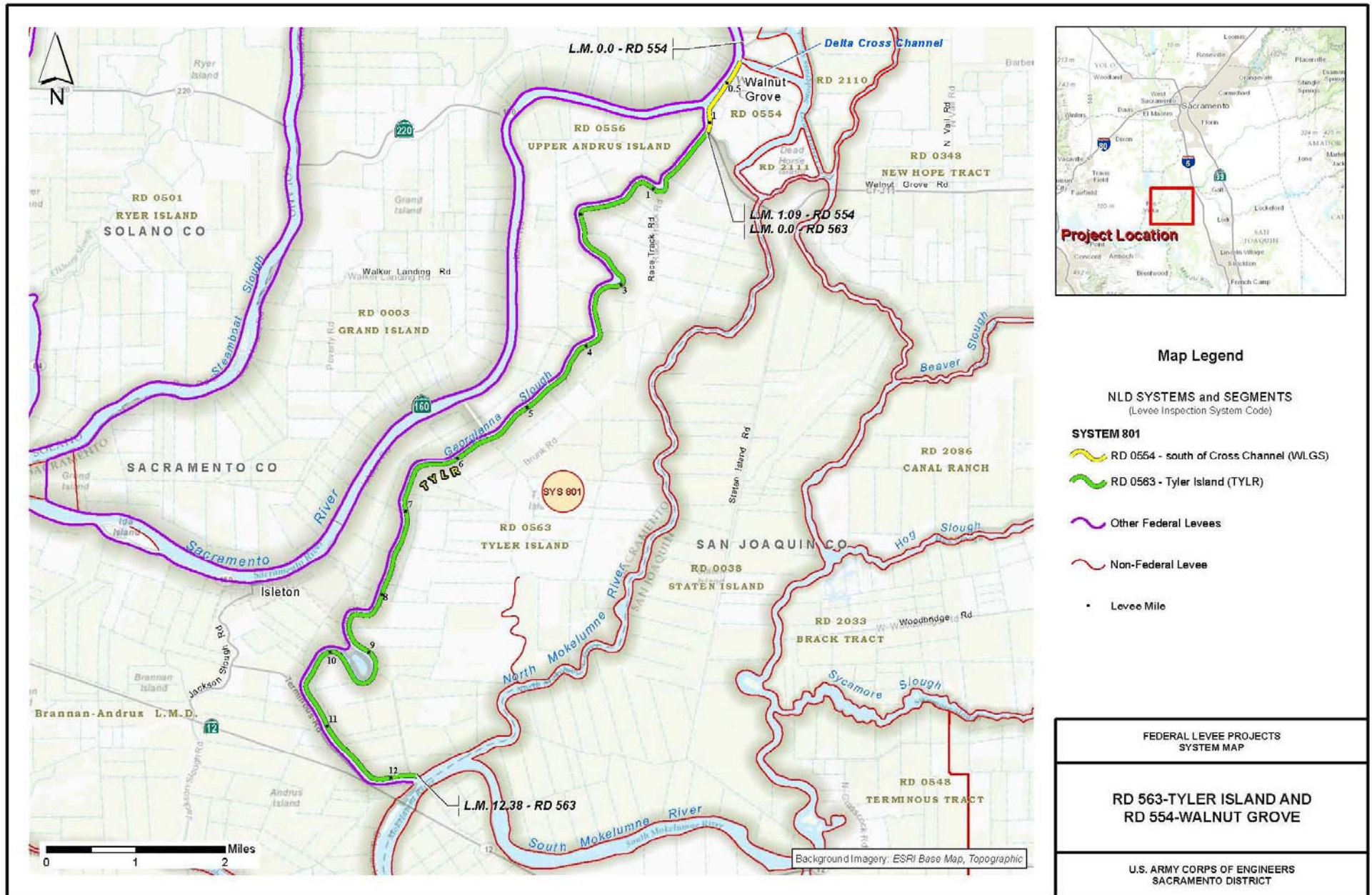
U

Likely prevents performance in next flood event





# RD 0563 and RD 0554 – Tyler Island

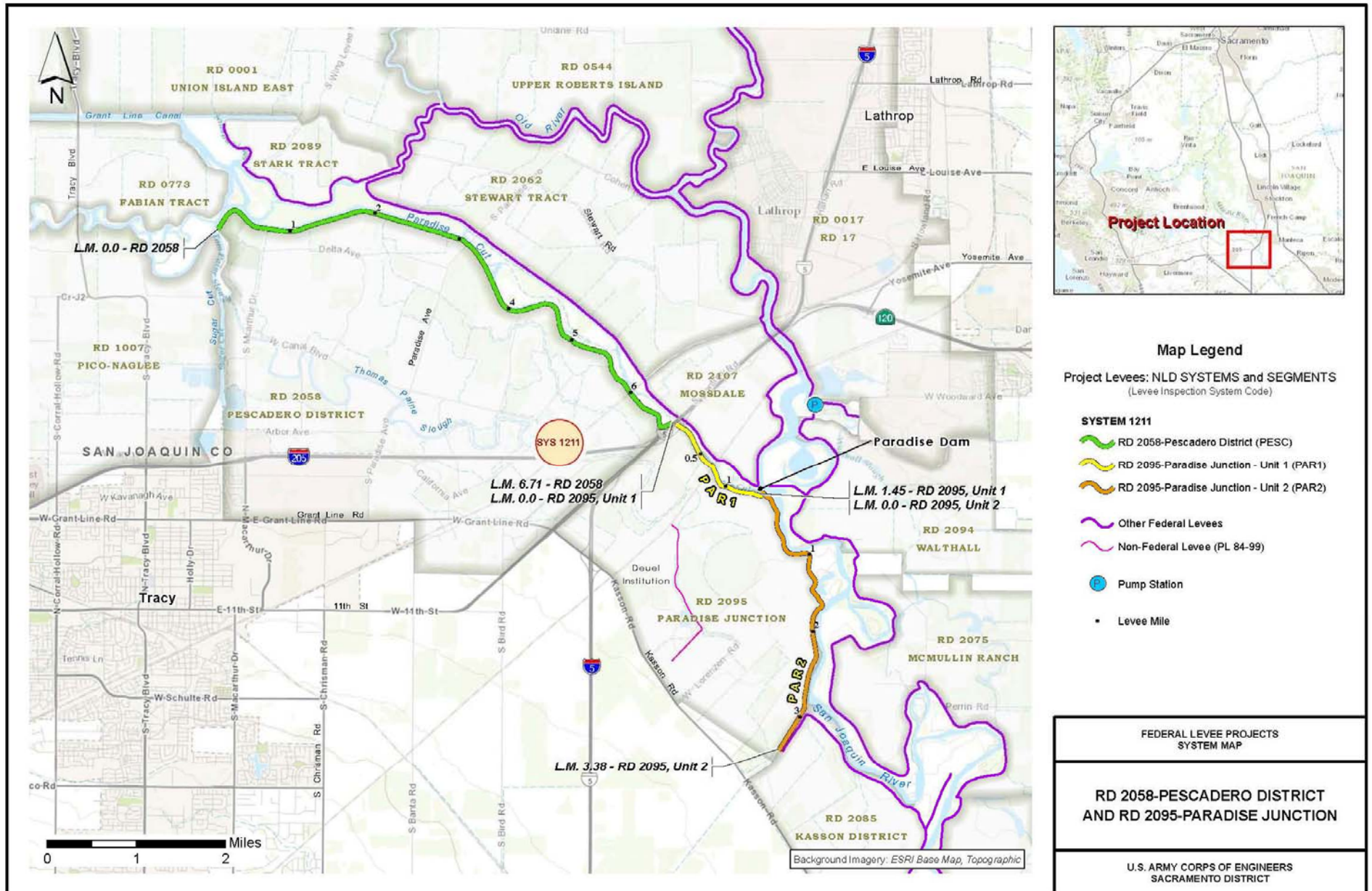








# RD 2058/2095 – Paradise Cut



	System: RD 2058 and RD 2095 - Paradise Cut Levee System System Rating: Unacceptable Approved SWIF / LOI: No PL 84-99 RP Eligibility: Inactive	RD 2058 - Pescadero (PESC)	RD 2095 - Paradise Cut - Unit 1, Paradise Cut (PAR1)	RD 2095 - Paradise Cut - Unit 2, San Joaquin River Left Bank (PAR2)					
General	Operations and Maintenance Manuals	A	A	A					
	Emergency Supplies and Equipment	M	M	M					
	Flood Preparedness and Training	M	M	M					
Levee - Items Affecting PL 84-99 RP Eligibility	Encroachments	U	U	U					
	Closure Structures	NA	NA	NA					
	Slope Stability	M	U	M					
	Erosion/Bank Caving	M	U	U					
	Animal Control	M	M	M					
	Culverts/Discharge Pipes	NA	NA	NA					
	Underseepage Relief Wells/Toe Drainage Systems	NA	NA	NA					
Levee Embankments - Other Items	Vegetation Growth	M	M	M					
	Sod Cover	M	M	M					
	Settlement	A	A	A					
	Depressions/Rutting	M	U	M					
	Cracking	A	A	A					
	Riprap Revetments & Bank Protection	M	A	M					
	Revetments other than Riprap	NA	NA	NA					
	Seepage	M	A	A					
<p><b>Legend</b></p> <p>A Acceptable</p> <p>M Minimally Acceptable</p> <p>U Unacceptable</p> <p>N/A Not Applicable</p> <p>RP Rehabilitation Program (Note: flood fight assistance available regardless of eligibility status)</p> <p>M Includes Unacceptable observations not likely to prevent performance in next flood event</p> <p>U Serious deficiency noted in past inspection report has not been corrected</p> <p>U Likely prevents performance in next flood event</p>									

®

