

# CVFPB ENFORCEMENT PROGRAM



## CVFPB ENFORCEMENT – MOVING FORWARD

**MARTIN JANOLO**

ENFORCEMENT SECTION

CENTRAL VALLEY FLOOD PROTECTION BOARD

**MARCH 28, 2014**



# MOVING FORWARD



## INVESTING RESOURCES

### Partnership

- Strengthen Old & New Alliances
- Achieve Board's Objectives
- Implement Long Term Strategies



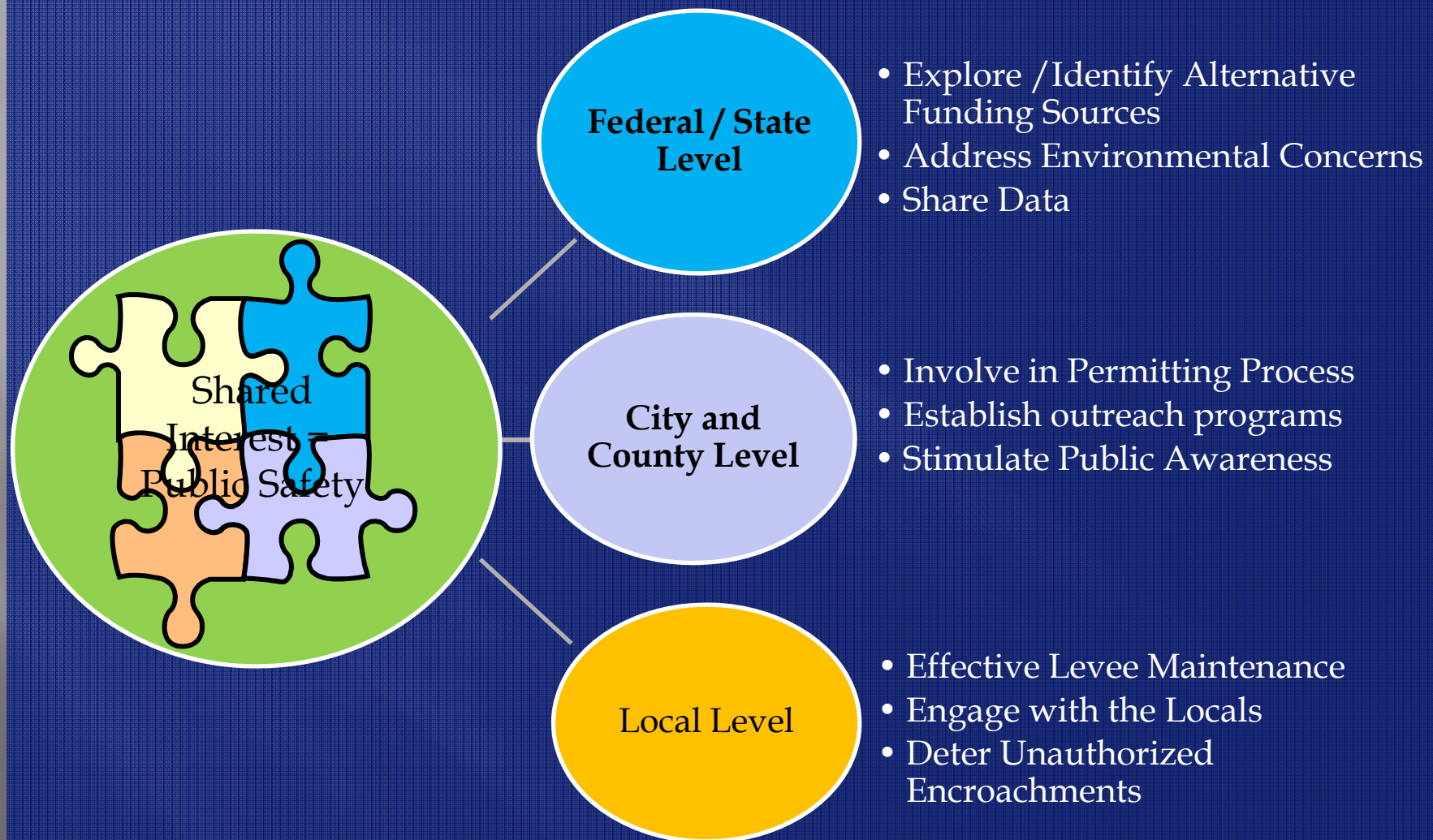
### Data Infrastructure

- Organize Information
- Develop Tools to Empower Partners
- Address Challenges





# WHY INVEST IN - PARTNERSHIP







# WHY INVEST IN - DATA INFRASTRUCTURE

- CDEC4GOV
- **Enforcement Database**
- **Electronic Reporting Web Application**

**DWR/CVFPB  
Dataset**

- **Levee EGIS**
- National Levee Database
- Periodic Inspection

**USACE  
Dataset**

- SSJDD Land Rights
- **Easement Information**

**DWR Real  
Estate  
Dataset**

- Historical Documents
- Historical Permits

**LMA Dataset**



# CA CONSERVATION EASEMENT DATABASE

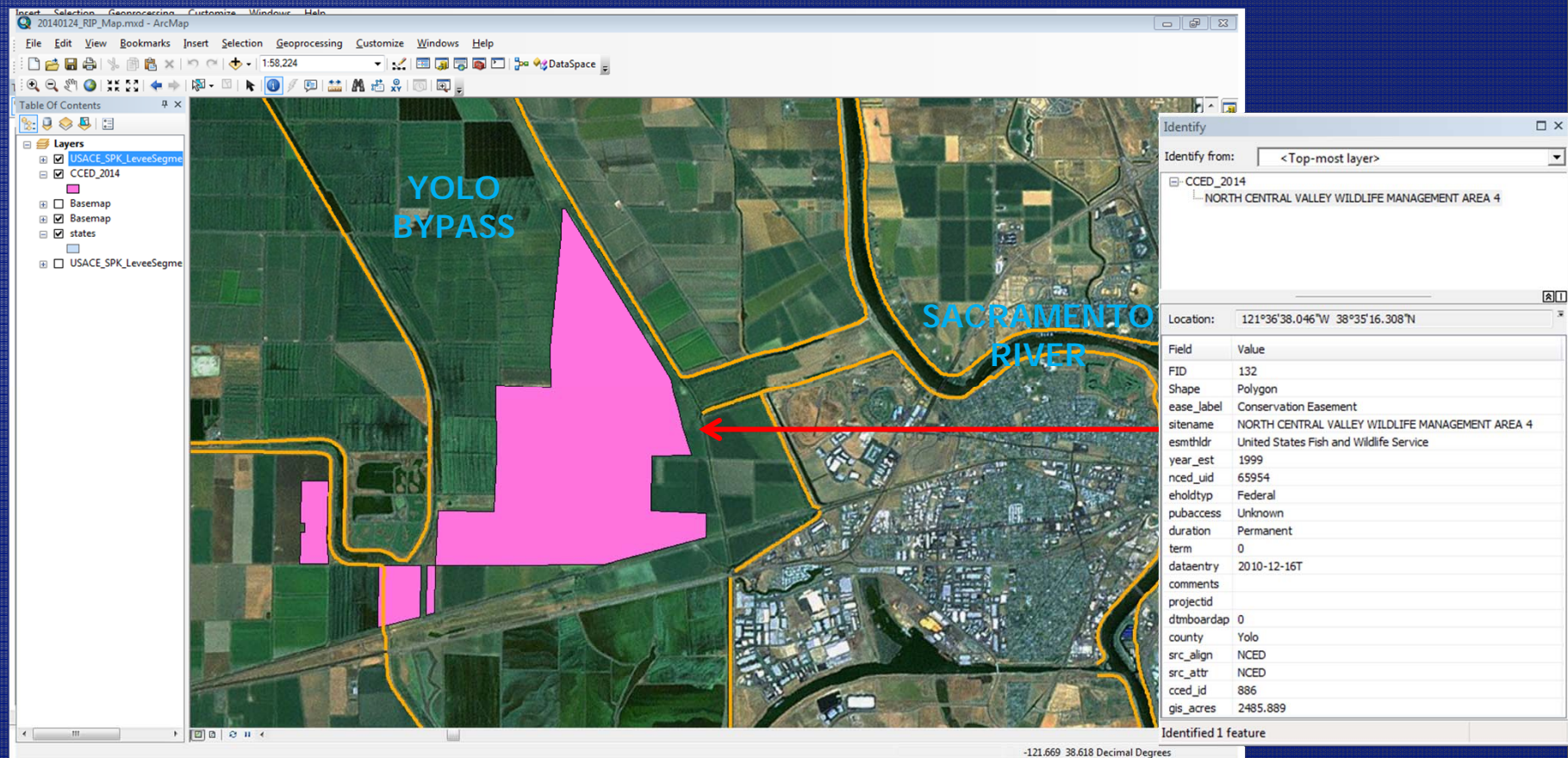


## What is CCED?

- A single source data consisting of 1.5 million “on the ground” acres of conservation easement held by 93 agencies
- Replaces the need for frequent and spontaneous inventories by multiple agencies
- Intended to encourage data sharing among the hundreds of agencies and organizations needing access to this information



# CA CONSERVATION EASEMENT DATABASE





# ENCROACHMENT





# EXPECTED GOALS



**Expand  
Participation**

**Improve  
Efficiency**

**Maintain  
Program's  
Effectiveness**

**Be  
Transparent**

**Address  
Challenges**





# ENFORCEMENT AUTHORITY DELEGATION



## Closing Statements – Michael C. Wright