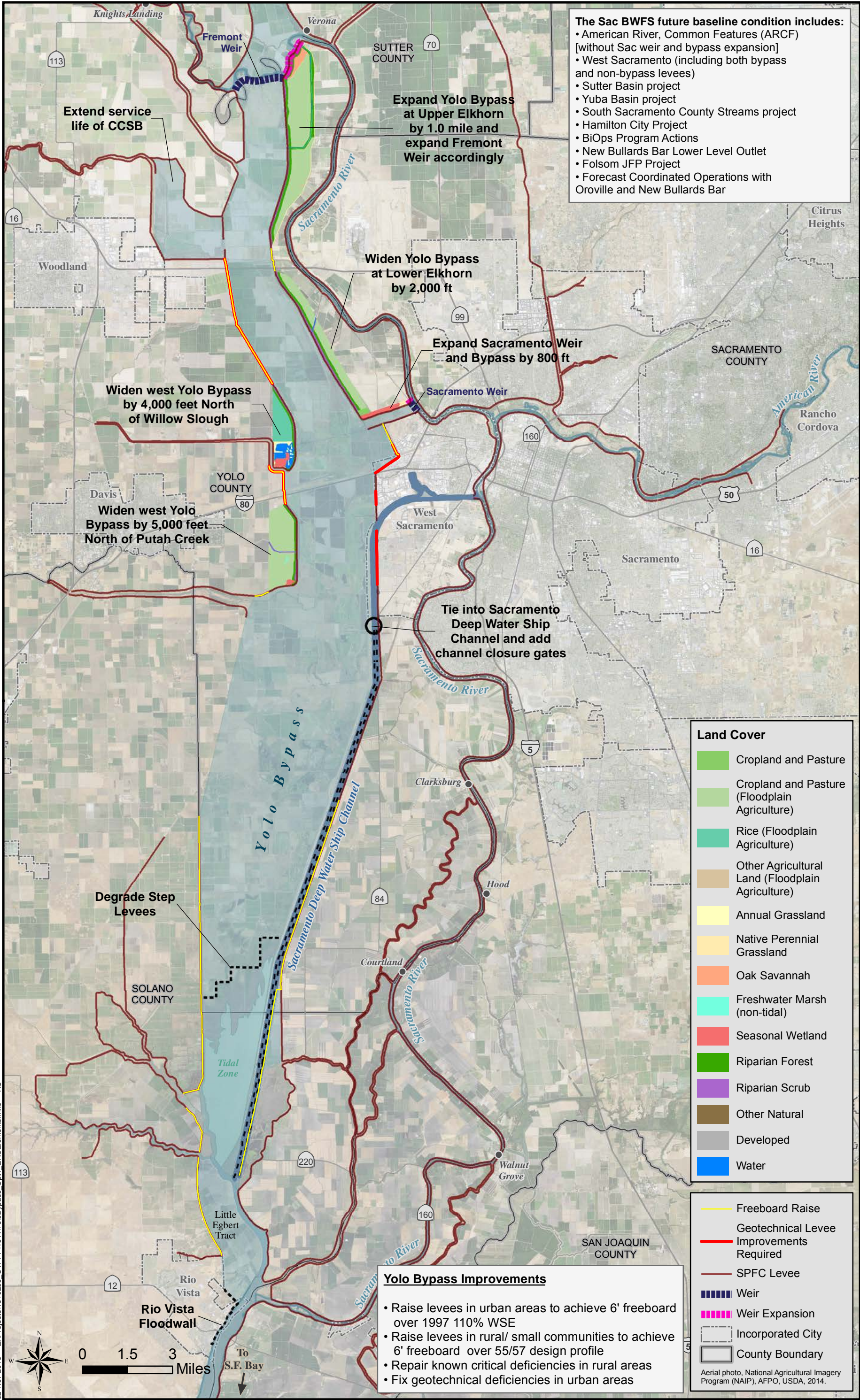
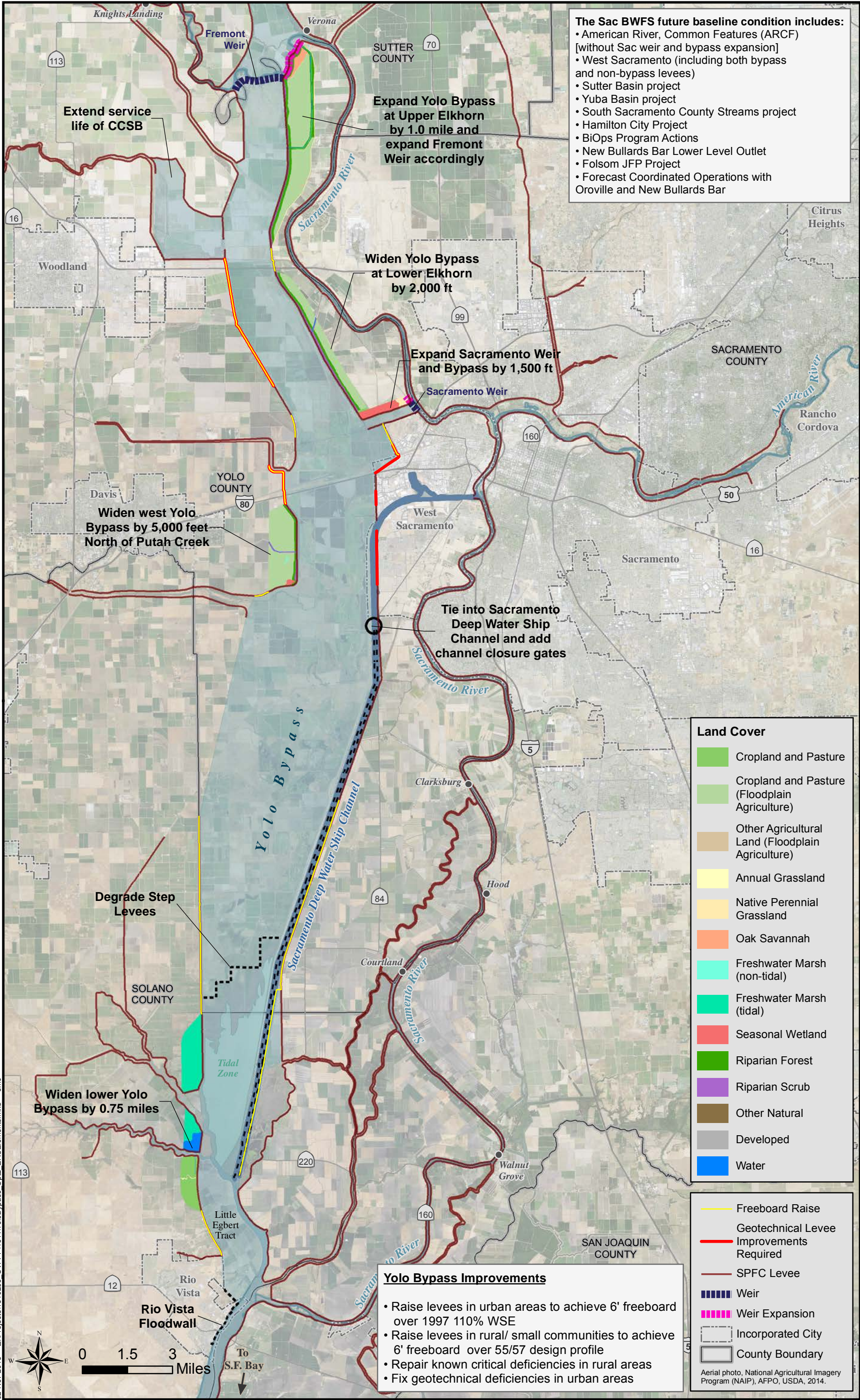


OPTION 1





OPTION 2



**The Sac BWFS future baseline condition includes:**

- American River, Common Features (ARCF) [without Sac weir and bypass expansion]
- West Sacramento (including both bypass and non-bypass levees)
- Sutter Basin project
- Yuba Basin project
- South Sacramento County Streams project
- Hamilton City Project
- BiOps Program Actions
- New Bullards Bar Lower Level Outlet
- Folsom JFP Project
- Forecast Coordinated Operations with Oroville and New Bullards Bar

**Land Cover**

- Cropland and Pasture
- Cropland and Pasture (Floodplain Agriculture)
- Other Agricultural Land (Floodplain Agriculture)
- Annual Grassland
- Native Perennial Grassland
- Oak Savannah
- Freshwater Marsh (non-tidal)
- Freshwater Marsh (tidal)
- Seasonal Wetland
- Riparian Forest
- Riparian Scrub
- Other Natural
- Developed
- Water

**Yolo Bypass Improvements**

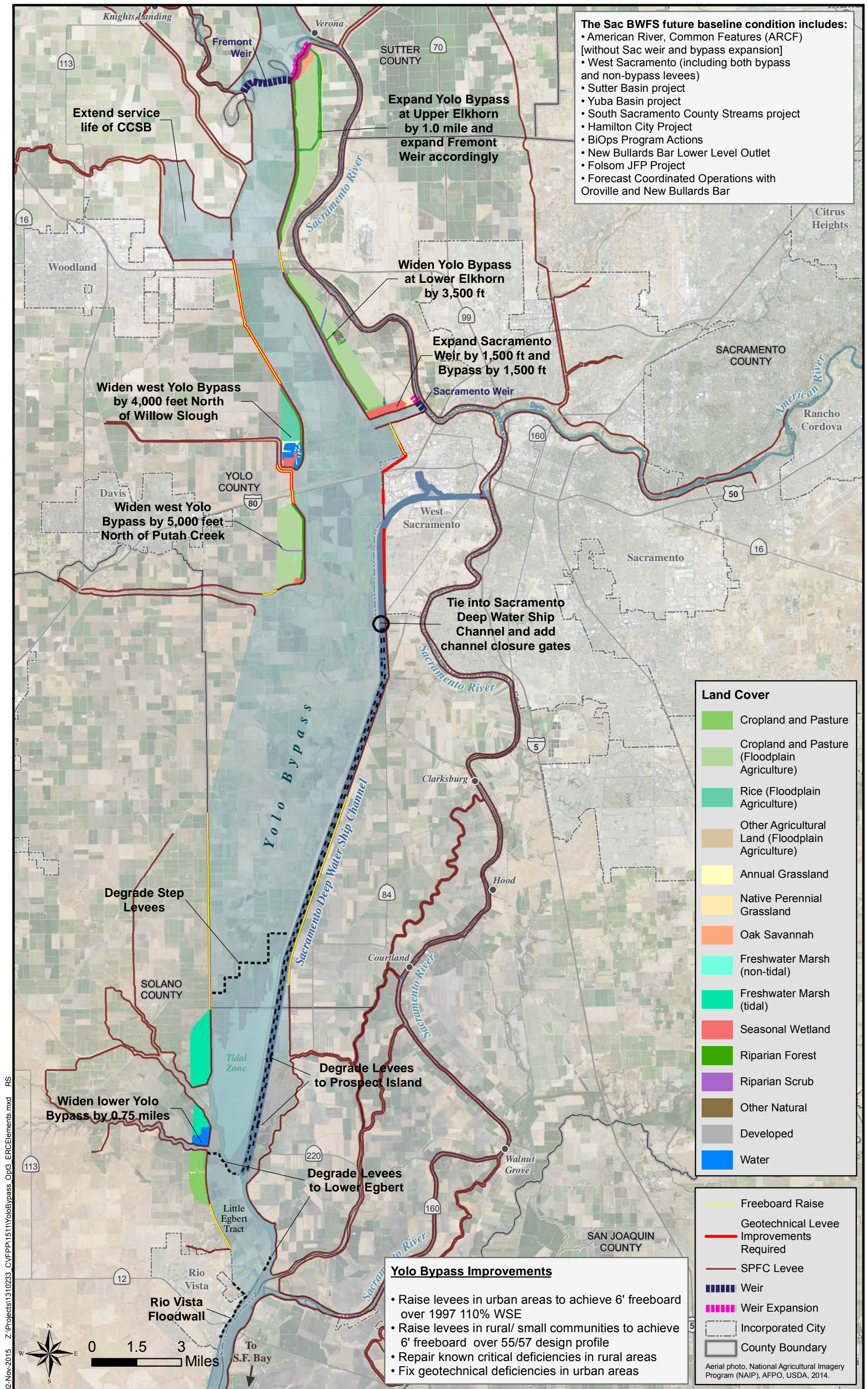
- Raise levees in urban areas to achieve 6' freeboard over 1997 110% WSE
- Raise levees in rural/ small communities to achieve 6' freeboard over 55/57 design profile
- Repair known critical deficiencies in rural areas
- Fix geotechnical deficiencies in urban areas

- Freeboard Raise
- Geotechnical Levee Improvements Required
- SPFC Levee
- Weir
- Weir Expansion
- Incorporated City
- County Boundary

Aerial photo, National Agricultural Imagery Program (NAIP), AFPO, USDA, 2014.

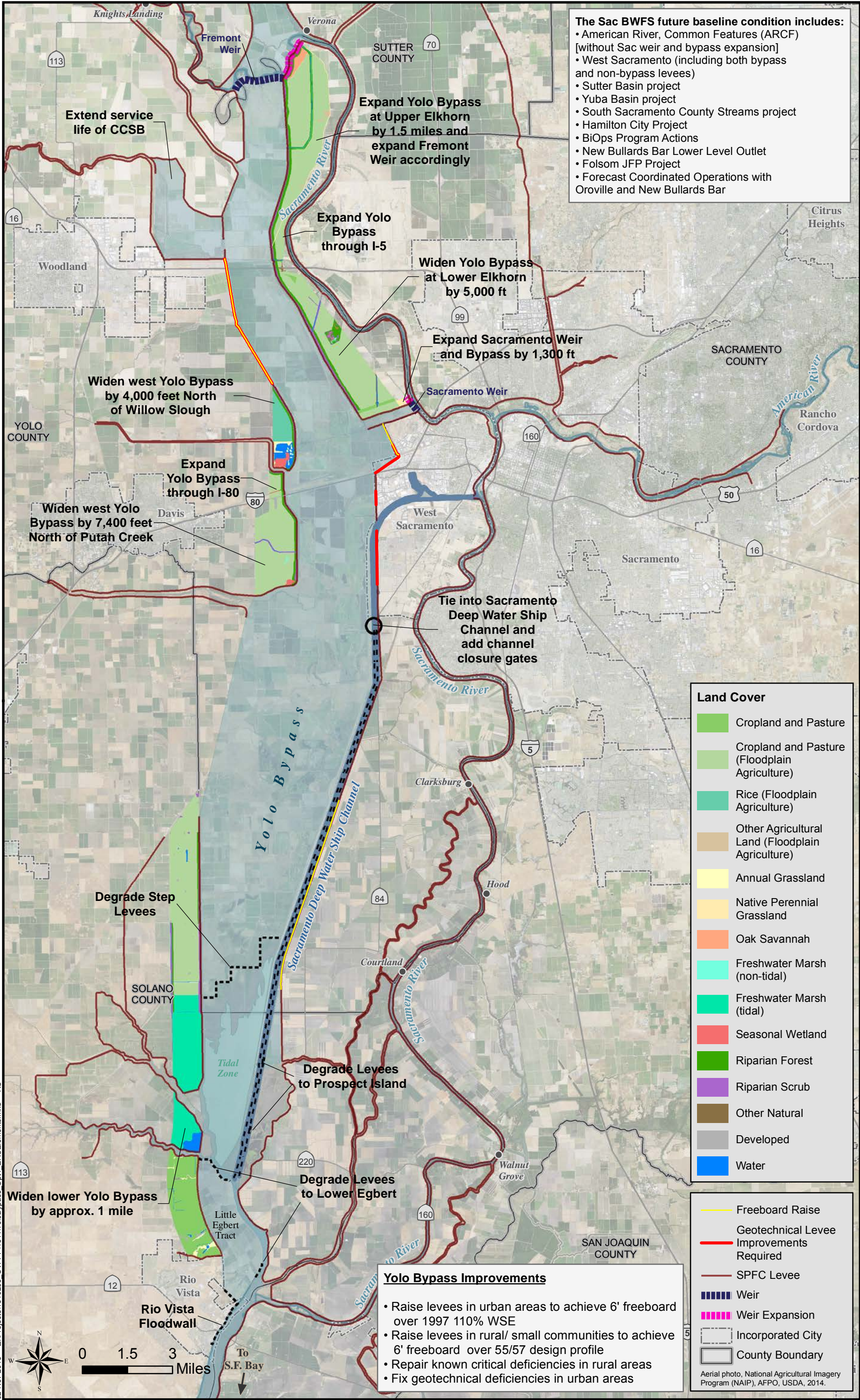


### OPTION 3





OPTION 4





OPTION 5

