

# Organizational Chart for Integrated Watershed Management

Central Valley Flood Protection Board

October 25, 2019



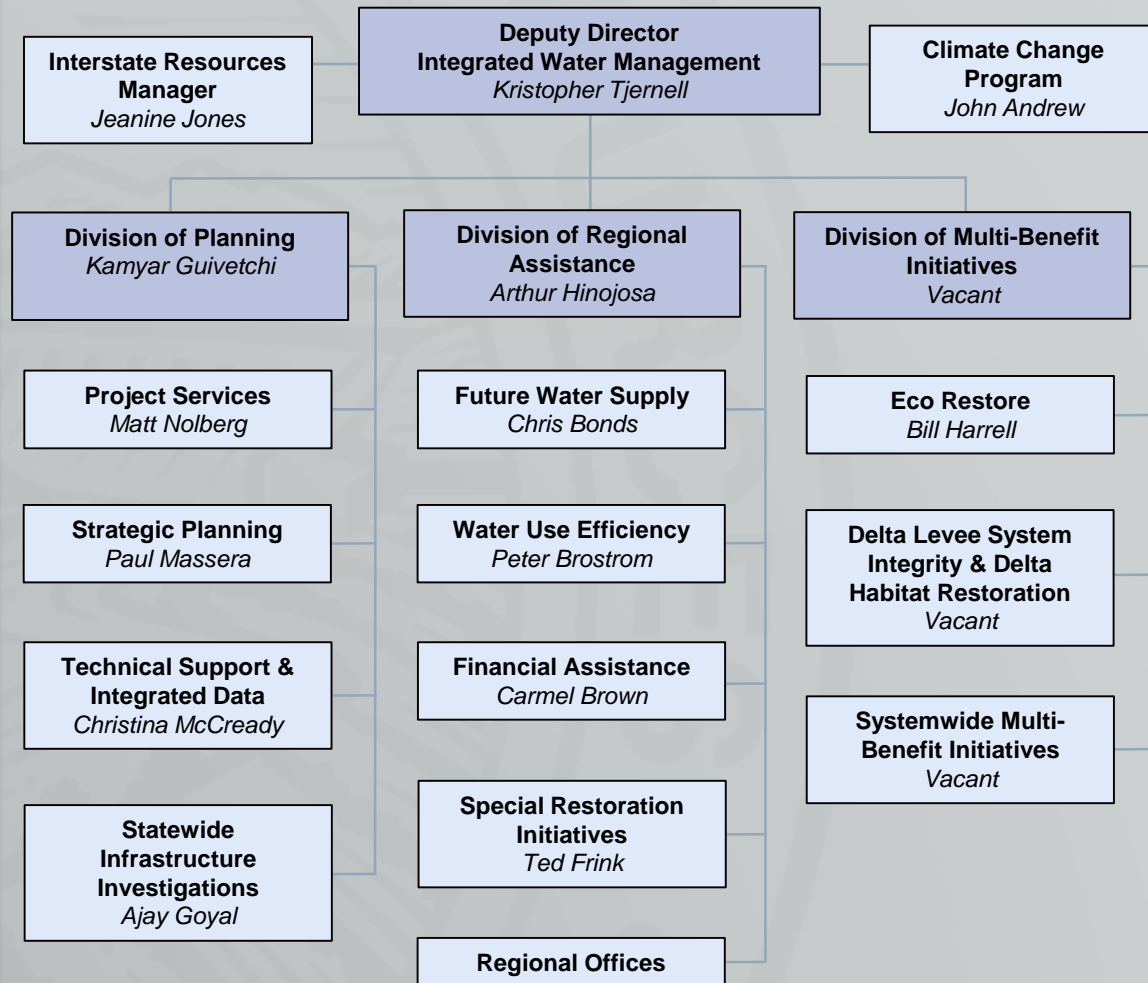
Kristopher Tjernell, Deputy Director  
Integrated Watershed Management



CALIFORNIA DEPARTMENT OF  
WATER RESOURCES

# Integrated Watershed Management

*The new Division of Multi-Benefit Initiatives puts an emphasis on multi-benefit projects. It moves the EcoRestore Office under Kris Tjernell, and it centralizes Delta programs.*



# Systemwide Multi-Benefit Initiatives

## Systemwide Multi-Benefit Initiatives *Vacant*

### Systemwide Project Management and Engineering Support

*Joe Bartlett*

Project Management

Contract Development &  
Management

Engineering and Design Support

#### Multi-Benefit Projects

Systemwide Flood Risk Reduction  
Project Implementation (e.g.  
Lower Elkhorn Basin Levee  
Setback Project, Lookout Slough  
Tidal Habitat and Flood  
Improvement Project)

Systemwide Multi-Benefit Project  
Grants

### Systemwide Environmental Support

*Vacant*

Conservation Strategy Updates

Conservation Strategy  
Implementation

Conservation Strategy Performance  
Tracking

CEQA

Tribal Consultations

Advanced Mitigation

Programmatic and Project-level  
Permitting

### Central Valley Flood Planning and Project Feasibility

*Mary Jimenez*

CVFPP Updates

CVFPP Performance Tracking

Systemwide Multi-Benefit Planning  
(e.g., Yolo Bypass)

Multi-Benefit Feasibility Studies

Statewide Flood Management  
Planning

# Delta Levee System Integrity and Delta Habitat Restoration

**Delta Levee System Integrity and Delta  
Habitat Restoration**  
*Vacant*

**Delta Levees**  
*Andrea Lobato*

Delta Levees Special Projects

Delta Levee Maintenance  
Subventions

**In-Delta Investments**  
*Vacant*

Multi-Benefit Projects  
McCormack-Williamson Tract  
Dutch Slough  
Sherman Island  
Twitchell Island

**Delta Ecosystem  
Enhancement**  
*Jennifer Hogan*

CEQA

Delta Habitat Enhancement

Long-term Habitat Management  
Program for Delta Levees  
Program

# Eco Restore

