

2017 Central Valley Flood Protection Plan Update

February 27, 2015

Presented by:

Michael Mierzwa, P.E.

Michael.Mierzwa@water.ca.gov

Lead Flood Management Planner

California Department of Water Resources



2017 ROADMAP



Today's Discussion

Where We've Been

- Draft Conservation Strategy Release & Public Workshop

Where We Are

- DWR's RFMP Content Review

Where We're Going

- Communications & Engagement Overview



Where We've Been

Draft Conservation Strategy Release & Public Workshop

2017 CVFPP Update

Chapter 1 Context	Setting Historical Context
Chapter 2 Converging	Summary of Refinements and Areas of Alignment
Chapter 3 System Management	Strategies to Improve System Management
Chapter 4 Implementation Timing	Investment Approach
Chapter 5 Measuring Value	Tracking, Reporting of Investment Actions & Results

River Basin Planning **10 Golden Rules**

1. Develop a comprehensive understanding of the entire system
2. Plan and act, even without full knowledge
3. Prioritize for current attention, and adopt a phased and iterative approach to achieve long-term goals
4. Recognize that basin-planning is iterative and often chaotic
5. Enable adaptation to changing circumstances



River Basin Planning **10 Golden Rules**



6. Develop relevant and consistent thematic plans
7. Address issues at the appropriate scale by nesting local plans under the basin plan
8. Engage stakeholders with a view to strengthening institutional relationships
9. Focus on implementation of the basin plan throughout
10. Select the planning approach and methods to suit the basin needs

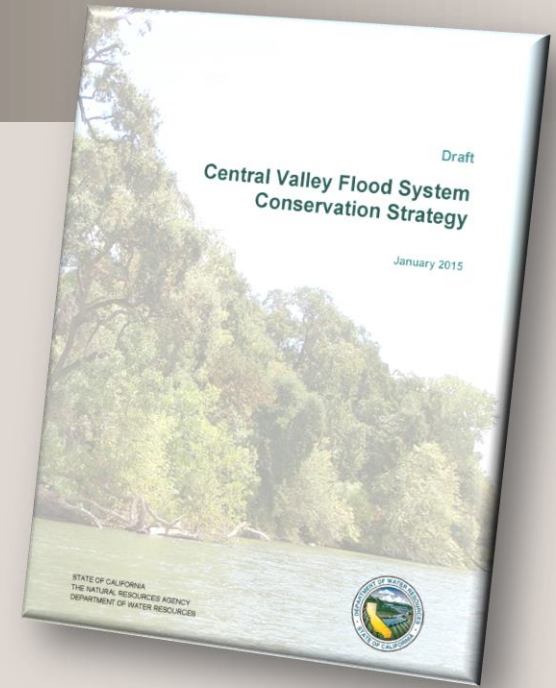
Conservation Strategy Overview

- Provides a comprehensive, long-term approach to improving riverine habitats and floodplains
- Outlines how to improve ecosystems beyond mitigation and contribute to species recovery
- Helps DWR and others plan, design and implement multi-benefit flood improvement actions
- Designed to improve project delivery, reduce long-term costs, attract other sources of funding
- Supports goals of Central Valley Flood Protection Act and Central Valley Flood Protection Plan



Public Review Schedule

- Public Release of Draft Conservation Strategy with available Appendices – January 23, 2015
- Comments received at Feb. 13 CVFPB Conservation Strategy Workshop
- Remaining Appendices to be released in March 2015
- 60-day public comment period to begin once all Appendices are released
- Executive Summary and review guidance document available:
http://www.water.ca.gov/conservationstrategy/cs_new.cfm



Providing Comments

Comments should...

- Be concise, focus specifically on the Draft Conservation Strategy
- Identify the specific part(s) of the Draft Conservation Strategy at issue
- Speak to whether the Draft Conservation Strategy achieves its intended purpose

How to Submit Comments

Via Email

info-fessro@water.ca.gov

Via Postal Mail

FESSRO

Attn: Stacy Cepello

P.O. Box 942836

Sacramento, CA 94236-0001

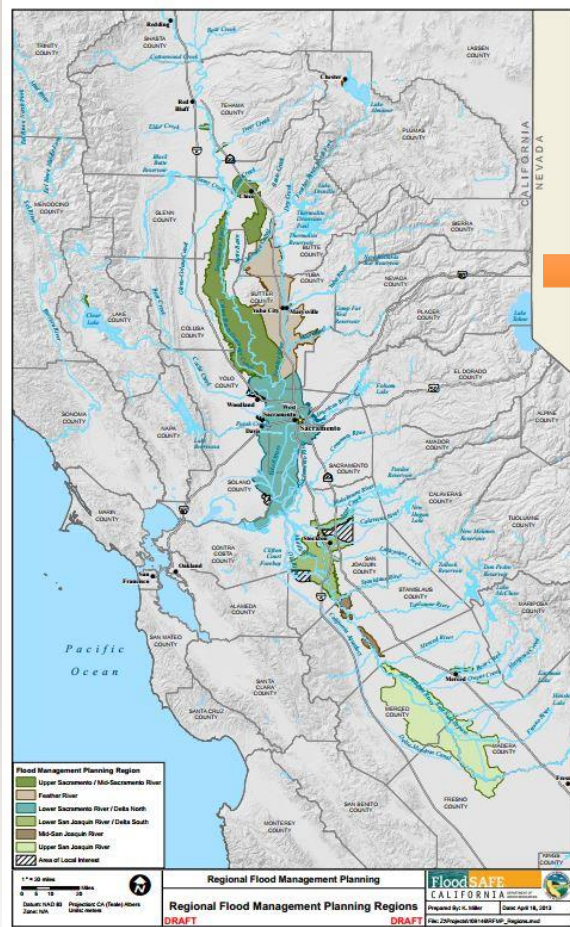
During CVFPP Workshops

Dates/Locations TBD

Where We Are

RFMP Content Review

One Process, Many Activities



CVFPP Assessment

- BWFS System Performance Analysis
- RFMP Regional Visions and Priorities
- Conservation Strategy
- O&M
- Safety & Risk
- Climate Change
- Long-term Economic Consequences of Flooding
- USACE Feasibility Studies

006

Purpose and Value of Regional Planning

Chapter
2

Converging

Chapter
3

System
Management

- Regional Planning provides greater level of detail necessary to:
 - Identify and describe potential systemwide improvements
 - Better define site-specific flood improvement needs
 - Identify regional priorities and challenges
 - Identify regional and local support needs for implementation



RFMP Content Review Activities

Chapter

2

Converging

Chapter

3

System
Management

1. **DWR/RFMP Listening Tour**
2. **Review of Regional Plans**
3. **Review of Projects Identified in Regional Plans**
4. **Continued Discussions and Dialogue – *Ongoing***

February/March 2015

DWR/RFMP Listening Tour

Chapter
2

Converging

Chapter
3

System
Management



- Series of DWR/ RFMP meetings planned
- Opportunity to:
 - Enhance DWR's understanding of regional challenges, opportunities and priorities
 - Discuss regional plans and RFMP integration into 2017 Update and future planning
 - View proposed project sites
 - See region "through RFMP eyes"
 - Continue open dialogue

Review of Regional Plans

What are we looking for?

- **Consistency**
 - Scope of Phase 1 RFMPs
 - CVFPP priorities
- **Detail About Regional Needs**
 - Proposed regional flood improvements, management actions, policy recommendations
- **Trends**
 - Commonality between regions' opportunities/challenges, priorities and management actions
- **Integration Opportunities**
 - 2017 Update and future planning
 - Identify how regional improvements add to overall system performance



Regional Plans – Initial Findings

Sacramento River Basin RFMPs

- Trends:
 - Significant agricultural land use
 - Plans have project prioritization
 - Plans focus on potential for multi-benefit projects
 - Focus on regional/statewide projects (reservoirs, bypasses)
- Main concerns:
 - Levee performance and certification
 - O&M/Permitting inconsistencies and constraints
 - Insufficient funding for repairs/improvements
 - NFIP rates

Regional Plans – Initial Findings

San Joaquin River Basin RFMPs

- Trends:
 - Significant agricultural land use
 - Population centers: Stockton, Tracy, Merced
 - Sizeable DAC presence
 - Projects are smaller, more localized in scale (levees)
 - Plans have multi-step, tiered project prioritization
- Main concerns:
 - Levee performance (subsidence, seepage and aging infrastructure) and certification
 - O&M/Permitting inconsistencies and constraints
 - Insufficient funding for repairs/improvements
 - Emergency management

Review of Projects Identified in Regional Plans

What are we looking for?

- **Project Specifics**
 - Benefits (local, inter-regional, system-wide) and timing
 - Anticipated costs and potential funding source(s)
- **Trends**
 - Commonalities between projects and regional needs
 - Opportunities for multiple-benefit projects
- **Bundling Opportunities**
 - Opportunities to strategically combine projects regionally, inter-regionally and system-wide
- **Linkage to State Priorities**



Regional Projects – Initial Findings

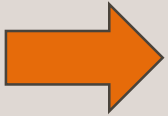
Regional Plan	Total Number of Projects	Percentage of Projects <u>without</u> Estimated Costs	Total Estimated Project Costs, in billions
Feather River	98	12%	\$2.2
Upper/Mid-Sacramento River	760	N/A	\$4.3
Lower Sacramento River and Delta North	130	24%	\$3.6
Lower San Joaquin River and Delta South	137	0%	\$3.0
Mid-San Joaquin River	37	0%	\$0.3
Upper San Joaquin River	88	13%	\$1.7
TOTAL	1,250		\$15.1

Note: Results based on preliminary reviews of the RFMPs.

Regional Projects – Initial Findings

- **Bundling Opportunities**

- Opportunities to strategically combine projects regionally, inter-regionally and system-wide



**Example: Upper San Joaquin River Regional Flood Management Plan
Multi-Benefit Project Identification – Jeremy Thomas, CH2M HILL**

USJR RFMP System Improvement Development

- Project proponents submitted system improvements
- Range from well defined to conceptual ideas
- Team worked with project proponents to refine project descriptions and define potential benefits



Conservation Strategy Integration

USJR RFMP used the Conservation Strategy to:

- Understand regional ecological needs, priorities and opportunities
- Identify and develop regional multi-benefit projects consistent with CS measurable objectives
- Qualitatively measure the relative ecological benefits associated with system improvements



Multi-Benefit Evaluation Process

- System improvements evaluated using four high-level objectives:
 - Public Safety
 - **Environmental Stewardship**
 - Economic Stability
 - Regional Issues
- Stewardship criteria derived directly from Conservation Strategy measurable objectives



Environmental Stewardship Evaluation Criteria

Environmental Stewardship System Improvement Category			
Feature/Benefit	Low=1	Medium=5	High=10
Increased Flood Inundation - Sustained Spring Flows	Increase the total area of floodplain inundation during sustained spring flows (i.e. between March 15 and May 15 and for no less than 7 days) by a net increase of less than 5% compared to existing conditions	Increase the total area of floodplain inundation during sustained spring flows (i.e. between March 15 and May 15 and for no less than 7 days) by a net increase of between 5% and 50% compared to existing conditions	Increase the total area of floodplain inundation during sustained spring flows (i.e. between March 15 and May 15 and for no less than 7 days) by a net increase of greater than 50% compared to existing conditions
Increased Flood Inundation - 2 Yr. Flows	Increase the total area of floodplain inundation during 50 percent chance flows by a net increase of less than 10% compared to existing conditions	Increase the total area of floodplain inundation during 50 percent chance flows by a net increase of between 10% and 50% compared to existing conditions	Increase the total area of floodplain inundation during 50 percent chance flows by a net increase of greater than 50% compared to existing conditions
Increased Riverine Geomorphic Process - River Meander	Increase channel migration through a net increase of less than 1 acre of river meander potential.	Increase channel migration through a net increase of between 1 and 30 acres of river meander potential.	Increase channel migration through a net increase of more than 30 acres of river meander potential
Increased Riverine Geomorphic Process - Natural Bank	Increase the length of natural bank by a net increase of less than 10% compared to existing conditions	Increase the length of natural bank by a net increase of between 10% and 50% compared to existing conditions	Increase the length of natural bank by a net increase of greater than 50% compared to existing conditions
Extension and Continuity of SRA Coverage	Increase the extent of SRA cover by a net increase of less than 10% compared to existing conditions	Increase the extent of SRA cover by a net increase of between 10% and 50% compared to existing conditions	Increase the extent of SRA cover by a net increase of greater than 50% compared to existing conditions
Riparian Habitat Coverage	Increase the quantity of native riparian vegetation by less than 10% compared to existing conditions	Increase the quantity of native riparian vegetation by a net increase of between 10% and 50% compared to existing conditions	Increase the quantity of native riparian vegetation by a net increase of greater than 50% compared to existing conditions
Riparian Habitat Connectivity	Median riparian vegetation patch size increases by less than 10% compared to existing conditions	Median riparian vegetation patch size increases by a net increase of between 10% and 50% compared to existing conditions	Median riparian vegetation patch size increases by a net increase of greater than 50% compared to existing conditions
Marsh Habitat Coverage	Increase the quantity of native marsh / wetland vegetation by less than 10% compared to existing conditions	Increase the quantity of native marsh / wetland vegetation by a net increase of between 10% and 50% compared to existing conditions	Increase the quantity of native marsh / wetland vegetation by a net increase of greater than 50% compared to existing conditions

EXAMPLE

Multi-Benefit Evaluation Process

- Where projects scored well across more than one category, indicates potential for achieving multiple benefits
- Where projects **did not** score well across more than one category, indicates potential for combining with other projects or redefining / expanding project to include more benefits
- Allows preliminary understanding of how to 'mix and match', modify or group projects to respond to funding opportunities

USJR RFMP Multi-Benefit Opportunities

- Washington Ave / Redtop Subsidence Solution
- City of Firebaugh
- Great Valley Grasslands State Park
- USFWS transitory storage projects
- Fins & Feathers Forever (FX) off-channel seasonal wetlands pilot projects
 - Three Rivers Ranch
 - Cinnamon Slough
 - Sunrise Ranch
- San Joaquin River Restoration Program



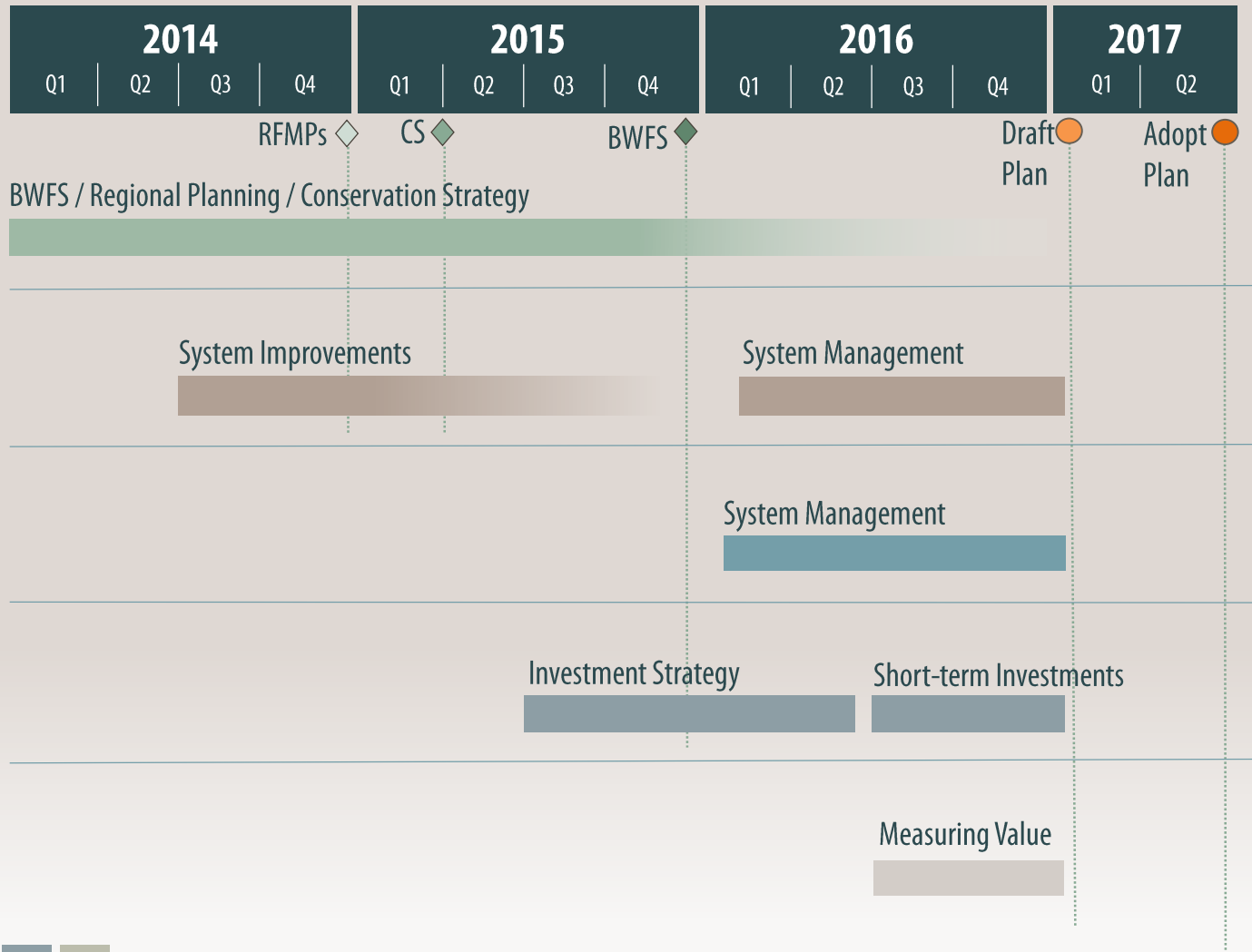
Where We're Going

Communications & Engagement Overview

Balanced Communications & Engagement Approach

- Successful engagement includes mixture of formal, informal and general public outreach
- Approach must be flexible and adaptive to address evolving stakeholder needs
- Approach intended to:
 - Demonstrate the State's commitment to transparency
 - Encourage dynamic dialogue and detailed discussions
 - Identify opportunities for cross-coordination
 - Generate interest in key plan recommendations

CVFPP Progression (as of February 2015)



Proposed Future CVFPP Updates

Regular CVFPB, Coordinating Committee and public updates planned:

Venue	Date	Proposed Topic
Coordinating Committee Meeting	March 25, 2015	Long-Term O&M Workgroup results
CVFPB Meeting	March 27, 2015	CVFPP Update – C&E Overview

2017 Central Valley Flood Protection Plan Update

February 27, 2015

Presented by:

Michael Mierzwa, P.E.

Michael.Mierzwa@water.ca.gov

Lead Flood Management Planner

California Department of Water Resources



2017 ROADMAP

