

**Meeting of the Central Valley Flood Protection Board
January 23, 2013**

Staff Report

**Sacramento Area Flood Control Agency,
Sacramento River East Levee, American River to Freeport Improvement Project
Request to Initiate Project Review Pursuant to Title 33, USC Section 408**

1.0 – ITEM

Consider Central Valley Flood Protection Board (Board) approval of a letter to the U. S. Army Corps of Engineers (USACE) pursuant to federal Title 33, USC Section 408 requesting initiation of, in cooperation with Sacramento Area Flood Control Agency and other federal agencies, a joint review of possible improvements to levees along the Sacramento River east levee (Attachment A).

2.0 – PROJECT PROPONENT

Sacramento Area Flood Control Agency (SAFCA)

3.0 – PROJECT LOCATION

The American River to Freeport Improvement project begins at R Street and extends southerly (downstream) to the East Bay Municipal Utility District Freeport intake facility in Freeport along the Sacramento River east levee (SREL) in Sacramento County (Attachment B).

4.0 –PROJECT DESCRIPTION

SAFCA is proposing to alter approximately eight (8) miles of the SREL. Alterations to facilities of the State Plan of Flood Control and the federal flood control project could include construction of landside berms and drains, installation of cutoff walls, installation of relief wells and associated drainage infrastructure, installation of rock slope protection and bioengineered features, and removal of vegetation and encroachments. The project has been divided into 27 reaches within four (4) levee segments. The deficiencies and possible remediation measures for each segment are shown in the following table:

SREL SEGMENT	APPROXIMATE SEGMENT LENGTH (feet)	DEFICIENCY	REMEDATION MEASURES BEING CONSIDERED
A	9,100	Underseepage	Cutoff wall; Relief wells; Seepage berm or fill
B	6,800	Underseepage and Erosion	Landside fill
C	17,450	Underseepage and Erosion	Cutoff wall; Landside fill, Relief wells; Stability berm; Seepage berm; Rock; Bioengineered features
D	9,300	Through-seepage and Erosion	Cutoff wall; Seepage berm; Rock; Bioengineered features
Total Length	42,650 (8.08 miles)		

5.0 – STAFF RECOMMENDATIONS

Staff recommends the Board:

- **Approve** the draft letter to the USACE (Attachment A); and
- **direct** the Executive Officer to sign and send the letter to the USACE.

6.0 – LIST OF ATTACHMENTS

A. Draft Letter to the USACE

B. Project Location Map

Technical Review:	Deb Biswas, PE, Engineer, WR, Planning Branch
Document Review:	Nancy Moricz, PE, Senior Engineer, Planning Branch
	Eric Butler, PE, Supervising Engineer, Planning Branch
	Len Marino, PE, Chief Engineer
	Nicole Rinke, Board Counsel
	Leslie Gallagher, Acting Executive Officer

CENTRAL VALLEY FLOOD PROTECTION BOARD

3310 El Camino Ave., Rm. 151
SACRAMENTO, CA 95821
(916) 574-0609 FAX: (916) 574-0682
PERMITS: (916) 574-0685 FAX: (916) 574-0682



January 23, 2015

Colonel Michael J. Farrell, District Commander
U.S. Army Corps of Engineers
Sacramento District
1325 J Street
Sacramento, California 95814

Subject: Written Request to Initiate Project Review pursuant to Title 33, USC Section 408 for the Sacramento Area Flood Control Agency's Sacramento River East Levee, American River to Freeport Improvement Project

Dear Colonel Farrell:

Pursuant to Title 33, USC Section 408 (Section 408) as described by the U. S. Army Corps of Engineers (USACE) Engineering Circular 1165-2-216, §7c(2), the Sacramento Area Flood Control Agency (SAFCA) has requested the Central Valley Flood Protection Board (Board) staff to initiate the Section 408 process for the joint review of possible alterations to approximately eight (8) miles of the Sacramento River east levee (SREL) from the confluence of the American River south (downstream) to Freeport. The purpose of this project is to reduce flood risk by providing protection up to the 200-year flood event. The enclosed documentation describes the project location along with proposed alterations.

Proposed alterations may include construction of landside berms and drains, installation of cutoff walls, installation of relief wells and associated drainage infrastructure, installation of rock slope protection and bioengineered features, and removal of vegetation and encroachments. The proposed alterations are also being considered by the USACE as part of the American River Common Features Project. The Board, on behalf of the State of California, anticipates seeking credit for the proposed under Section 221 of the Flood Control Act of 1970. Approval under Section 404 of the Clean Water Act is also anticipated to be required for these proposed alterations. The proposed project will require lands owned by the non-Federal sponsor, and will not require any lands owned by the USACE.

On behalf of SAFCA, the Board requests the USACE, in cooperation with SAFCA and other federal agencies, to initiate a joint review of possible alterations for the American River to Freeport Improvement project. The Board, on behalf of SAFCA, will seek approval from the USACE to make necessary alterations to the levee system to achieve the project purpose.

Thank you for your attention to this request. We look forward to working with you, your staff, and the SAFCA staff on this project. If you have any questions regarding this request, please contact Ms. Nancy Moricz of my staff at (916) 574-2381 or by email at nancy.moricz@water.ca.gov.

Sincerely,

Leslie Gallagher, Acting Executive Officer

Enclosure: 33 USC § 408 Request from SAFCA dated October 31, 2014

cc: Mr. Rick Johnson, Executive Director
Sacramento Area Flood Control Agency

Ms. Claire Marie Turner, MBK Engineers



October 31, 2014

Ms. Leslie Gallagher, Acting Executive Officer
Central Valley Flood Control Board
3310 El Camino Avenue, Room 151
Sacramento, California

**Subject: 33 USC § 408 Written Request for the Sacramento River East Levee from
American River to Freeport Improvements Project**

Dear Ms. Gallagher,

The Sacramento Area Flood Control Agency (SAFCA) is seeking permission from the U.S. Army Corps of Engineers (USACE) pursuant to 33 USC § 408 (Section 408) for alteration of the Sacramento River Flood Control Project. We request your assistance in pursuing this permission by reviewing the enclosed documents and forwarding our request to the USACE Sacramento District.

SAFCA is proposing to alter up to 8 miles of the Sacramento River East Levee. Alterations could include construction of landside berms and drains, installation of cutoff walls, installation of relief wells and associated drainage infrastructure, installation of rock slope protection and bioengineered features, and removal of vegetation and encroachments. Enclosures 1 and 2 provide a more detailed description of the location and potential alterations. Approval under Section 404 of the Clean Water Act is anticipated to be required for the proposed alterations.

The proposed alterations are also being considered by the USACE as part of the American River Watershed Common Feature project. Therefore, SAFCA intends to seek credit under Section 221 of the Flood Control Action of 1970. Because we are seeking credit for the proposed alteration, we anticipate USACE Headquarters approval of these alterations.

The proposed project will require the use of lands owned by the non-Federal sponsor. It will not require use of lands owned by the USACE.

The work along the Sacramento River East Levee may be included as part of a future System-Wide Improvement Framework for the *MA 09 – City of Sacramento - American R left bank*, National Levee Database Number 5205000441. A System-Wide Improvement Framework Letter of Intent for this system was approved by USACE on May 14, 2014.

Office 916-874-7606
Fax 916-874-8289

1007 - 7th Street, 7th Floor
Sacramento CA 95814-3407

33 USC 408 Written Request – Sacramento River East Levee
Page 2

Questions regarding this request can be made to Mr. Pete Ghelfi at 916-874-8733 or ghelfip@saccounty.net.

Sincerely,



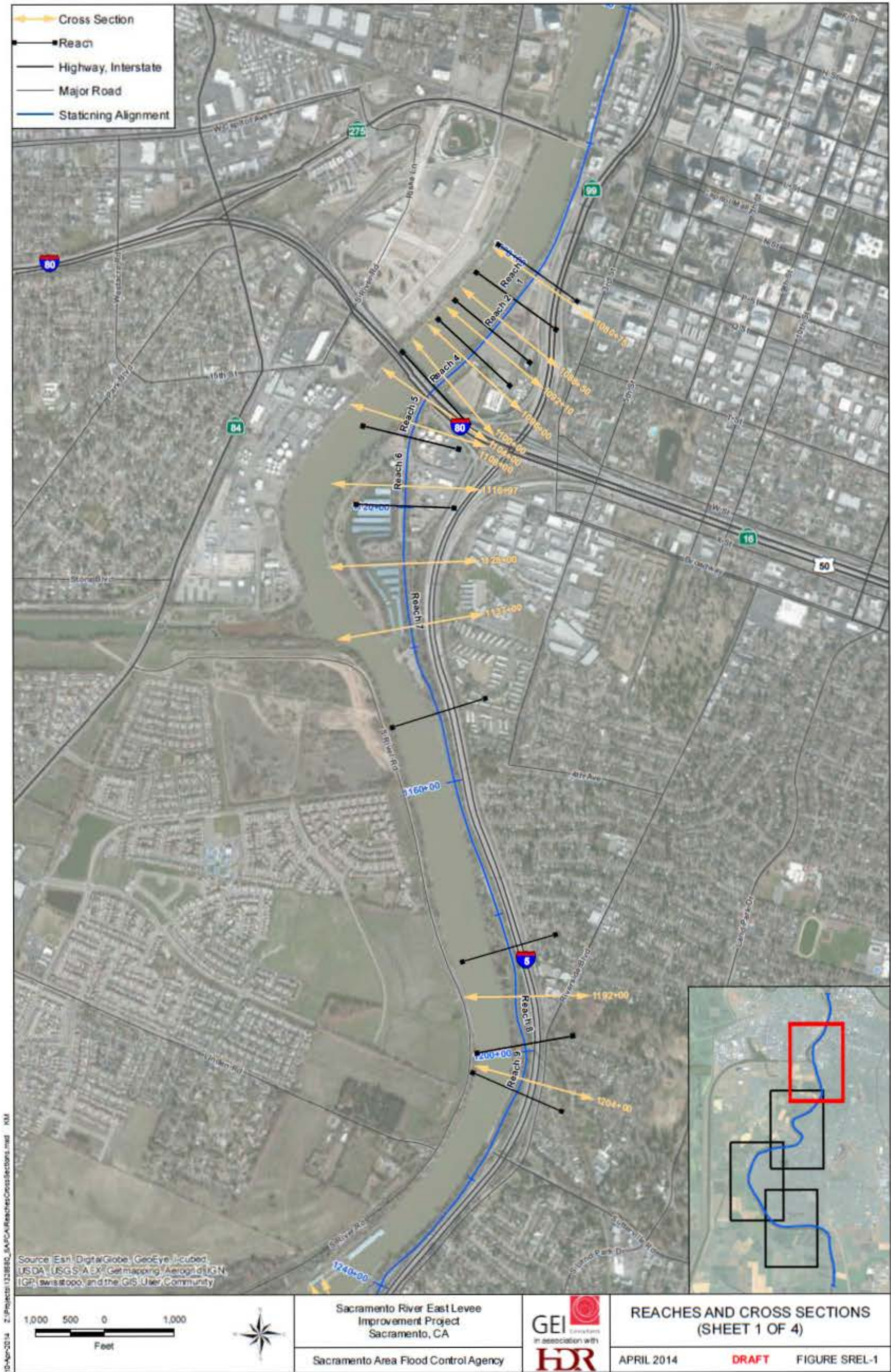
Rick Johnson
Executive Director
Sacramento Area Flood Control Agency

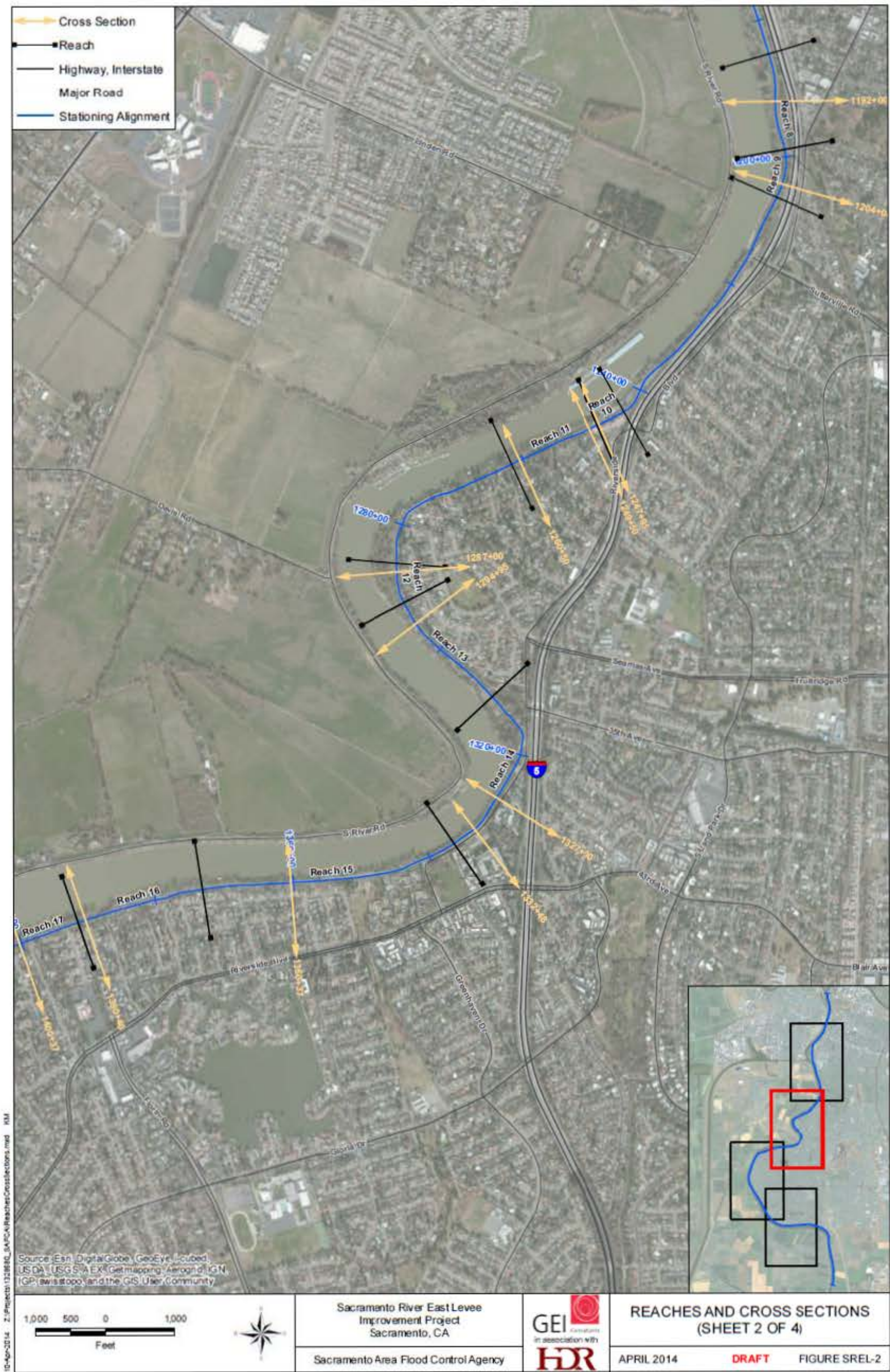
Enclosure 1 – Figures

Enclosure 2 – Preliminary Project Description

CC:

Mr. Tim Kerr, General Manager, American River Flood Control District
Mr. Jon Ericson, Chief, Flood Maintenance Office, Department of Water Resources
Ms. Kelly Fucciolo, Chief, Urban Flood Programs, Department of Water Resources









ENCLOSURE 2

Preliminary Project Description

The Sacramento River East Levee (SREL) project reach begins at R Street and extends southerly, downstream, to the East Bay Municipal Utility District Freeport intake facility in Freeport. The total length is approximately 10 miles. The levee has been divided into four segments and 27 reaches:

Segment A – North of Sutterville Road, Reaches 1 through 9

Segment B – Little Pocket Area, Reaches 10 through 14

Segment C – North Pocket Area, Reaches 15 through 21

Segment D – South Pocket Area, Reaches 22 through 27

Deficiencies and Remediation Measures

The below table presents the deficiencies and potential remediation measures for each of the segments:

Table 2: Summary of Remediation Measures by Sacramento River East Levee Reach

SREL SEGMENT	APPROXIMATE REACH LENGTH (feet)	DEFICIENCY	REMEDATION MEASURES BEING CONSIDERED
A	9,100	Underseepage	Cutoff wall; Relief wells; Landside berm or fill
B	6,800	Underseepage Erosion	Landside Fill
C	17,450	Underseepage Erosion	Cutoff wall; Landside fill, Relief wells; Stability berm; Seepage berm; Rock; Bioengineered features
D	9,300	Through-seepage Erosion	Cutoff wall; Seepage berm; Rock; Bioengineered features
TOTAL	42,650 (8.08 miles)		

