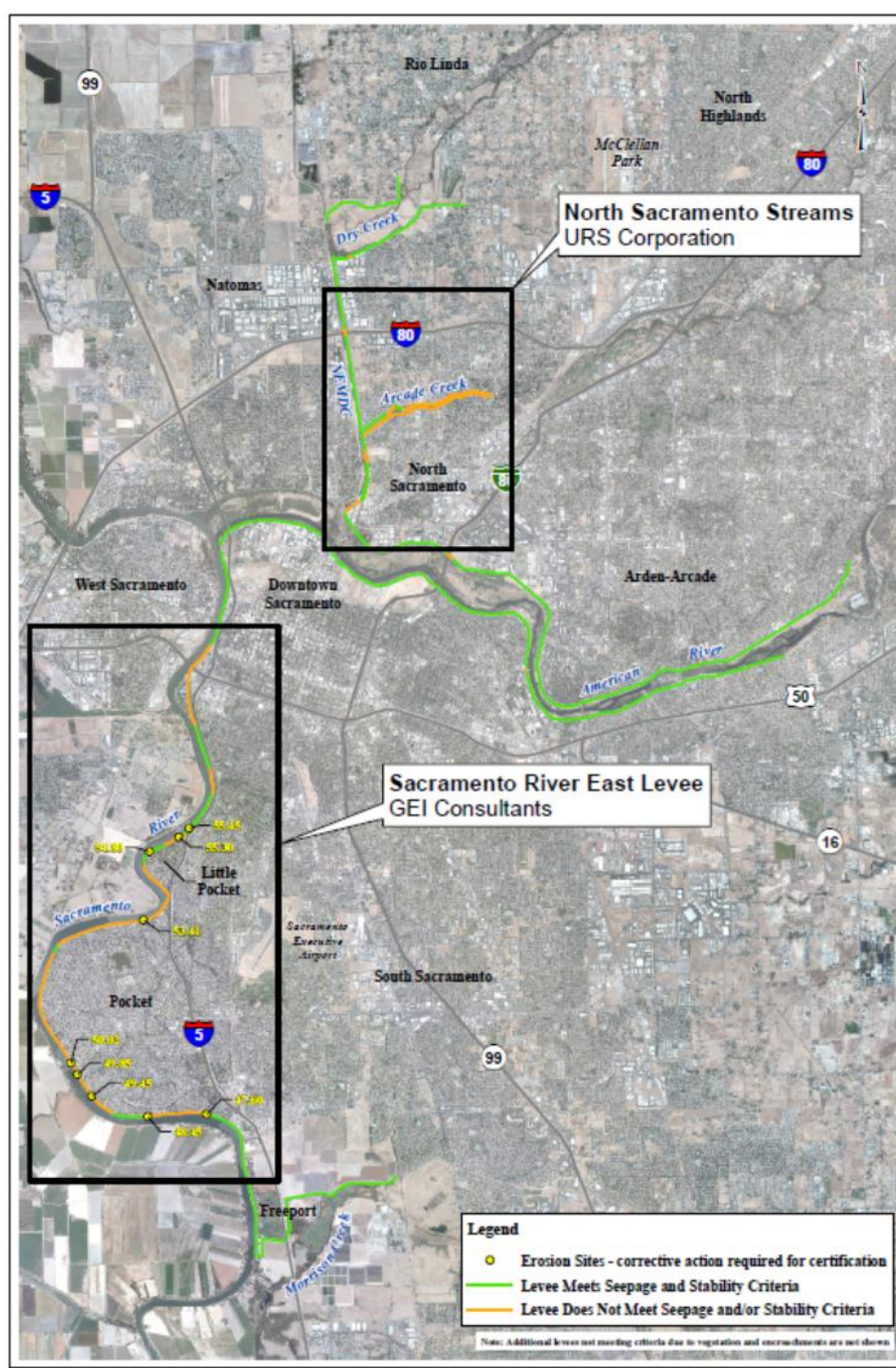


Levee Accreditation Program

- 58 miles to accredit for FEMA
- Up to 10 miles need remediation to meet FEMA and State Standards
- Address high hazard encroachments/vegetation



Why the need for the Levee Accreditation Program

- FEMA/NFIP status of the levees
- SB5 – Urban Level of Protection (have a plan in place by July 2016, completed by 2025)
- Implement Risk Reduction Measures quickly

Elements of Robust Flood Protection Program

1 LEEVE ACCREDITATION

100-year level of flood protection

- Construct 6 miles of levee improvements along the Lower Sacramento River
- Construct 4 miles of levee improvements along the North Sacramento Streams
- Construct 3,000 of bank protection along the Sacramento River
- Remove high-hazard vegetation and encroachments
- Complete Folsom Dam Joint Federal Project
- Complete Folsom Dam Water Control Manual

Requirements under State of California Urban Levee Design Criteria

- Complete Folsom Dam Raise
- Develop plan for levee access, vegetation and encroachment removal

2 SYSTEM RESILIENCY

Requirements to go beyond the Levee Accreditation elements

- Levee bank and channel armoring along the Lower American and Sacramento Rivers
- Sacramento Weir and Bypass widening
- Fremont Weir & Yolo Bypass widening

3 LEEVE MODERNIZATION

Requirements under State of California Urban Levee Design Criteria

- Lower hazard vegetation and encroachment removal
- Land side levee toe access and visibility

Shared Elements
(SAFCA to Implement Ahead of USACE)

SACRAMENTO RIVER LEVEE IMPROVEMENTS

*9 miles of levee seepage and stabilization
4.5 miles of slope flattening
1 mile of levee raising
10 miles of bank protection*



*6 miles of levee seepage and stabilization
3,000 feet of bank protection*

NORTH SACRAMENTO STREAMS LEVEE IMPROVEMENTS

*4 miles of levee seepage and stabilization
7.5 miles of levee raising*



4 miles of seepage and stabilization

VEGETATION AND ENCROACHMENT REMOVAL

*Vegetation and encroachments located
within project footprint will be removed
through construction*



*Removal of high-hazard vegetation and
encroachments in and out of the construction
footprint*

Independent Elements
(To Be Implemented by Respective Agency)

SYSTEM RESILIENCY

- Widen the Sacramento Weir and Bypass by 1,500 feet to reduce water surface elevation in Sacramento River*
- 21 miles of levee bank and channel armoring along Lower American River and Sacramento River*

LEVEE MODERNIZATION

- Develop long term plan to remove lower-hazard encroachments and provide levee access and visibility as required under State of California Urban Levee Design Criteria*

Outreach Activity Relating to the EIR

It is important that the community be kept informed about the Environmental Impact Report (EIR) process. Public outreach efforts related to this process will include the following:

March to mid-2015

- SAFCA and USACE will co-host community meetings within the study areas in April, in a time frame that allows significant advance review time of the Draft EIR but within the limits of the comment period
- Notice of the Draft EIR's release and the community meetings will be made by:
 - Printed ad in The Sacramento Bee and other local publications
 - Direct mail to property owners located directly adjacent to the study area
 - Direct mail to 22 homeowner/community associations located within the study area
 - Direct mail to ~200 governmental agencies and stakeholders, including business associations and non-profit organizations
- Posting of the Draft EIR on SAFCA's website along with additional information about the project

Next Steps

- SAFCA to release Draft EIR for the Levee Accreditation Program in early March
- Community meetings late March/early April
- Adopt EIR in June 2015
- Anticipate first construction contract to be awarded in 2016 (North Area)
- SAFCA levee accreditation improvements completed in 2018/2019