

Lower Sacramento / Delta North Regional Flood Management Plan

RFMP Overview & Relationship to USACE Studies

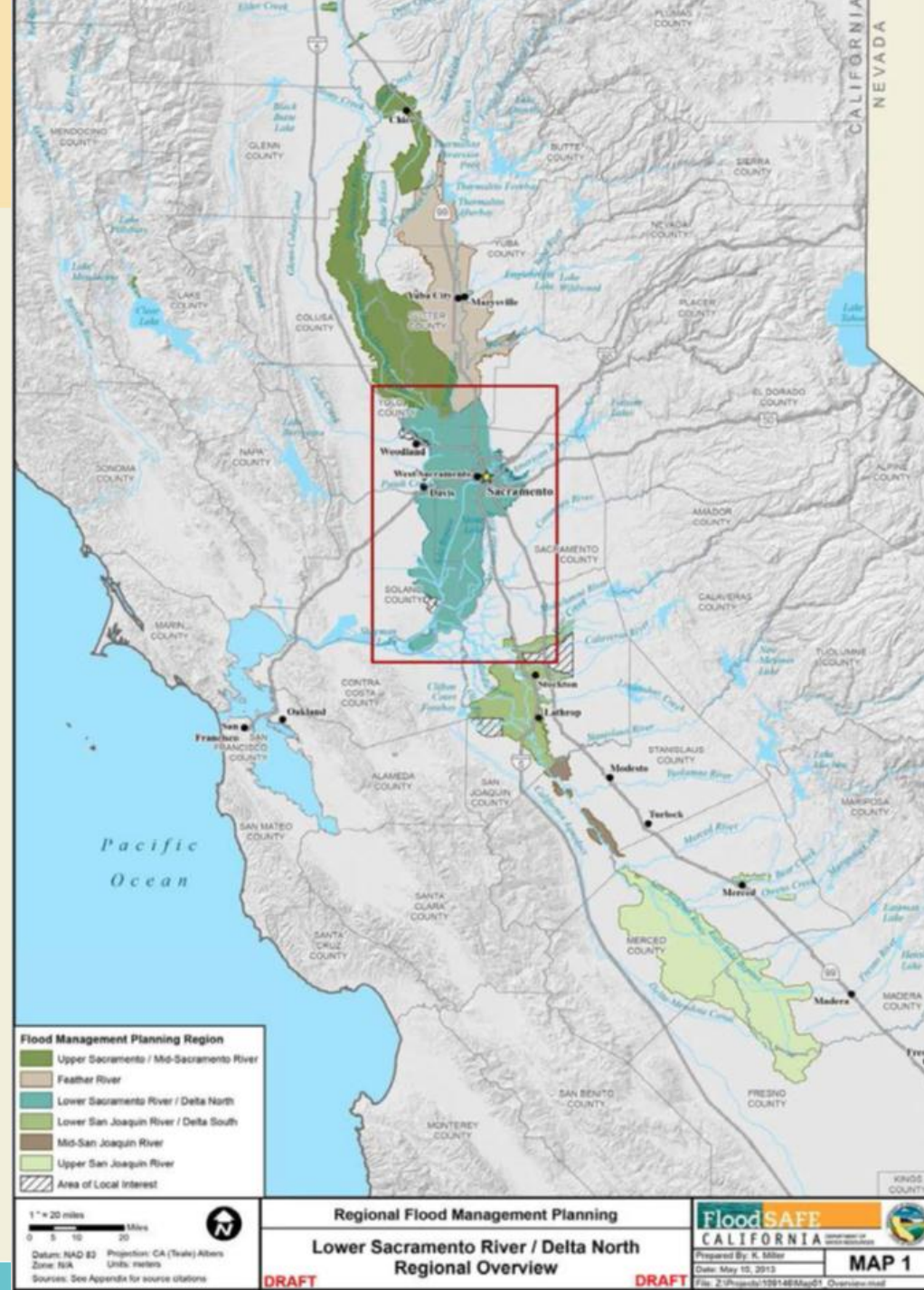
Central Valley Flood Protection Board

July 11, 2014



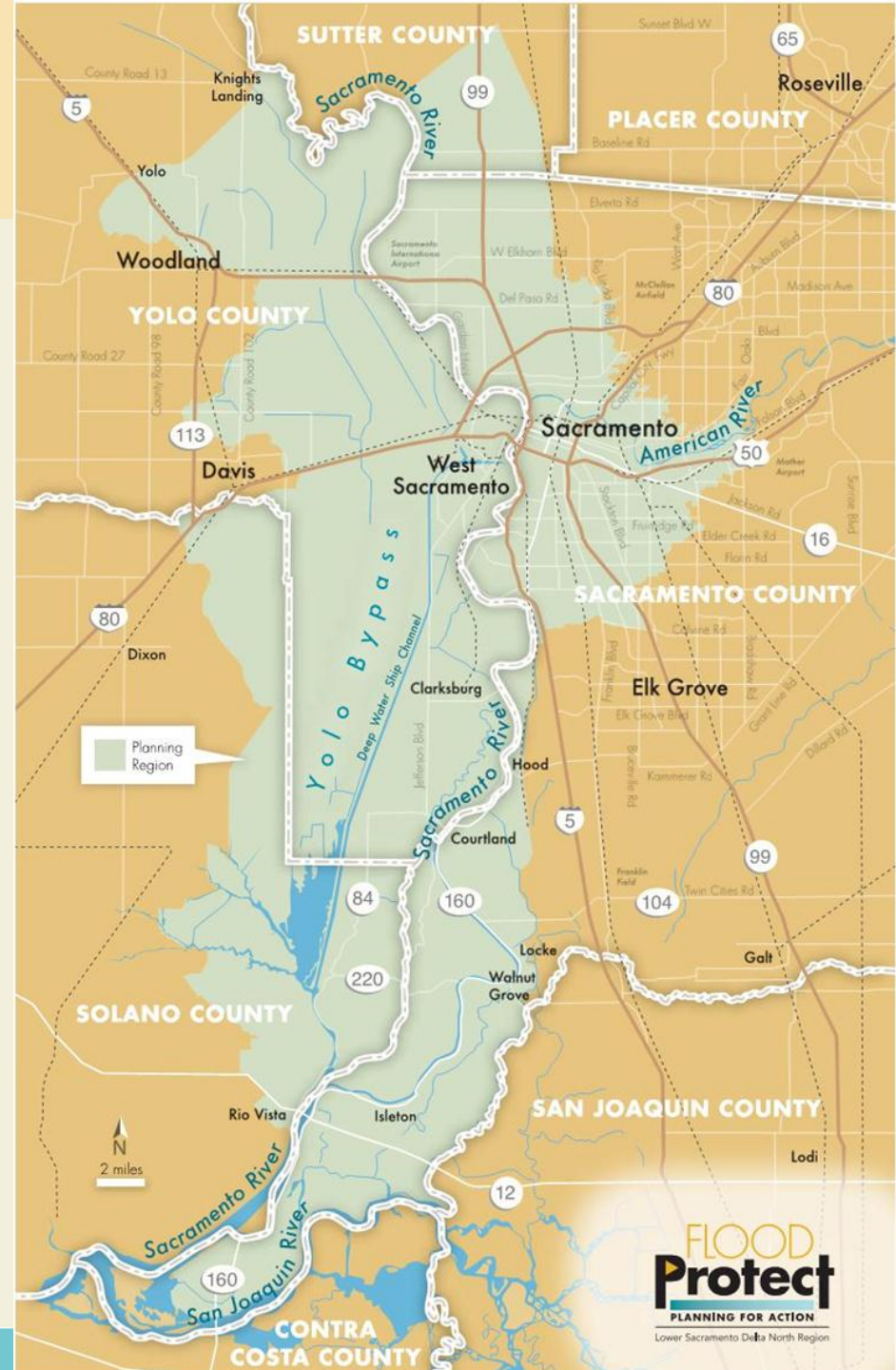
Presentation Objectives

- ▶ Provide an update regarding current status of the Regional Flood Management Plan (RFMP)
- ▶ Introduce the concept of an Integrated Water Management Plan (IWMP) for the Yolo Bypass / Cache Slough area
- ▶ Demonstrate consistency between RFMP/IWMP and the USACE recommended plans



Regional Setting

- ▶ Yolo & Sacramento Bypasses are the heart of the flood system
- ▶ Encompasses diverse collection of urban and rural stakeholders
- ▶ Contains nearly 70% of EAD for all floodplains protected by SPFC facilities
- ▶ Land Use:
 - Agriculture = 66%
 - Urban / Developed = 18%
 - Native / Grazing = 16%



RFMP Findings & Status

- ▶ Recommends 116 regional improvement projects:
 - Urban = 30
 - Small Community = 21
 - Rural = 65
- ▶ Identifies 15 conservation opportunities ready for integration with recommended single-purpose flood projects
- ▶ Includes Integrated Water Management Plan (IWMP) concept for the Yolo Bypass and Cache Slough area.
- ▶ RFMP Schedule:
 - Joint Administration Committee Review – Week of July 7th
 - Submit Final Report to DWR – July 21st
 - Final Public Meeting – August 18th

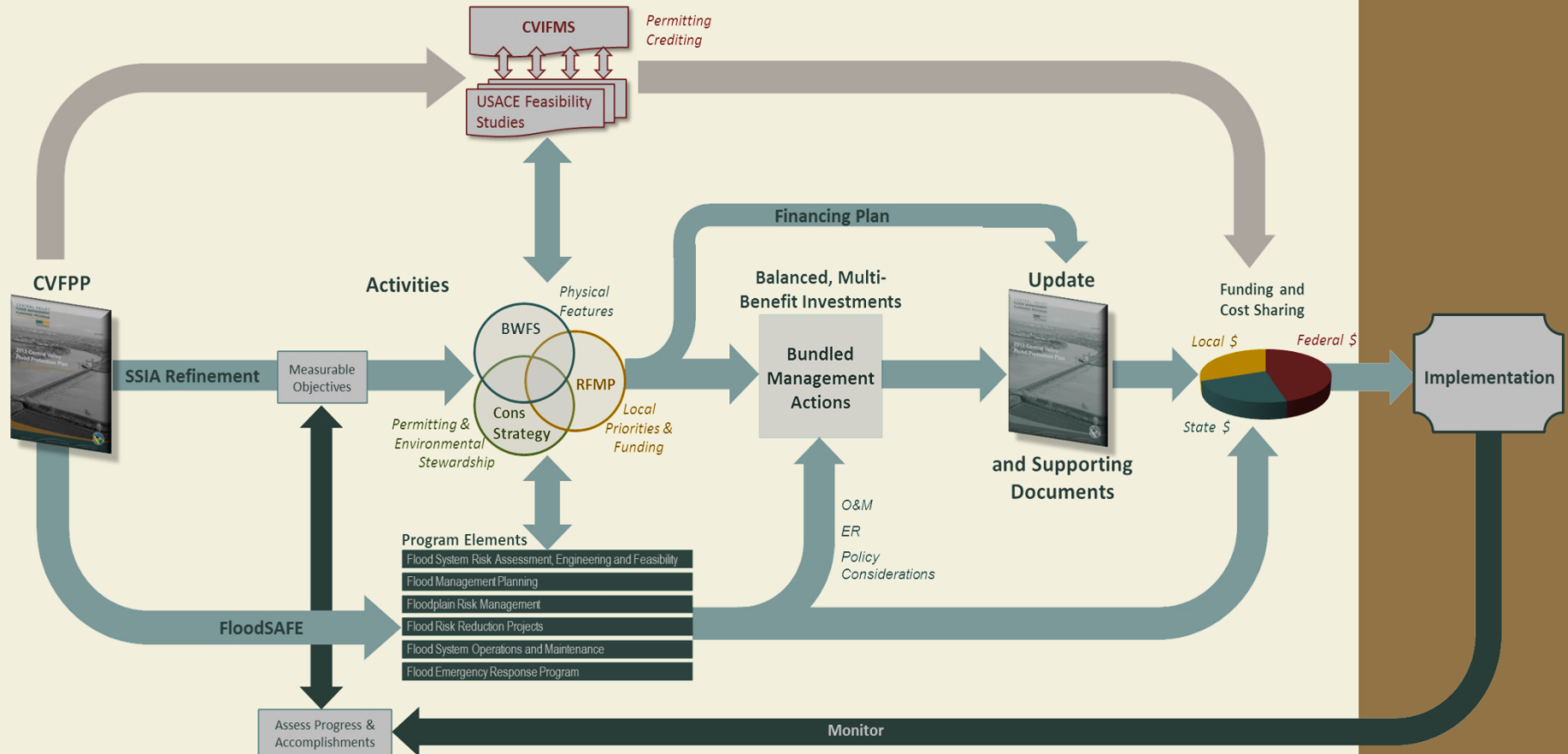


Yolo Bypass / Cache Slough IWMP

- ▶ Based on the belief that we can all “get better together”
- ▶ IWMP Goals:
 - Implement system-wide flood improvements
 - Improve agricultural sustainability
 - Conserve / create high value habitat
 - Incorporate water supply improvements for the region in project development
 - Establish a more sustainable approach to O&M
- ▶ Mixture of policy and project elements that create a framework for improving the bypass to support multiple objectives
- ▶ IWMP Status:
 - RFMP includes conceptual description of IWMP
 - Coordination with DWR underway
 - Develop agreement on scope, schedule, and budget this CY



Planning Integration

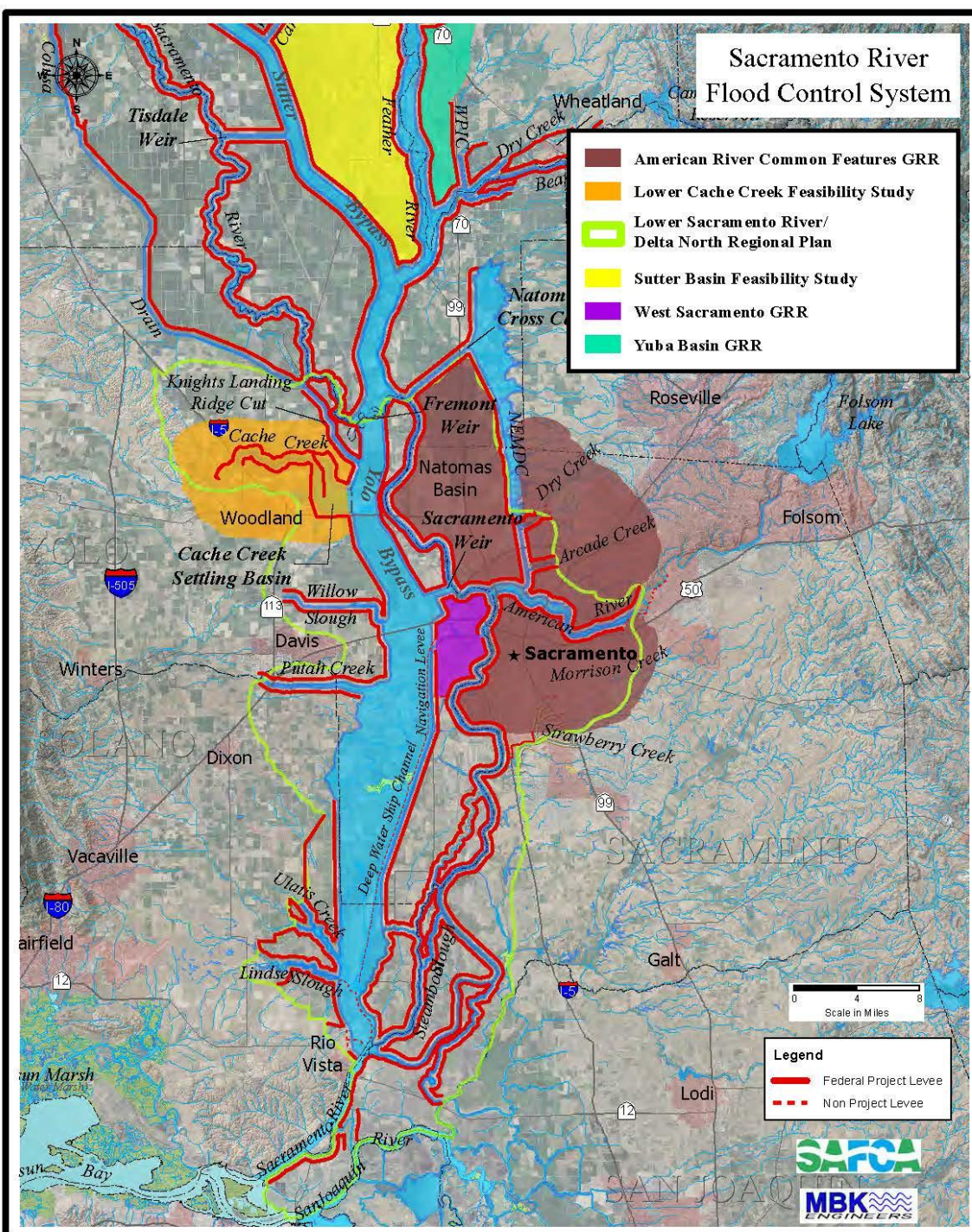


USACE Studies

- ▶ Boundary for Central Valley Integrated Flood Management Study (CVIFMS) is same as Sacramento River Basin Wide Feasibility Study
- ▶ Natomas Basin portion of Common Features Project authorized under WRRDA 2014



floodprotectplan.com



Recommended Plan Comparison

- ▶ Tentatively selected plans (TSP) recommended in the West Sacramento and Common Features General Reevaluation Reports are either included in the RFMP or a proposed element of the IWMP
- ▶ Strong regional support exists for their immediate implementation
- ▶ Each TSP is a critical subset of the more broadly developed regional plans.
 - Southport Levee Setback
 - Sacramento Weir and Bypass Widening
- ▶ Framework created under CVFPP / RFMP processes allows for more innovation in addressing non-Federal concerns associated with Federal projects



QUESTIONS?

For more information on this RFMP, visit...

www.floodprotectplan.com



floodprotectplan.com