

# PROJECT CLOSEOUT



Transfer of Operations and Maintenance (O&M)  
Responsibilities for the  
Natomas Cross Canal South Levee

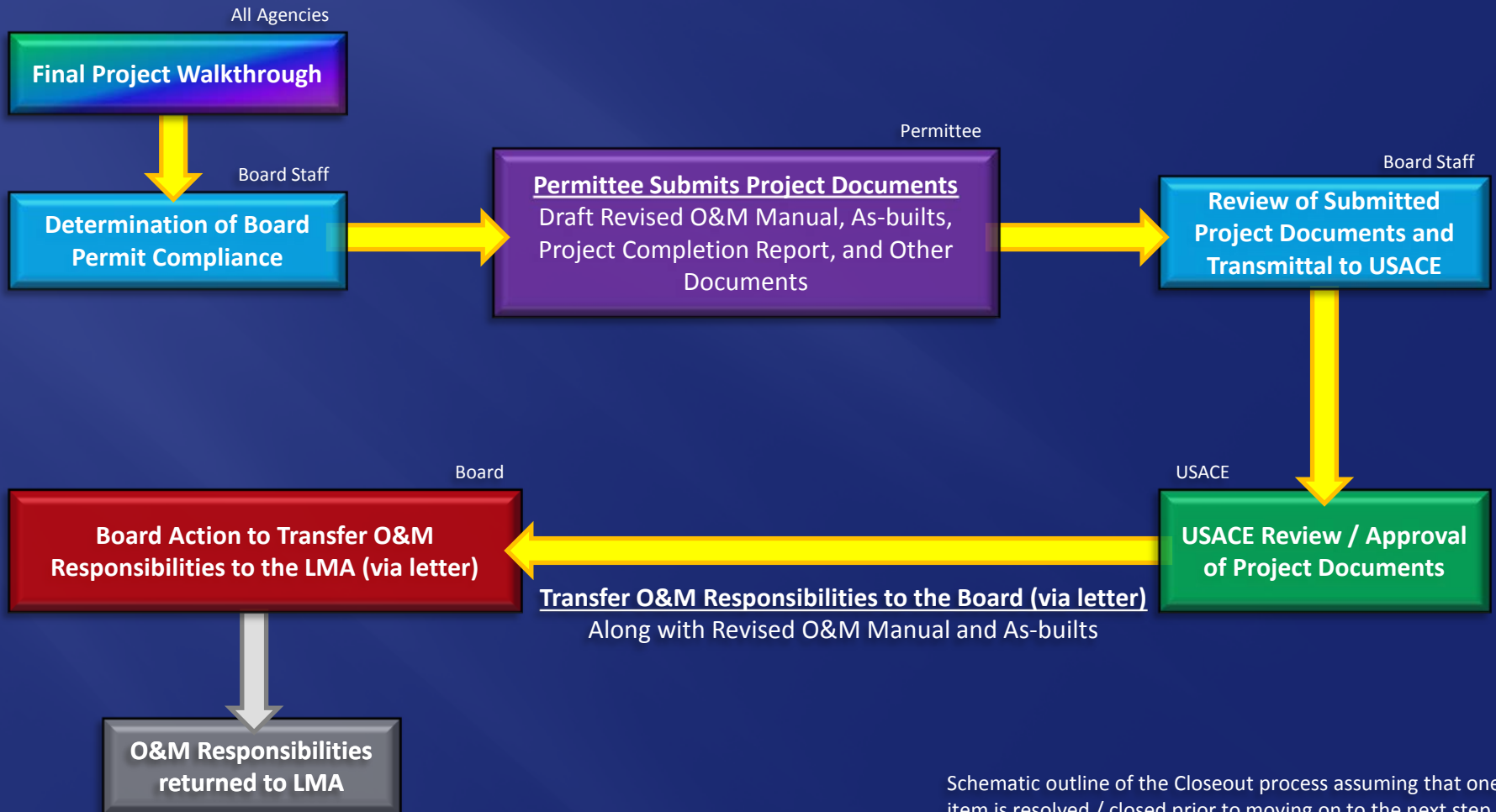
to  
Reclamation District 1000

June 27, 2014

# CLOSEOUT PROCESS



After project construction is complete, the process outlined below is followed:



Schematic outline of the Closeout process assuming that one item is resolved / closed prior to moving on to the next step.



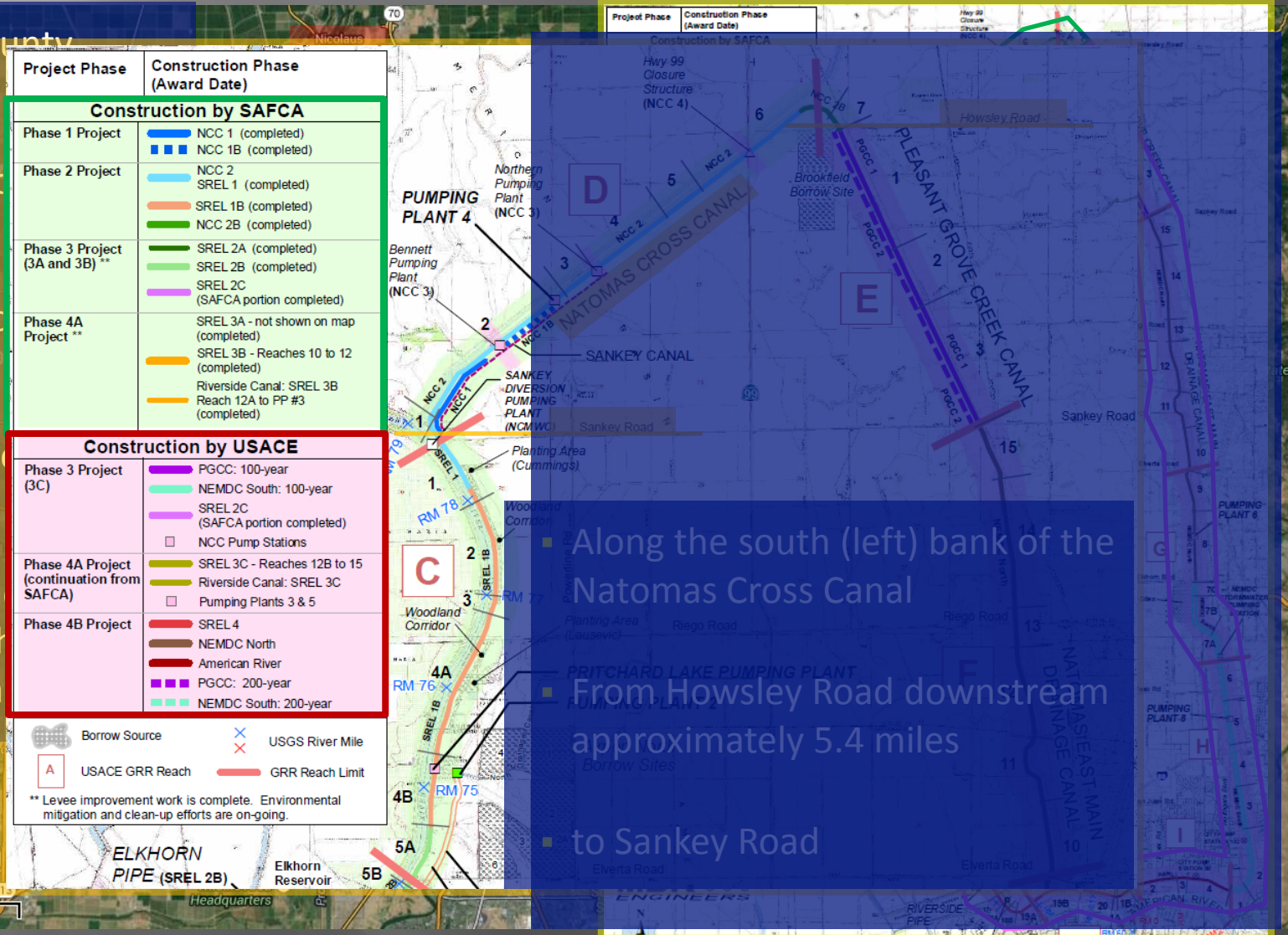
# BOARD ACTION

## Board staff is asking the Board to:

- **acknowledge acceptance**, from the U.S. Army Corps of Engineers (USACE), responsibilities to operate and maintain the Natomas Cross Canal South Levee (**NCCSL**) via USACE Sacramento District letter to the Board,
- **acknowledge receipt**, from the USACE, the revised *Supplement to Standard Operations and Maintenance Manual*, Sacramento River Flood Control Project, Unit No. 125, Back Levee of Reclamation District No. 1000, U. S. Army Corps of Engineers, Sacramento, California, April 2014 (Revised O&M Manual),
- **acknowledge receipt**, from the USACE, final project as-built drawings (originally prepared by SAFCA),
- **and transfer**, via June 27, 2014 draft letter, responsibilities to operate and maintain the NCCSL to Reclamation District 1000 (RD 1000), along with the Revised O&M Manual and as-built drawings.

# PROJECT LOCATION

- In Sutter County
- North of Sacramento River
- South of Nicolaus
- West of Roseland
- In the northern portion of the Natomas Basin



- Along the south (left) bank of the Natomas Cross Canal
- From Howsley Road downstream approximately 5.4 miles
- to Sankey Road



# AUTHORITY OF THE BOARD



- California Water Code § 8350 and § 8370
- California Code of Regulations, Title 23 (**Title 23**)
- Rivers and Harbors Act of 1899, Title 33 United States Code § 408 (**Section 408**)
- Prior and Revised Supplements to the Standard Operations and Maintenance Manual (June 1959 and May 2014)



# PROJECT HISTORY

- **1958** – Responsibilities for O&M for the completed project works under the Prior O&M Manual were officially transferred to the Board
- **3/2007 and 1/2008** – Board held public hearings for Permit Nos. 18159-1 and 18159-2, respectively (approved sending 408 request letters and conditionally approved permits)
- **4/2007** – Board issued Permit No. 18159-1 (Phases 1 and 1B)
- **6/2008** – DWR and SAFCA executed EIP Funding Agreement
- **6/2009** – Board issued Permit No. 18159-2 (Phases 2 and 2B)
- **2/2010** – Board and SAFCA executed Operation, Maintenance, Repair, Replacement, and Rehabilitation (OMRR&R) Agreement
- **9/2010** – SAFCA submitted Revised O&M Manual and other docs to Board and USACE
- **April 18, 2014** – USACE accepted the project and transferred O&M to Board
- **March 20 and May 20, 2014** – Board staff notified DWR and USACE Sacramento District that it had accepted Permit Nos. 18159-1 and 18159-2
  - determined: compliant with Title 23, meets all Board and USACE conditions, and conforms to Supplement to the Local Project Cooperation Agreement (Feb 2010)

# FUTURE WORK



## Future Work to be Completed:

- **Five sections of the NCCSL** where remaining construction will be completed by USACE as authorized by Water Resources Reform and Development Act of 2014 (**2014 WRRDA**)
  - will complete the designed improvements to the NCCSL at three pump stations (Bennett, Pumping Plant No. 4, and Northern), the State Route 99 closure structure, and the east end tie-in to the Pleasant Grove Creek Canal near Howsley Road.
- DWR real estate and Chief Counsel's Office staff are **finalizing six real estate transfers** to the Sacramento-San Joaquin Drainage District.
  - transfer of project operations and maintenance responsibilities to RD 1000 is not dependent upon completion of the real estate transfers

# ENGINEER'S CERTIFICATION



Certification by CA licensed professional engineers for all four phases of work:

## Phase 1 Certification - June 16, 2011

| Category of Work                          | Registered Professional Engineer | Company             |
|---|----------------------------------|---------------------|
| Civil Design of Levee Improvements        | Jonathan L. Kors, Civil          | Wood Rodgers, Inc.  |
| Geotechnical Design of Levee Improvements | Mark H. Stanley, Geotechnical    | Kleinfelder, Inc.   |
| Hydraulic Analyses in Support of Design   | Michael C. Archer, Civil         | MBK Engineers, Inc. |
| Construction Management                   | Mark S. Martin, Civil            | PB Americas, Inc.   |
|   | Stephan R. Sullivan              | Mead & Hunt         |

## Phase 1B Certification - June 22, 2011

| Category of Work                          | Registered Professional Engineer | Company             |
|---|----------------------------------|---------------------|
| Civil Design of Levee Improvements        | Jonathan L. Kors, Civil          | Wood Rodgers, Inc.  |
| Geotechnical Design of Levee Improvements | Mark H. Stanley, Geotechnical    | Kleinfelder, Inc.   |
| Hydraulic Analyses in Support of Design   | Michael C. Archer, Civil         | MBK Engineers, Inc. |
| Construction Management                   | Mark S. Martin, Civil            | PB Americas, Inc.   |

## Phase 2, 2B Certification - March 31, 2014

| Category of Work                          | Registered Professional Engineer   | Company              |
|---|------------------------------------|----------------------|
| Civil Design of Levee Improvements        | Jonathan L. Kors, Civil            | Wood Rodgers, Inc.   |
| Private Irrigation and Borrow Sites       | Stephan R. Sullivan                | Mead & Hunt          |
| Geotechnical Design of Levee Improvements | Christopher R. Nardi, Geotechnical | Kleinfelder, Inc.    |
| Hydraulic Analyses in Support of Design   | Michael C. Archer, Civil           | MBK Engineers, Inc.  |
| Construction Management                   | Mark S. Martin, Civil              | Parsons Brinckerhoff |



# CEQA ANALYSIS



- The action before the Board described in the Staff Report consists solely of the transfer of operations and maintenance responsibilities and corresponding documents for the completed project to RD 1000.
- This action constitutes a ministerial approval statutorily exempt from CEQA under CEQA Guidelines section 15268.

# STAFF CONCLUSIONS



Board staff concludes that the NCCSL (Phases 1, 1B, 2, and 2B):

- were constructed in accordance with the final plans and specifications,
- met all permit conditions from both the Board and USACE,
- is compliant with Title 23,
- was properly certified by California licensed professional engineers, and
- was properly transferred by the USACE to the Board and all necessary review and determinations have been made to transfer O&M responsibilities to RD 1000 as the local maintaining agency.

# STAFF RECOMMENDATION



## Board Staff is Recommending that the Board adopt Resolution 2014-22, which:

- **approves** the Revised O&M Manual and as-built drawings, as transmitted and accepted by the USACE;
- **accepts** responsibilities to operate and maintain the NCCSL, a portion of the SRFCP, as described in the Revised O&M Manual;
- **transfers** those same responsibilities accepted above (along with copies of the Revised O&M Manual and as-built drawings) to RD 1000 through approval of the draft Board Transfer Letter;
- **determines** that the transfers from the Board to RD 1000 are ministerial approvals and statutorily exempt from CEQA; and
- **directs** the Board's Executive Officer to:
  - **execute** the Board's Operations and Maintenance Transfer Letter to RD 1000 in substantially the form provided, and
  - **file** a Notice of Exemption with the State Clearinghouse.

# QUESTIONS

