

# BEAR CREEK & MORMON SLOUGH LOI



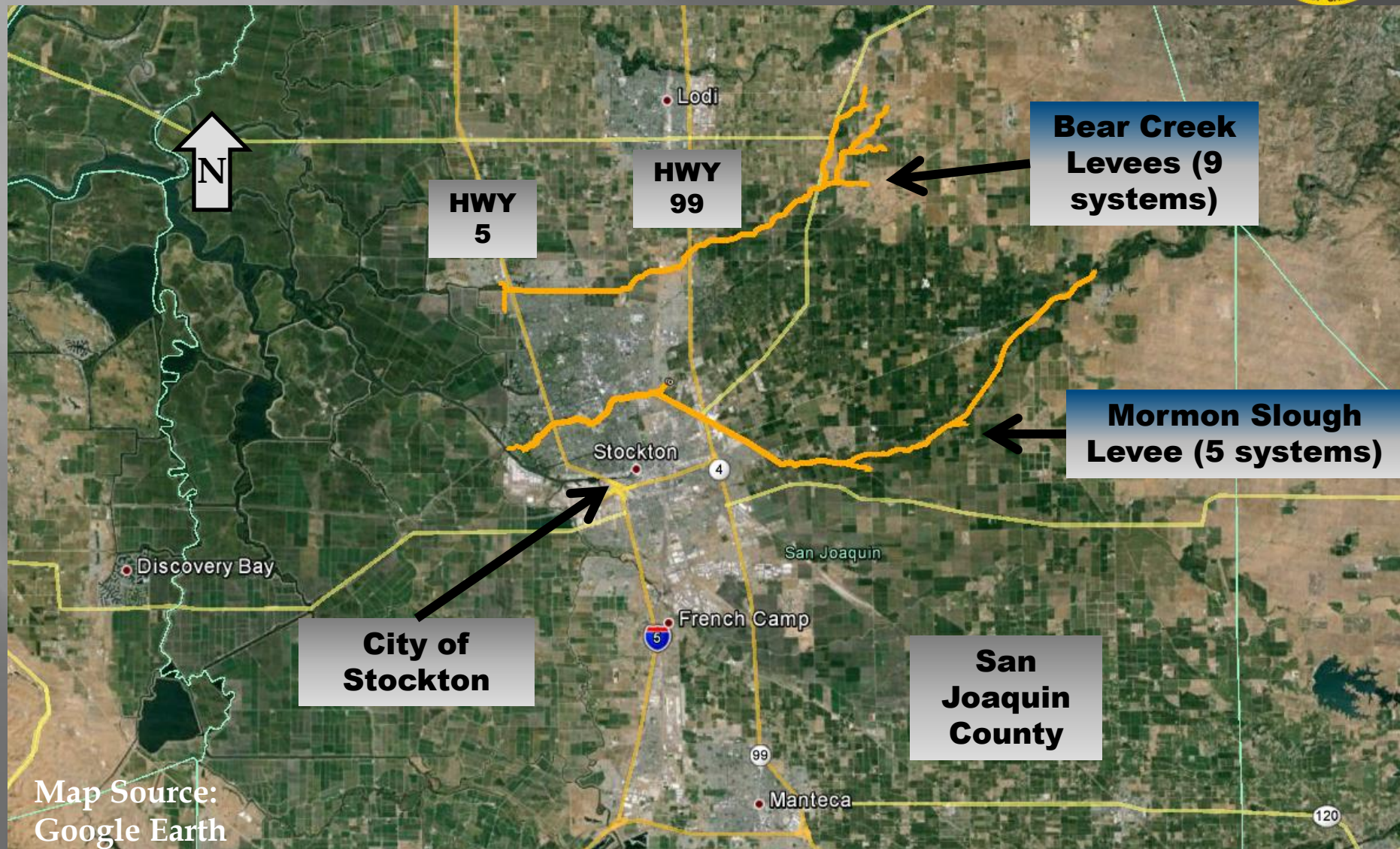
## AGENDA ITEM NO. 8A LOI FOR SWIF BEAR CREEK & MORMON SLOUGH LEVEE SYSTEMS (SAN JOAQUIN COUNTY)

ALISON TANG

CVFPB STAFF

AUGUST 22, 2014

# BEAR CREEK & MORMON SLOUGH LOI



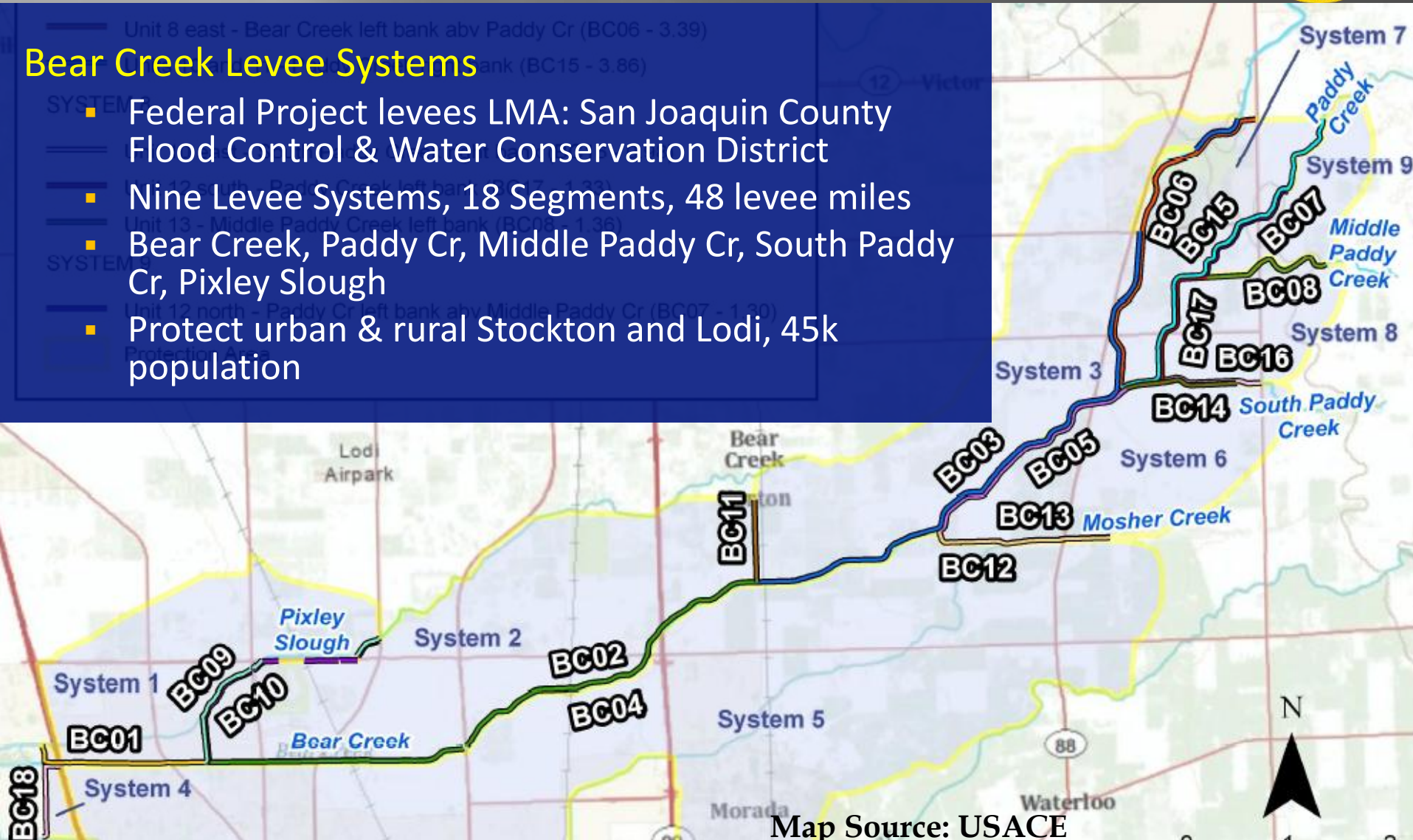
Map Source:  
Google Earth

# BEAR CREEK & MORMON SLOUGH LOI



## Bear Creek Levee Systems

- Federal Project levees LMA: San Joaquin County Flood Control & Water Conservation District
- Nine Levee Systems, 18 Segments, 48 levee miles
- Bear Creek, Paddy Cr, Middle Paddy Cr, South Paddy Cr, Pixley Slough
- Protect urban & rural Stockton and Lodi, 45k population



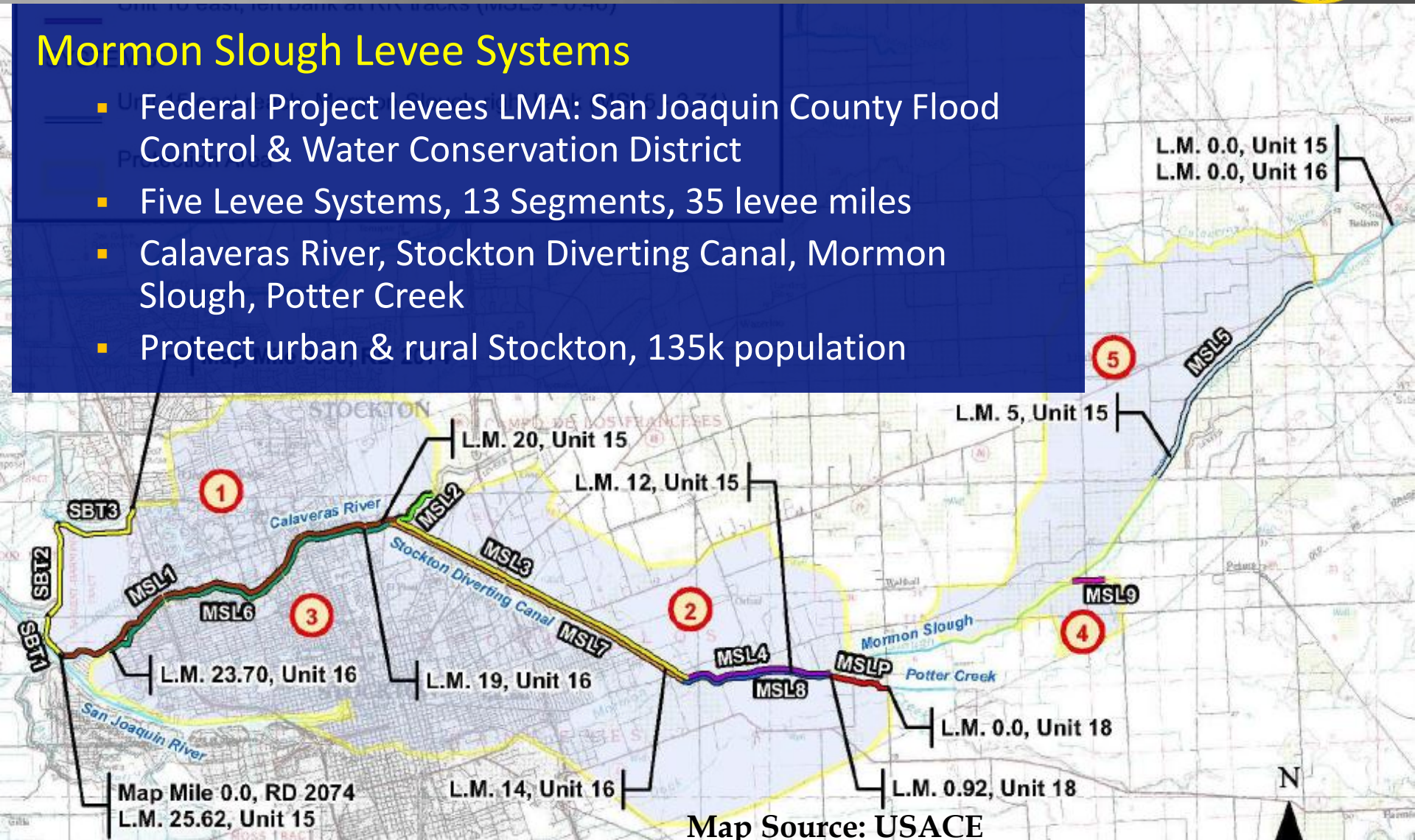
Map Source: USACE

# BEAR CREEK & MORMON SLOUGH LOI



## Mormon Slough Levee Systems

- Federal Project levees LMA: San Joaquin County Flood Control & Water Conservation District
- Five Levee Systems, 13 Segments, 35 levee miles
- Calaveras River, Stockton Diverting Canal, Mormon Slough, Potter Creek
- Protect urban & rural Stockton, 135k population



# BEAR CREEK & MORMON SLOUGH LOI



## Agency Roles

- CVFPB is non-federal sponsor for all federal Project levees.
- RD 2074 co-sponsors one Mormon Slough system.
- SJAFCA co-sponsors four Bear Creek systems and one Mormon Slough system.
- San Joaquin County operates & maintains all federal Project levees.
- All partner agencies support this effort to submit an LOI to develop a SWIF.

# BEAR CREEK & MORMON SLOUGH LOI



## Public Law 84-99 Status

### *California Levees Roundtable*

Date	Event	PL 84-99 Status
April 2012	PI Reports Released	<b>Active*:</b> 8 of 9 Bear Creek 4 of 5 Mormon Slough
August 2012	Framework* Expiration	<b>Active:</b> 1 of 9 Bear Creek 0 of 5 Mormon Slough
October 2012 – July 2013	Ongoing Re-inspections: 6 on Bear Creek 3 on Mormon Slough	<b>Active:</b> 7 of 9 Bear Creek 3 of 5 Mormon Slough

\* California Central Valley Flood System Improvement Framework

# BEAR CREEK & MORMON SLOUGH LOI



## Purpose of the LOI and SWIF

- If accepted by the USACE, the LOI will allow the Levee Systems to regain or retain eligibility for PL 84-99 Rehabilitation Program assistance for two years while a SWIF plan is developed.

## Staff Recommendation

- Staff has reviewed the LOI submitted by San Joaquin County and finds that it adequately addresses the USACE's six requirements for submitting a LOI for a SWIF; therefore
- Staff recommends that CVFPB authorize the Acting Executive Officer to finalize a letter of transmittal to the USACE and forward it with the LOI to the USACE.

# BEAR CREEK & MORMON SLOUGH LOI



LMA

San Joaquin County Flood Control and Water Conservation District

John Maguire, Engineering Services Manager

Mike Rossiter, District Engineer

# BEAR CREEK & MORMON SLOUGH LOI



- **USACE Policy for Development and Implementation of System-Wide Improvement Frameworks (SWIFs)**
- Section 7. Requirements for Development and Submittal of a SWIF
  - a. Requirements for Submitting a Letter of Intent for a SWIF. A letter of Intent must be signed by all associated levee sponsors.
    - (1) Identification of levee systems to be covered as listed in the NLD;
    - (2) Brief description of deficiencies or issues that will be included in the SWIF and discussion of how a system-wide approach will improve flood risk reduction;
    - (3) Demonstration that significant non-federal resources have been, or will be committed;
    - (4) Anticipated interim risk reduction measures that will be implemented throughout the SWIF process
    - (5) Brief description of existing or planned interagency collaborative efforts;
    - (6) List of anticipated state and federal permits and consultation requirements, needed to implement the SWIF.

# BEAR CREEK & MORMON SLOUGH LOI



## Agency Roles - Details

- RD 2074 co-sponsors the Mormon Slough - Calaveras R right bank - RD 2074 levee system
  - Segments SBT1, SBT2, SBT3: RD 2074-sponsored non-federal levees
  - Segment MSL1: CVFPB-sponsored federal Project levee
- SJAFCA performed levee improvements in the late 1990s; per 2002 SJAFCA-USACE agreement, SJAFCA is co-sponsor with CVFPB on:
  - Bear Creek - Units 7 west and 21
  - Bear Creek - Units 7, 22, and 23
  - Bear Creek - Unit 8, west of I-5
  - Bear Creek - Units 8, 25, and 27
  - Mormon Slough - Calaveras, Divert Canal left bank
- San Joaquin County is LMA for all federal Project levees