



# Capital Conservation Bank

Yolo County, CA



# Our Team



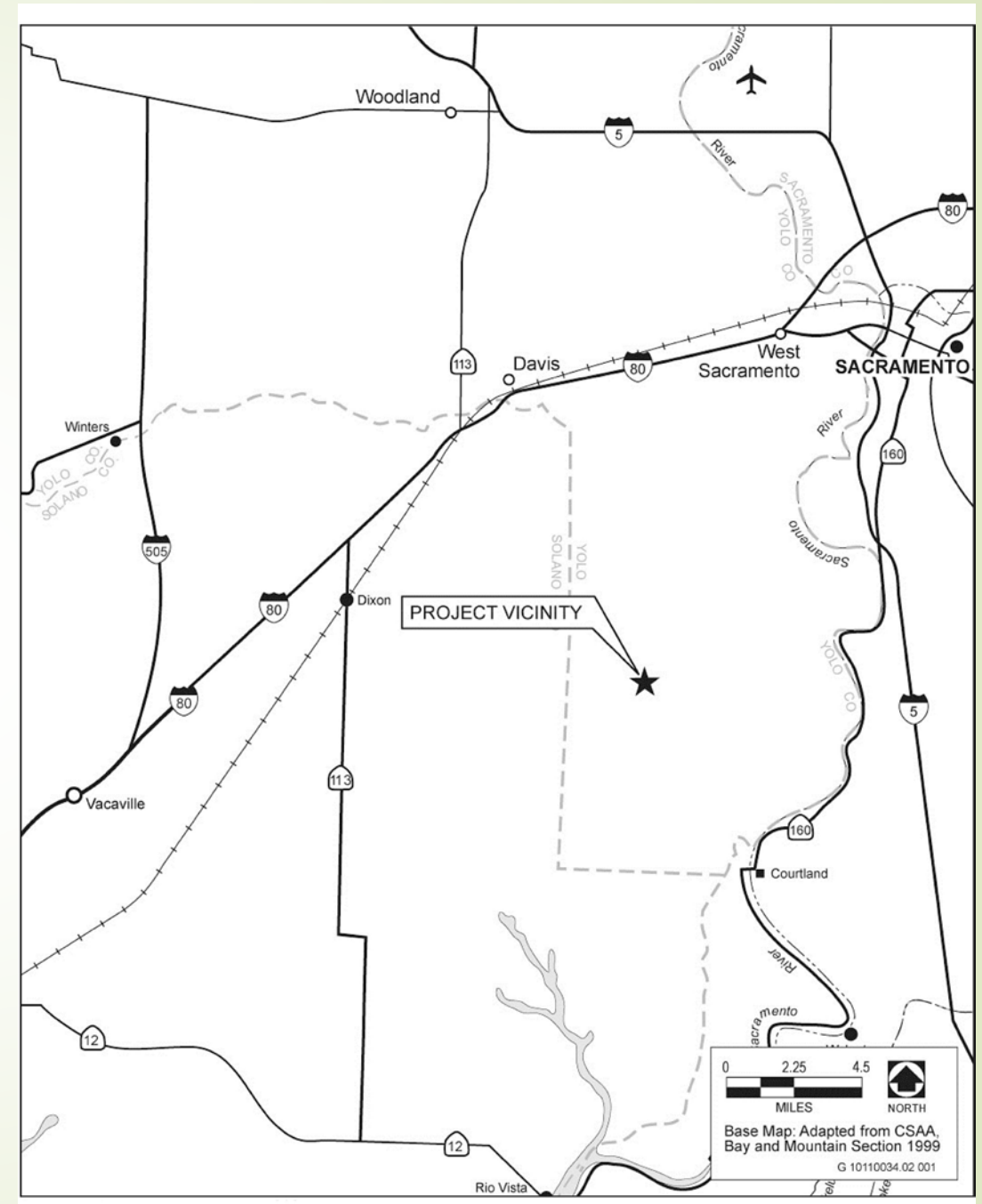
- Dustin Smith- Project Lead
- Nevada Smith- Smith Family Farm Manager
- Tony Frayji- Frayji Design Group, Project Engineer
- Chris Campbell- CBEC Inc., Eco Engineer
- Matt Wacker- HT Harvey & Associates, Biologist

Not in attendance

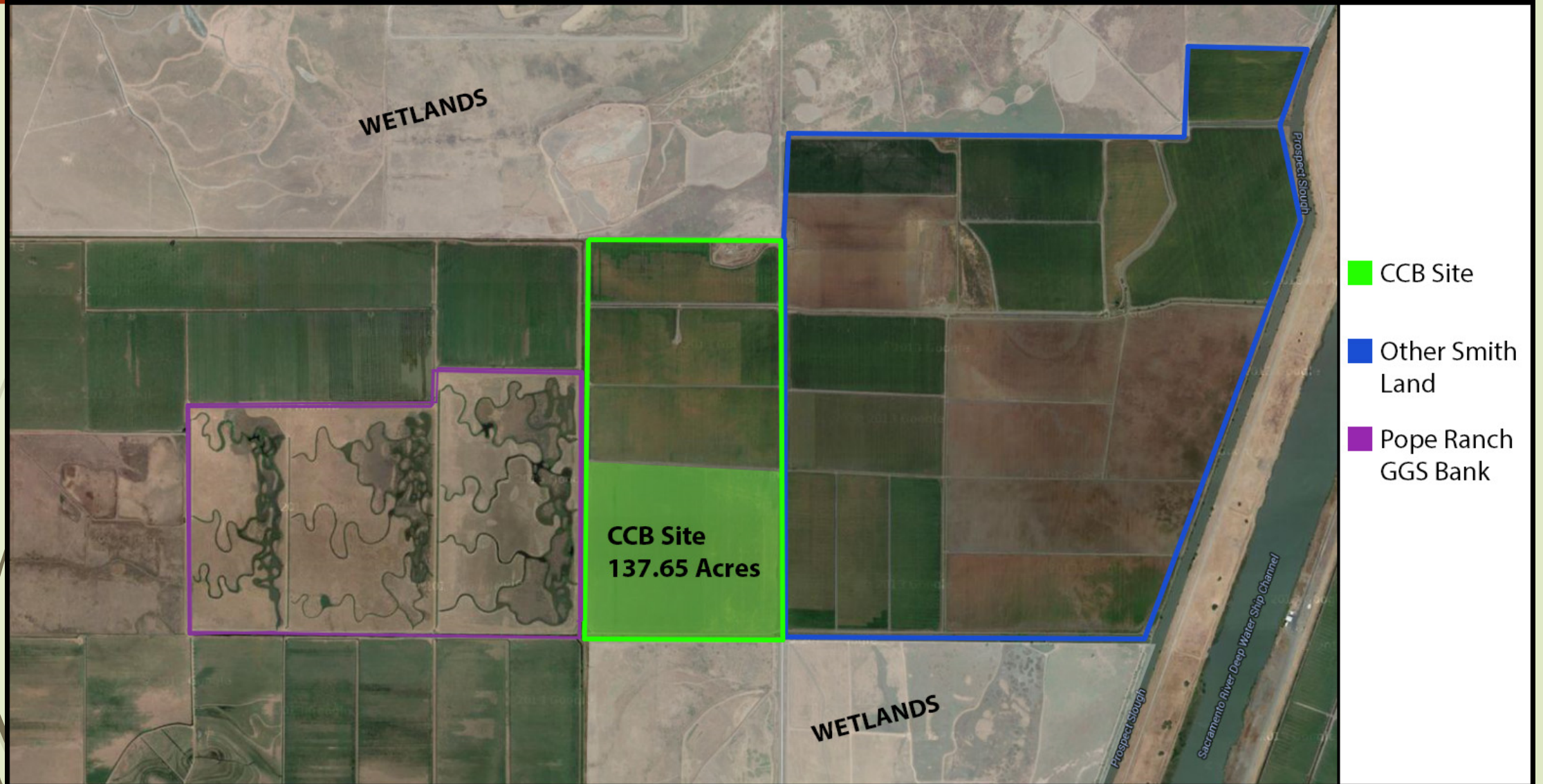
- Eric Hansen- Giant Garter Snake species expert

# Project Overview

- Giant Garter Snake Conservation Bank
- 137.65 Acres of currently fallowed land
- Design is a mosaic of uplands and wetlands. Approximately 1:2 ratio of uplands to wetlands
- Designed to have no impact on Yolo Bypass flood flows
- Optimal location for greatly needed conservation bank to serve both public and private users



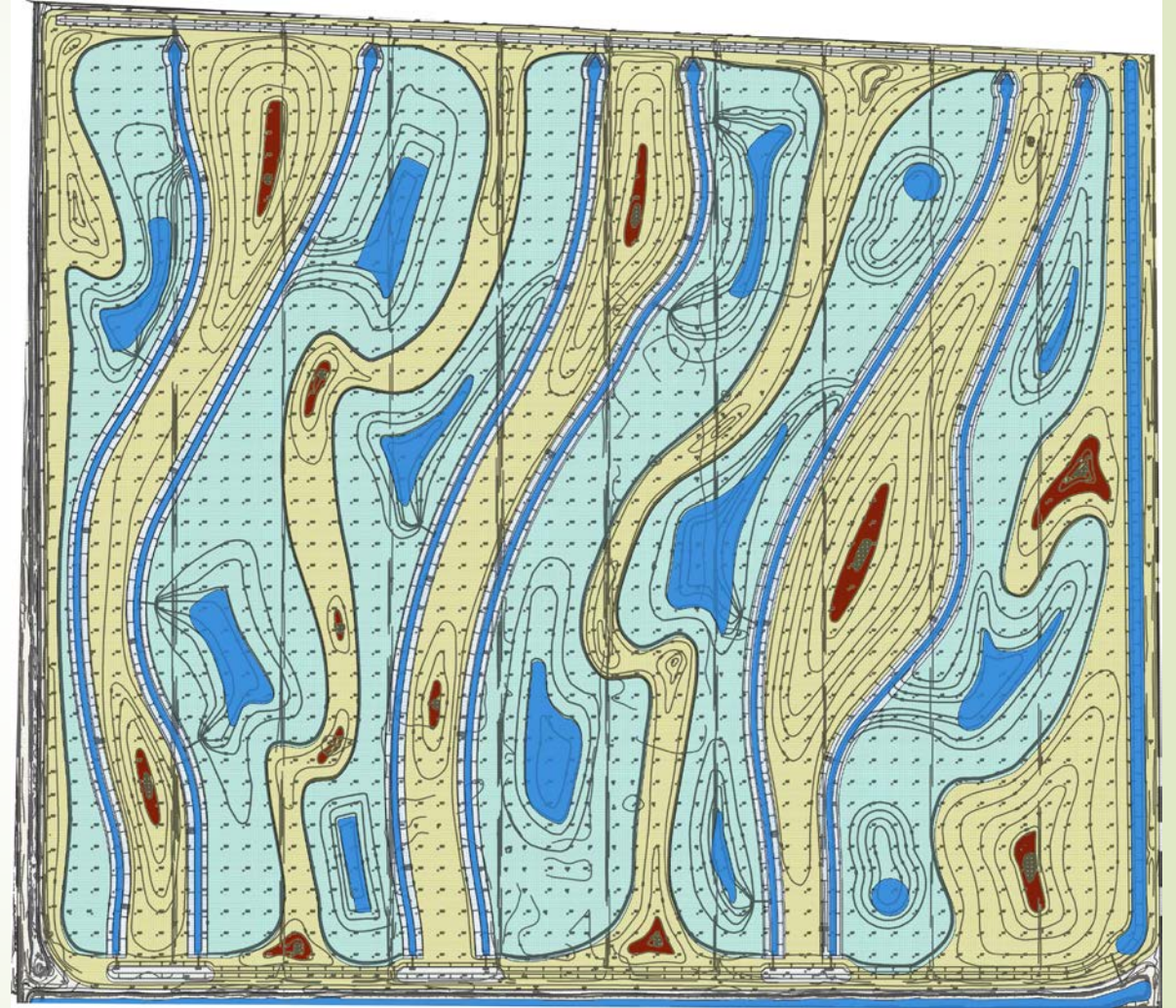
# General Project Map





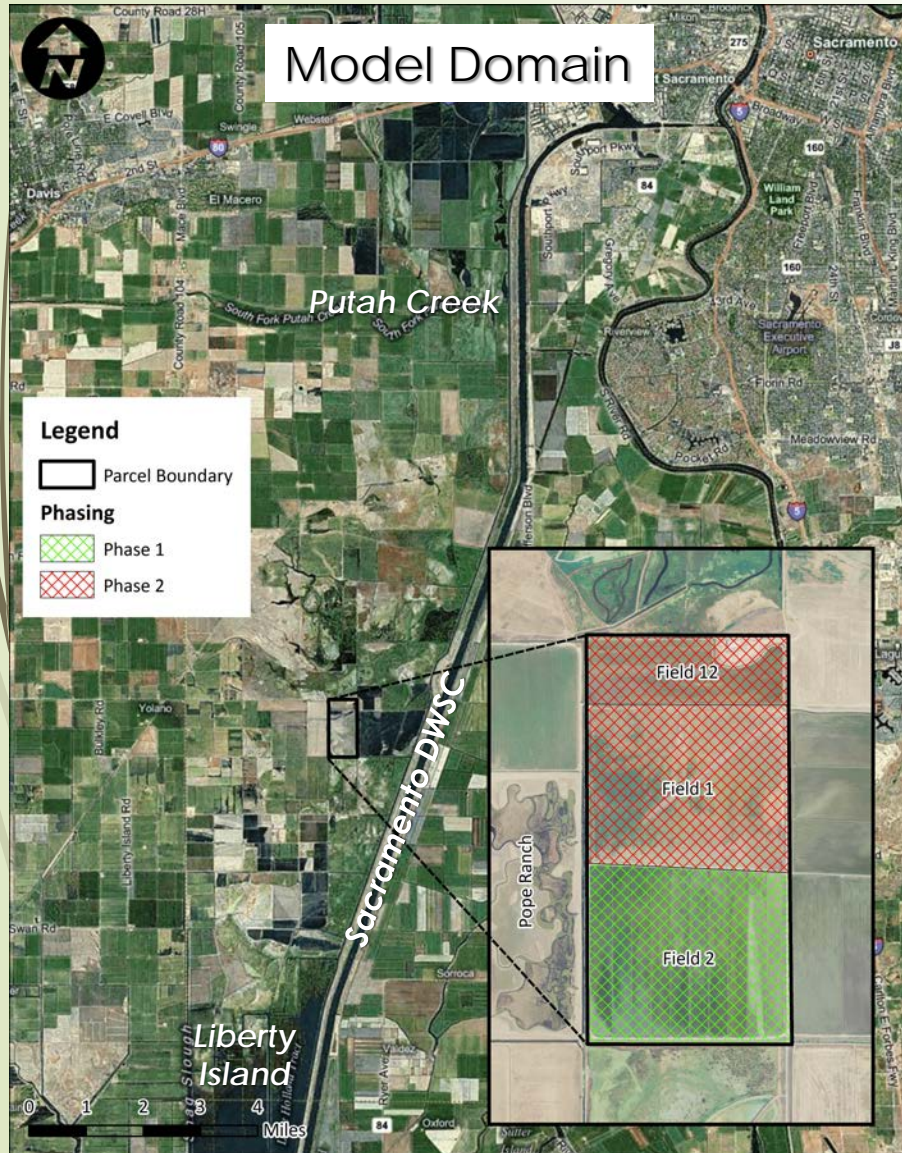
# Habitat Design

- CCB has been designed as a synthesis of the banks constructed over the past 10+ years.
- Designed with bypass in mind
- Design would have no impact on water surface elevations during Yolo Bypass design flows
- Some upland habitat would be above Bypass design water surface elevation
- Utilized a circulation system to minimize water usage, less use than farming equal acreage





# Flood Conveyance Analysis





# Property Analysis Record (PAR) & Endowment Fund



## ➤ PAR

- Calculates numerous costs
  - Staff and consulting time
  - Invasive plant treatment
  - Wetland vegetation management
  - Remedial actions
  - Annual reporting
  - And more
- Annual Inflation accounted for
- Interim and Long-term Management Plans

## ➤ Endowment Fund


- Funded by Applicant, approximately \$1.5M
- Managed by third party, state and federally approved firm
- Accounts for annual inflation
- Third party inspection and reporting to ensure successful management
- All tied back to a site specific approved management plan



Thank you!  
Questions?







# Farming- The Facts

- Pool Soil Condition
- "Unique Farmland" Classification
- Non County maintained road;  
Road 155
- Crop devastation
- Limited Crop Selection
- No Crop Insurance
- Temperature, colder climate
- Low Yielding Crops
- No Fences- No Grazing

# Service Area

- Capital Conservation Bank is outlined by the Blue Line
- Ridge Cut Slough is outlined by the Red Line and is shaded.



H. T. HARVEY & ASSOCIATES  
ECOLOGICAL CONSULTANTS

**Exhibit B-1. Capital Conservation Bank Service Area**  
America's Habitats Capital Conservation Bank (3261-01)  
November 2012





# Permit Status

- 404 Permit issued 12/2013; 401 permit pending
- Biological Opinion issued by USFWS; NLAA letter issued by NMFS
- Yolo County Grading Permit ready for issuance
- USFWS draft BEI submitted; CDFW prospectus pending
- CDFW Incidental Take Permit pending
- CVFPB floodway encroachment permit pending
- CEQA- Draft Circulated by Yolo County



# Yolo County

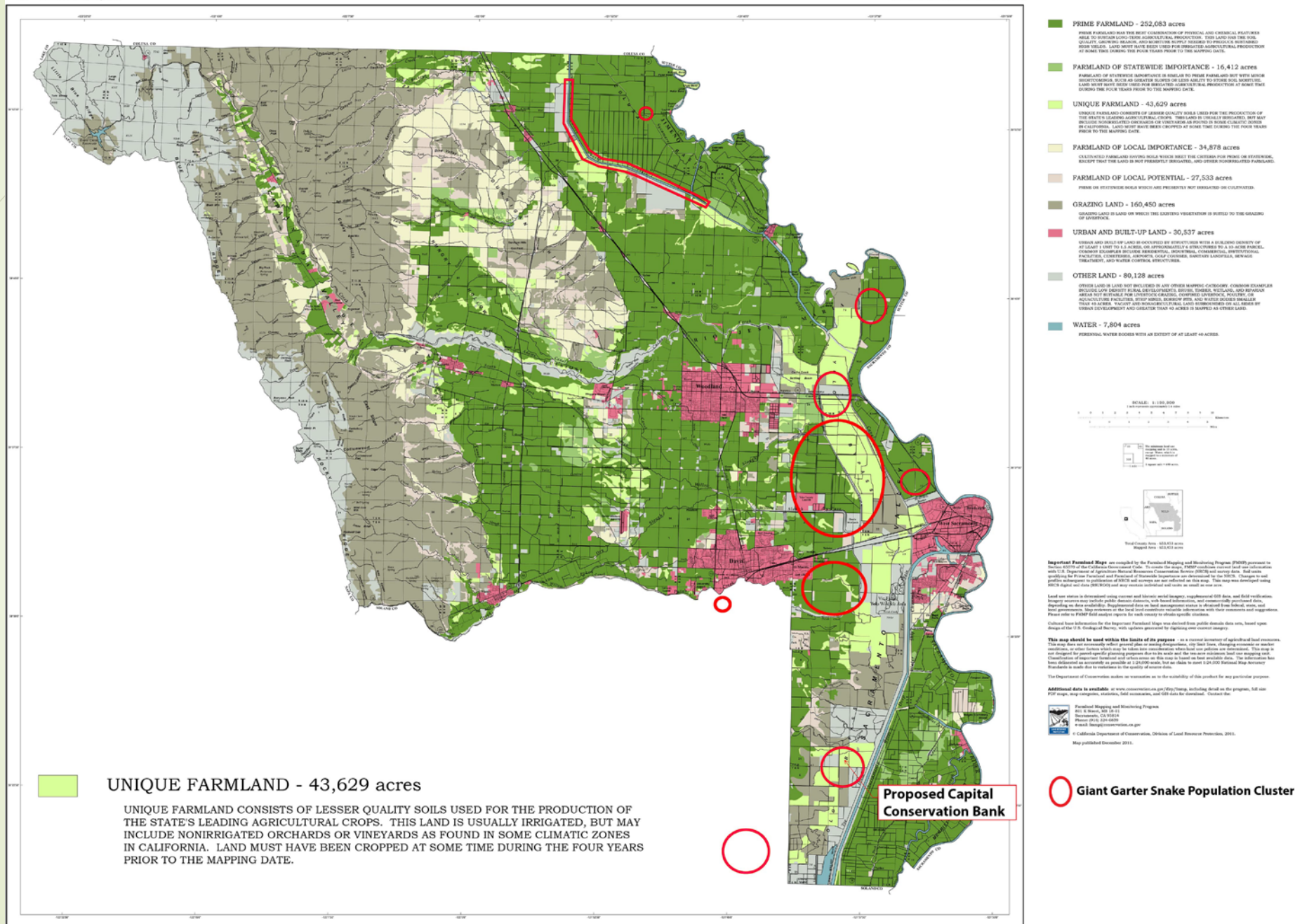
## Benefits

- Yolo County to Receive 2 credits
- 1% of sales donated from first 50% of Credits
- 2% of sales donated from second 50% of Credits
- County to be the recipient of easements along toe drain
- Local in-county mitigation
- Potential application for Yolo County HCP/NCCP
- Job creation

## Planning/Zoning

- Consistent with Yolo County General Plan
- Loss of Ag. Land Mitigation will be required
- Applicant will provide 1:1 mitigation on applicant owned, adjacent land to satisfy ag mitigation.
- Ag. Mitigation Easement along toe drain.







# BDCP



- At this time the facts of BDCP are nebulous and while a lot has been said all of the goals of the BDCP are consistent with the Capital Conservation Bank
- Should long term flooding occur, the project has been designed in such a way their will be more than 3 acres above water in a 100 year flood event.
- The Capital Conservation Bank is consistent with the biological goals of the BDCP. The GGS is a species of subject in many publications and documents produced on the BDCP.



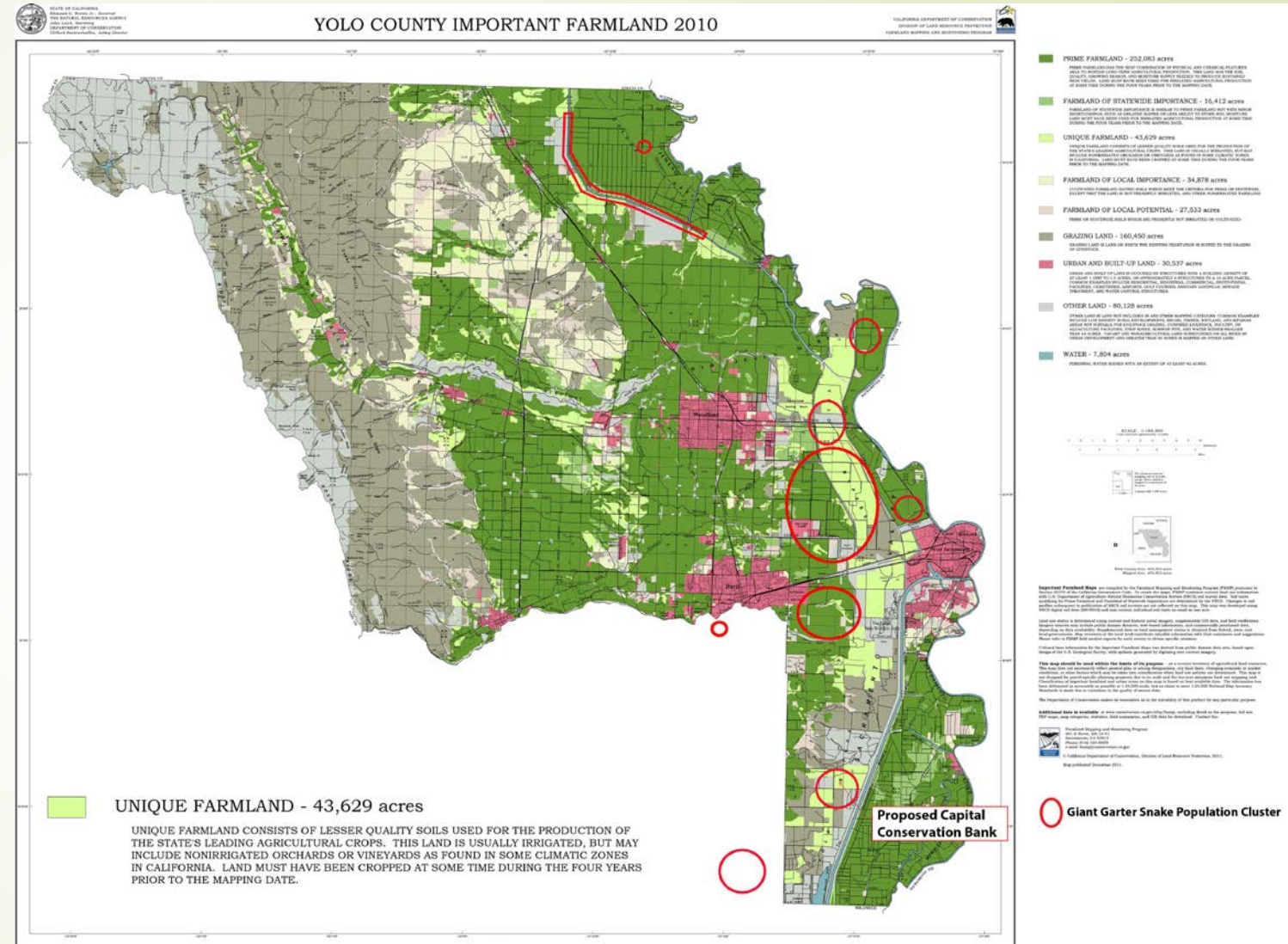
# Construction Plan Overlay





# Closing

- The need for GGS conservation sites are increasing.
- Applicant has exhausted resources for farming operations on this property
- The Alternatives do not make sense. Prime Farmland will be lost elsewhere.
- The benefits of this property provide a resolution to a need without a compromise of County Farms or other assets



# Understanding the Biology

- Overview of the species
- Habitat requirements
- Giant Garter Snake distribution
- Strategic location provides “catchers mitt” for bypass
- Several snakes found on this property.
- Why this location?
- Integration with USFWS Recovery Plan

