

CVFPB Meeting May 23, 2014

USACE INSPECTION RESULTS

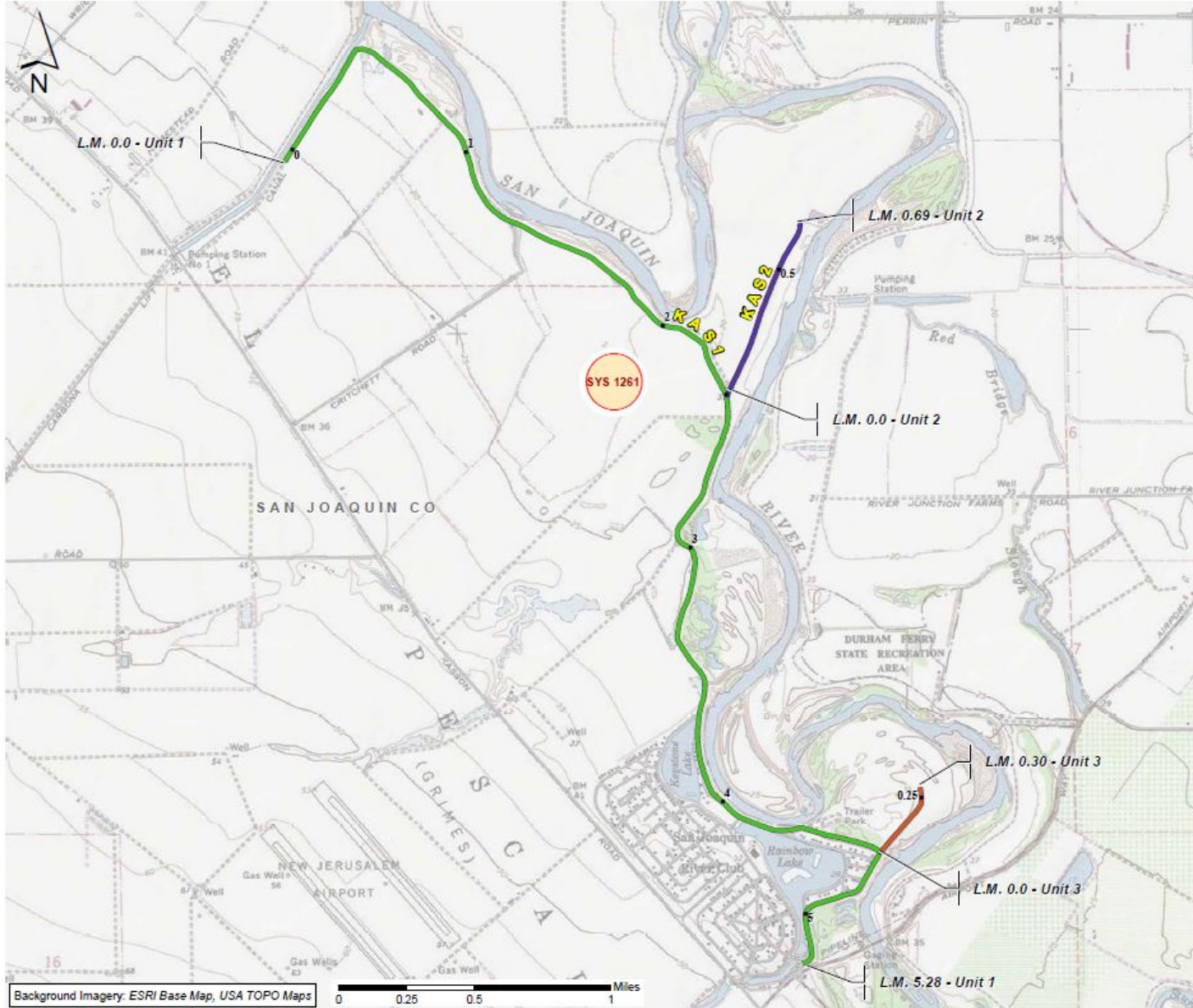
Ryan Larson, P.E.



®

US Army Corps of Engineers
BUILDING STRONG®






RD 2085 – Kasson



Map Legend

Project Levees: NLD SYSTEMS and SEGMENTS
(Levee Inspection System Code)

SYSTEM 1261

-  Unit 1, San Joaquin River left bank (KAS1)
-  Unit 2, spur levee north (KAS2)
-  Unit 3, spur levee south (KAS3)
-  Other Federal Levees
-  Levee Mile

FEDERAL LEVEE PROJECTS
SYSTEM MAP

RD 2085
KASSON DISTRICT

U.S. ARMY CORPS OF ENGINEERS
SACRAMENTO DISTRICT

System: RD 2085 - Kasson District
 System Rating: Minimally Acceptable
 Approved SWIF / LOI: No
 PL 84-99 RP Eligibility: Active

RD 2085 - Kasson - Unit 1, San Joaquin River left bank (KAS1)
 RD 2085 - Kasson - Unit 2, spur levee north (KAS2)
 RD 2085 - Kasson - Unit 3, spur levee south (KAS3)

General	Operations and Maintenance Manuals	A	A	A				
	Emergency Supplies and Equipment	A	A	A				
	Flood Preparedness and Training	A	A	A				
Levee - Items Affecting PL 84-99 RP Eligibility	Encroachments	M	M	A				
	Closure Structures	NA	NA	NA				
	Slope Stability	A	A	A				
	Erosion/Bank Caving	M	A	A				
	Animal Control	A	A	A				
	Culverts/Discharge Pipes	NA	NA	NA				
	Underseepage Relief Wells/Toe Drainage Systems	M	NA	NA				
Levee Embankments - Other Items	Vegetation Growth	M	A	A				
	Sod Cover	NA	NA	NA				
	Settlement	A	A	A				
	Depressions/Rutting	M	A	M				
	Cracking	A	A	A				
	Riprap Revetments & Bank Protection	NA	NA	NA				
	Revetments other than Riprap	NA	NA	NA				
Flood Damage Reduction Channels	Seepage	A	A	A				
	Vegetation and Obstructions	A	A	A				
	Shoaling	A	A	A				
	Encroachments	A	A	A				
	Erosion	A	A	A				
	Concrete Surfaces	NA	NA	NA				
	Tilting, Sliding, or Settlement of Concrete	NA	NA	NA				
	Foundation of Concrete Structures	NA	NA	NA				
	Slab and Monolith Joints	NA	NA	NA				
	Flap Gates/Flap Valves/Pinch Valves	NA	NA	NA				
Riprap Revetments & Banks	NA	NA	NA					
Revetments other than Riprap	NA	NA	NA					

Legend

A	Acceptable	M	Includes Unacceptable observations not likely to prevent performance in next flood event
M	Minimally Acceptable	U	Serious deficiency noted in past inspection report has not been corrected within the established timeframe
U	Unacceptable	U	Likely prevents performance in next flood event
N/A	Not Applicable		
RP	Rehabilitation Program (Note: flood fight assistance available regardless of eligibility status)		