

CVFPB Meeting August 22, 2014

USACE INSPECTION RESULTS

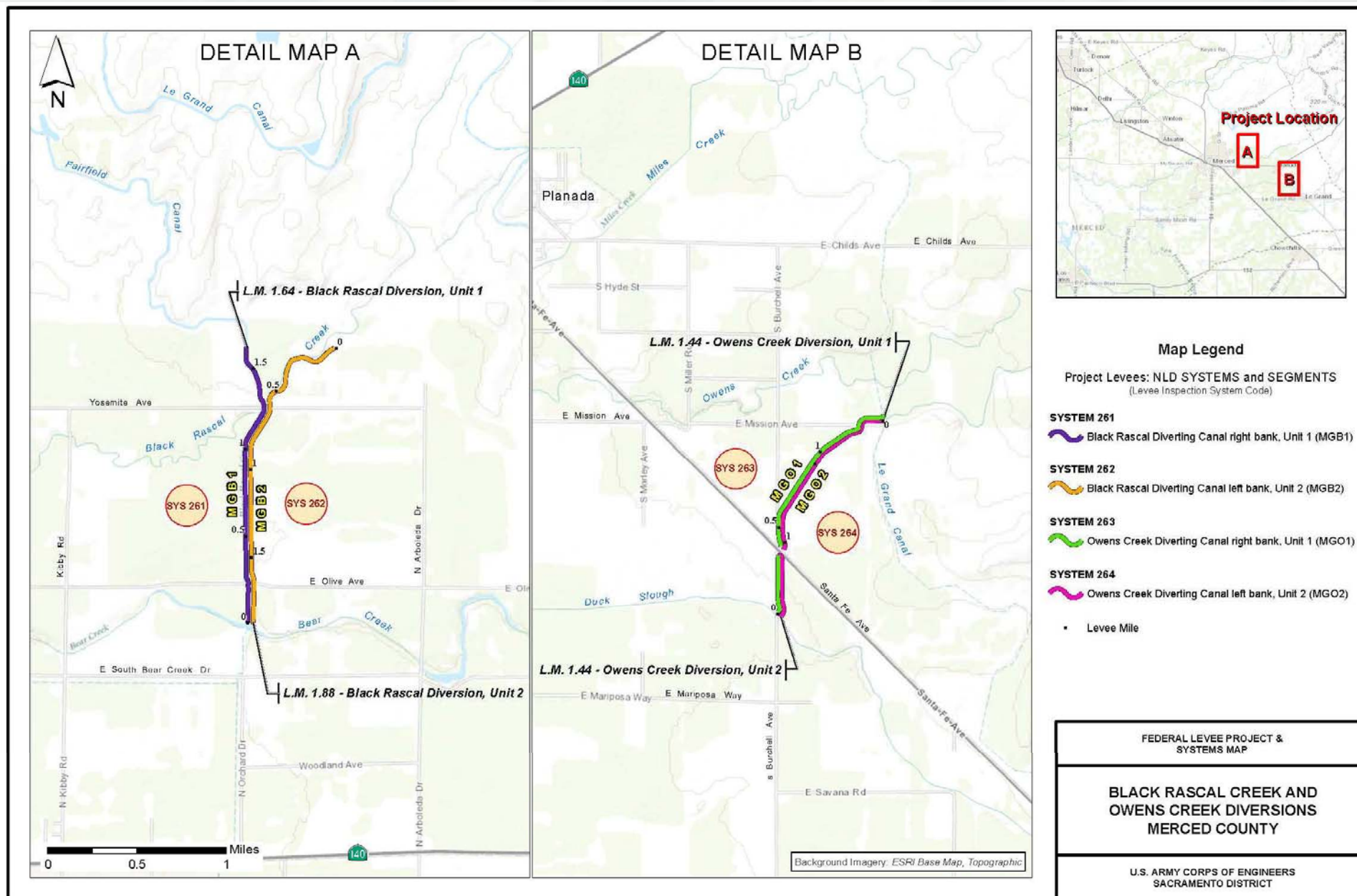
Ryan Larson, P.E.



US Army Corps of Engineers
BUILDING STRONG®



Merced County Streams Group



	System: Merced Stream Group - Black Rascal - Unit 1 Levee System System Rating: Unacceptable Approved SWIF / LOI: No PL 84-99 RP Eligibility: Inactive		Merced County Stream Group - Black Rascal Diverting Canal right bank, Unit 1 (MGBU)	
General	Operations and Maintenance Manuals	A		
	Emergency Supplies and Equipment	A		
	Flood Preparedness and Training	M		
Levee - Items Affecting PL 84-99 RP Eligibility	Encroachments	M		
	Closure Structures	N/A		
	Slope Stability	M		
	Erosion/Bank Caving	A		
	Animal Control	U		
	Culverts/Discharge Pipes	N/A		
	Underseepage Relief Wells/Toe Drainage Systems	N/A		
Levee Embankments - Other Items	Vegetation Growth	M		
	Sod Cover	A		
	Settlement	A		
	Depressions/Rutting	M		
	Cracking	A		
	Riprap Revetments & Bank Protection	N/A		
	Revetments other than Riprap	N/A		
	Seepage	A		
Legend A Acceptable M Minimally Acceptable U Unacceptable N/A Not Applicable RP Rehabilitation Program (Note: flood fight assistance available regardless of eligibility status)		M U U	Includes Unacceptable observations not likely to prevent performance in next flood event Serious deficiency noted in past inspection report has not been corrected within the established timeframe Likely prevents performance in next flood event	

	System: Merced Stream Group - Black Rascal - Unit 2 Levee System System Rating: Unacceptable Approved SWIF / LOI: No PL 84-99 RP Eligibility: Inactive		<div>Merced County Stream Group - Black Rascal Diverting Canal left bank, Unit 2 (MGB2)</div>
General	Operations and Maintenance Manuals	A	
	Emergency Supplies and Equipment	A	
	Flood Preparedness and Training	M	
Levee - Items Affecting PL 84-99 RP Eligibility	Encroachments	U	
	Closure Structures	N/A	
	Slope Stability	M	
	Erosion/Bank Caving	M	
	Animal Control	U	
	Culverts/Discharge Pipes	N/A	
	Underseepage Relief Wells/Toe Drainage Systems	N/A	
Levee Embankments - Other Items	Vegetation Growth	M	
	Sod Cover	M	
	Settlement	M	
	Depressions/Rutting	M	
	Cracking	A	
	Riprap Revetments & Bank Protection	N/A	
	Revetments other than Riprap	N/A	
	Seepage	A	
	Legend A Acceptable M Minimally Acceptable U Unacceptable N/A Not Applicable RP Rehabilitation Program (Note: flood fight assistance available regardless of eligibility status)		<div>M</div> Includes Unacceptable observations not likely to prevent performance in next flood event <div>U</div> Serious deficiency noted in past inspection report has not been corrected within the established timeframe <div>U</div> Likely prevents performance in next flood event

	System: Merced Stream Group - Owens Creek - Unit 1 Levee System System Rating: Unacceptable Approved SWIF / LOI: No PL 84-99 RP Eligibility: Inactive		Merced County Stream Group - Owens Creek Diverging Canal right bank, Unit 1 (MG01)	
General	Operations and Maintenance Manuals	A		
	Emergency Supplies and Equipment	A		
	Flood Preparedness and Training	M		
Levee - Items Affecting PL 84-99 RP Eligibility	Encroachments	U		
	Closure Structures	N/A		
	Slope Stability	A		
	Erosion/Bank Caving	M		
	Animal Control	U		
	Culverts/Discharge Pipes	N/A		
	Underseepage Relief Wells/Toe Drainage Systems	N/A		
Levee Embankments - Other Items	Vegetation Growth	M		
	Sod Cover	A		
	Settlement	A		
	Depressions/Rutting	M		
	Cracking	A		
	Riprap Revetments & Bank Protection	N/A		
	Revetments other than Riprap	N/A		
	Seepage	A		
	Legend <div> <div>A</div> <div>Acceptable</div> </div> <div> <div>M</div> <div>Minimally Acceptable</div> </div> <div> <div>U</div> <div>Unacceptable</div> </div> <div> <div>N/A</div> <div>Not Applicable</div> </div> <div> <div>RP</div> <div>Rehabilitation Program (Note: flood fight assistance available regardless of eligibility status)</div> </div> <div> <div>M</div> <div>Includes Unacceptable observations not likely to prevent performance in next flood event</div> </div> <div> <div>U</div> <div>Serious deficiency noted in past inspection report has not been corrected within the established timeframe</div> </div> <div> <div>U</div> <div>Likely prevents performance in next flood event</div> </div>			

	System: Merced Stream Group - Owens Creek - Unit 2 Levee System System Rating: Unacceptable Approved SWIF / LOI: No PL 84-99 RP Eligibility: Inactive		Merced County Stream Group - Owens Creek Diverting Canal left bank, Unit 2 (MG02)	
General	Operations and Maintenance Manuals	A		
	Emergency Supplies and Equipment	A		
	Flood Preparedness and Training	M		
Levee - Items Affecting PL 84-99 RP Eligibility	Encroachments	U		
	Closure Structures	N/A		
	Slope Stability	M		
	Erosion/Bank Caving	U		
	Animal Control	U		
	Culverts/Discharge Pipes	N/A		
	Underseepage Relief Wells/Toe Drainage Systems	N/A		
Levee Embankments - Other Items	Vegetation Growth	M		
	Sod Cover	M		
	Settlement	M		
	Depressions/Rutting	M		
	Cracking	A		
	Riprap Revetments & Bank Protection	N/A		
	Revetments other than Riprap	N/A		
	Seepage	A		
Legend A Acceptable M Minimally Acceptable U Unacceptable N/A Not Applicable RP Rehabilitation Program (Note: flood fight assistance available regardless of eligibility status)		M Includes Unacceptable observations not likely to prevent performance in next flood event U Serious deficiency noted in past inspection report has not been corrected within the established timeframe U Likely prevents performance in next flood event		

