

# Inspection and Local Maintaining Agency Report

Presentation to the CVFPB

January 10, 2014

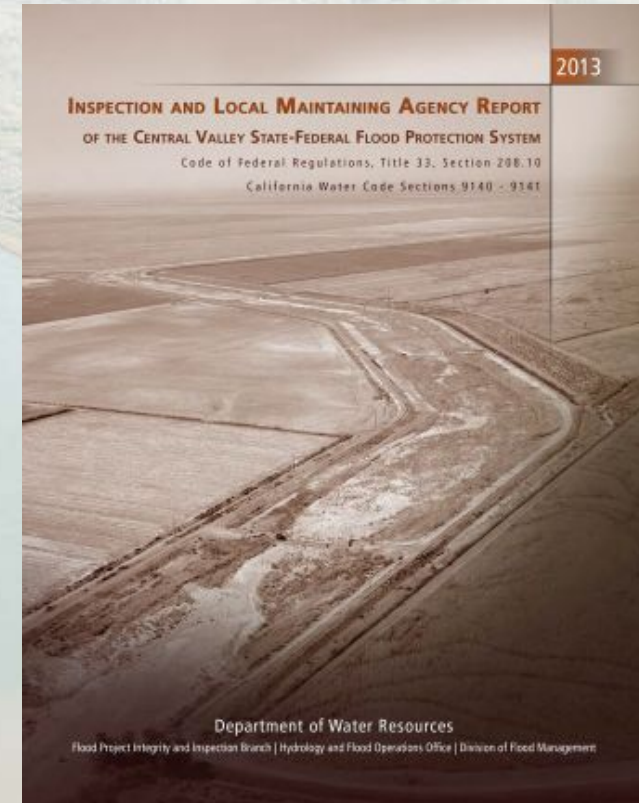
Tasmin Eusuff and David Pesavento

# Agenda

- Report Overview
- LMA Summary Profiles
- Inspection Results
- LMA Reporting Results

# Report Overview

- Combined Report
- Reader's Guide
- LMA Annual Reporting
- DWR Inspections
- Other FPIIB Activities
- LMA Summary Profiles





# LMA Summary Profiles

- Area Name, LMA, County, Contact
- Map, Area Units
- Threat Assessment & Recommendations
- Points of Interest
- DWR Levee Inspection
- DWR Structure & Channel Inspection
- Erosion
- USACE Inspections
- LMA Five Part Reporting

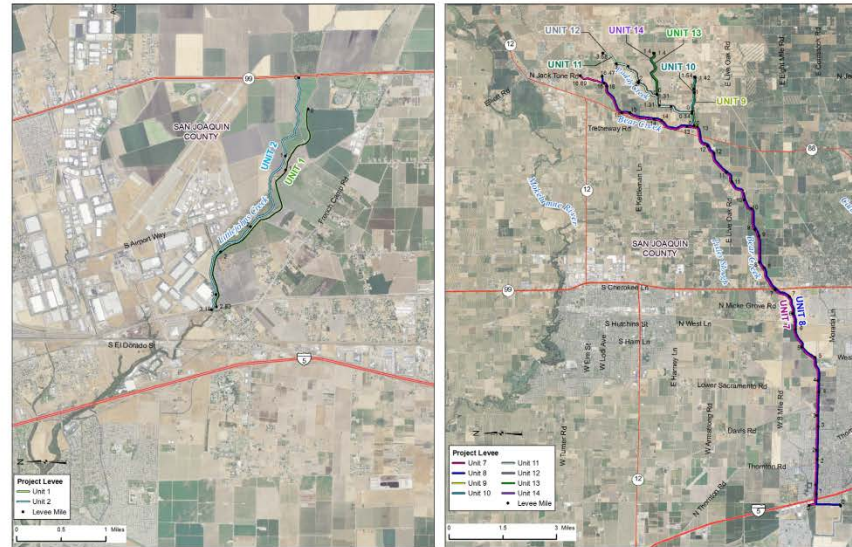
# San Joaquin County Flood Control and Water Conservation District

## San Joaquin County

### Contact

Tom Gau  
Public Works Director  
PO Box 1810  
Stockton CA 95201  
Phone: (209) 953-7617

San Joaquin  
County





# SAN JOAQUIN SYSTEM : San Joaquin County Flood Control and Water Conservation District

LMA Short Name : NA0017		Bank	Unit Length (Miles)
Unit No. 01	Littlejohn Creek	LB	2.87
Unit No. 02	Littlejohn Creek	RB	3.21
Unit No. 06	SPRR Drain	LB	0.50
Unit No. 07	Bear Creek	RB	16.69
Unit No. 08	Bear Creek	LB	16.47
Unit No. 09	Paddy Creek	LB	1.54
Unit No. 10	Paddy Creek	RB	1.42
Unit No. 11	North Paddy Creek	RB	3.56
Unit No. 12	North Paddy Creek	LB	3.53
Unit No. 13	Middle Paddy Creek	LB	1.40
Unit No. 14	Middle Paddy Creek	RB	1.40
Unit No. 15	Mormon Slough	RB	25.62
Unit No. 16	Mormon Slough	LB	24.00
Unit No. 17	Potter Creek	RB	0.86
Unit No. 18	Potter Creek	LB	0.89

San Joaquin  
County

## Threat Assessment & Recommendations

- There is a significant erosion site in this Area that should be monitored.
- The LMA should focus on repairing erosion sites.
- The LMA should enhance its rodent control program.
- The LMA should work with landowners and the CVFPB to control unauthorized encroachments.
- The LMA should ensure that the capacity of the channel as designed and constructed is maintained.
- The LMA should continue to maintain the area at the high level seen during the last Structure inspection.

## DWR Levee Inspection Summary

NA0017		Total LMA Miles		103.96									
		Fall 2012				Fall 2013				Change			
		Overall LMA Rating			M	Overall LMA Rating			M *				
		M Miles	U Miles	M+4U Miles	Thresh. %	M Miles	U Miles	M+4U Miles	Thresh. %	M Miles	U Miles	M+4U Miles	Thresh. %
Rated Item		M Miles	U Miles	M+4U Miles	Thresh. %	M Miles	U Miles	M+4U Miles	Thresh. %	M Miles	U Miles	M+4U Miles	Thresh. %
Earthen Levee													
Vegetation		0.82		0.82	0.79	0.05		0.05	0.05	-0.77		-0.77	-0.74
Trim / Thin Trees		0.03		0.03	0.03	0.03		0.03	0.03				0.00
Encroachments		1.68	0.01	1.72	1.65	0.99		0.99	0.95	-0.69	-0.01	-0.73	-0.70
Animal Control		0.59	0.03	0.71	0.68	0.45	0.03	0.57	0.55	-0.14		-0.14	-0.13
Slope Stability		0.72	0.01	0.76	0.73	0.26		0.26	0.25	-0.46	-0.01	-0.50	-0.48
Erosion / Bank Caving		0.11		0.11	0.11	0.43	0.01	0.47	0.45	0.32	0.01	0.36	0.35
Cracking		0.02		0.02	0.02	0.13		0.13	0.13	0.11		0.11	0.11
Crown Surface / Depressions / Rutting		0.17		0.17	0.16	0.06		0.06	0.06	-0.11		-0.11	-0.11
Interior Drainage & Piping Systems													
Flap Gates		0.01	0.01	0.05	0.05					-0.01	-0.01	-0.05	-0.05
Concrete Floodwalls													
Monolith Joints		0.06		0.06	0.06	0.13		0.13	0.13	0.07		0.07	0.07
Channels													
Vegetation & Obstructions						0.01		0.01	0.01	0.01		0.01	0.01
Supplemental													
DWR Erosion Survey		0.17	1.68	6.89	6.63	1.18	0.75	4.18	4.02	1.01	-0.93	-2.71	-2.61
LMA Totals:		4.38	1.74	11.34	10.91	3.72	0.79	6.88	6.62*	-0.66	-0.95	-4.46	-4.29

\* Overall LMA Threshold Percent is less than 10.00%; however, U Rated Miles are present, so the Overall LMA Rating is M instead of A.

## SAN JOAQUIN SYSTEM : San Joaquin County Flood Control and Water Conservation District

San Joaquin  
County

### DWR Structure Inspection Summary

Structure Name	Overall Rating
Duck Creek Diversion Weir And Control Structure	A
Mormon Slough Pumping Plant No. 1	A
Mormon Slough Pumping Plant No. 2	A
Mormon Slough Pumping Plant No. 3	A

### DWR Channel Inspection Summary

Channel Name	Overall Rating
Duck Creek Diversion Channel	A
North Littlejohn Creek	M
South Littlejohn Creek	M
South Littlejohn Creek North Branch	A

### DWR San Joaquin River Erosion Summary

#### Unit No. 15 Mormon Slough, RB

Site ID	River Mile	Levee Mile Start	Levee Mile End	Issue Type	Status	Rating
NA0017U15RM22.91	22.91	0.41	1.32	River Erosion	Existing Site	M
NA0017U15RM14.49	14.49	8.43	8.43	River Erosion	New Site	M

#### Unit No. 16 Mormon Slough, LB

Site ID	River Mile	Levee Mile Start	Levee Mile End	Issue Type	Status	Rating
NA0017U16RM23.35	23.35	0.13	0.47	River Erosion	Existing Site	U
NA0017U16RM22.74	22.74	0.97	0.99	River Erosion	Existing Site	U
NA0017U16RM22.58	22.58	1.13	1.13	River Erosion	Existing Site	U
NA0017U16RM22.15	22.15	1.59	1.59	River Erosion	Existing Site	M
NA0017U16RM22.01	22.01	1.74	1.75	River Erosion	Existing Site	U
NA0017U16RM21.95	21.95	1.75	1.76	River Erosion	Existing Site	M
NA0017U16RM21.94	21.94	1.77	1.78	River Erosion	Existing Site	M
NA0017U16RM21.05	21.05	1.93	1.95	River Erosion	Existing Site	M
NA0017U16RM20.71	20.71	2.31	2.32	River Erosion	Existing Site	M
NA0017U16RM20.62	20.62	2.37	2.38	River Erosion	Existing Site	U
NA0017U16RM20	20	3.00	3.06	River Erosion	Existing Site	U
NA0017U16RM19.28	19.28	3.78	3.79	River Erosion	Repaired Site	C
NA0017U16RM19.23	19.23	3.84	3.85	River Erosion	Repaired Site	C
NA0017U16RM19.18	19.18	3.89	3.91	River Erosion	Existing Site	M
NA0017U16RM18.69	18.69	4.32	4.34	River Erosion	Existing Site	U
NA0017U16RM17.99	17.99	5.03	5.03	River Erosion	Existing Site	U
NA0017U16RM17.81	17.81	5.52	5.57	River Erosion	Existing Site	M
NA0017U16RM17.27	17.27	5.55	5.57	River Erosion	New Site	U
NA0017U16RM16.27	16.27	6.72	6.91	River Erosion	Existing Site	U
NA0017U16RM10.82	10.82	7.35	7.41	River Erosion	New Site	U
NA0017U16RM14.48	14.48	8.61	8.65	River Erosion	Existing Site	M
NA0017U16RM13.86	13.86	8.99	8.99	River Erosion	Existing Site	M
NA0017U16RM13.85	13.85	9.07	9.07	River Erosion	New Site	U
NA0017U16RM13.72	13.72	9.39	9.41	River Erosion	Existing Site	M
NA0017U16RM13.53	13.53	9.58	9.60	River Erosion	Existing Site	M
NA0017U16RM12.95	12.95	10.16	10.18	River Erosion	Existing Site	M



USACE Inspection Ratings Summary

System Name	Length (Miles)	RIP Status	RIP Date	Rating
Bear Creek - Unit 8, west of I-5	0.85	Inactive	04/23/2012	U
Bear Creek - Units 12 north	0.44	Active	04/23/2012	M
Bear Creek - Units 12 south, 10, and 13	3.67	Active	07/24/2013	M
Bear Creek - Units 7 east	6.54	Active	02/27/2013	M
Bear Creek - Units 7 west and 21	4.19	Inactive	08/21/2012	U
Bear Creek - Units 7, 22, and 23	9.29	Active	02/27/2013	M
Bear Creek - Units 8, 10, and 11	7.25	Active	02/27/2013	M
Bear Creek - Units 8, 24, 26, and 9	5.57	Active	02/27/2013	M
Bear Creek - Units 8, 25, and 27	11.14	Inactive	08/21/2012	U
Littlejohn Creek left bank - Unit 1	2.55	Inactive	01/18/2008	U
Littlejohn Creek right bank - Unit 2	2.14	Inactive	01/18/2008	U
Mormon Slough - Calaveras R right bank - RD 2074	11.68	Inactive	04/17/2012	U
Mormon Slough - Calaveras, Divert Canal left bank	12.75	Inactive	04/17/2012	U
Mormon Slough - Diverting Canal right bank	9.58	Active	02/27/2013	M
Mormon Slough left bank along RR tracks - Unit 16	0.46	Active	10/27/2012	M
Mormon Slough right bank - Unit 15 east	3.64	Active	02/27/2013	M

San Joaquin  
County

DWR Flood System Repair Project Summary

Unit No. 15 Mormon Slough

POI Number	Status	Failure Mode	Location Start	Location End	Bank	Start Latitude	Start Longitude
DWR_NA0017_15_s_ 2012_10	Serious	Erosion	0.41	1.32	Right	38.04660	-121.02158

## SAN JOAQUIN SYSTEM : San Joaquin County Flood Control and Water Conservation District

San Joaquin  
County

### DWR Summary of Local Maintaining Agency Report

**Part 1 Information known to the Local Agency that is relevant to the condition or performance of the Project Levee (or jurisdictional Non-Project Levee)**

The Agency reported that there is no new relevant information on the condition or performance of the Project Levee.

**Part 2 Information identifying known conditions that might impair or compromise the level of flood protection provided by the Project Levee (or jurisdictional Non-Project Levee)**

The Agency reported that there is no new relevant information on impairments or compromising conditions.

**Part 3 A summary of maintenance performed by the Local Agency during the previous fiscal year**

The Agency provided a summary of maintenance activities accomplished for all levee units. Activities include erosion repair, encroachment control, gate repair, inspections, patrolling, roadway grading, rodent baiting and hole grouting, tree thinning and trimming, and vegetation mowing and spraying. The Agency also provided actions taken on inspection items listed by DWR in the inspection report. The actions taken include corrected issues for crown surface repair, encroachment control, erosion repair, levee slope repair, rodent control, tree thinning and trimming, and vegetation control.

**Part 4 A statement of work and estimated cost for operation and maintenance of the Project Levee (or jurisdictional Non-Project Levee) for the current fiscal year, as approved by the Local Agency**

The Agency provided a summary of expenses and maintenance activities planned for all levee units. Expenses include costs of equipment maintenance, erosion repair, gate repair, in-channel sediment and weed removal, minor structure repair, patrolling, roadway grading and repair, rodent control, trash removal, tree trimming and removal, and vegetation control. The reported total estimated cost for the current fiscal year is \$2,062,796.

**Part 5 Any other readily available information contained in the records of the Local Agency relevant to the condition or performance of the Project Levee (or jurisdictional Non-Project Levee), as determined by the CVFPB or DWR**

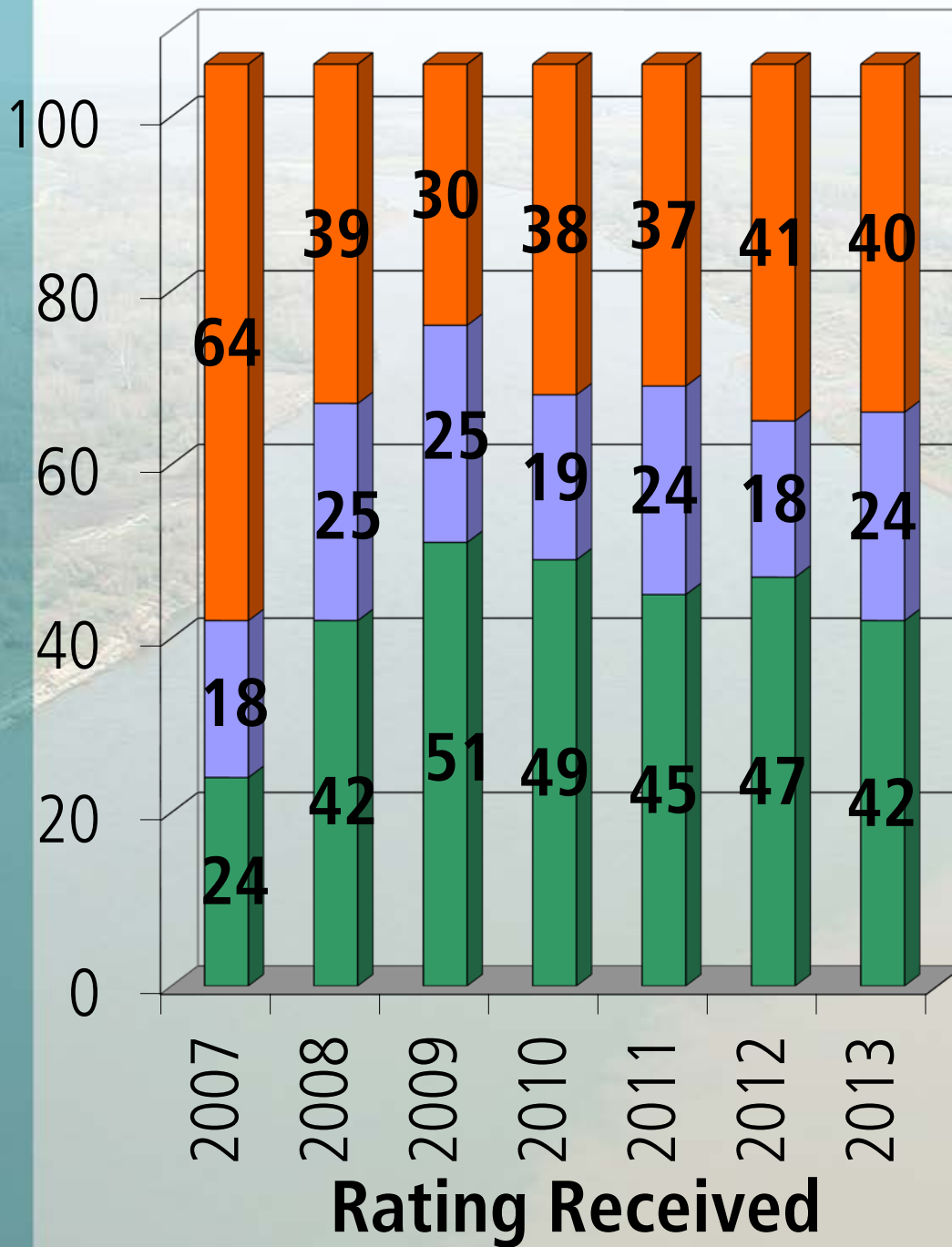
The Agency stated that San Joaquin County has a safety plan in place and receives regular trainings from DWR on flood fighting. The Agency also reported of finding a USACE drawn as-built for a drainage pipe for Unit 13.

# 2013 Inspection Results

	Levees	Channels	Structures	Pumping Plants
Acceptable	42	19	37	11
Minimally Acceptable	24	6	8	2
Unacceptable	40	1	0	0

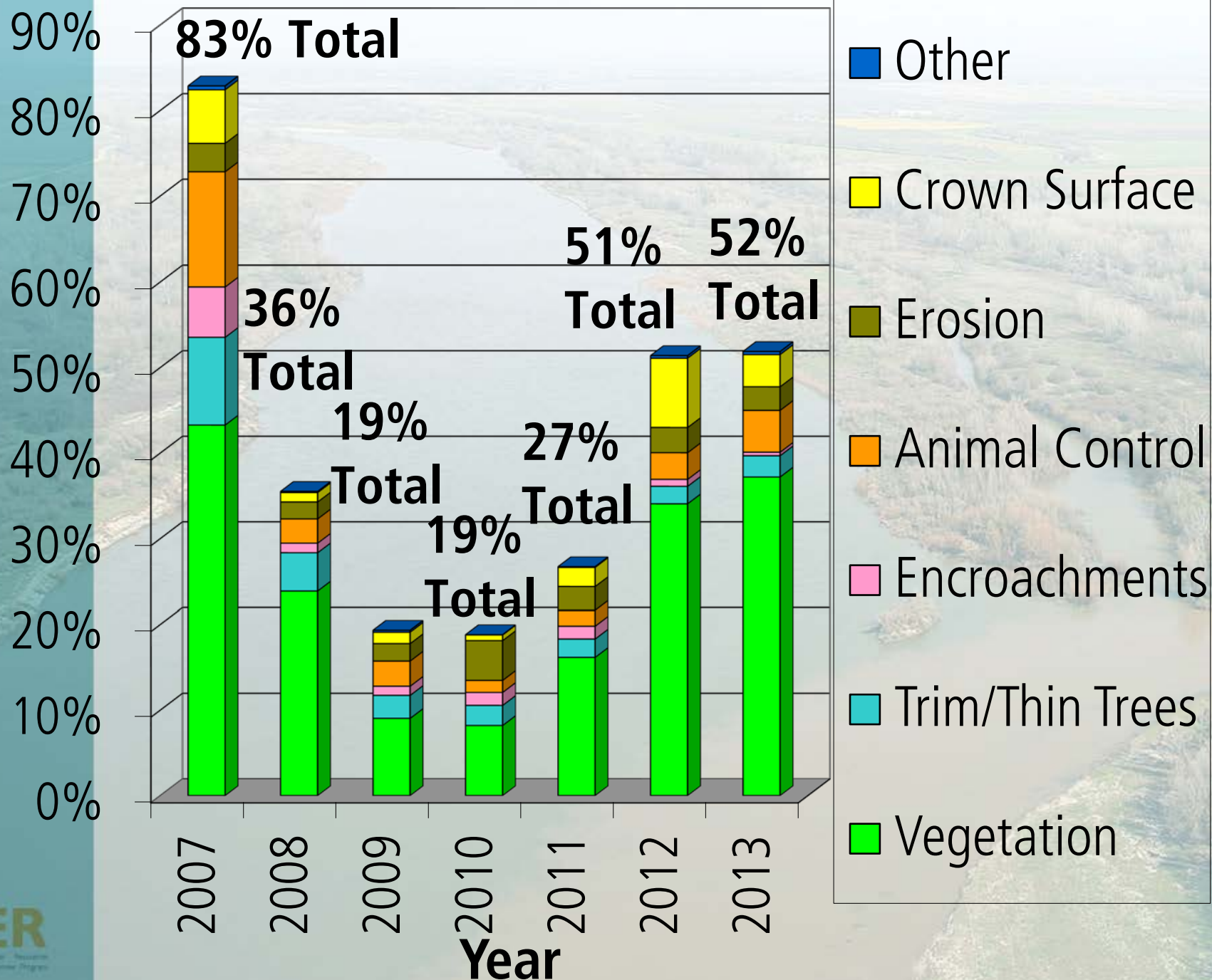


Number of Areas

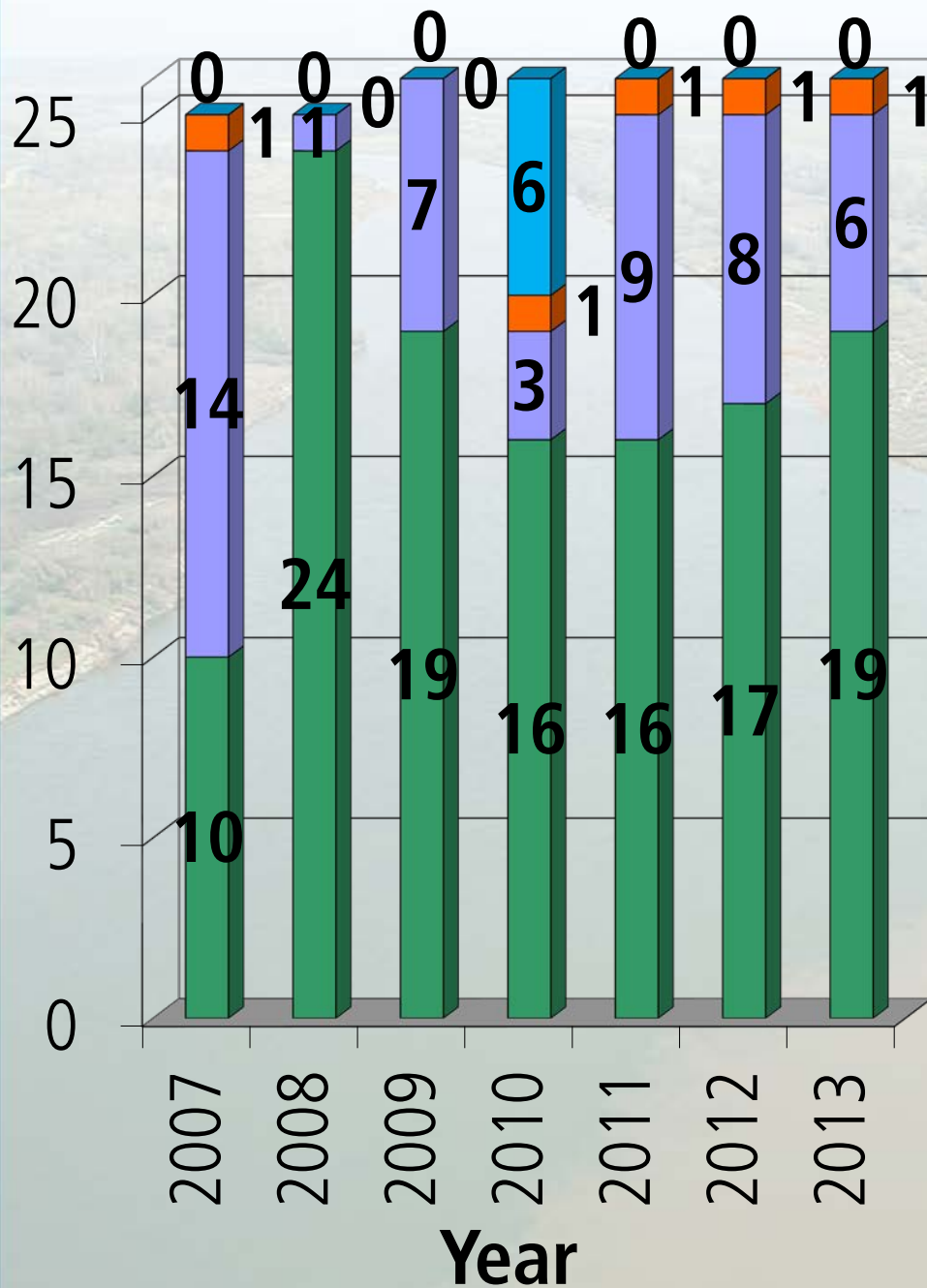


- Unacceptable
- Minimally Acceptable
- Acceptable

# Percent of Mileage Deficient

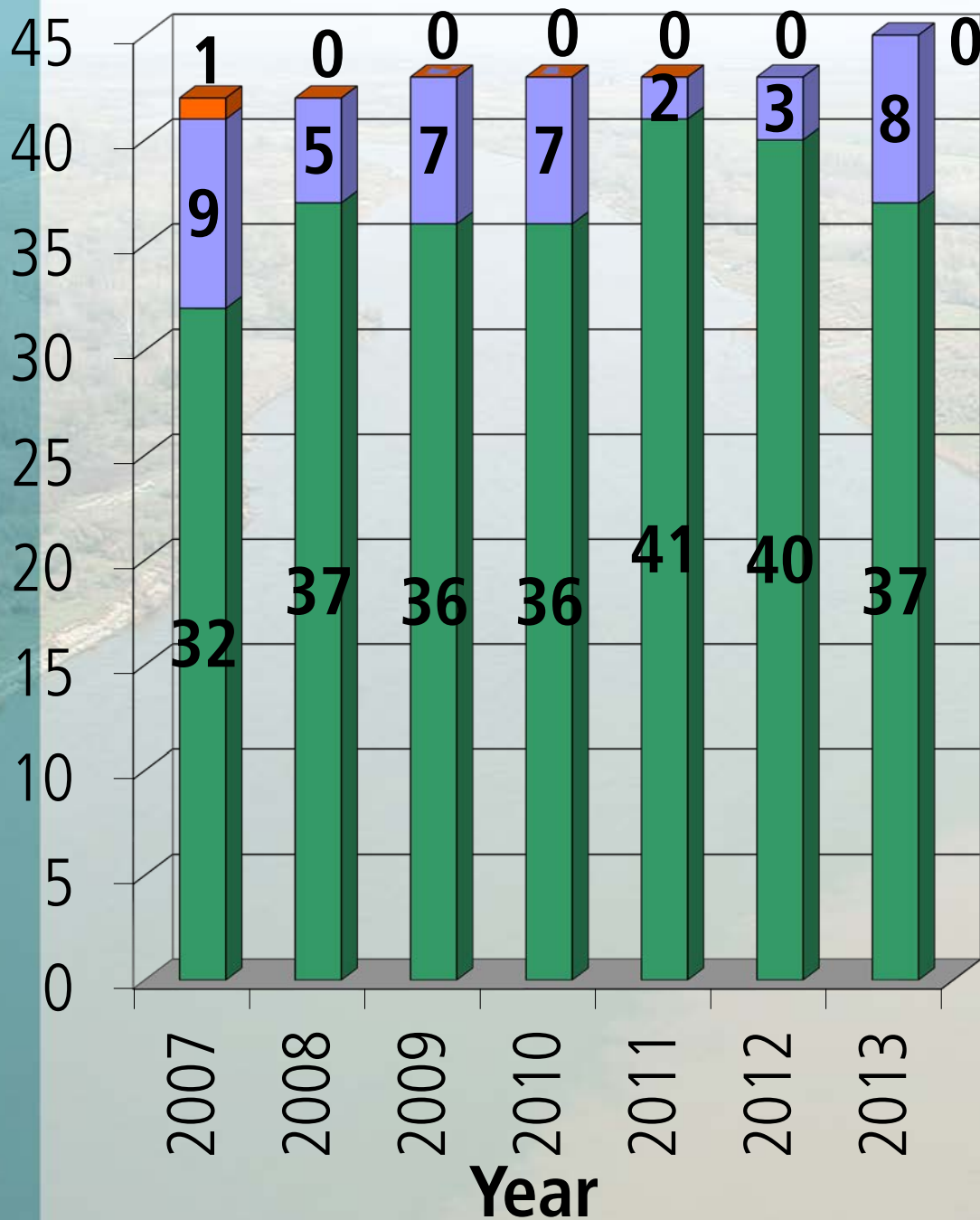


# Number of Channels



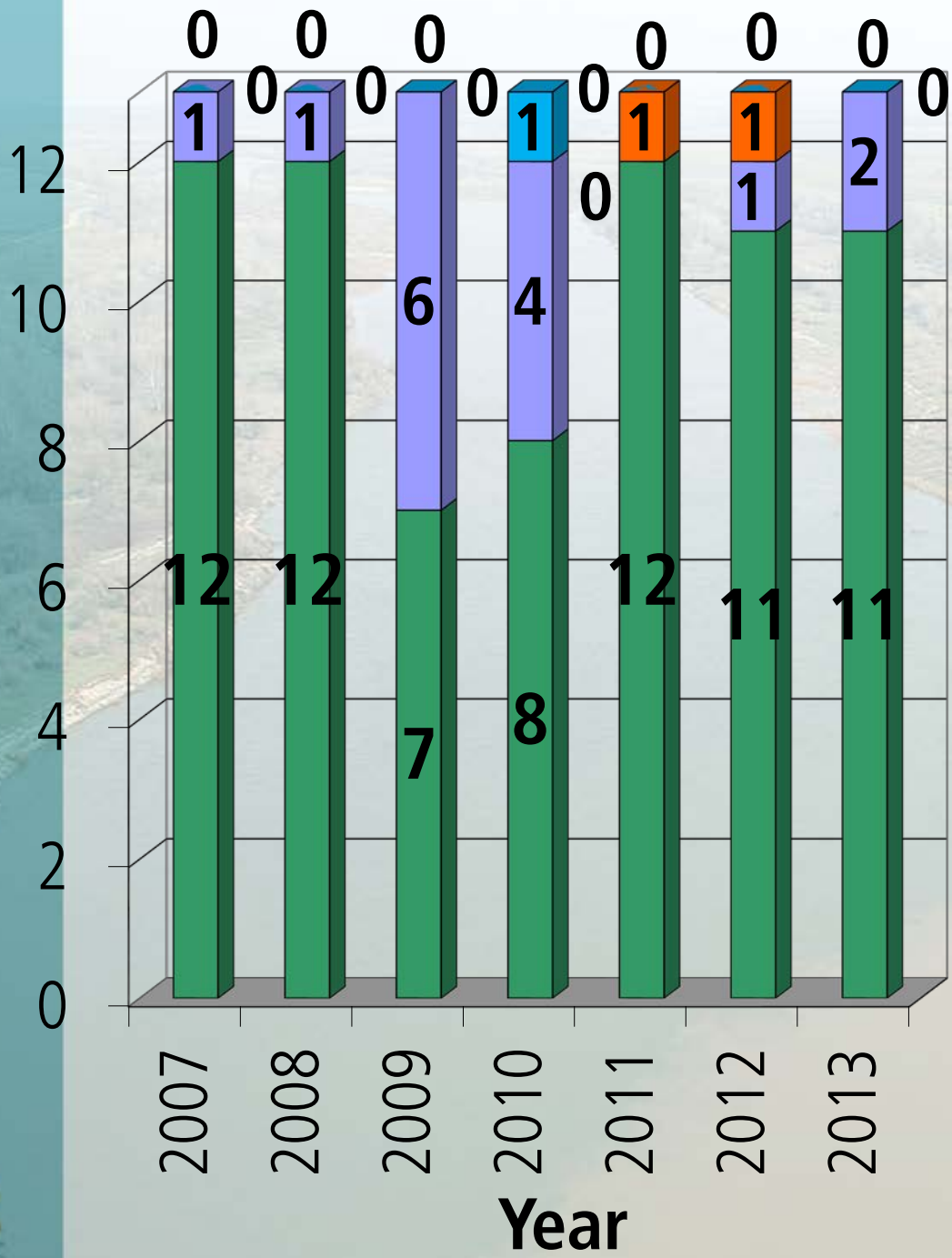


# Number of Structures



- Acceptable
- Minimally Acceptable
- Unacceptable

# Number of Pumping Plants



- Acceptable
- Minimally Acceptable
- Unacceptable
- Not Inspected

# LMA Assessment Briefing

- Reporting Program Background
- 2013 Program Activities
- 2013 Results
- Into the Future



# Reporting History



# Reporting Requirements

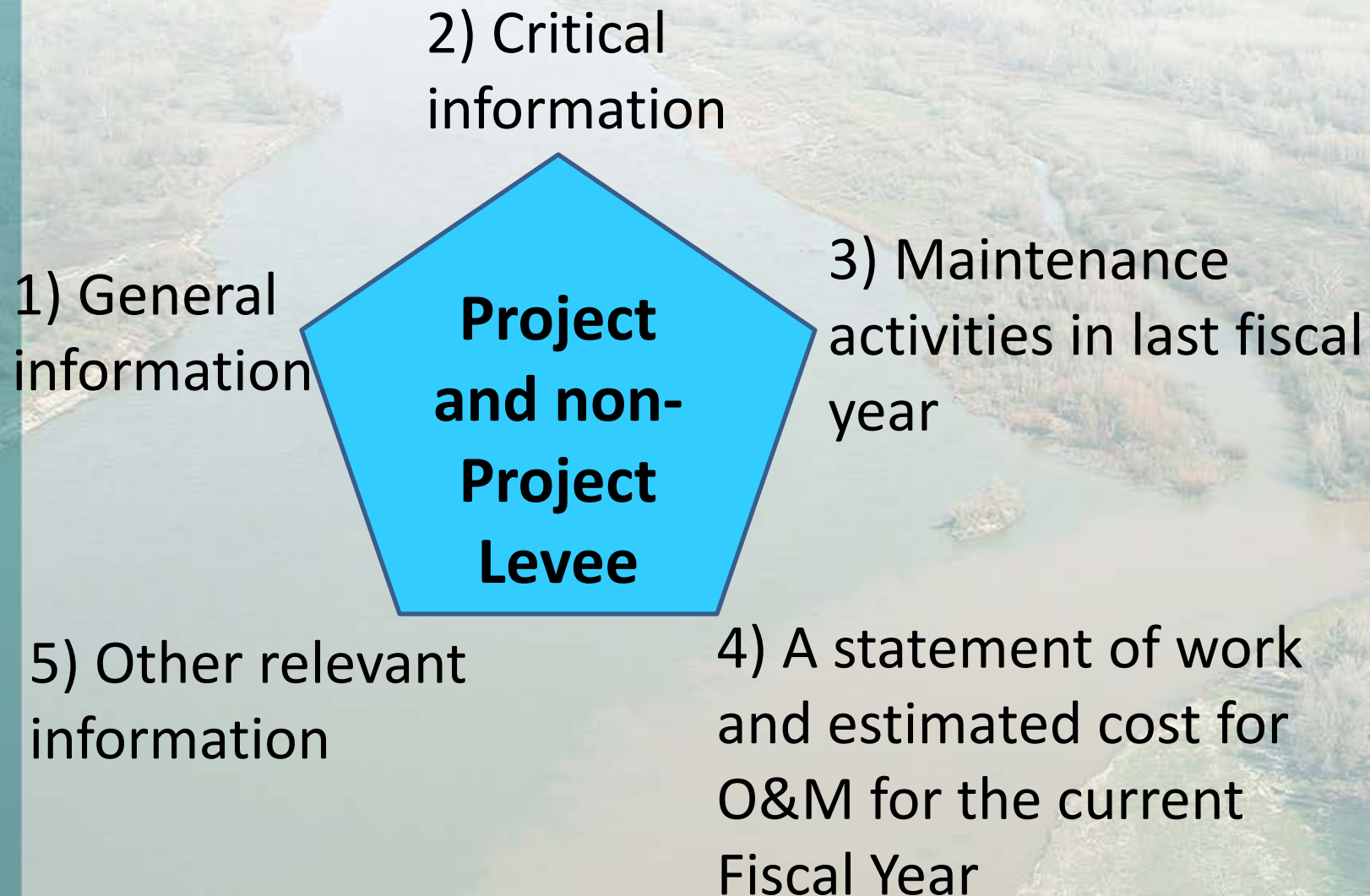
**Local Agency** reports to  
**DWR: (CWC § 9140)**

**DWR** consolidates report to  
**CVFPB: (CWC § 9141)**

September						
Sun	Mon	Tue	Wed	Thu	Fri	Sat
						1
2	3	4	5	6	7	8
9	10	11	12	13	14	15
16	17	18	19	20	21	22
23	24	25	26	27	28	29
30						

December						
Sun	Mon	Tue	Wed	Thu	Fri	Sat
						1
2	3	4	5	6	7	8
9	10	11	12	13	14	15
16	17	18	19	20	21	22
23	24	25	26	27	28	29
30	31					

# What Information is Required?





# Factsheet

## Department of Water Resources

# Form

# Compliance

# Workshop

## Guide, examples

# Electronic Reporting Web Application

<http://cdec.water.ca.gov/lma.html>

**CA.GOV** | DEPARTMENT OF WATER RESOURCES  
California Data Exchange Center

Home Query Tools Precipita FPIIB Login

Most Popular Links

- Executive Summary
- Real-time Data
- Daily Data
- Monthly Data
- Historical Data
- Data Plotter
- Station Search
- Station Locator
- Daily Water Temperatures
- Reports
- Other Related Data Sources
- Contact CDEC Staff

RELATED LINKS

- California Cooperative Snow Surveys
- State Climatologist
- State Meteorologist
- Division of Flood Management
- Department of Water Resources

Welcome to Flood Project Integrity and Inspection Branch (FPIIB)

(Local Maintaining Agency)

Please enter your username

Username:

Password:

Tuesday, January 3, 2012 12:51:05 PM

Copyright © 2008-2010 State of California

Local Maintaining Agency Annual Report - (AD156)

File Edit LMA Annual Report UCIP Delta Administration Window Help

**New Report**

(For both Project and Non-Project Levees)

☐ Hardcopy Report ☒ Project Levees (Default) ☐ Non-Project Levees ☐ Other Levees

American River Flood Control District

Maintained Area: American River Flood Control District

Unit No. 01 Arcade Creek - LB

Levee Unit: Unit No. 01 Arcade Creek - LB (U01)

District Code: NA0001

**American River Flood Control District**

Part 1: 2012 Report Part 1: Information known to the local agency that is relevant to the condition or performance of the project levee.  
1) Select the Condition or Performance Feature of the Project Levee.

Select a Category/Item

Feature/Condition Description

No feature/condition description.

Date / Time

Select of Time 01/03/2012 12:55

Location Description

No location description.

GPS Coordinates/Levee Mile

Latitude: \* N Start End

Longitude: \* W

Levee Mile:

Additional Comments

No comments.

Action

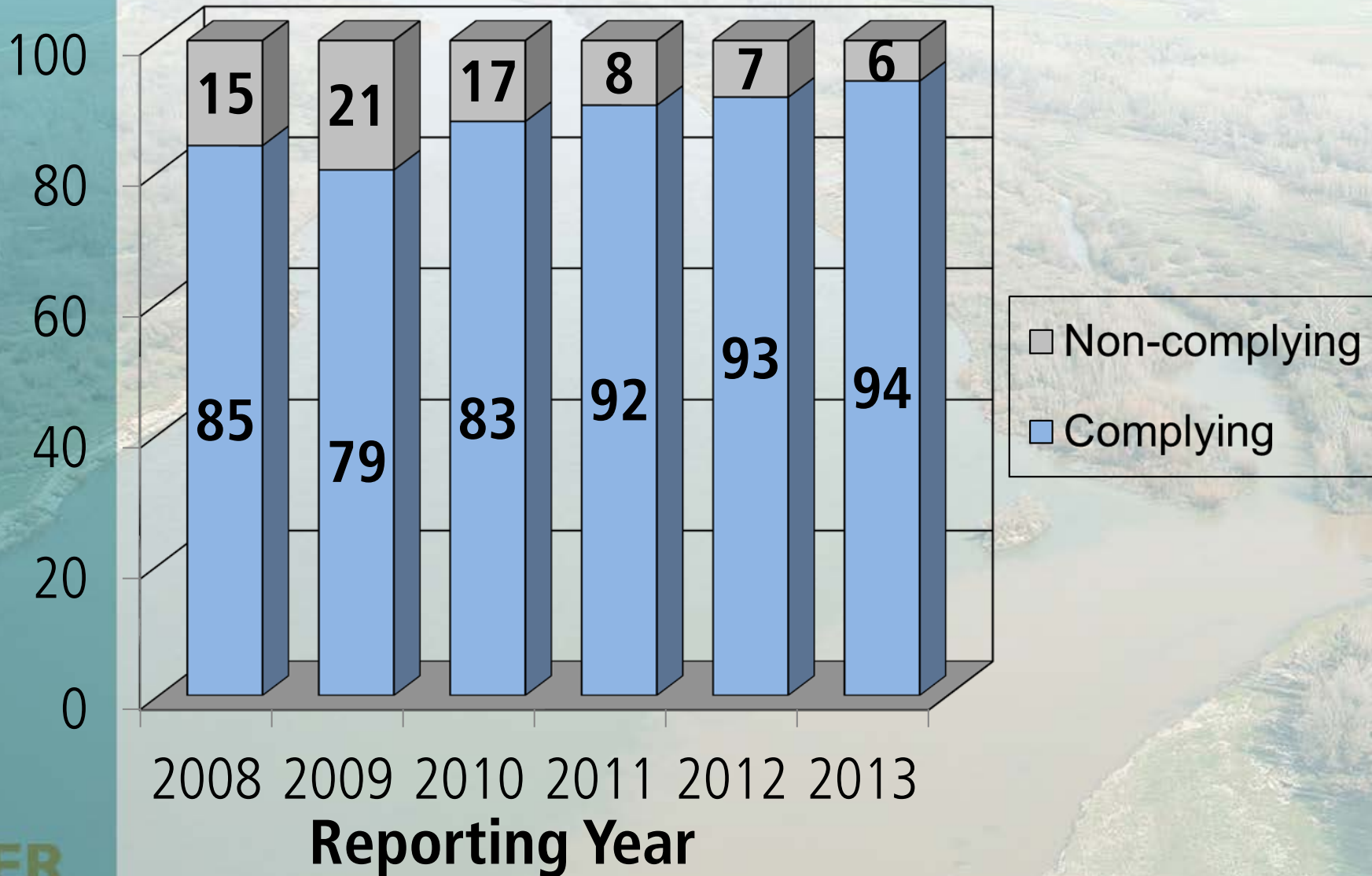
☐ View Submitted Report ☒ Clear Form

Submit Report



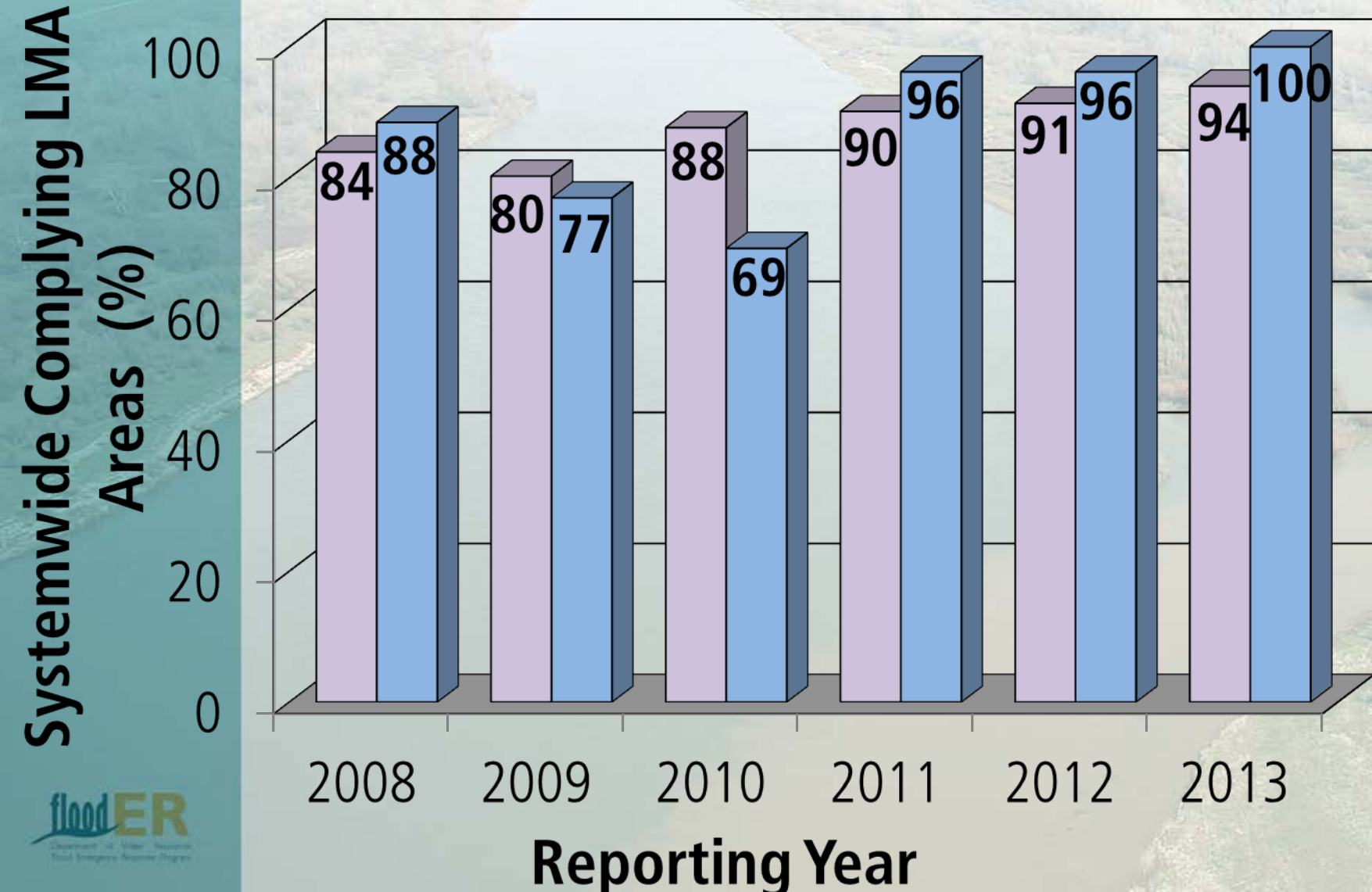
# LMA Reporting Results

Percentage of Total LMA Areas



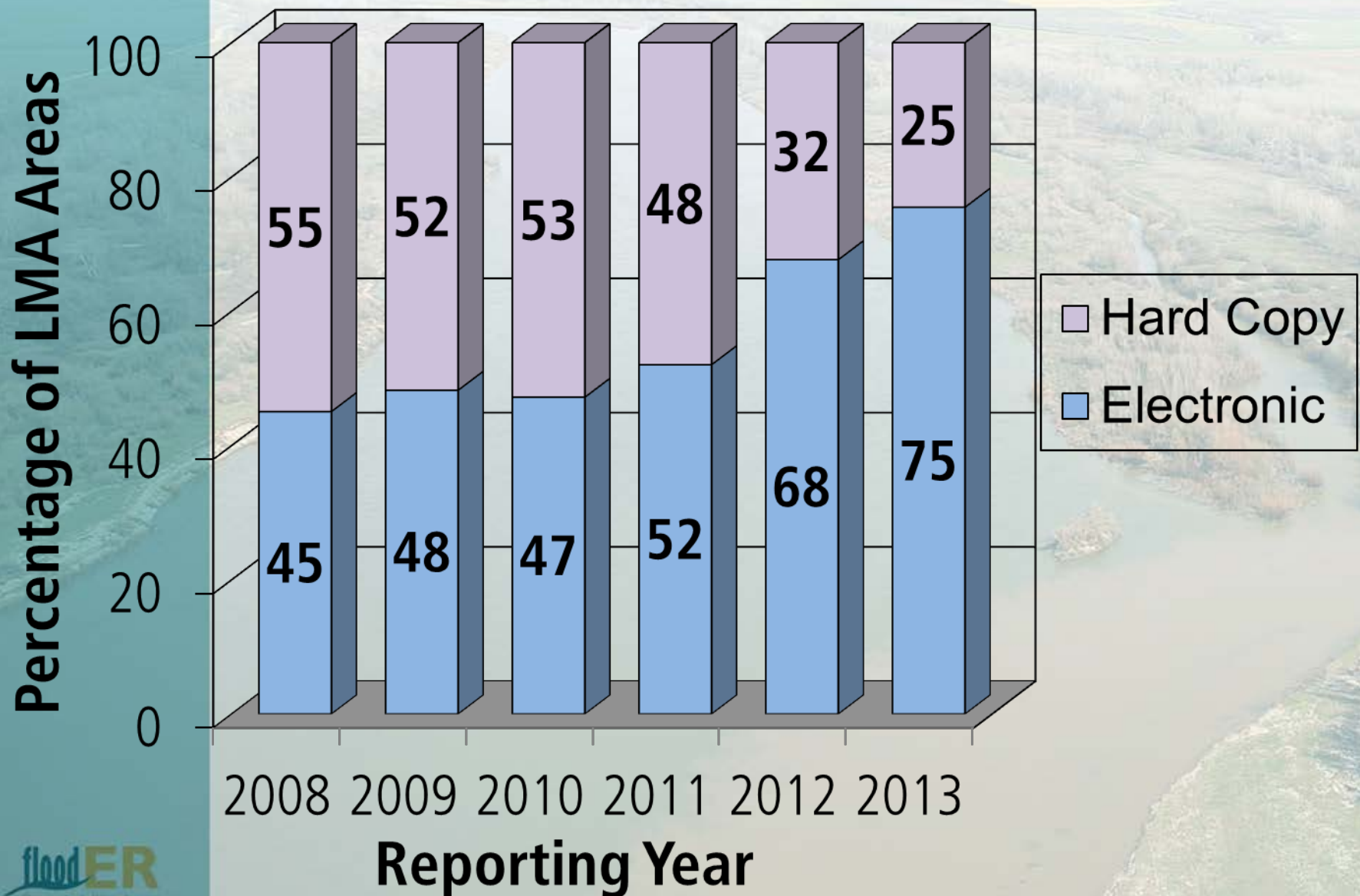
# Systemwide Compliance

■ Sacramento System ■ San Joaquin System



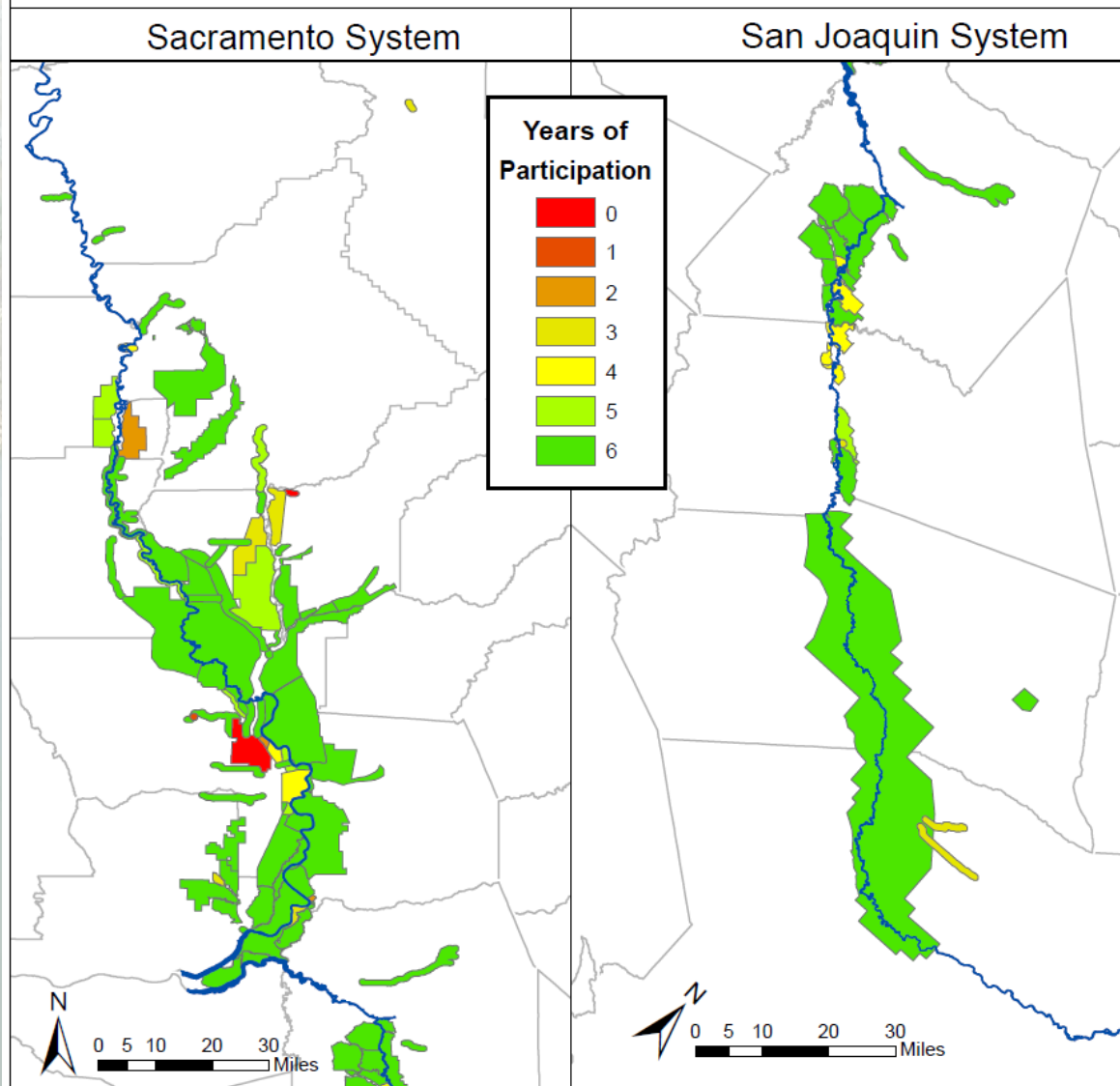


# Reporting Mode

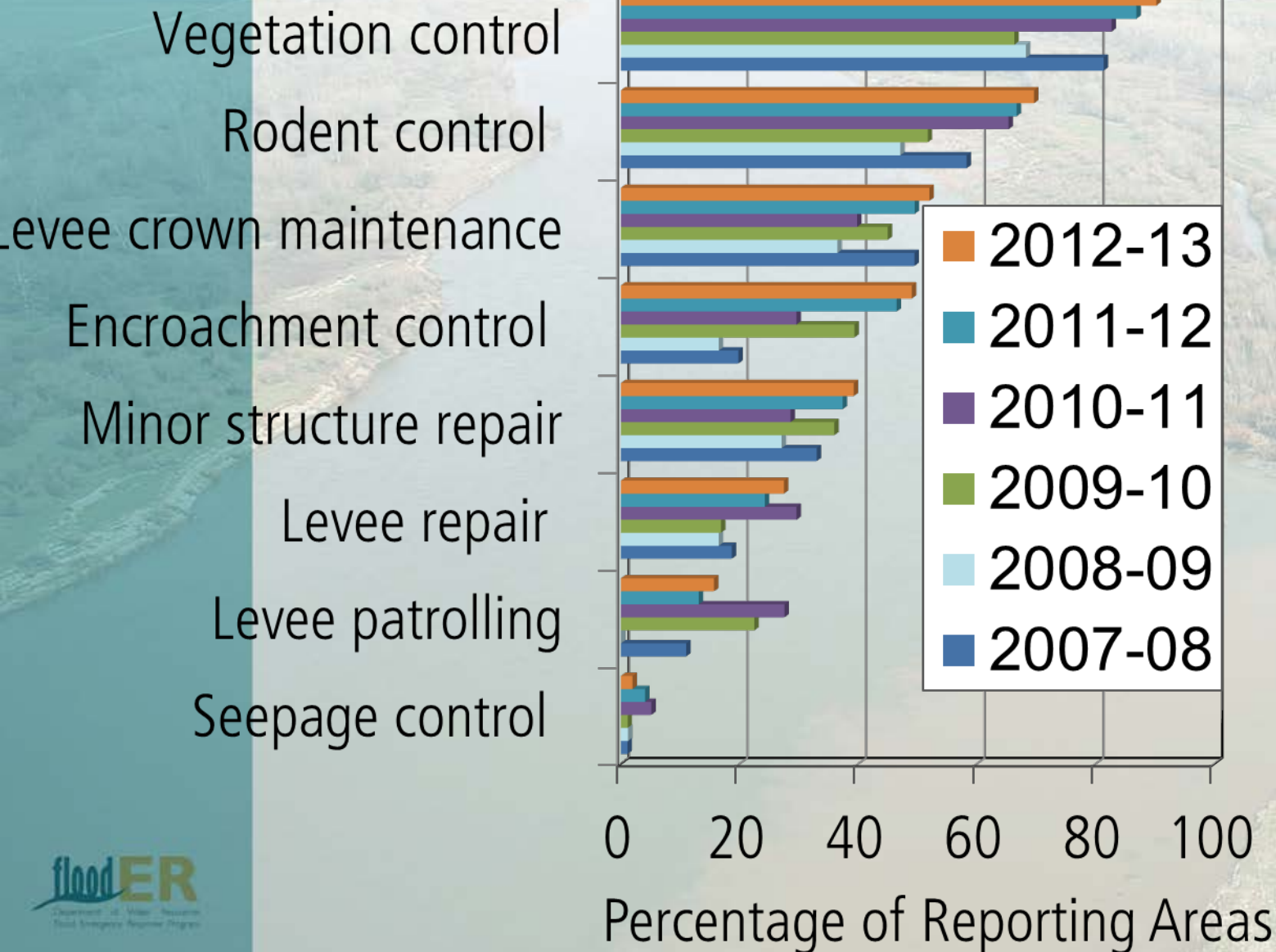


# Reporting History

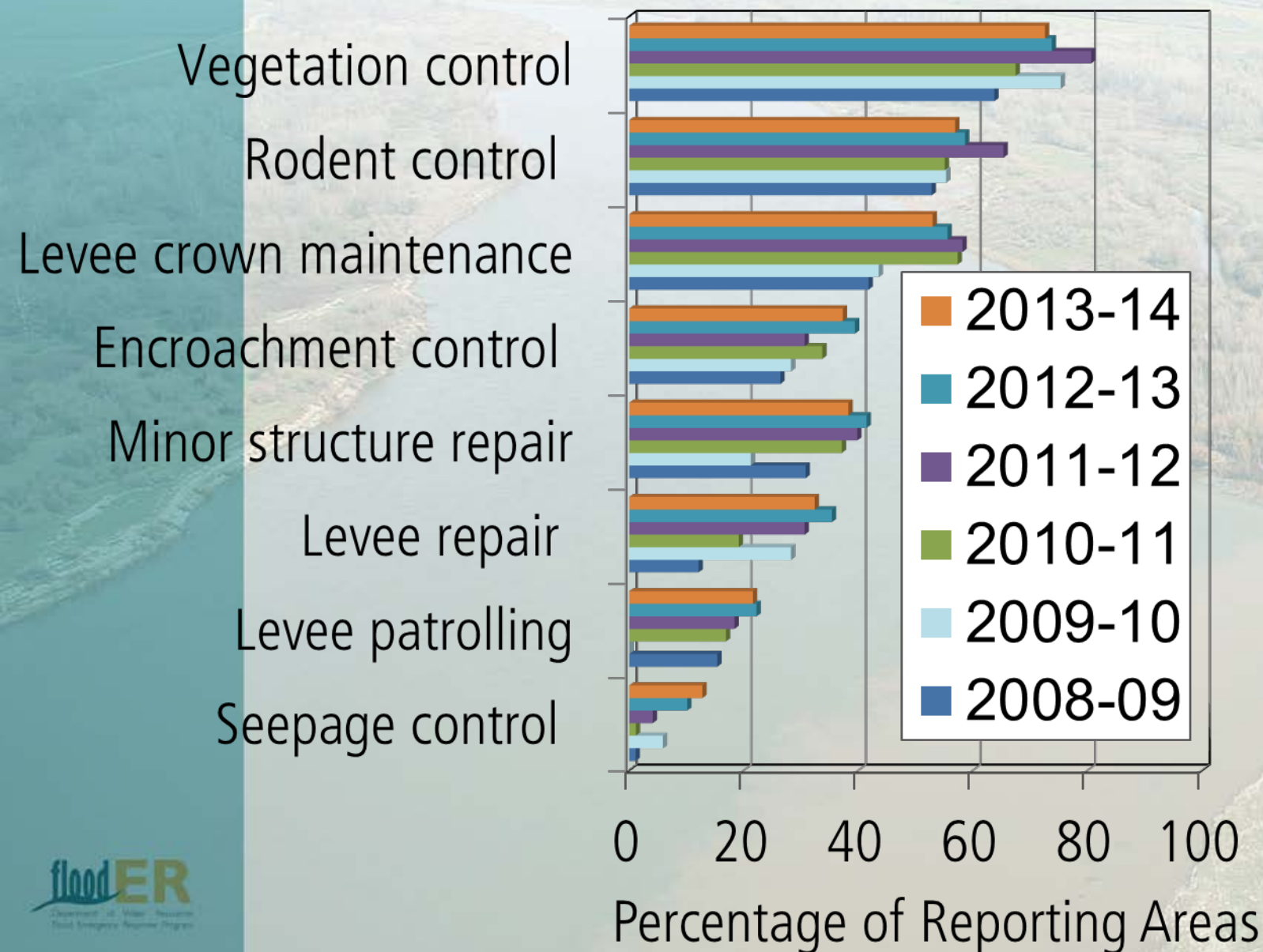
## CWC § 9140 Compliance by Reporting Area



# Performed Key Activities



# Planned Key Activities

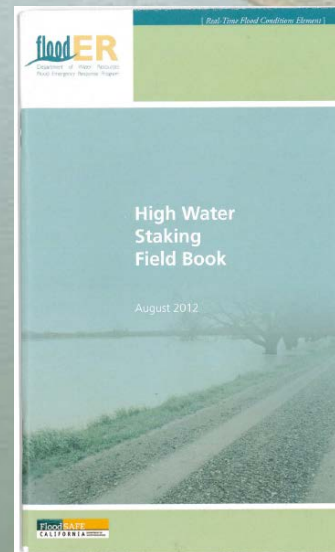
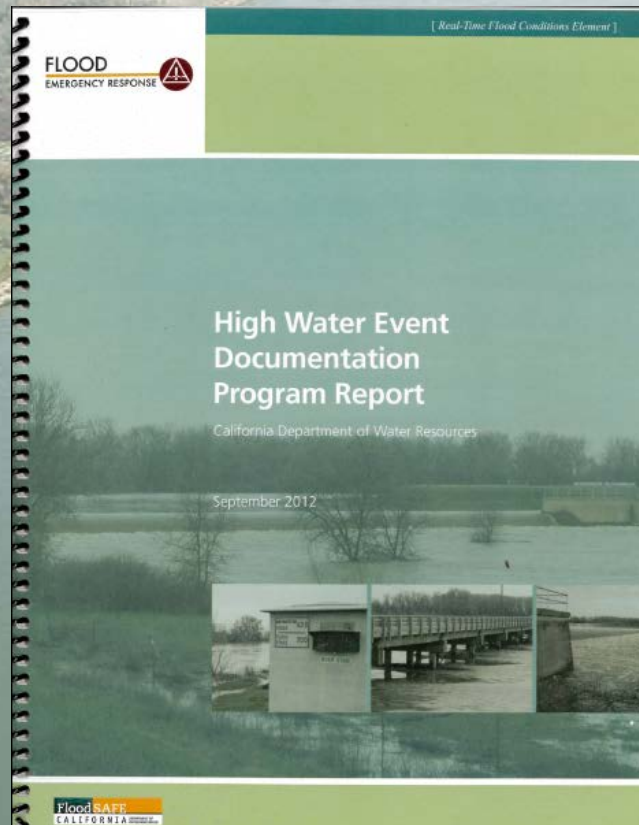




# Into the Future

- Continued Outreach
- Continued CVFPB Assistance in Determining Roles and Responsibilities
- Continued Development of Tools and Methods
- Continued Research into Authorization on Each Feature

# High Water Staking



# Habitually Non-Compliant Areas

- Areas without an LMA: NA0006 (Eastern Honcut Creek), Paradise Dam
- Not Reporting: RD 2035 (Conway Ranch)
- Not Reporting Regularly: RD 827 (Elkhorn), NA0021 (Yolo County Public Works; “Huffs Corner”)



# Habitually Non-Compliant Areas

- Levee Maintenance: MA 0017, NA0006 (Eastern Honcut Creek), NA0011 (Madera County FCWCA), NA0013 (Merced County Stream Group), NA0014 (M&T Ranch), NA0020 (West Interceptor Canal), NA0021 (Yolo County Public Works), RD0349, RD0501, RD0524, RD0536, RD0556, RD0563, RD0765, RD0999, RD1602, RD2089, RD2101, RD2104, ST0006 (Nelson Bend)



2013

**INSPECTION AND LOCAL MAINTAINING AGENCY REPORT  
OF THE CENTRAL VALLEY STATE-FEDERAL FLOOD PROTECTION SYSTEM**

Code of Federal Regulations, Title 33, Section 208.10

California Water Code Sections 9140 - 9141

# Questions?

Department of Water Resources

Flood Project Integrity and Inspection Branch | Hydrology and Flood Operations Office | Division of Flood Management