

CVFPB Meeting March 22, 2013

USACE INSPECTION RESULTS

Meegan G Nagy, PE
Levee Safety Program Manager

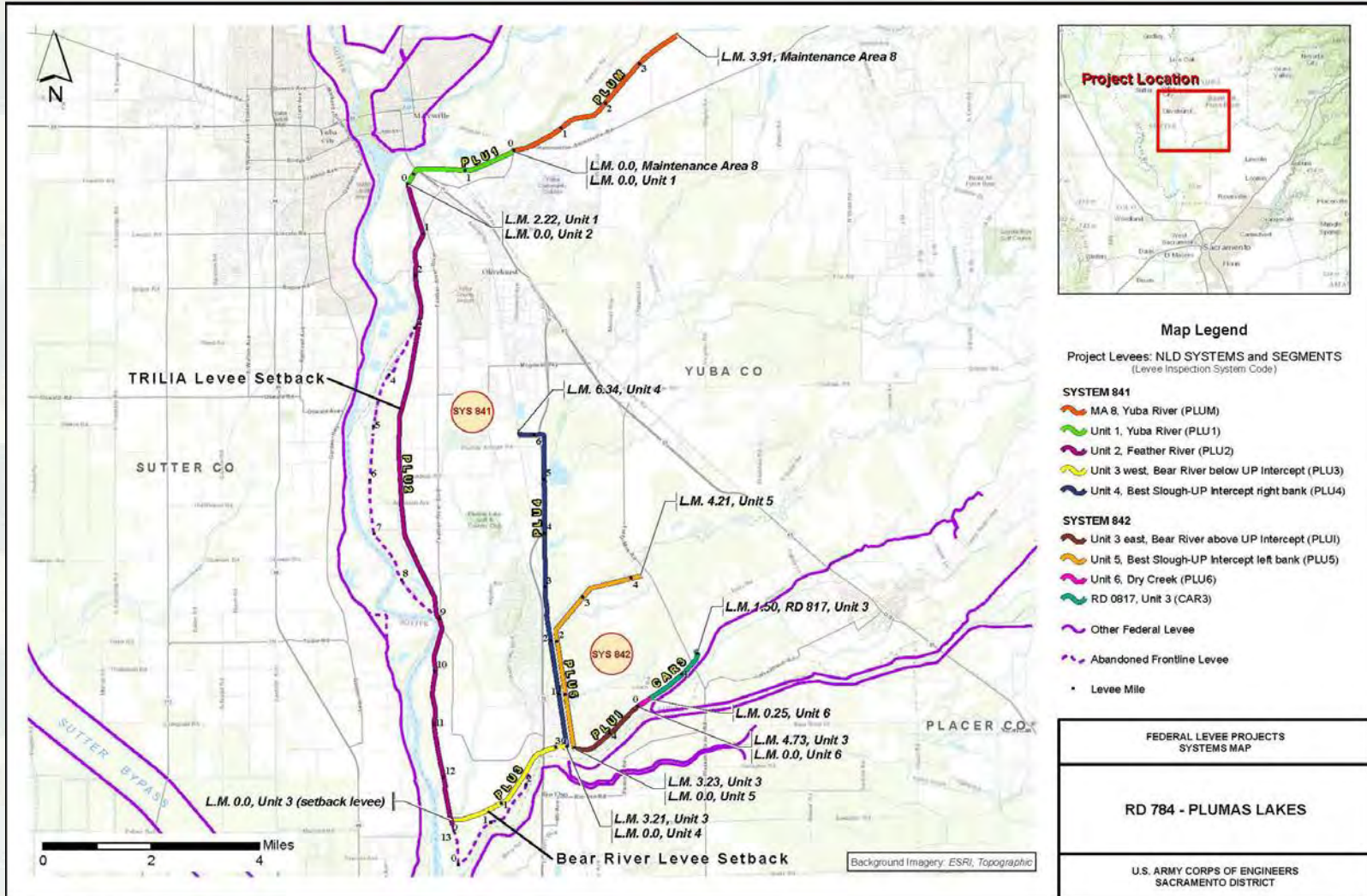


®

US Army Corps of Engineers
BUILDING STRONG®



RD 784 and 817

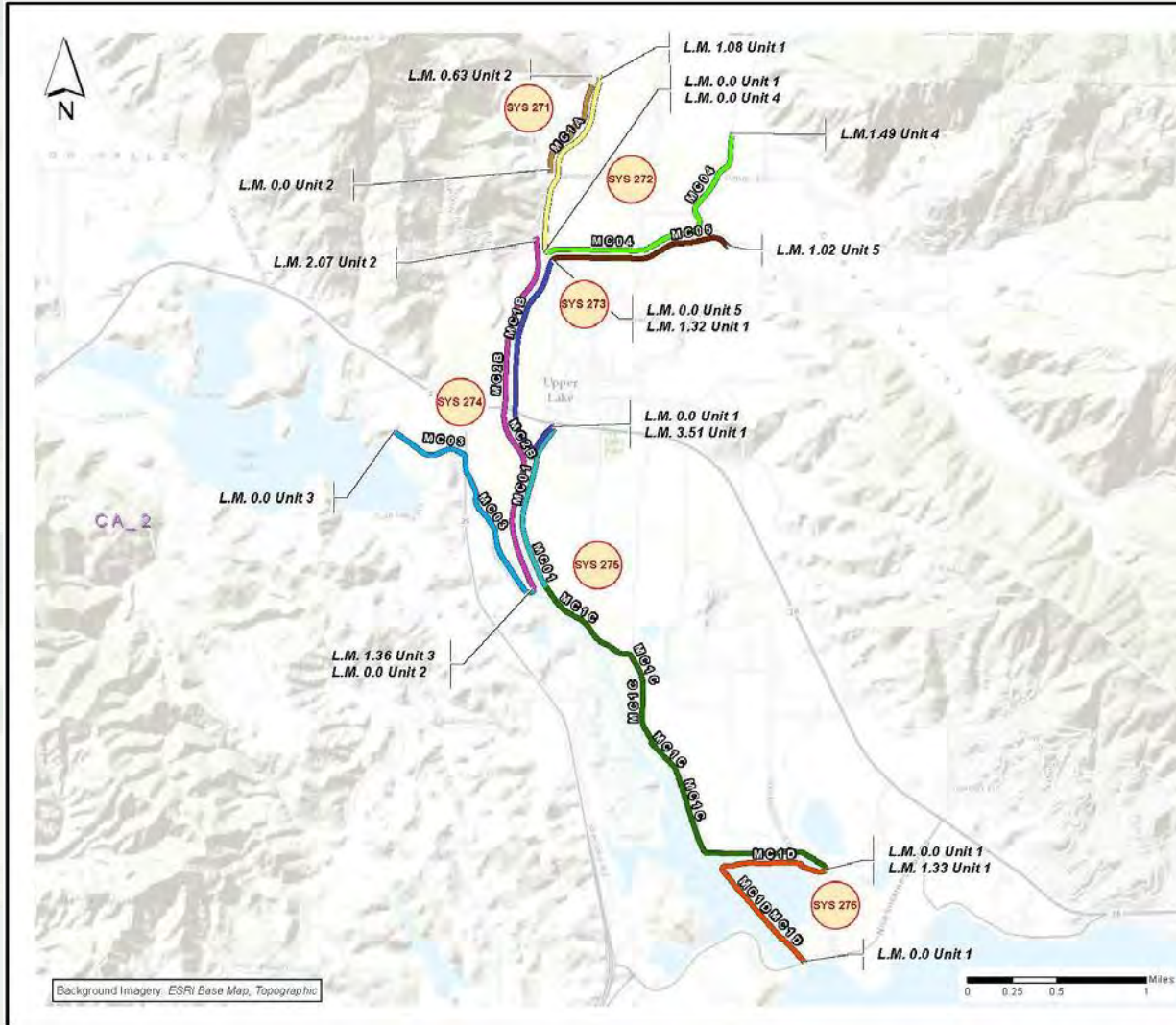


RD 784 Best Slough and Dry Creek

RD 0784 - Best Slough and Dry Creek Unacceptable - Inactive				Unit 3 East Bear River above UP Inter (PLU14)	Unit 5, Bear Slough UP left bank (PLU15)	Unit 6, Dry Creek (PLU6)					
General Items											
Operations and Maintenance Manuals	A	A	A								
Emergency Supplies and Equipment	A	A	A								
Flood Preparedness and Training	A	A	M								
Levee Embankment Items											
Vegetation Growth	U	U	U								
Sod Cover	A	A	M								
Encroachments	U	U	U								
Closure Structures	N/A	N/A	N/A								
Slope Stability	M	M	A								
Erosion/Bank Caving	U	U	M								
Settlement	M	M	M								
Depressions/Rutting	U	U	U								
Cracking	A	A	A								
Animal Control	U	M	U								
Culverts/Discharge Pipes	N/A	N/A	N/A								
Riprap Revetments & Bank Protection	N/A	N/A	N/A								
Revetments other than Riprap	N/A	N/A	N/A								
Underseepage Relief Wells/Toe Drainage Systems	N/A	N/A	N/A								
Seepage	A	A	A								
Segment & System Ratings/PL 84-99 Eligibility							Legend				
Likely Prevents Performance in Next Flood Event							A	Acceptable			
Serious deficiency noted in past inspections has not been corrected within the established timeframe							M	Minimally Acceptable			
Not Likely to Prevent Performance in Next Flood Event							U	Unacceptable			
							N/A	Not Applicable			
								4/18/2011			
								Rev - 8/10/2012			
The lowest rating is used to determine the overall segment & system ratings and PL 84-99 Rehabilitation Eligibility											



Middle Creek Systems Map



Map Legend

Project Levees: NLD SYSTEMS and SEGMENTS
(Levee Inspection System Code)

SPK Levees - SYS 271

SPK Levees - SYS 272

Middle Creek - Lake County - Unit 4, Alley Creek right bank
Unit 1 - Middle Creek north, L bank (MC1A)

SPK Levees - SYS 273

Unit 1 - Middle Creek L bank above Clover Creek (MC1B)
Unit 5 - Alley Creek L bank (MC05)

SPK Levees - SYS 274

Unit 2 - Middle Creek R bank above Scotts Creek (MC2B)
Unit 3 - Middle Creek Scotts Creek L bank (MC03)

SPK Levees - SYS 275

Middle Creek - Lake County - MA 17 (MC1C)
Unit 1 - Middle Creek L bank below Clover Creek (MC01)

SPK Levees - SYS 276

Middle Creek - Lake County - MA 17 (MC1D)

FEDERAL LEVEE PROJECTS
LOCATION MAP

MIDDLE CREEK
LAKE COUNTY

U.S. ARMY CORPS OF ENGINEERS
SACRAMENTO DISTRICT



BUILDING STRONG®

Middle Creek – Unit 1 at Clear Lake

System
Middle Creek Left Bank - Unit 1 at
Clear Lake
Unacceptable - Inactive

Middle Creek- Lake Co- U 1 left
 bank at Clear Lake (MC-1D)

General	Operations and Maintenance Manuals	A								
	Emergency Supplies and Equipment	A								
	Flood Preparedness and Training	A								
Levee Embankments	Unwanted Vegetation Growth	U								
	Sod Cover	NA								
	Encroachments	U								
	Closure Structures	NA								
	Slope Stability	A								
	Erosion/Bank Caving	A								
	Settlement	U								
	Depressions/Rutting	M								
	Cracking	A								
	Animal Control	A								
	Culverts/Discharge Pipes	NA								
	Riprap Revetments & Bank Protection	NA								
	Revetments other than Riprap	NA								
	Underseepage Relief Wells/Toe Drainage Systems	NA								
	Seepage	A								





Middle Creek – Unit 1 North

		System Middle Creek Left Bank – Unit 1 North Unacceptable - Inactive										
		Middle Creek- Lake Co- U 1 north left bank (MC1A)	Middle Creek – Lake Co - U 4 Alley Creek right bank (MC04)									
General	Operations and Maintenance Manuals	A	A									
	Emergency Supplies and Equipment	A	A									
	Flood Preparedness and Training	A	A									
Levee Embankments	Unwanted Vegetation Growth	U	U									
	Sod Cover	NA	NA									
	Encroachments	U	U									
	Closure Structures	NA	NA									
	Slope Stability	A	A									
	Erosion/Bank Caving	A	A									
	Settlement	A	A									
	Depressions/Rutting	M	M									
	Cracking	A	A									
	Animal Control	A	A									
	Culverts/Discharge Pipes	NA	NA									
	Riprap Revetments & Bank Protection	NA	NA									
	Revetments other than Riprap	NA	NA									
	Underseepage Relief Wells/Toe Drainage Systems	NA	NA									
Seepage	A	A										





Middle Creek – Unit 1 South

System		Middle Creek Lake Co- U1 left bank below Clover Creek (MC10)										
Middle Creek Left Bank - Unit 1 South		Minimally Acceptable - Active										
General	Operations and Maintenance Manuals	A										
	Emergency Supplies and Equipment	A										
	Flood Preparedness and Training	A										
Levee Embankments	Unwanted Vegetation Growth	U										
	Sod Cover	NA										
	Encroachments	U										
	Closure Structures	NA										
	Slope Stability	A										
	Erosion/Bank Caving	A										
	Settlement	A										
	Depressions/Rutting	A										
	Cracking	M										
	Animal Control	A										
	Culverts/Discharge Pipes	U										
	Riprap Revetments & Bank Protection	NA										
	Revetments other than Riprap	NA										
	Underseepage Relief Wells/Toe Drainage Systems	NA										
	Seepage	A										
	Pump Stations	Pump Stations Operation, Maintenance, Inspection Records	U									
		Pump Station O&M Equipment Manuals	U									
Safety Compliance		M										
Communications		M										
Plant Building		M										
Fencing and Gates		A										
Pumps		not inspected										
Motors, Engines, Fans, Gear Reducers, etc.		not inspected										
Sumps/Wet well		not inspected										
Mechanical Operating Trash Rakes		NA										
Non-Mechanical Operation Trash Rakes		A										
Fuel System for Pump Engines		NA										
Power Source		not inspected										
Electrical Systems		not inspected										
Megger Testing		U										
Enclosures, Panels, Conduit and Ducts		not inspected										
Intake and Discharge Pipelines		not inspected										
Sluice/ Slide Gates		U										
Flap Gates/Flap Valves/Pinch Valves		not inspected										
Cranes	NA											
Other Metallic Items	M											
Likely to Prevent Performance in Next Flood Event/Inactive												
Serious deficiency noted in past inspections has not been corrected within the established timeframe												
Not Likely to Prevent Performance in Next Flood Event/Active												
The worst rating is used to determine the overall segment & system ratings and PL 84-99 Eligibility												
		Legend A Acceptable M Minimally Acceptable U Unacceptable N/A Not Applicable										



LDING STRONG®

Middle Creek – Unit 5 and part of 1

System Middle Creek Left Bank - Unit 5 and part of 1 Unacceptable - Inactive		Middle Creek- Lake Co- U 1 left brk above Clover C (MC1B) Middle Creek - Lake Co - U 5 Alley Creek left bank (MC05)								
General	Operations and Maintenance Manuals	A	A							
	Emergency Supplies and Equipment	A	A							
	Flood Preparedness and Training	A	A							
Levee Embankments	Unwanted Vegetation Growth	U	U							
	Sod Cover	NA	NA							
	Encroachments	U	U							
	Closure Structures	NA	NA							
	Slope Stability	A	A							
	Erosion/Bank Caving	A	A							
	Settlement	A	M							
	Depressions/Rutting	M	M							
	Cracking	A	A							
	Animal Control	A	M							
	Culverts/Discharge Pipes	NA	NA							
	Riprap Revetments & Bank Protection	NA	NA							
	Revetments other than Riprap	NA	NA							
	Underseepage Relief Wells/Toe Drainage Systems	NA	NA							
Seepage	A	A								





BUILDING STRONG®

Middle Creek – Unit 2

System Middle Creek Right Bank - Unit 2 Unacceptable - Inactive		Middle Creek- Lake Co- U2 right bank abv Scotts C (MC2B) Middle Creek - Lake Co - U 3 Scotts Creek left bank (MC03)								
General	Operations and Maintenance Manuals	A	A							
	Emergency Supplies and Equipment	A	A							
	Flood Preparedness and Training	A	A							
Levee Embankments	Unwanted Vegetation Growth	U	U							
	Sod Cover	NA	NA							
	Encroachments	U	U							
	Closure Structures	NA	NA							
	Slope Stability	A	A							
	Erosion/Bank Caving	A	A							
	Settlement	A	A							
	Depressions/Rutting	A	A							
	Cracking	A	A							
	Animal Control	A	A							
	Culverts/Discharge Pipes	NA	NA							
	Riprap Revetments & Bank Protection	NA	NA							
	Revetments other than Riprap	NA	NA							
	Underseepage Relief Wells/Toe Drainage Systems	NA	NA							
Seepage	A	A								



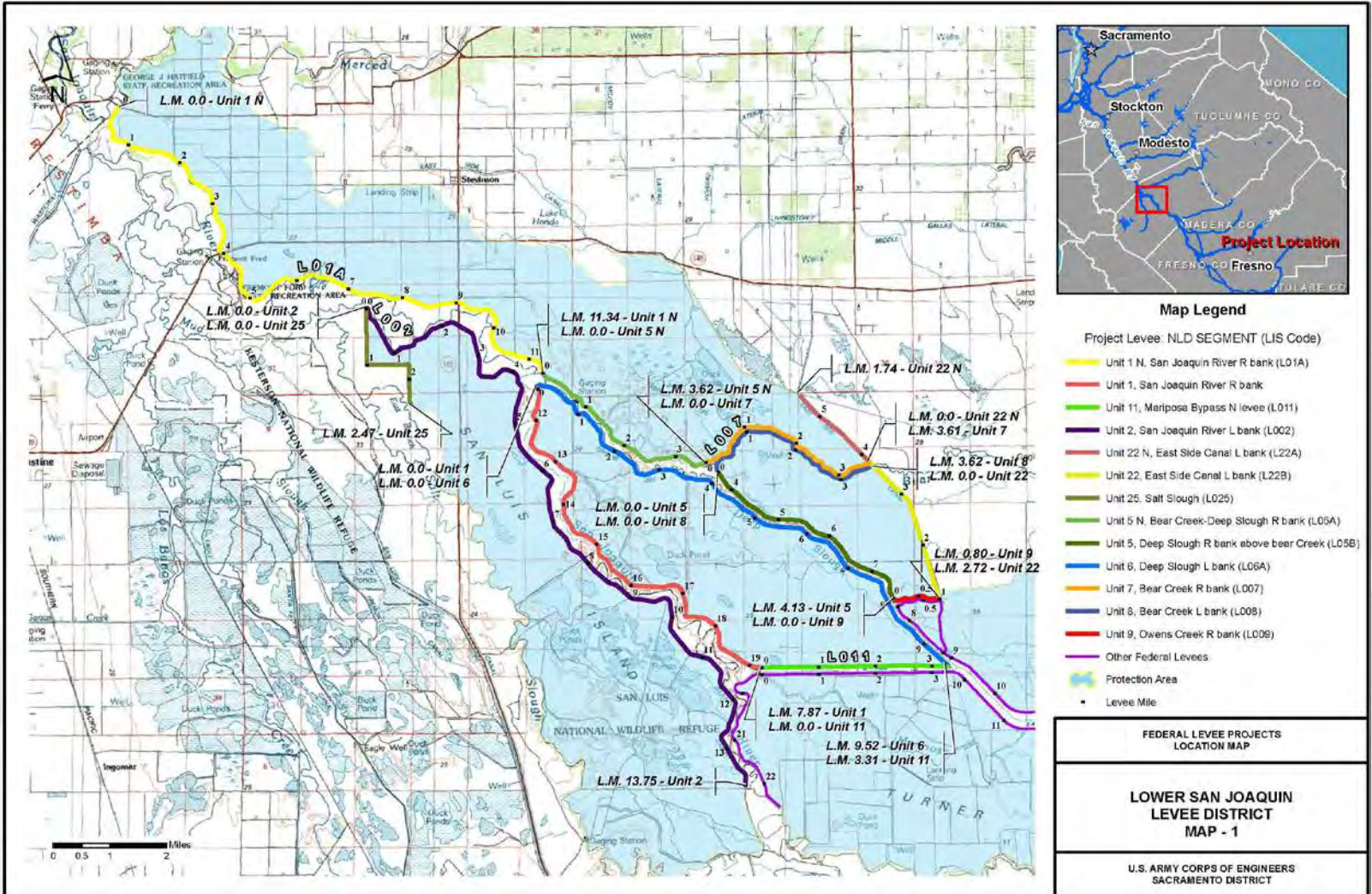


Middle Creek – Unit 2 North

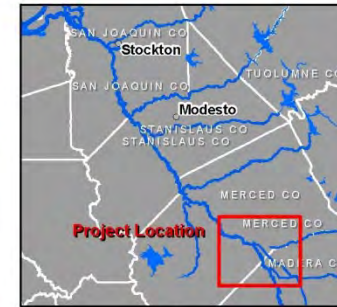
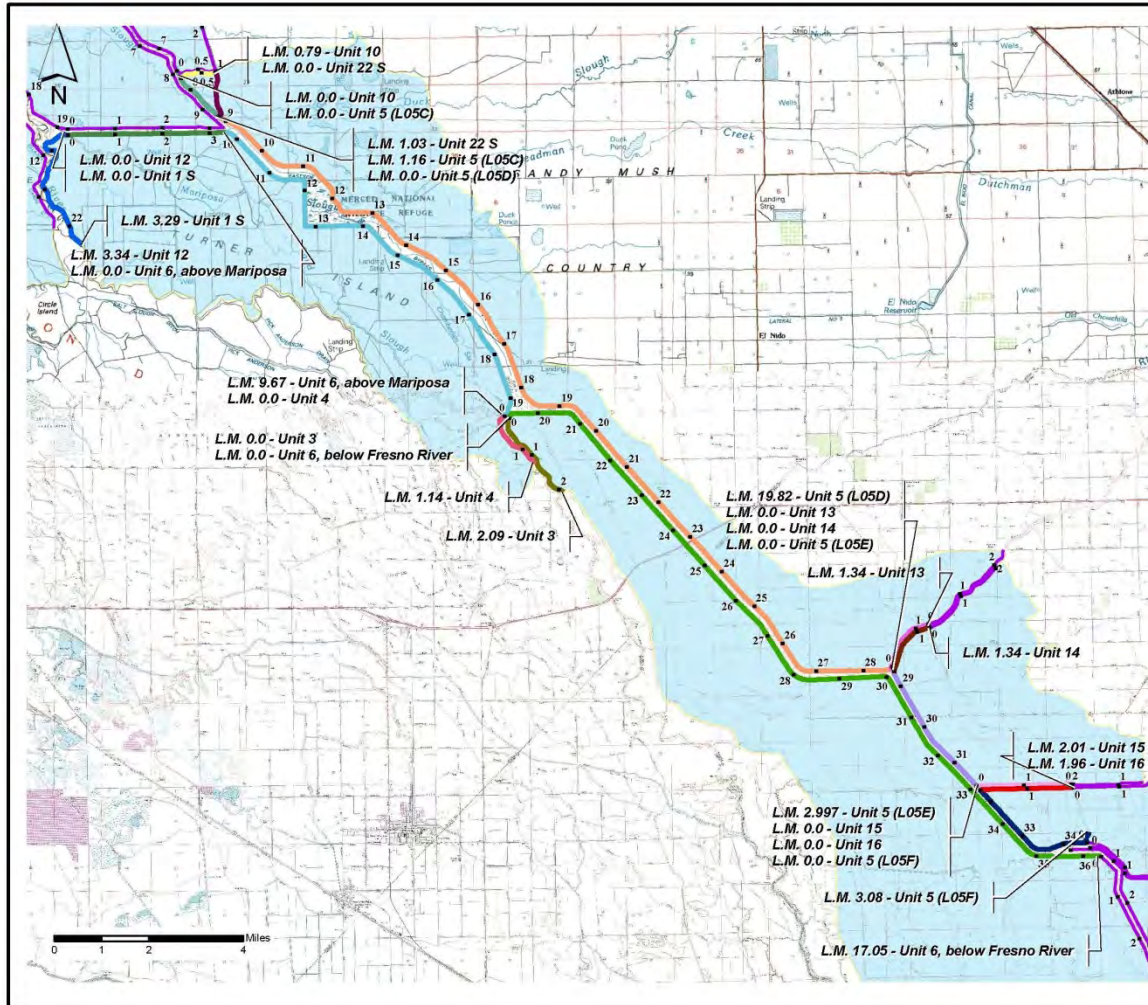
<p style="text-align: center;">System Middle Creek Right Bank - Unit 2 North Minimally Acceptable - Active</p>		<p style="transform: rotate(-45deg);">Middle Creek- Lake Co- U2 north right bank (MC2A)</p>							
General	Operations and Maintenance Manuals	A							
	Emergency Supplies and Equipment	A							
	Flood Preparedness and Training	A							
Levee Embankments	Unwanted Vegetation Growth	U							
	Sod Cover	NA							
	Encroachments	U							
	Closure Structures	NA							
	Slope Stability	A							
	Erosion/Bank Caving	A							
	Settlement	A							
	Depressions/Rutting	A							
	Cracking	A							
	Animal Control	A							
	Culverts/Discharge Pipes	NA							
	Riprap Revetments & Bank Protection	NA							
	Revetments other than Riprap	NA							
	Underseepage Relief Wells/Toe Drainage Systems	NA							
Seepage	A								



LSJLD Systems Map



LSJLD Systems Map



- Map Legend**
- Project Levee: NLD SEGMENT (LIS Code)
- Unit 1 S, San Joaquin River R bank above Mariposa Bypass (L01C)
 - Unit 10, Owens Creek L bank (L01D)
 - Unit 12, Mariposa Bypass S levee (L01E)
 - Unit 13, Ash Slough right bank (L01F)
 - Unit 14, Ash Slough left bank (L01G)
 - Unit 15, Berenda Slough right bank (L01H)
 - Unit 16, Berenda Slough left bank (L01I)
 - Unit 22 S, East Side Canal L bank above Owens Creek (L22C)
 - Unit 3, San Joaquin R bank above Mariposa-Eastside Bypass (L003)
 - Unit 4, San Joaquin L bank above Mariposa-Eastside Bypass (L004)
 - Unit 5 S, Eastside Bypass R bank above Berenda Slough (L05F)
 - Unit 5, Deep Slough R bank above Owens Creek (L05C)
 - Unit 5, Eastside Bypass R bank below Ash Slough (L05D)
 - Unit 5, Eastside Bypass R bank below Berenda Slough (L05E)
 - Unit 6, Eastside Bypass L bank above Mariposa Bypass (L06B)
 - Unit 6, Eastside Bypass L bank below Fresno River (L06C)
 - Other Federal Levees
- Protection Area
- Levee Mile

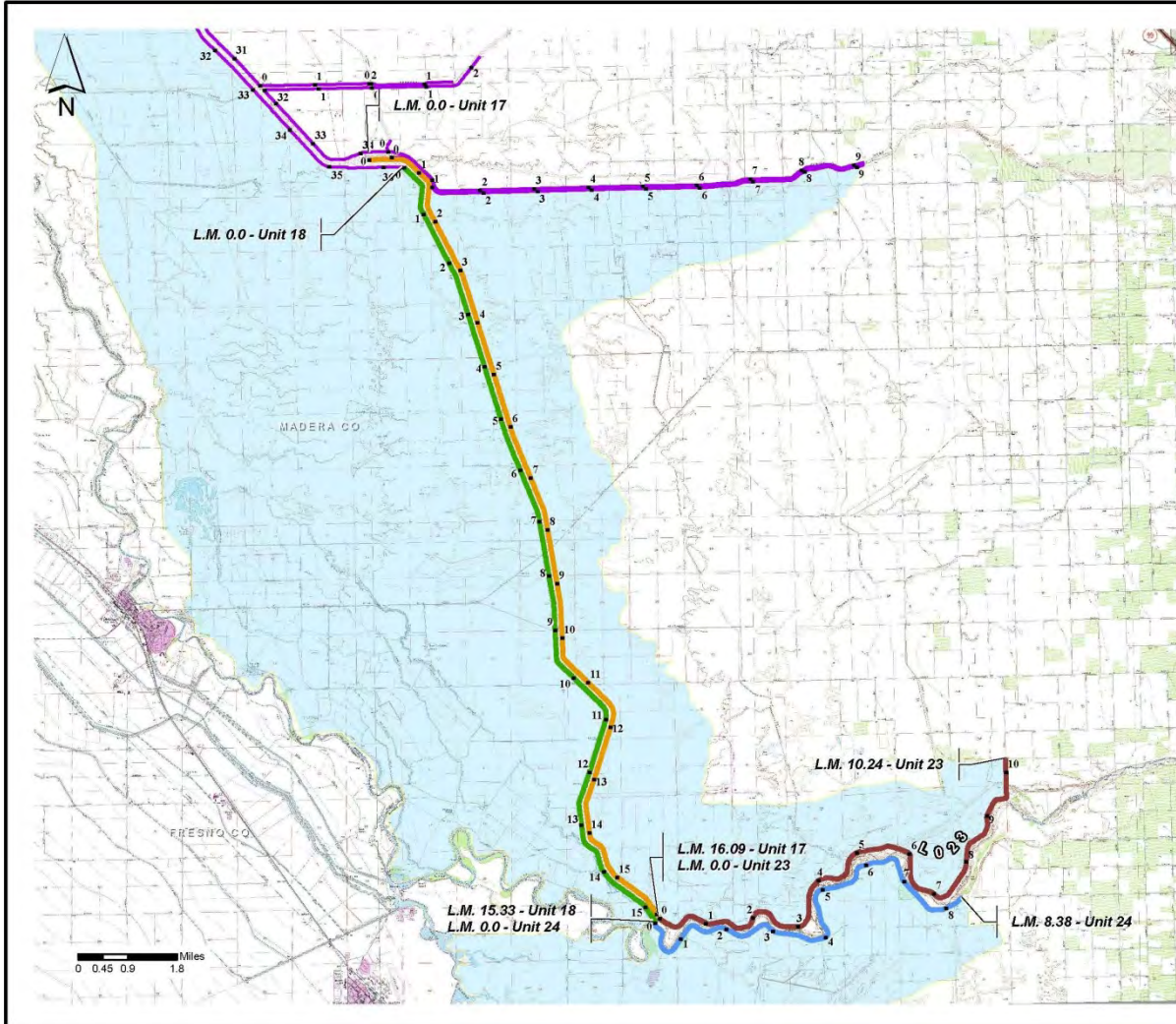
FEDERAL LEEVEE PROJECTS
LOCATION MAP

**LOWER SAN JOAQUIN
LEEVE DISTRICT
MAP - 2**

U.S. ARMY CORPS OF ENGINEERS
SACRAMENTO DISTRICT



LSJLD System Map



Map Legend

Project Levee: NLD SEGMENT (LIS Code)

- Unit 17, Chowchilla Bypass R bank (L017)
- Unit 18, Chowchilla Bypass L bank (L018)
- Unit 23, San Joaquin River R bank (L023)
- Unit 24, San Joaquin River L bank (L024)
- Other Federal Levees
- Protection Area
- Levee Mile

FEDERAL LEVEE PROJECTS
LOCATION MAP

LOWER SAN JOAQUIN
LEVEE DISTRICT
MAP - 3

U.S. ARMY CORPS OF ENGINEERS
SACRAMENTO DISTRICT



LSJLD – Units 5, 10, & 22

System LSJLD-Units 5, 10, and 22 Unacceptable - Inactive		LSJLD- U 5 Deep Slough right bank above Owens Creek (L05C)	LSJLD- U 10 Owens Creek left bank (L010)	LSJLD- U 22 East Side Canal left bank above Owens Creek (L22C)						
General	Operations and Maintenance Manuals	A	A	A						
	Emergency Supplies and Equipment	A	A	A						
	Flood Preparedness and Training	A	A	A						
Levee Embankments	Unwanted Vegetation Growth	U	U	U						
	Sod Cover	NA	NA	NA						
	Encroachments	U	U	U						
	Closure Structures	NA	NA	NA						
	Slope Stability	A	A	A						
	Erosion/Bank Caving	A	A	U						
	Settlement	A	A	A						
	Depressions/Rutting	A	A	U						
	Cracking	A	A	A						
	Animal Control	U	U	U						
	Culverts/Discharge Pipes	NA	NA	NA						
	Riprap Revetments & Bank Protection	NA	NA	NA						
	Revetments other than Riprap	NA	NA	NA						
	Underseepage Relief Wells/Toe Drainage Systems	NA	NA	NA						
	Seepage	A	A	A						
Flood Damage Reduction Channels	Vegetation and Obstructions	A	A	A						
	Shoaling	A	A	A						
	Encroachments	M	A	A						
	Erosion	A	A	U						
	Concrete Surfaces	NA	NA	A						
	Tilting, Sliding, or Settlement of Concrete	NA	NA	U						
	Foundation of Concrete Structures	NA	NA	U						
	Slab and Monolith Joints	NA	NA	NA						
	Flap Gates/Flap Valves/Pinch Valves	NA	NA	NA						
	Riprap Revetments & Banks	NA	NA	NA						
	Revetments other than Riprap	NA	NA	NA						
Likely to Prevent Performance in Next Flood Event/Inactive					Legend A Acceptable M Minimally Acceptable U Unacceptable N/A Not Applicable					
Serious Deficiency noted in past inspections has not been corrected within the established timeframe										
Not Likely to Prevent Performance in Next Flood Event/Active										
The lowest rating is used to determine the overall segment & system ratings and PL 84-99 Eligibility										



8/4/2012



LSJLD – Units 1, 4, 6, & 12

System LSJLD-Units 1, 4, 6, and 12 Unacceptable - Inactive		LSJLD- U 1 South, San Joaquin River right bank above Mariposa Bypass (L01C)				LSJLD- U 4, San Joaquin River left bank above Mariposa Slough-Eastside Bypass (L004)				LSJLD- U 6, Eastside Bypass left bank above Mariposa Bypass (L06B)				LSJLD- U 12, Mariposa Bypass south levee (L012)			
General	Operations and Maintenance Manuals	A	A	A	A												
	Emergency Supplies and Equipment	A	A	A	A												
	Flood Preparedness and Training	A	A	A	A												
Levee Embankments	Unwanted Vegetation Growth	U	U	U	U												
	Sod Cover	NA	U	U	NA												
	Encroachments	U	U	U	U												
	Closure Structures	NA	NA	NA	NA												
	Slope Stability	A	M	A	A												
	Erosion/Bank Caving	A	A	U	A												
	Settlement	A	A	A	A												
	Depressions/Rutting	A	M	U	U												
	Cracking	A	A	U	A												
	Animal Control	U	U	U	U												
	Culverts/Discharge Pipes	NA	NA	NA	NA												
	Riprap Revetments & Bank Protection	NA	NA	NA	NA												
	Revetments other than Riprap	NA	NA	NA	NA												
	Underseepage Relief Wells/Toe Drainage Systems	NA	NA	NA	NA												
Seepage	A	A	A	A													
Flood Damage Reduction Channels	Vegetation and Obstructions	U	A	A	A												
	Shoaling	A	A	A	A												
	Encroachments	U	A	U	U												
	Erosion	M	A	A	M												
	Concrete Surfaces	NA	NA	A	A												
	Tilting, Sliding, or Settlement of Concrete	NA	NA	NA	NA												
	Foundation of Concrete Structures	NA	NA	NA	NA												
	Slab and Monolith Joints	U	NA	NA	NA												
	Flap Gates/Flap Valves/Pinch Valves	NA	NA	NA	NA												
	Riprap Revetments & Banks	NA	NA	NA	NA												
Revetments other than Riprap	NA	NA	A	NA													
<p>Unlikely to Prevent Performance in Next Flood Event/Inactive</p> <p>Serious deficiency noted in past inspections has not been corrected within the established timeframe</p> <p>Not Likely to Prevent Performance in Next Flood Event/Active</p>											<p>Legend</p> <p>A Acceptable</p> <p>M Minimally Acceptable</p> <p>U Unacceptable</p> <p>N/A Not Applicable</p>						
The worst rating is used to determine the overall segment & system ratings and PL 84-99 Eligibility											11/19/2012						





BUILDING STRONG®

LSJLD Units 3, 6, & 18

		LSJLD-Units 3, 6, 18 – Eastside-Chowchilla Bypass Unacceptable - Inactive								
		LSJLD- U 3 San Joaquin R right bank abv Mariposa S	LSJLD- U 6 Eastside Byp left bank below Fresno R	LSJLD- U 18 Eastside Bypass left bnk abov Fresno R						
General	Operations and Maintenance Manuals	A	A	A						
	Emergency Supplies and Equipment	A	A	A						
	Flood Preparedness and Training	A	A	A						
Levee Embankments	Unwanted Vegetation Growth	A	M	U						
	Sod Cover	M	NA	NA						
	Encroachments	U	U	U						
	Closure Structures	NA	NA	NA						
	Slope Stability	A	A	A						
	Erosion/Bank Caving	A	U	A						
	Settlement	A	A	A						
	Depressions/Rutting	M	U	M						
	Cracking	A	A	A						
	Animal Control	U	U	U						
	Culverts/Discharge Pipes	NA	NA	NA						
	Riprap Revetments & Bank Protection	NA	NA	NA						
	Revetments other than Riprap	NA	NA	NA						
	Underseepage Relief Wells/Toe Drainage Systems	NA	NA	NA						
Seepage	A	A	M							
Flood Damage Reduction Channels	Vegetation and Obstructions	A	M	U						
	Shoaling	A	M	A						
	Encroachments	A	U	A						
	Erosion	A	A	A						
	Concrete Surfaces	NA	M	M						
	Tilting, Sliding, or Settlement of Concrete	NA	M	NA						
	Foundation of Concrete Structures	NA	A	NA						
	Slab and Monolith Joints	NA	NA	NA						
	Flap Gates/Flap Valves/Pinch Valves	NA	NA	NA						
	Riprap Revetments & Banks	NA	NA	NA						
Revetments other than Riprap	NA	NA	NA							
		<p>Legend</p> <p>A Acceptable</p> <p>M Minimally Acceptable</p> <p>U Unacceptable</p> <p>N/A Not Applicable</p>								
		<p>The worst rating is used to determine the overall segment & system ratings and PL 84-99 Eligibility</p>								





LSJLD Units 17, 23, Fresno River, Chowchilla Bypass

System LSJLD-Units 17, 23, Fresno River, Chowchilla Bypass Unacceptable - Inactive		Fresno River - left bank (FRN2)			LSJLD-Unit 17, Chowchilla Bypass right bank above Fresno River (L017)			LSJLD- Unit 23, San Joaquin River right bank above Chowchilla Bypass (L023)		
General	Operations and Maintenance Manuals	A	A	A						
	Emergency Supplies and Equipment	A	A	A						
	Flood Preparedness and Training	A	A	A						
Levee Embankments	Unwanted Vegetation Growth	U	U	U						
	Sod Cover	NA	NA	NA						
	Encroachments	U	U	U						
	Closure Structures	NA	NA	NA						
	Slope Stability	U	A	U						
	Erosion/Bank Caving	M	A	U						
	Settlement	A	A	A						
	Depressions/Rutting	U	U	U						
	Cracking	A	A	A						
	Animal Control	U	U	U						
	Culverts/Discharge Pipes	NA	NA	NA						
	Riprap Revetments & Bank Protection	NA	NA	M						
	Revetments other than Riprap	NA	NA	NA						
	Underseepage Relief Wells/Toe Drainage Systems	NA	NA	NA						
Seepage	U	A	A							
Flood Damage Reduction Channels	Vegetation and Obstructions	A	A	M						
	Shoaling	A	M	M						
	Encroachments	U	U	U						
	Erosion	A	A	A						
	Concrete Surfaces	A	M	NA						
	Tilting, Sliding, or Settlement of Concrete	A	M	NA						
	Foundation of Concrete Structures	A	A	NA						
	Slab and Monolith Joints	A	M	NA						
	Flap Gates/Flap Valves/Pinch Valves	NA	NA	NA						
	Riprap Revetments & Banks	NA	NA	NA						
	Revetments other than Riprap	NA	NA	NA						
<p>U Not Likely to Prevent Performance in Next Flood Event/Inactive</p> <p>M Serious deficiency noted in past inspections has not been corrected within the established timeframe.</p> <p>U Not Likely to Prevent Performance in Next Flood Event/Active</p>		<p>Legend</p> <p>A Acceptable</p> <p>M Minimally Acceptable</p> <p>U Unacceptable</p> <p>N/A Not Applicable</p>								
The worst rating is used to determine the overall segment & system ratings and PL 84-99 Eligibility										





LSJLD Units 5, 8, 9, & 22

		System LSJLD-Units 5, 8, 9, and 22 Unacceptable - Inactive										
		LSJLD- U 5 Deep Slough right bank above Bear Creek (L09B)	LSJLD- U 8 Bear Creek left bank (L008)	LSJLD- U 9 Owens Creek right bank (L009)	LSJLD- U 22 East Side Canal left bank abv Bear Cr (L22B)							
General	Operations and Maintenance Manuals	A	A	A	A							
	Emergency Supplies and Equipment	A	A	A	A							
	Flood Preparedness and Training	A	A	A	A							
Levee Embankments	Unwanted Vegetation Growth	A	U	U	U							
	Sod Cover	NA	NA	NA	NA							
	Encroachments	U	U	U	U							
	Closure Structures	NA	NA	NA	NA							
	Slope Stability	A	A	A	U							
	Erosion/Bank Caving	A	A	M	U							
	Settlement	A	A	A	A							
	Depressions/Rutting	M	A	A	U							
	Cracking	A	A	A	A							
	Animal Control	U	U	U	U							
	Culverts/Discharge Pipes	NA	NA	NA	NA							
	Riprap Revetments & Bank Protection	NA	NA	NA	NA							
	Revetments other than Riprap	NA	NA	NA	NA							
	Underseepage Relief Wells/Toe Drainage Systems	NA	NA	NA	NA							
Seepage	A	A	A	A								
Flood Damage Reduction Channels	Vegetation and Obstructions	M	A	M	A							
	Shoaling	A	A	A	A							
	Encroachments	A	A	M	U							
	Erosion	A	A	A	A							
	Concrete Surfaces	NA	NA	NA	NA							
	Tilting, Sliding, or Settlement of Concrete	NA	NA	NA	NA							
	Foundation of Concrete Structures	NA	NA	NA	NA							
	Slab and Monolith Joints	NA	NA	NA	NA							
	Flap Gates/Flap Valves/Pinch Valves	NA	NA	NA	NA							
	Riprap Revetments & Banks	NA	NA	NA	NA							
	Revetments other than Riprap	NA	NA	NA	NA							
										Legend A Acceptable M Minimally Acceptable U Unacceptable N/A Not Applicable		
Daily Inspections Performance in Past Flood Event inactive												
Serious deficiency noted in past inspections has not been corrected within the established timeframe												
Not Likely to Prevent Performance in Next Flood Event/Active												
The lowest rating is used to determine the overall segment & system ratings and PL 84-99 Eligibility										11/13/2012		





LSJLD – Units 1, 6, & 11

System LSJLD-Units 1, 6, and 11 Minimally Acceptable - Active		LSJLD- U1 San Joaquin R Rt bnk below Mariposa Byp (L01B)			LSJLD- U6 Deep Sigh left bank below Mariposa Byp (L06A)			LSJLD U11 Mariposa Bypass north levee (L011)		
General	Operations and Maintenance Manuals	A	A	A						
	Emergency Supplies and Equipment	A	A	A						
	Flood Preparedness and Training	A	A	A						
Levee Embankments	Unwanted Vegetation Growth	U	M	U						
	Sod Cover	NA	NA	NA						
	Encroachments	U	U	U						
	Closure Structures	NA	NA	NA						
	Slope Stability	A	M	A						
	Erosion/Bank Caving	A	M	A						
	Settlement	A	A	A						
	Depressions/Rutting	U	A	A						
	Cracking	A	A	A						
	Animal Control	M	M	A						
	Culverts/Discharge Pipes	NA	NA	NA						
	Riprap Revetments & Bank Protection	NA	NA	NA						
	Revetments other than Riprap	NA	NA	NA						
	Underseepage Relief Wells/Toe Drainage Systems	NA	NA	NA						
Seepage	A	A	A							
Flood Damage Reduction Channels	Vegetation and Obstructions	A	M	A						
	Shoaling	A	A	A						
	Encroachments	A	U	M						
	Erosion	A	A	A						
	Concrete Surfaces	NA	A	U						
	Tilting, Siding, or Settlement of Concrete	NA	NA	M						
	Foundation of Concrete Structures	NA	NA	NA						
	Slab and Monolith Joints	NA	NA	NA						
	Flap Gates/Flap Valves/Pinch Valves	NA	NA	NA						
	Riprap Revetments & Banks	NA	NA	NA						
Revetments other than Riprap	NA	NA	NA							
<p>Very Poor performance in Next Flood Event/Active</p> <p>Serious deficiency noted in past inspections that has not been corrected within the established timeframe</p> <p>Not Likely to Prevent Performance in Next Flood Event/Active</p>								<p>Legend</p> <p>A Acceptable</p> <p>M Minimally Acceptable</p> <p>U Unacceptable</p> <p>N/A Not Applicable</p>		
The lowest rating is used to determine the overall segment & system ratings and PL 84-99 Eligibility								8/13/2012		



LSJLD – Units 5,13, Ash Slough

System LSJLD-Units 5 and 13 Unacceptable - Inactive		Chowchilla River - Ash Slough Right Bank (CHW1)			Lower San Joaquin LD - Unit 5, Eastside Bypass Right Bank Below Ash Slough (L05D)			Lower San Joaquin LD - Unit 13, Ash Slough right bank (L013)		
General	Operations and Maintenance Manuals	A	A	A						
	Emergency Supplies and Equipment	A	A	A						
	Flood Preparedness and Training	A	A	A						
Levee Embankments	Unwanted Vegetation Growth	U	U	U						
	Sod Cover	NA	NA	NA						
	Encroachments	U	U	U						
	Closure Structures	NA	NA	NA						
	Slope Stability	A	A	A						
	Erosion/Bank Caving	A	U	A						
	Settlement	A	A	A						
	Depressions/Rutting	U	A	A						
	Cracking	A	A	A						
	Animal Control	U	U	U						
	Culverts/Discharge Pipes	NA	NA	NA						
	Riprap Revetments & Bank Protection	NA	NA	NA						
	Revetments other than Riprap	NA	NA	NA						
	Underseepage Relief Wells/Toe Drainage Systems	NA	NA	NA						
Seepage	A	A	A							
Flood Damage Reduction Channels	Vegetation and Obstructions	A	A	A						
	Shoaling	A	A	A						
	Encroachments	A	M	A						
	Erosion	A	A	U						
	Concrete Surfaces	NA	NA	A						
	Tilting, Sliding, or Settlement of Concrete	NA	NA	NA						
	Foundation of Concrete Structures	NA	NA	U						
	Slab and Monolith Joints	NA	NA	NA						
	Flap Gates/Flap Valves/Pinch Valves	NA	NA	NA						
	Riprap Revetments & Banks	NA	NA	NA						
	Revetments other than Riprap	NA	NA	NA						
<p>Highly Presents Performance in Next Flood Event/Inactive</p> <p>Serious deficiency noted in past inspections that has not been corrected within the established timeframe</p> <p>Not Likely to Prevent Performance in Next Flood Event/Active</p> <p>The lowest rating is used to determine the overall segment & system ratings and PL 84-99 Eligibility</p>		<p>Legend</p> <p>A Acceptable</p> <p>M Minimally Acceptable</p> <p>U Unacceptable</p> <p>N/A Not Applicable</p>								





LSJLD – Units 5,16, Brenda Slough and Fresno River

System LSJLD-Units 5, 16 Brenda Fresno Unacceptable - Active		Chowchilla River - Berenda Slough Left Bank (CHW4)				Fresno River - Right Bank (FRN1)				LSJLD - Unit 5 South, Eastside Bypass Right Bank above Berenda Slough (L05F)				LSJLD - Berenda Slough Left Bank (L016)			
		A		A		A		A		A		A		A			
General	Operations and Maintenance Manuals	A	A	A	A												
	Emergency Supplies and Equipment	A	A	A	A												
	Flood Preparedness and Training	A	A	A	A												
Levee Embankments	Unwanted Vegetation Growth	U	U	U	U												
	Sod Cover	NA	U	NA	NA												
	Encroachments	U	U	U	U												
	Closure Structures	NA	NA	NA	NA												
	Slope Stability	U	U	A	A												
	Erosion/Bank Caving	A	A	A	A												
	Settlement	A	A	A	A												
	Depressions/Rutting	U	U	A	U												
	Cracking	A	A	A	A												
	Animal Control	U	U	U	U												
	Culverts/Discharge Pipes	NA	NA	NA	NA												
	Riprap Revetments & Bank Protection	NA	NA	NA	NA												
	Revetments other than Riprap	NA	NA	NA	NA												
	Underseepage Relief Wells/Toe Drainage Systems	NA	NA	NA	NA												
	Seepage	A	A	A	A												
Flood Damage Reduction Channels	Vegetation and Obstructions	A	U	A	A												
	Shoaling	A	M	A	A												
	Encroachments	A	A	A	A												
	Erosion	A	U	A	A												
	Concrete Surfaces	NA	NA	A	NA												
	Tilting, Sliding, or Settlement of Concrete	NA	NA	A	NA												
	Foundation of Concrete Structures	NA	NA	M	NA												
	Slab and Monolith Joints	NA	NA	NA	NA												
	Flap Gates/Flap Valves/Pinch Valves	NA	NA	NA	NA												
	Riprap Revetments & Banks	NA	NA	NA	NA												
	Revetments other than Riprap	NA	NA	NA	NA												
<p>Very Poor/Not Performant In Next Flood Event/Active</p> <p>Serious deficiency noted in past inspections has not been corrected within the established timeframes</p> <p>Not Likely to Prevent Performance In Next Flood Event/Active</p> <p>The lowest rating is used to determine the overall segment & system ratings and PL 84-99 Eligibility</p>														<p>Legend</p> <p>A Acceptable</p> <p>M Minimally Acceptable</p> <p>U Unacceptable</p> <p>N/A Not Applicable</p>			





LSJLD – Units 1, 5, 7, 22

System LSJLD-Units 1, 5, 7, and 22 Unacceptable - Inactive		Units				Overall			
		LSJLD- U 1 San Joaquin R right bnk below Bear Cr (L01A)	LSJLD- U 5 north Bear Creek- Deep Slough right bank (L05A)	LSJLD- U 7 Bear Creek right bank (L007)	LSJLD- U 22 north East Slide Canal left bank (L22A)	Overall Rating	Overall Status	PL 84-99 Eligibility	PL 84-99 Rating
General	Operations and Maintenance Manuals	A	A	A	A				
	Emergency Supplies and Equipment	A	A	A	A				
	Flood Preparedness and Training	A	A	A	A				
Levee Embankments	Unwanted Vegetation Growth	U	A	U	U				
	Sod Cover	NA	NA	NA	NA				
	Encroachments	U	U	U	U				
	Closure Structures	NA	NA	NA	NA				
	Slope Stability	A	U	A	A				
	Erosion/Bank Caving	M	A	A	U				
	Settlement	A	U	A	A				
	Depressions/Rutting	U	A	A	M				
	Cracking	A	A	A	A				
	Animal Control	U	U	U	U				
	Culverts/Discharge Pipes	NA	NA	NA	NA				
	Riprap Revetments & Bank Protection	NA	NA	NA	NA				
	Revetments other than Riprap	NA	NA	NA	NA				
	Underseepage Relief Wells/Toe Drainage Systems	NA	NA	NA	NA				
	Seepage	M	M	M	M				
Flood Damage Reduction Channels	Vegetation and Obstructions	U	A	U	U				
	Shoaling	A	A	A	A				
	Encroachments	A	A	U	U				
	Erosion	A	A	A	A				
	Concrete Surfaces	NA	NA	A	M				
	Tilting, Sliding, or Settlement of Concrete	NA	NA	NA	NA				
	Foundation of Concrete Structures	NA	NA	NA	NA				
	Slab and Monolith Joints	NA	NA	NA	NA				
	Flap Gates/Flap Valves/Pinch Valves	NA	NA	NA	NA				
	Riprap Revetments & Banks	NA	NA	NA	NA				
Revetments other than Riprap	NA	NA	NA	NA					
<p>Likely Prevents Performance in Next Flood Event/Inactive</p> <p>Serious deficiency noted in past inspections has not been corrected within the established timeframe</p> <p>Likely Prevents Performance in Next Flood Event/Active (Framework)</p> <p>Not Likely to Prevent Performance in Next Flood Event/Active</p> <p>Not Likely to Prevent Performance in Next Flood Event/Active (Framework)</p> <p>The worst rating is used to determine the overall segment & system ratings and PL 84-99 Eligibility</p>						<p>Legend</p> <p>A Acceptable</p> <p>M Minimally Acceptable</p> <p>U Unacceptable</p> <p>N/A Not Applicable</p>			

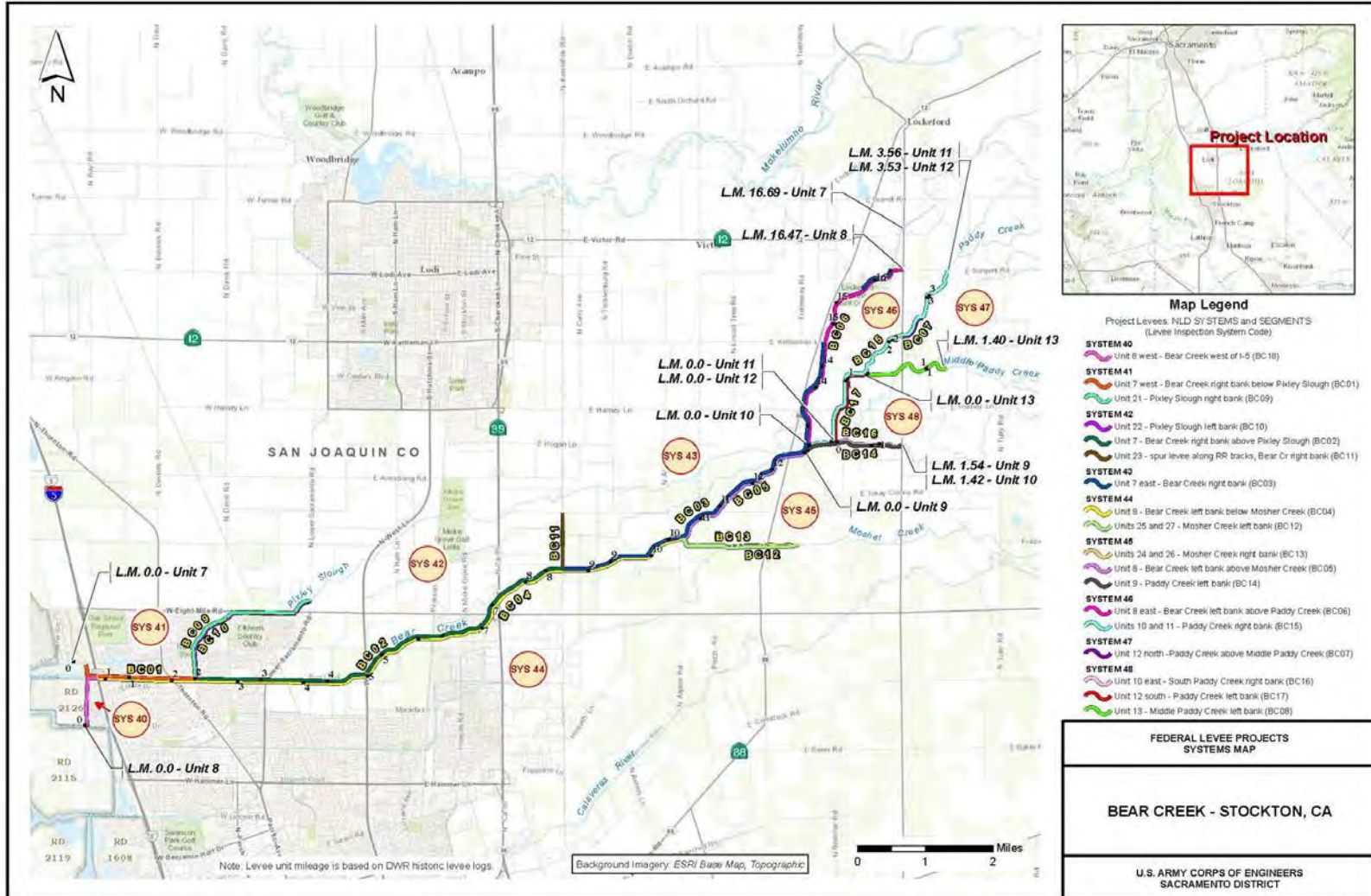


LSJLD – Units 2 and 25

		System LSJLD-Units 2,25 Unacceptable - Inactive								
		LSJLD- U 2, San Joaquin River left bank (L002)							LSJLD- U 25, Salt Slough (L025)	
General	Operations and Maintenance Manuals	A	A							
	Emergency Supplies and Equipment	A	A							
	Flood Preparedness and Training	A	A							
Levee Embankments	Unwanted Vegetation Growth	U	U							
	Sod Cover	NA	NA							
	Encroachments	U	U							
	Closure Structures	NA	NA							
	Slope Stability	A	A							
	Erosion/Bank Caving	U	A							
	Settlement	M	A							
	Depressions/Rutting	U	A							
	Cracking	A	A							
	Animal Control	M	A							
	Culverts/Discharge Pipes	NA	NA							
	Riprap Revetments & Bank Protection	NA	NA							
	Revetments other than Riprap	NA	NA							
	Underseepage Relief Wells/Toe Drainage Systems	NA	NA							
Seepage	M	M								



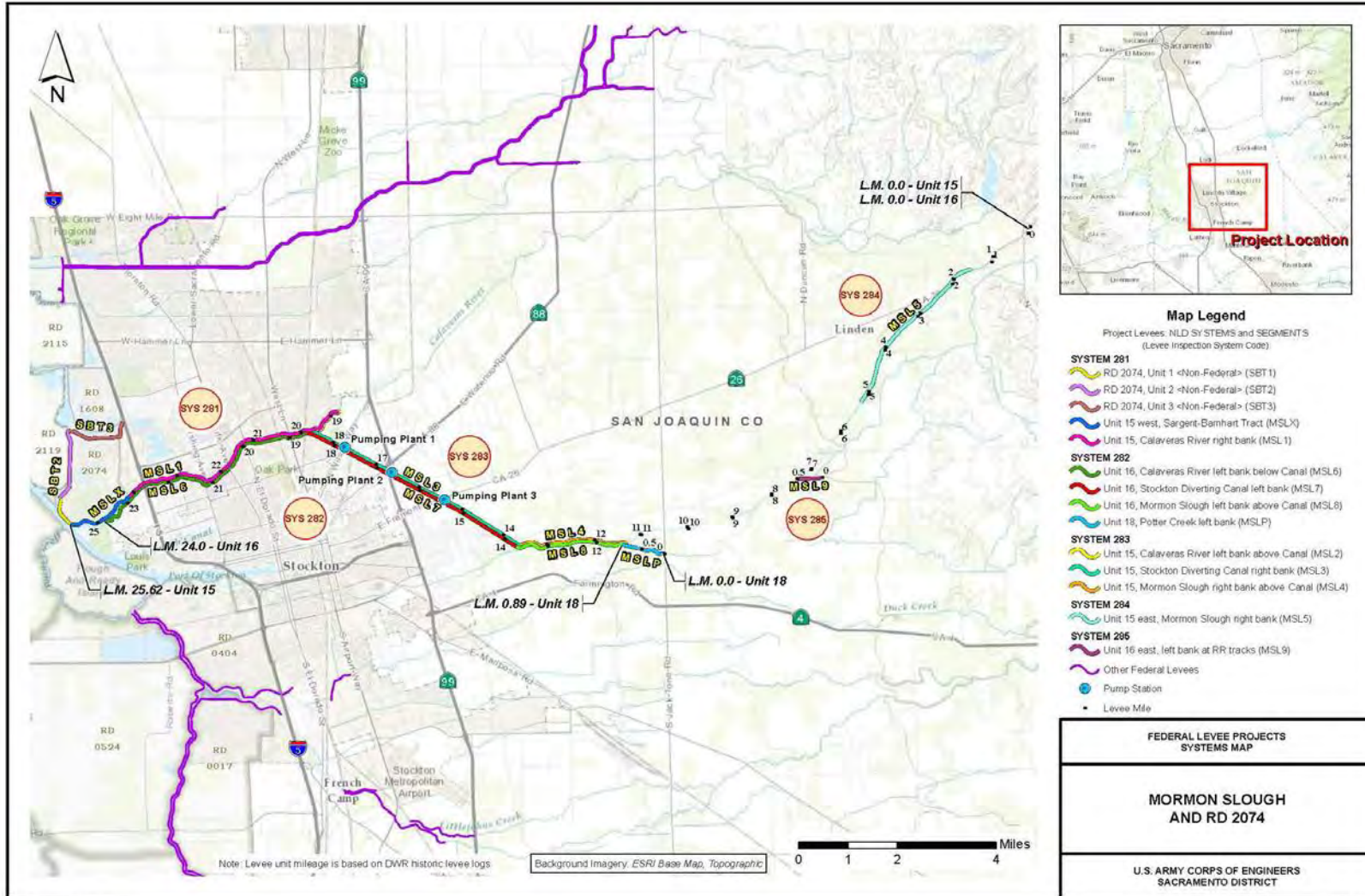
Bear Creek Systems Reinstated



Map Prepared by Jim Mars

FEB 2013

Mormon Slough Systems Reinstated



Map Prepared by Jim Mars

FEB 2013



BUILDING STRONG®

Questions/Comments



BUILDING STRONG®