

Meeting of the Central Valley Flood Protection Board

Staff Report—Central Valley Flood Protection Board Acquisitions and Utility Relocations

Pacific Gas and Electric Grant of Easement

(By: Delia Grijalva)

1.0-ITEM

Pacific Gas & Electric (PG&E) is requesting a permanent non-exclusive easement for the purpose of ingress and egress as part of the West Sacramento Area Flood Control Agency (WSAFCA) Early Implementation Program project over property held in fee-title by Sacramento San Joaquin Drainage District (SSJDD) acting by and through the Central Valley Flood Protection Board (Board) in Yolo County.

2.0-BACKGROUND

In November of 2006, California voters passed Proposition 1E to make funds available to Local Agencies for flood protection work. WSAFCA entered into an agreement with the Department of Water Resources (DWR) making DWR a cost-sharing partner in the flood protection work being completed by WSAFCA in 2011. Part of the project required the relocation of a PG&E pole line.

With the relocation of the pole line, it is necessary for PG&E to continue to access the pole line. WSAFCA was issued an encroachment permit (EP) by the Board at the May Board meeting for the work to be performed on the south levee of the Sacramento Bypass. The EP application noted the need to relocate the PG&E pole line outside of the 10' maintenance road at the landside toe of the south levee. Board staff issued a Letter of Authorization to PG&E for the removal of the existing pole line and relocation of said pole line.

In 1924, the Board (then Reclamation Board), in agreement with Reclamation District Number 537, allowed the top of the South Levee of the Sacramento Bypass to be used as a public road. It became known as County Road 127. In 1996, Yolo County vacated County Road 127, with the following conditions: all public utility easements recorded and/or unrecorded are excepted from this vacation; and operators of contiguous property shall be reserved and excepted from this vacation. Over the last few decades, PG&E has been accessing the pole line in its current location over what was County Road 127.

3.0-DESCRIPTION

In order for PG&E to maintain facilities within the relocated easement area, PG&E requires access from Harbor Boulevard located east of the south levee of the Sacramento Bypass. SSJDD, acting by and through the Board, is the fee-title owner of the south levee of the Sacramento Bypass. PG&E's use of the east portion of the south levee of the Sacramento Bypass will not interfere with SSJDD's nor the maintenance agency's use of the levee for flood control purposes. Standard reservations in the Easement Deed protecting the Board's ability to perform flood fighting and any other associated activities will be made. Review of the final Easement Deed by the Executive Officer and counsel will occur prior to execution of said Easement Deed.

4.0-STAFF RECOMMENDATION

Staff recommends the Board approve Resolution Number 11-21 which approves the conveyance of a permanent non-exclusive access easement from the Sacramento San Joaquin Drainage District to Pacific Gas and Electric and delegates to the Board Executive Officer the authority to execute the Easement Deed and any associated documents needed for this real estate transaction.

5.0-LIST OF ATTACHMENTS

- A. Location Map
- B. Engineering drawing
- C. Resolution 11-21

**Central Valley Flood Protection Board
West Sacramento, Sacramento Bypass
Proposed PG&E Access Easement**

Attachment A

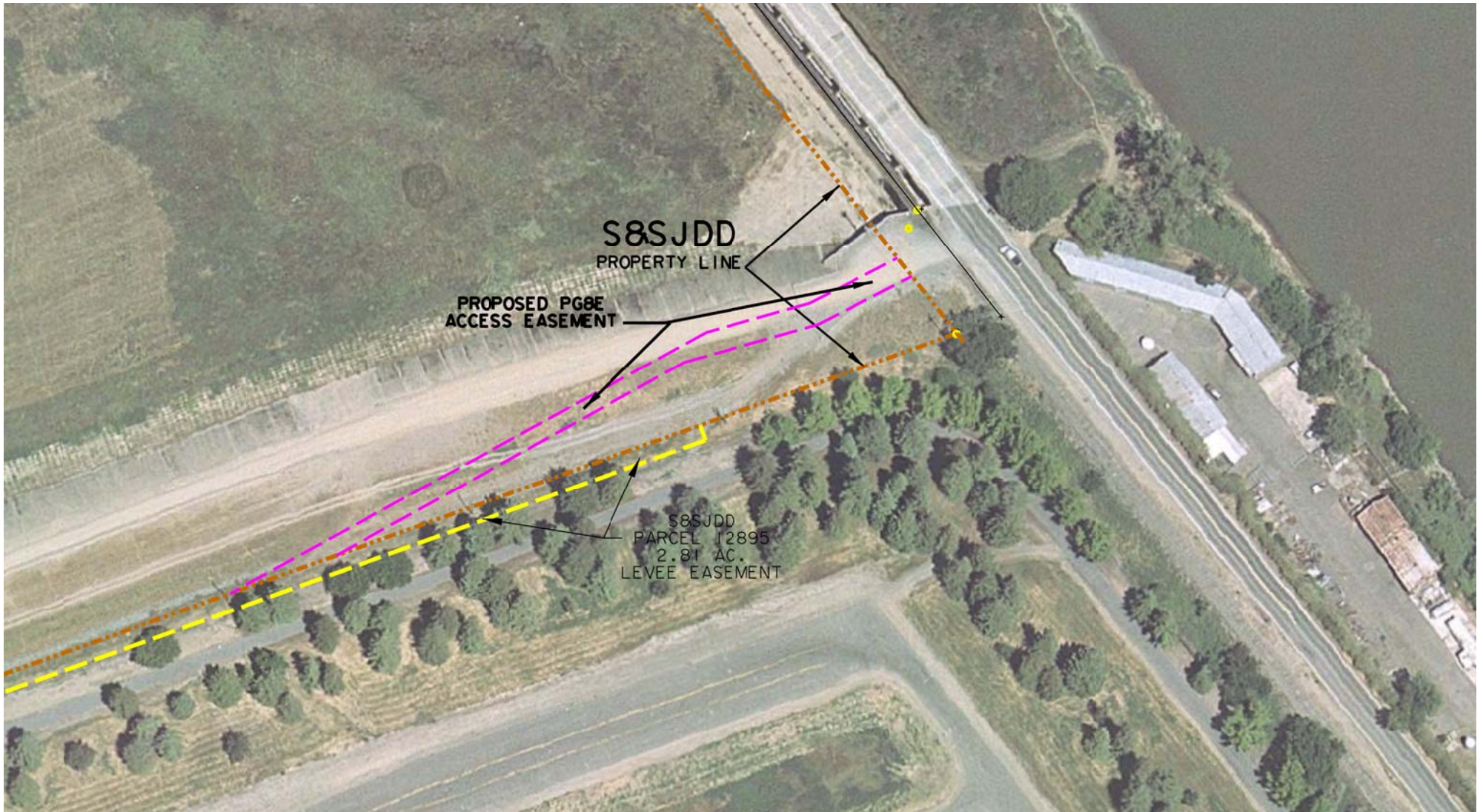
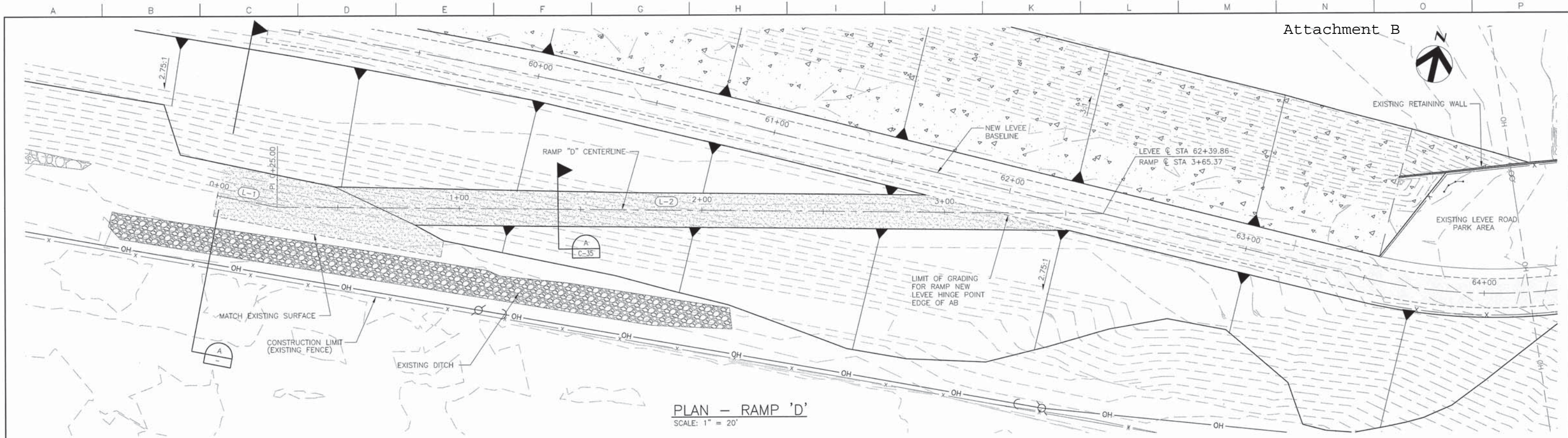
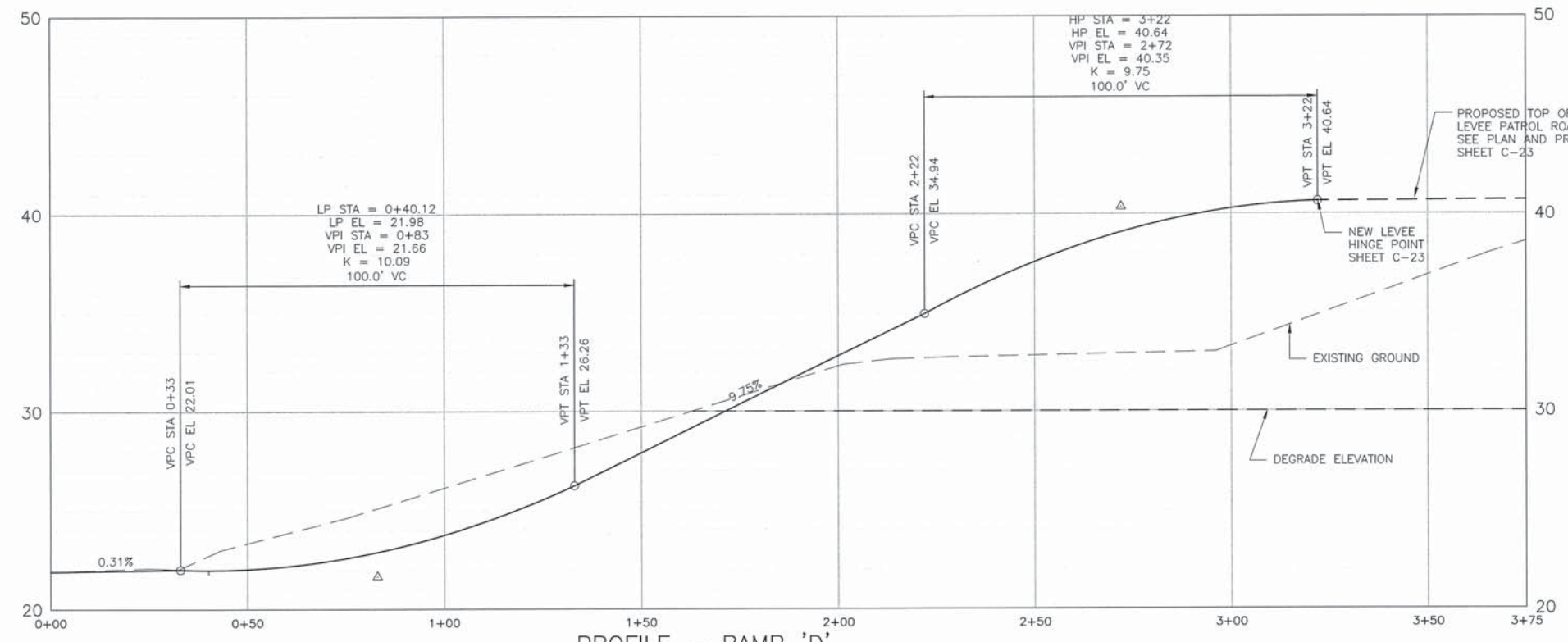


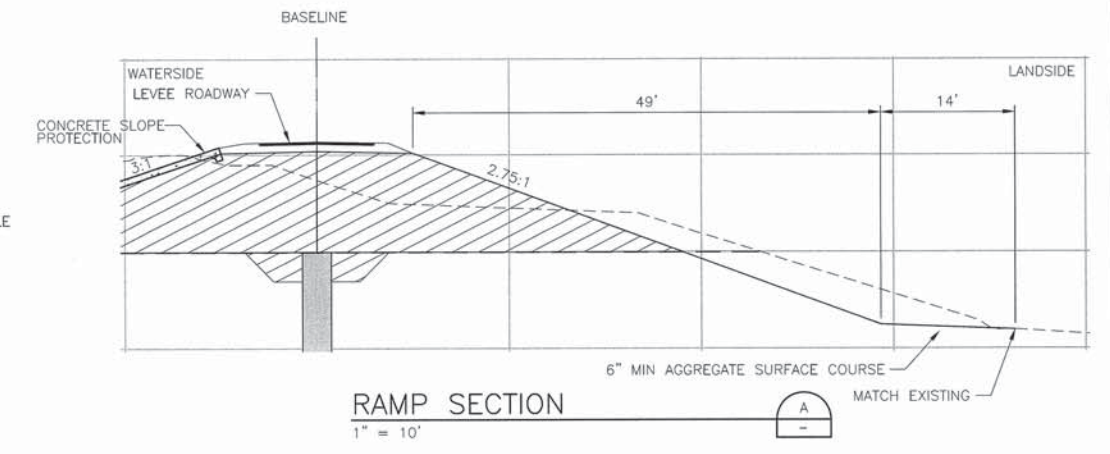
Exhibit Drawn by Robert E. Chesner PLS6670
Cadastral Surveys and Land Records,
Geodetic Branch, Division of Engineering
Department of Water Resources,
The Resources Agency, State of California
8/12



PLAN - RAMP 'D'
SCALE: 1" = 20'



PROFILE - RAMP 'D'
SCALE: HORIZ: 1" = 20'
VERT: 1" = 4'



RAMP SECTION
1" = 10'

RAMP 'D' CENTERLINE ALIGNMENT LINE TABLE				
LINE NO.	LENGTH	DIRECTION	START POINT (N,E)	END POINT (N,E)
L-1	25.00'	N71°07'47"E	1981391.78, 6688130.66	1981399.87, 6688154.32
L-2	340.37'	N60°56'13"E	1981399.87, 6688154.32	1981565.21, 6688451.83

C:\pwworking\hsc\0135698\01c-038.dwg 10/01/10 17:42:39

100% SUBMITTAL	10/01/10	VFR	JGH	RCH/MJV	EEN
Date	Drawn	Chk'd	Resp. Engr.	Proj. Mgr.	

HORIZONTAL DATUM IS THE CALIFORNIA COORDINATE SYSTEM, ZONE 2 (NAD 83)
VERTICAL DATUM IS NAVD 88
VERTICAL DATUM CORRECTION EQUATION: NAVD 88 = NGVD29 + 2.6'



Project Manager	E. NACY
Designed	M. VECCHIO
Checked	J. HESS
Drawn	V. RUSSO

West Sacramento Area Flood Control Agency
Levee Improvement Program
Early Implementation Project
C.H.P. Academy Site - Sacramento Bypass

WEST SACRAMENTO EIP - C.H.P. ACADEMY SACRAMENTO BYPASS RAMP 'D'			
Date	OCTOBER 2010	Project No.	007436-68914-141
Scale		File Name	01C-038.dwg
Drawing No.	C-38	Issue	X

STATE OF CALIFORNIA
THE NATURAL RESOURCES AGENCY
THE CENTRAL VALLEY FLOOD PROTECTION BOARD

RESOLUTION NUMBER 11-21

AUTHORIZES EXECUTION OF
AN ACCESS EASEMENT DEED TO
PACIFIC GAS & ELECTRIC

WHEREAS, the Central Valley Flood Protection Board (Board) recognizes the necessity of Pacific Gas and Electric (PG&E) to maintain access to the PG&E Electric Transmission Easement located adjacent to property held in fee by the Sacramento San Joaquin Drainage District (SSJDD) acting by and through the Board; and

WHEREAS, the Board recognizes the south levee of the Sacramento Bypass served as Yolo County Road 127; and

WHEREAS, the Board recognizes the use of said County Road by PG&E occurred over several decades in order for PG&E to access an Electric Transmission Easement located at the landside toe of the levee; and

WHEREAS, The Board recognizes the necessity of the PG&E pole line relocation due to improvements to flood control facilities as part of the West Sacramento Flood Control Agency's Early Implementation Program project on the South Levee of the Sacramento Bypass; and

WHEREAS, the Department of Water Resources staff recommends the Board delegate to the Board Executive Officer the authority to execute a Deed conveying a 20' wide permanent non-exclusive access easement to PG&E for access purposes located within portions of property held in fee-title by SSJDD, acting by and through the Board, identified as Yolo County Assessor's Parcel Number 042-280-016; and

WHEREAS, the Board recognizes the granting of access rights to PG&E will not interfere with the maintenance and operation of existing and future Flood Control Works; and

WHEREAS, Board staff will review the final location of the easement prior to the execution and conveyance in order to ensure the access rights do not interfere with the board's current or anticipated use of the property.

NOW, THEREFORE, BE IT RESOLVED that the Board:

1. Approves the conveyance of a permanent non-exclusive access easement of a portion of a fee-title owned parcel held by SSJDD, acting by and through the Board, identified as Yolo County Assessor's Parcel No. 042-280-016 to PG&E for the purpose of ingress and egress to an electric transmission easement.

- 2. Delegates to the Board Executive Officer the authority to approve the final location and execute said Easement Deed along with any associated documents necessary for the real estate transaction.

Date: THE CENTRAL VALLEY FLOOD PROTECTION BOARD OF THE STATE OF CALIFORNIA

Approved as to Legal Form and Sufficiency By _____
Jay Punia, Executive Officer

BY _____ By _____
Jeremy Goldberg, Staff Counsel Francis I. Hodgkins, Secretary