

**Meeting of the Central Valley Flood Protection Board
June 24, 2011**

Staff Report – Letter to USACE

**West Sacramento Area Flood Control Agency
South Basin Projects, Yolo County**

1.0 – ITEM

Consider approval of a letter to the U.S. Army Corps of Engineers (Corps), in cooperation with the West Sacramento Flood Control Agency (Agency), to initiate a joint review of the Southport Early Implementation Project (EIP) to comply with the provisions of the National Environmental Policy Act (NEPA) and the California Environmental Quality Act (CEQA).

2.0 – PROJECT

West Sacramento Levee Improvement Program – Southport EIP will evaluate flood risk reduction management measures that advance WSAFCA's goal of achieving a minimum level of 200-year flood protection for the entire City and will reduce the flood risk to the City of West Sacramento located in Yolo County.

3.0 – LOCATION

The Sacramento River West-South Levee extends approximately 6 miles along the right (west) bank of the Sacramento River west levee approximately 3 miles downstream of the American River Outfall from the Barge Canal to the South Cross Levee.

4.0 – DESCRIPTION

WSAFCA and the Corps are partnering on a study to further flood protection improvements for the City of West Sacramento. The primary objective of the GRR is to determine the extent of Federal interest in reducing the flood risk within the study area while concurrently exploring opportunities to enhance recreation and the ecosystem along the Sacramento River within the study area.

The West Sacramento Area Flood Control Agency (WSAFCA) in partnership with the State is working to implement flood risk reduction management projects that advance their goal of providing a minimum level of 200-year flood protection to the City of West Sacramento. In order to quickly reduce the risk to the citizens of West Sacramento and the State tax payers WSAFCA has partnered with the State of California Department of Water Resources to implement much needed levee improvements under the State's

early implementation program in advance of the USACE completing the General Re-Evaluation Report for the West Sacramento Project.

WSAFCA is working to complete 3 EIP projects in partnership with the State before the end of 2011. WSAFCA completed levee improvements on the I Street Bridge site in 2008. The Rivers and CHP Academy EIP projects are currently on schedule to be constructed in 2011. The Southport project has been identified as the next EIP project that will be advanced by WSAFCA in partnership with the State.

WSAFCA is seeking to develop a project specific EIS/EIR for the Southport EIP to analyze broad environmental effects of all corrective action projects along the Sacramento River West-South Levee. Initiation of the NEPA/CEQA process and allocation of resources by the Corps to support this effort is a critical step to achieve WSAFCA's goal to go to construction on the Southport EIP in 2013.

Because the Board is the State agency that provides the Corps assurance for operation and maintenance of project levees and its partner in the management of flood control in the Central Valley, the Corps looks to the Board for assistance and initial determination in considering any changes or alterations to the project flood control works proposed by other parties. The request for initiating the preparation of an EIS/EIR would come from the Board.

5.0 – PROJECT BENEFITS

There is an urgent need for the early implementation project because the City is subject to an unacceptably high risk of flooding that could cause a catastrophic loss of life and property. The levees evaluated as part of the West Sacramento Levee Improvement Program protect over 11,000 acres of mixed-use land in eastern Yolo County. It is estimated that this area has a current population of 50,220 residents. A failure of the perimeter levee system could cause very deep inundation of the area plans and cause a major loss of the property at risk.

When the WSLIP is fully implemented, the levee improvements will provide the City with a minimum level of 200-year flood protection. This will greatly reduce the risk of flooding to the City and reduce the liability to the State taxpayers that a large flood would cause widespread flooding of this urban area.

6.0 – ADDITIONAL STAFF ANALYSIS

The CVFPB previously approved a request to have the Corps act as the lead agency under NEPA for the WSLIP programmatic EIS/EIR. Based on feedback from the State of California WSAFCA modified the programmatic EIS/EIR to provide project specific

environmental compliance for the Rivers and CHP Academy projects. The change was made to provide additional time for the State of California and the USACE to come to a common understanding of how compliance with the USACE vegetation policy will be met in California. The Record of decision and 408 permission for the CHP and the Rivers EIS is expected to be issued in June 2011. A new request to the USACE to act as the lead agency under NEPA for the Southport EIP is now needed to ensure that WSAFCA can meet their aggressive schedule and initiate construction on the Southport EIP in 2013 and further reduce the risk of flooding in the City of West Sacramento.

7.0 – STAFF RECOMMENDATION

Staff recommends that the Board approve sending the attached draft letter requesting the Corps to act as the lead agency under NEPA and initiate a joint review of the Southport EIP to comply with the provisions of the National Environmental Policy Act (NEPA) and the California Environmental Quality Act (CEQA) and to delegate the authority to the Executive Officer to sign the letter.

8.0 – LIST OF ATTACHMENTS

- A. Map of the City of West Sacramento EIP projects
- B. Draft Letter requesting the Corps to act as the lead agency under NEPA

CENTRAL VALLEY FLOOD PROTECTION BOARD

3310 El Camino Ave., Rm. 151
SACRAMENTO, CA 95821
(916) 574-0609 FAX: (916) 574-0682
PERMITS: (916) 574-2380 FAX: (916) 574-0682



June 14, 2011

Colonel William J. Leady
U.S. Army Corps of Engineers
1325 J Street, 14th Floor
Sacramento, California 95814

Subject: Draft Letter for CVFPB Staff Consideration

Dear Colonel Leady:

The West Sacramento Flood Control Agency (Agency) is currently advancing the Portions of the West Sacramento Levee Improvement Program in partnership with the State under the Early Implementation Program. The City's levee system is part of the Sacramento River Flood Control Project.

On behalf of the Agency, the Central Valley Flood Protection Board (Board) requests the U.S. Army Corps of Engineers (USACE), in cooperation with the Agency, to initiate a joint review of the Southport EIP to comply with the provisions of the National Environmental Policy Act (NEPA) and the California Environmental Quality Act (CEQA). The Board is also requesting that the Corps act as the lead agency under NEPA. The Agency will serve as the lead agency under CEQA.

The goal of the WSLIP is to achieve a minimum level of 200-year flood protection for the City of West Sacramento. The Board, on behalf of the Agency, will seek approval from the USACE to make the necessary alterations to the levee system to achieve the goal.

Since the Section 2003 needs to be modified to include projects that were not addressed in the original Partnership Agreement.

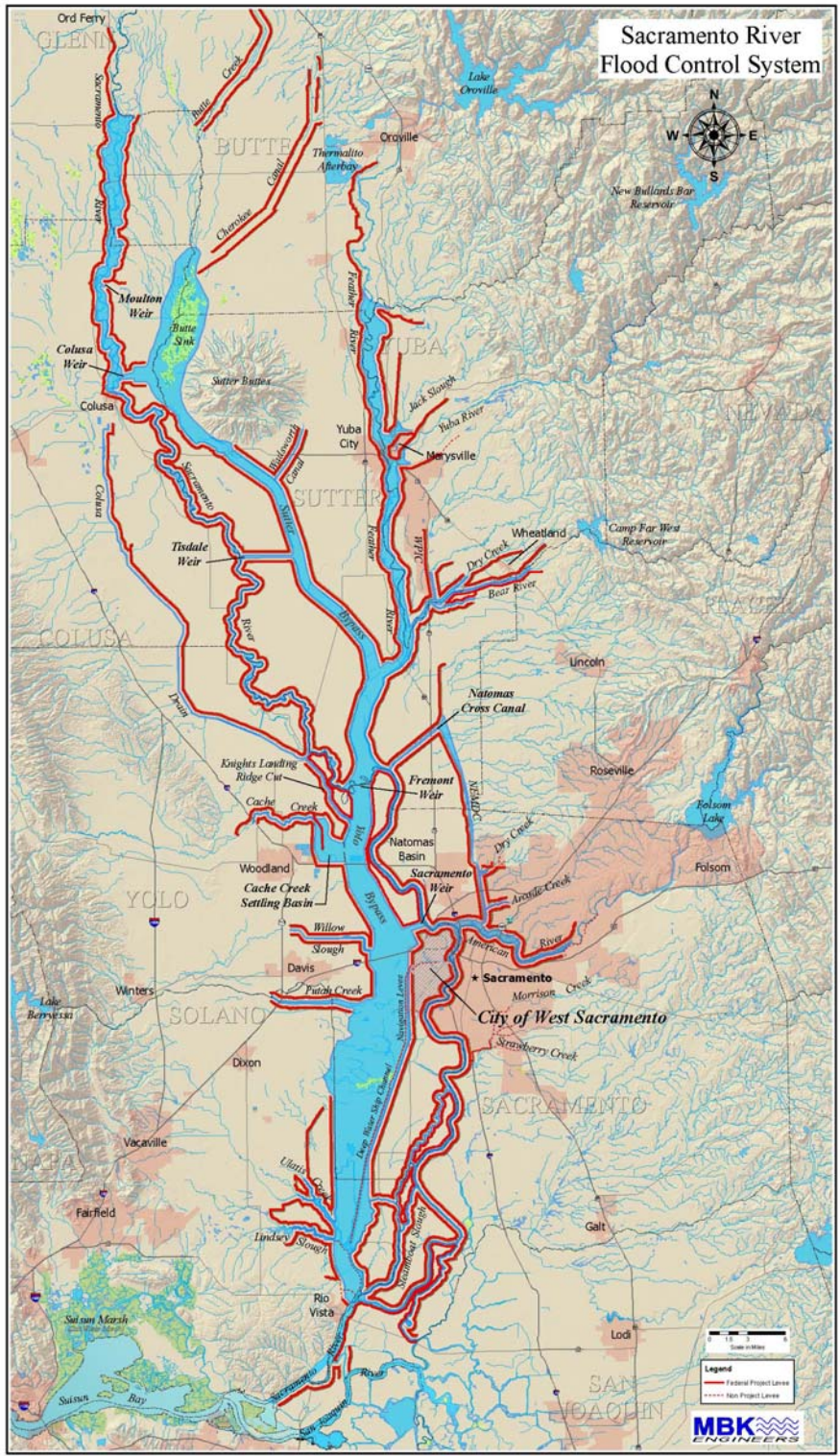
If you have any questions, please contact Dan Fua, Supervising Engineer, at (916) 574-0698, or via email at dfua@water.ca.gov, or James Herota, Staff Environmental Scientist at (916) 574-0651, or via email at jherota@water.ca.gov.

Sincerely,

Jay S. Punia
Executive Officer

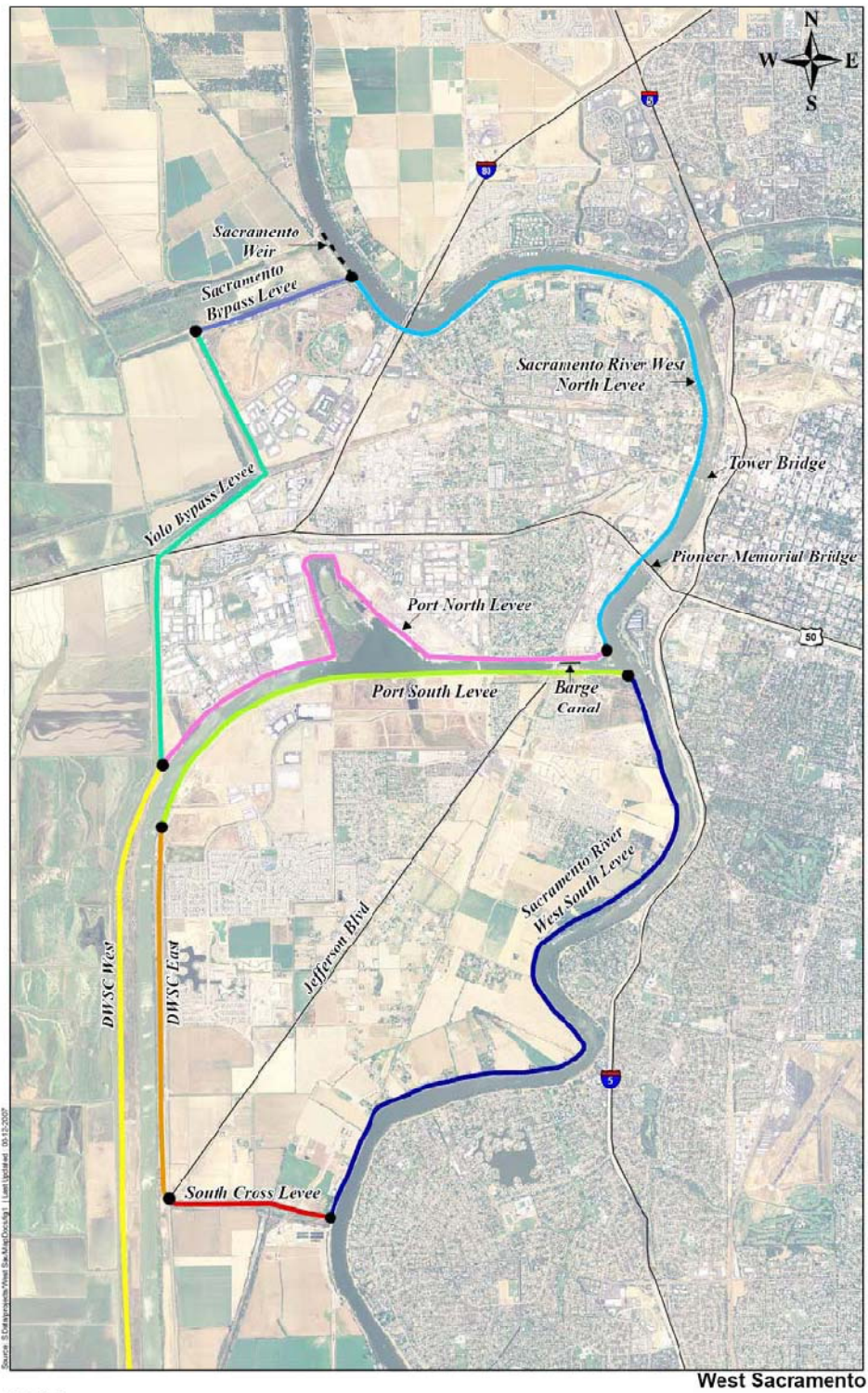
cc: Governor's Office of Planning and Research
State Clearinghouse
1400 Tenth Street, Room 121
Sacramento, California 95814

More detail on WSAFCA financial plan is provided in Section 5 of this report.



Source MBK Engineers

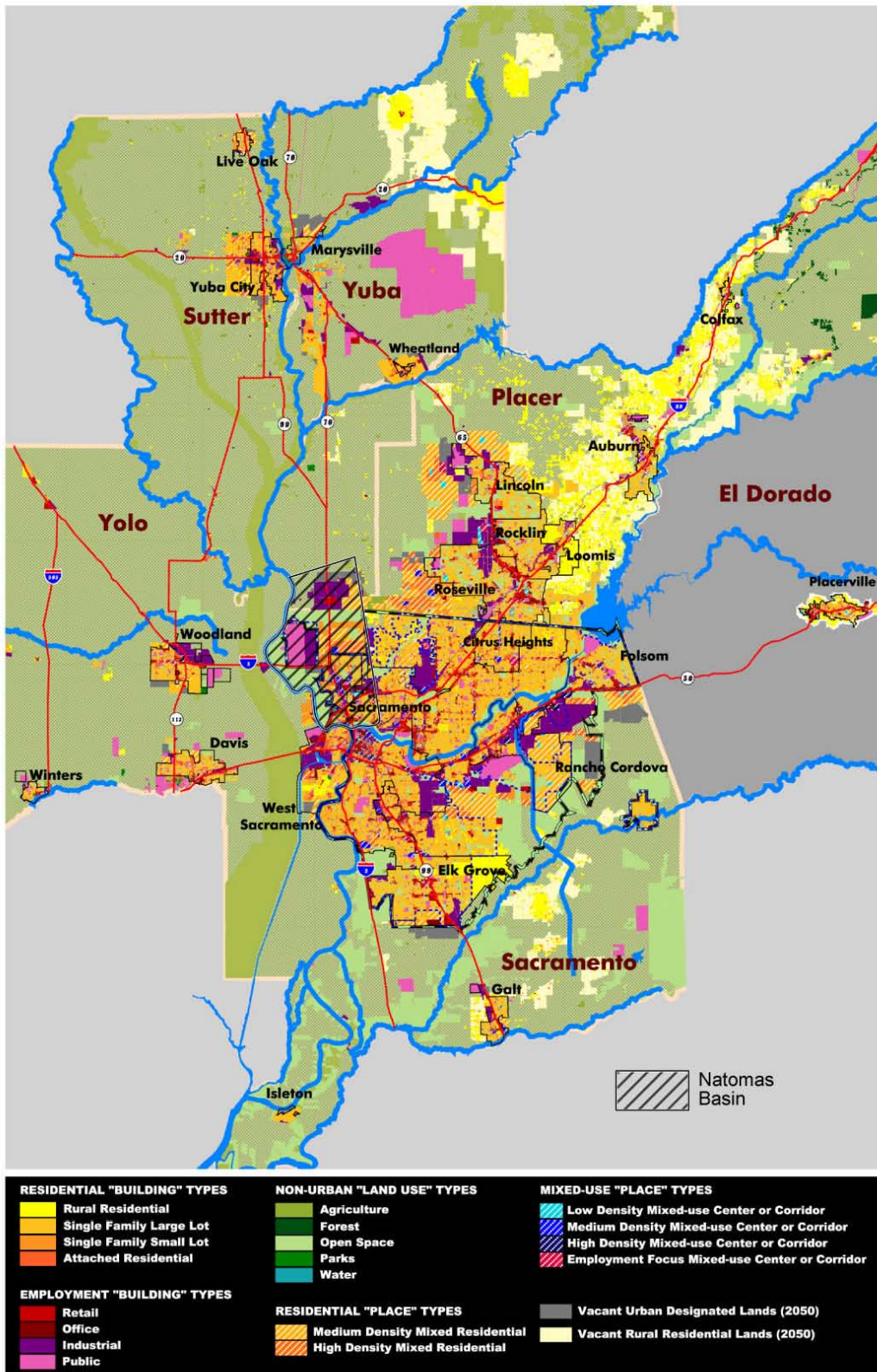
Plate 1: Sacramento River Flood Control Project & Project Location Map



HDR
 ONE COMPANY | Many Solutions

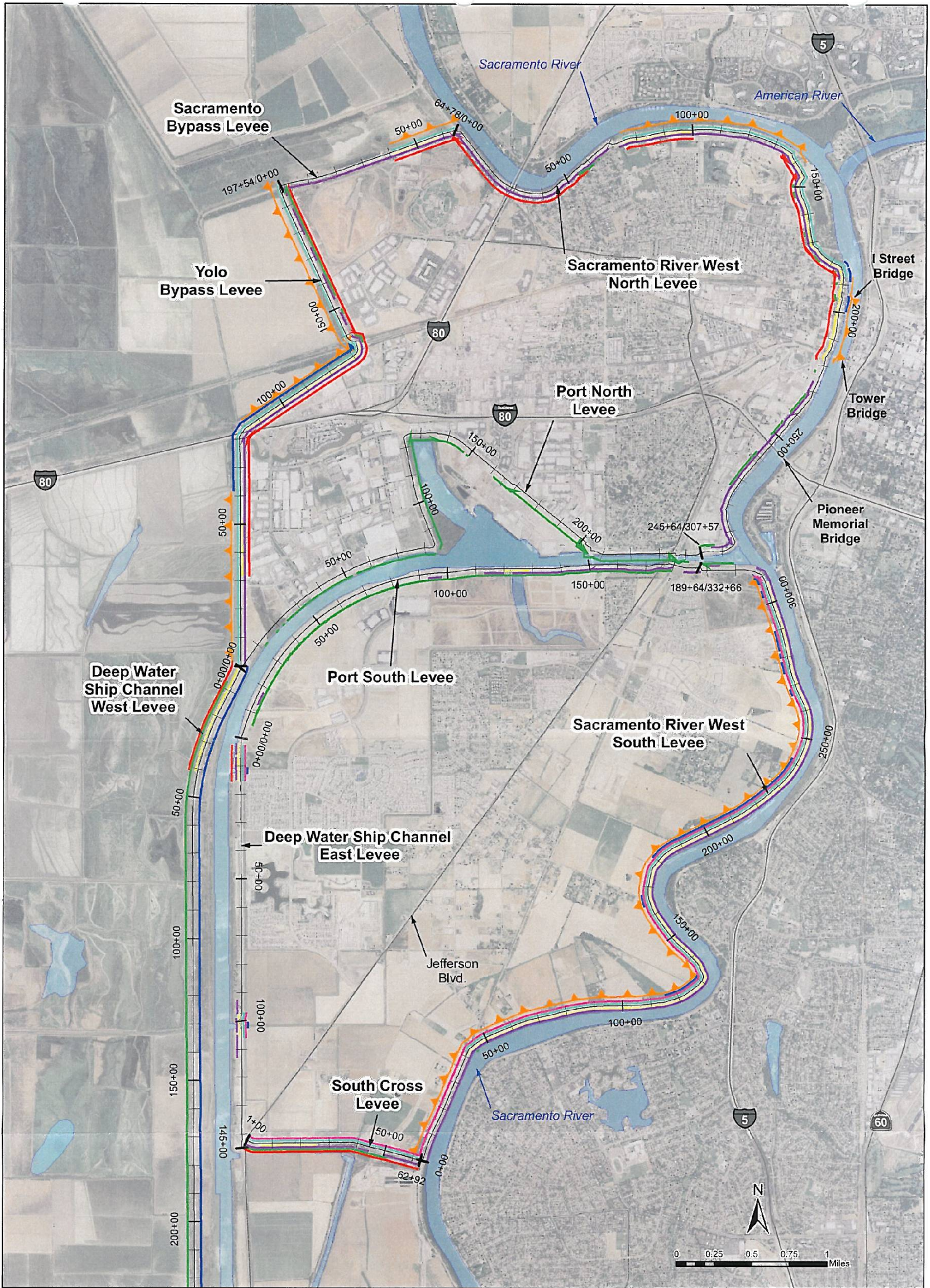
Source HDR Problem Identification Report

Plate 2: West Sacramento Levee Reaches



Source: SACOG and Valley Vision 2006, Sacramento Regional Blueprint

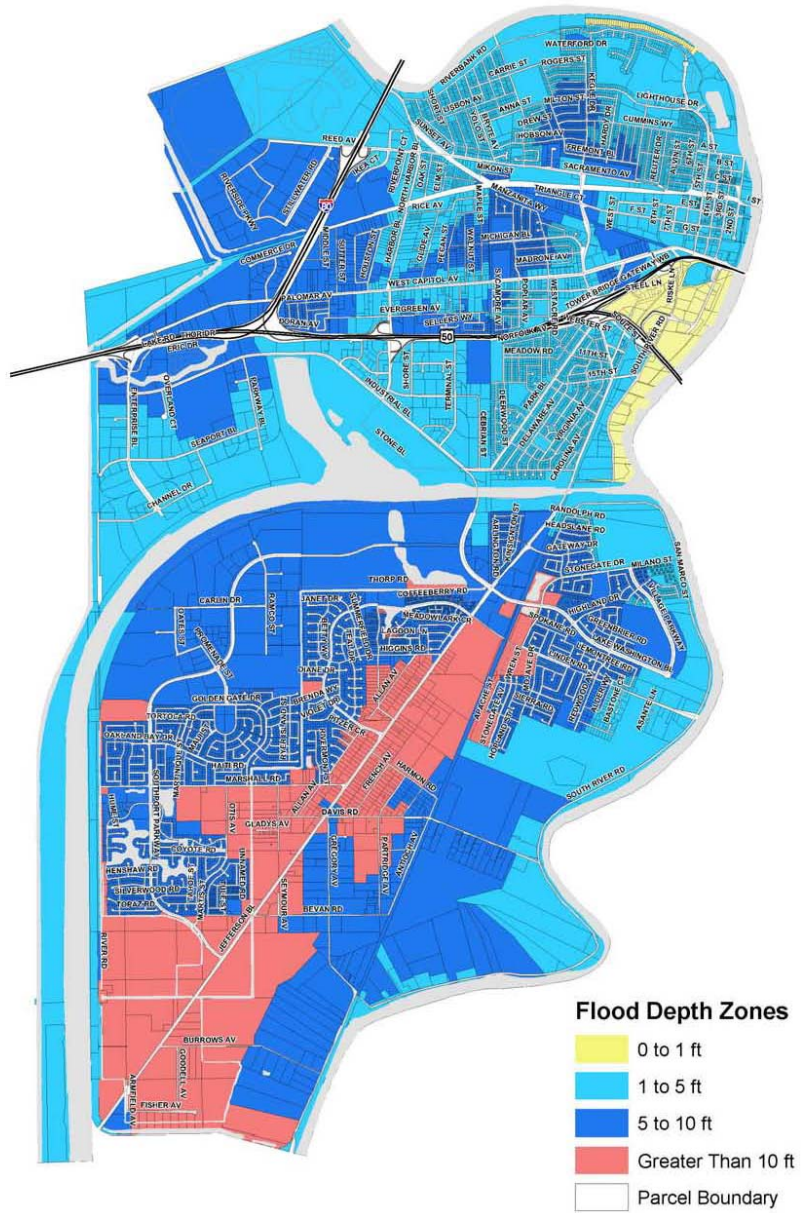
Plate 3: SACOG and Valley Vision 2006, Regional Blueprint Map



<p>Legend</p> <ul style="list-style-type: none"> — Levee Alignment — Rapid Drawdown Slope Stability — Steady State Slope Stability — Freeboard Deficiencies — Geometry — Erosion Sites — Through-seepage — Under-seepage ▲ Seismic 	<p>Notes: Information presented in this figure was taken from the following documents: 1. West Sacramento Levee Evaluation Project Draft Problem Identification Report (HDR, April 2008) 2. Phase 1 Geotechnical Evaluation Report, West Sacramento Region (DWR, November 2007) 3. West Sacramento Levee System, Geotechnical Problem Identification, California (Kleinfelder, September 2007) 4. Preliminary Seismic Evaluation, West Sacramento Levee Assessment Sacramento River, Reach 1 (Kleinfelder, June 2007) 5. Hydraulic Report for the City of West Sacramento Levee Alternatives Analysis (MBK Engineers 2007)</p>	<p>City of West Sacramento, CA Levee Evaluation Program Draft Alternatives Analysis</p>	
		<p>Levee Deficiencies - 0.5% annual chance flood (200-yr event)</p>	
<p>HDR ONE COMPANY Many Solutions™</p>	<p>EIT: B.B. GIS: C.P. QC/GA: T.F.</p>	<p>Date Created: 1.27.2009</p>	<p>Figure 11</p>

Source HDR Draft Alternative Analysis Report
Plate 4: 200-year Levee Deficiencies

FLOOD DEPTH ZONES



Source PB America WSAFCA Final Engineers Report, July 16, 2007

Plate 5: WSAFCA Flood Depth Zones (100-year event)

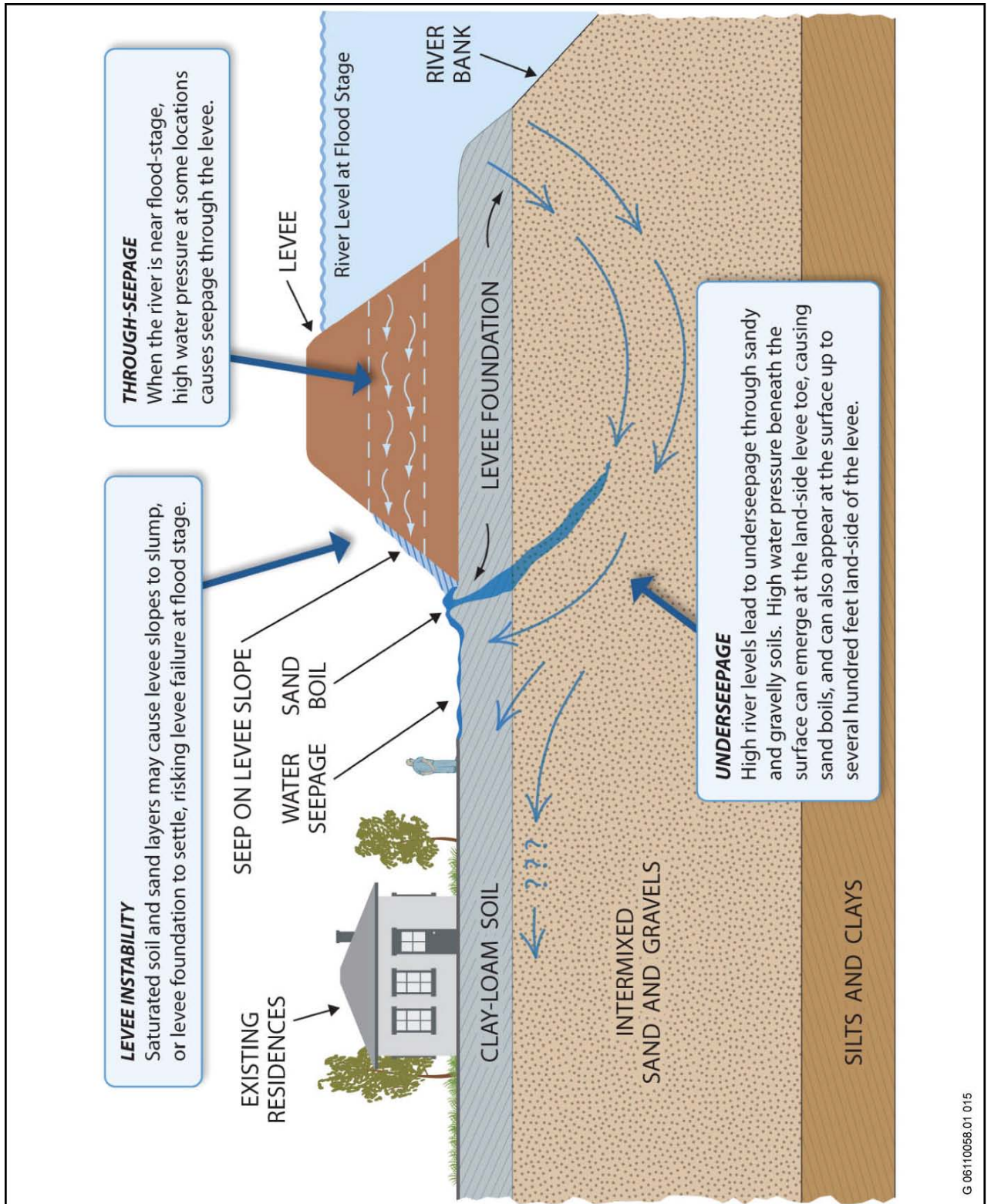
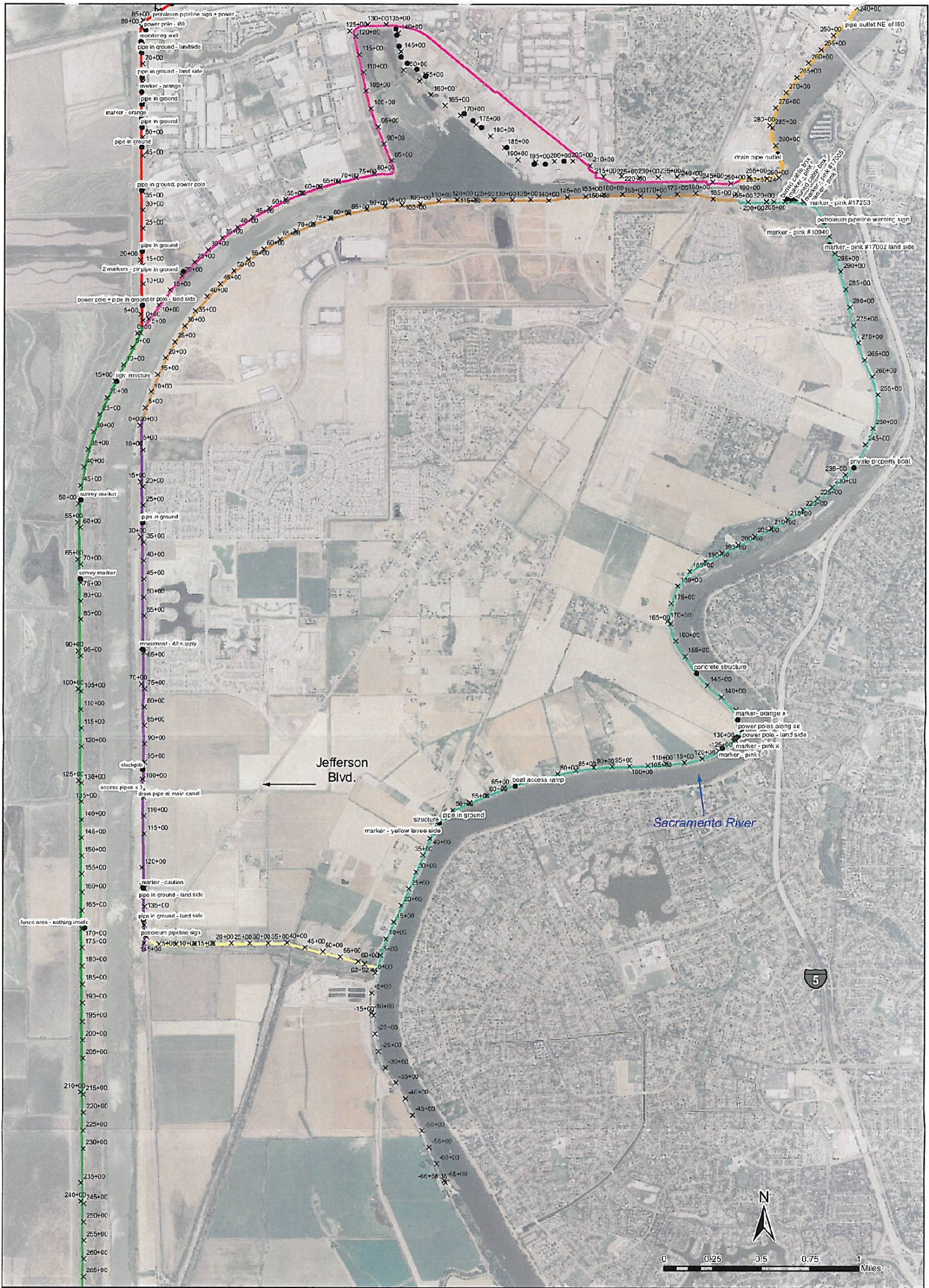


Plate 6: Underseepage and Through-Seepage Levee Risks



Legend

- Encroachment Point
- Port North Levee
- Port South Levee
- South Cross Levee
- Yolo Bypass Levee
- Deep Water Ship Channel East Levee
- Deep Water Ship Channel West Levee
- Sacramento Bypass Levee
- Sacramento River West North Levee
- Sacramento River West South Levee

City of West Sacramento, CA
 Levee Evaluation Program
 Draft Alternatives Analysis

**Utility Levee Encroachments
 South Basin**

EIT: E.B.
 GIS: C.P.
 QC/QA: T.F.

Date Created
 1.27.2009

Figure 10.2

G:\44683 WestSacMapDocs\Final_maps 12.22.08



Source HDR Draft Alternative Analysis Report
Plate 7: Utility Levee Encroachments South Basin



**SACRAMENTO RIVER SOUTHPORT
EARLY IMPLEMENTATION PROJECT**
April 13, 2011

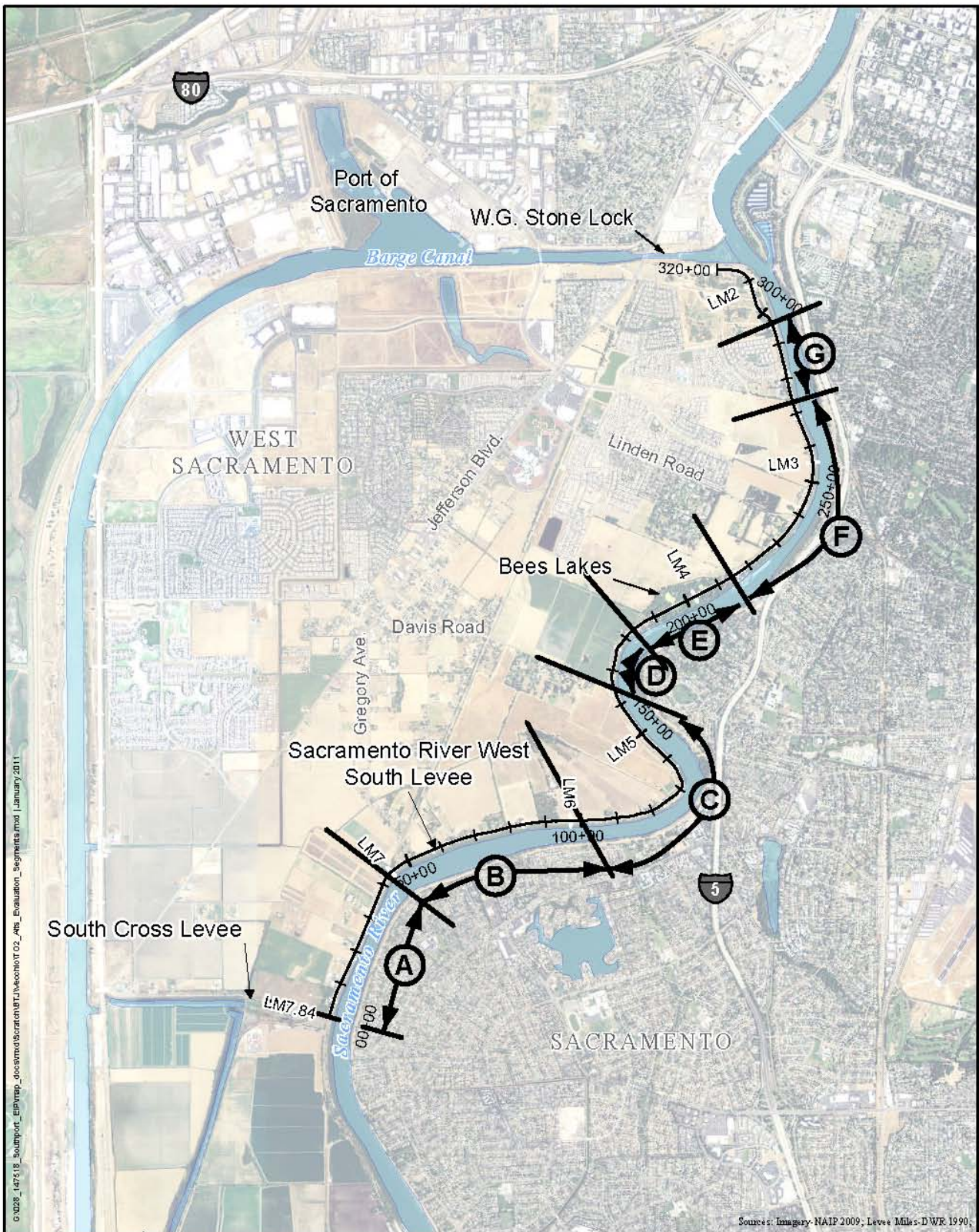
ID	Task Name	Duration	Start	Finish	2011				2012				2013				2014				2015			
					Qtr 2	Qtr 3	Qtr 4	Qtr 1	Qtr 2	Qtr 3	Qtr 4	Qtr 1	Qtr 2	Qtr 3	Qtr 4	Qtr 1	Qtr 2	Qtr 3	Qtr 4	Qtr 1	Qtr 2	Qtr 3	Qtr 4	
1	EIS/EIR - Southport EIP	512 days	Tue 2/15/11	Wed 1/30/13																				
2	Project Level EIS/R - Intro and Project Description	149 days	Tue 2/15/11	Sat 9/10/11																				
16	Administrative Draft EIS/R	223 days	Thu 6/23/11	Mon 4/30/12																				
31	Public Draft EIS/R	40 days	Tue 5/1/12	Mon 6/25/12																				
40	Final EIS/R	79 days	Tue 6/26/12	Fri 10/12/12																				
50	CEQA Approval Process	25 days	Fri 10/12/12	Fri 11/16/12																				
55	NEPA Approval Process	78 days	Mon 10/15/12	Wed 1/30/13																				
60	PERMITTING - Southport EIP	394 days	Thu 9/8/11	Tue 3/12/13																				
61	2081 CESA Compliance - CDFG	172 days	Thu 3/22/12	Fri 11/16/12																				
68	Section 1600 SAA - CDFG	172 days	Thu 3/22/12	Fri 11/16/12																				
75	Central Valley Flood Protection Board Actions	257 days	Thu 2/23/12	Fri 2/15/13																				
90	Section 408	154 days	Thu 8/9/12	Tue 3/12/13																				
104	Section 404	297 days	Thu 9/8/11	Fri 10/26/12																				
121	Section 7 Consultation - USFWS/NFMS ESA	207 days	Thu 11/17/11	Fri 8/31/12																				
128	Fish and Wildlife Coordination Act - USFWS/NFMS	70 days	Fri 5/25/12	Thu 8/30/12																				
132	Section 401 - RWQCB CWA	156 days	Thu 3/22/12	Thu 10/25/12																				
139	Section 106 - SHPO NHPA	83 days	Thu 3/22/12	Mon 7/16/12																				
147	Yolo County SMARA Permit (ASK VECCHIO WHOSE IN LEAD)	117 days	Thu 3/22/12	Fri 8/31/12																				
155	REAL ESTATE - Southport EIP	584 days	Wed 2/2/11	Mon 4/29/13																				
156	Right of Entry (ROE)	91 days	Wed 2/2/11	Wed 6/8/11																				
171	Right of Way Acquisition	342 days	Fri 1/6/12	Mon 4/29/13																				
172	2013 Construction	342 days	Fri 1/6/12	Mon 4/29/13																				
173	Acquisition Surveys	55 days	Fri 1/6/12	Thu 3/22/12																				
178	Appraisal Process	90 days	Thu 2/2/12	Thu 6/7/12																				
184	Negotiation Process	116 days	Fri 6/22/12	Fri 11/30/12																				
194	Possession via Eminent Domain (if necessary)	106 days	Fri 11/30/12	Mon 4/29/13																				
201	DESIGN - Southport EIP	623 days	Sun 8/1/10	Wed 12/19/12																				
202	Preliminary Design	313 days	Sun 8/1/10	Wed 10/12/11																				
314	Levee Improvement Design	310 days	Thu 10/13/11	Wed 12/19/12																				
315	Survey	60 days	Thu 10/13/11	Wed 1/4/12																				
316	Design Surveys	60 days	Thu 10/13/11	Wed 1/4/12																				
323	Environmental & Cultural Surveys	60 days	Thu 10/13/11	Wed 1/4/12																				
329	Geotechnical Basis of Design Report	113 days	Thu 10/13/11	Mon 3/19/12																				
334	Basis of Design	35 days	Thu 10/13/11	Wed 11/30/11																				
339	PLANS, SPECIFICATIONS AND ESTIMATES	310 days	Thu 10/13/11	Wed 12/19/12																				
340	60 Percent PS&E	140 days	Thu 10/13/11	Wed 4/25/12																				
349	90 Percent PS&E	95 days	Thu 3/22/12	Wed 8/1/12																				
358	100 Percent PS&E	70 days	Thu 8/2/12	Wed 11/7/12																				
363	Submit Final Bid Set	0 days	Wed 11/7/12	Wed 11/7/12																				
364	Final Opinion of Probable Construction Cost	30 days	Thu 11/8/12	Wed 12/19/12																				
368	ENCROACHMENT COORDINATION	40 days	Thu 2/2/12	Wed 3/28/12																				
371	CONSTRUCTION - Southport EIP	531 days	Fri 10/19/12	Fri 10/31/14																				
372	Bid Process	75 days	Fri 10/19/12	Thu 1/31/13																				
378	Award Contract	9 days	Wed 3/13/13	Mon 3/25/13																				
382	Construction	419 days	Tue 3/26/13	Fri 10/31/14																				

Project: 2011 0413 DWR Southport EIP
Date: Wed 4/13/11

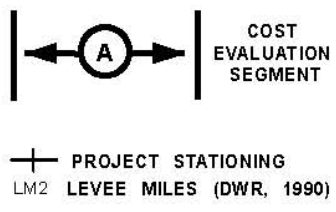
Task Progress Summary External Tasks Deadline

Split Milestone Project Summary External Milestone

Plate 8: Sacramento River Southport EIP Schedule



WSAFCA West Sacramento Area Flood Control Agency
Levee Improvement Program Southport Early Implementation Project
Project Manager M. VECCHIO, HDR
Designed M. VECCHIO, HDR
Checked
Drawn B. JONES, HDR

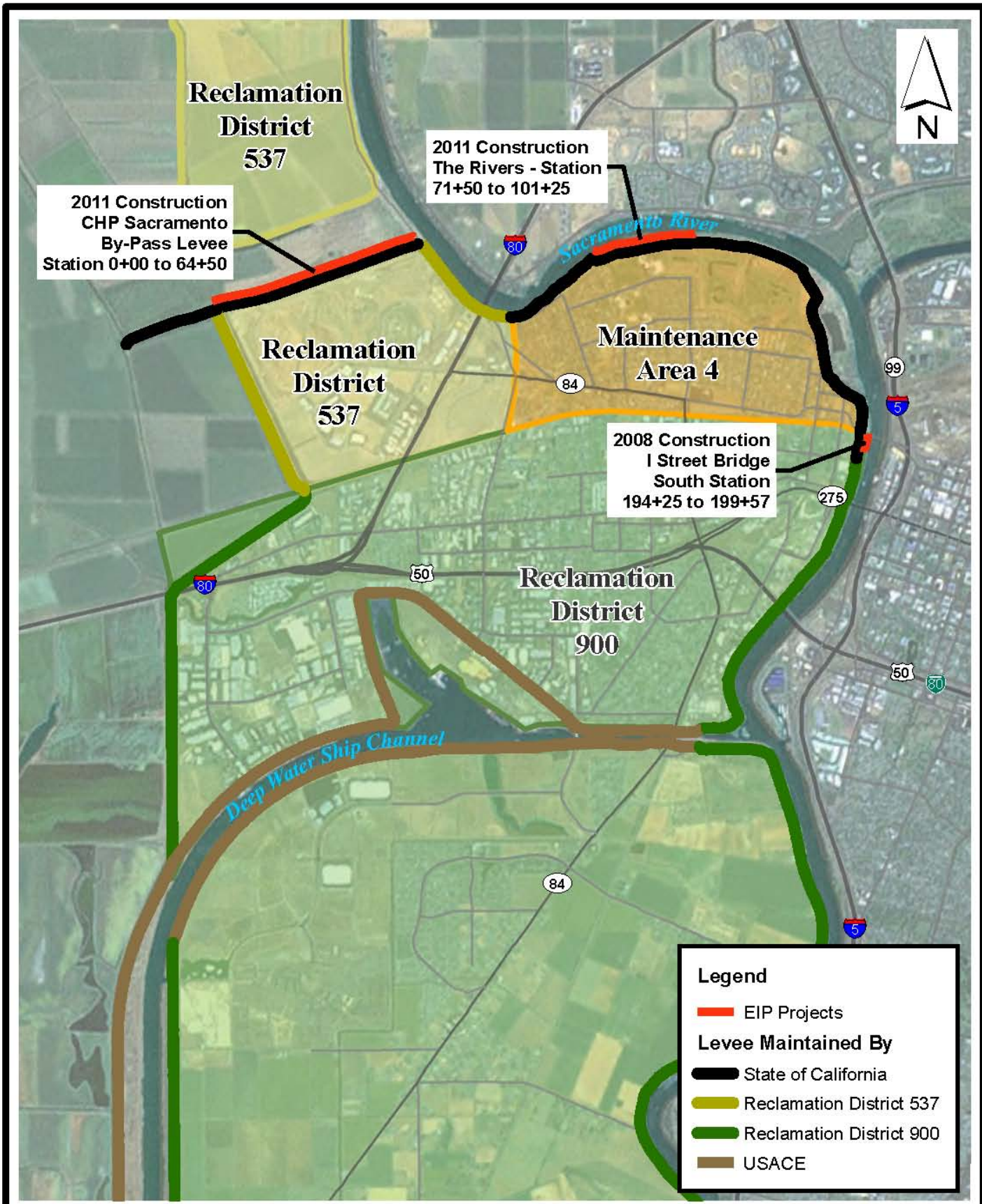


TO #2 Proposed Project Alternatives and Evaluation Segments

Project Num: 453318-147518-028
April 2011

0 1000 2000 3000 4000
Feet
1 in ch = 4,000 feet

Plate 9: Southport EIP Evaluation Segments



Flood Control Facilities Operations and Maintenance Responsibilities within the City of West Sacramento

