



Culvert Replacement Project

WESTERN PACIFIC INTERCEPTOR CANAL CULVERT REPLACEMENT PROJECT

Initial Study / Mitigated Negative Declaration

December 15, 2017

Presented By: Ruth Darling
Board Staff



Board Action

Consider adoption of Resolution 2017-12 to:

- ⦿ Approve the Western Pacific Interceptor Canal (WPIC) Culvert Replacement Project (Project)
- ⦿ Adopt the WPIC Culvert Replacement Project Final Initial Study/Mitigated Negative Declaration (IS/MND)
- ⦿ Adopt the Mitigation Monitoring and Reporting Plan (MMRP)
- ⦿ Direct the Executive Officer to take the necessary actions to prepare and file a Notice of Determination (NOD) pursuant to CEQA

Proposed Project



- ◎ The purpose of this Project is to remove and replace a failed drainage culvert located on Sacramento-San Joaquin Drainage District (SSJDD) property, through the eastern embankment of the WPIC. The culvert has a corroded inlet that has collapsed and is no longer conveying water adequately.
- ◎ A sink hole exists in the vicinity of the failed culvert, roughly spanning from the inlet structure to the embankment crown.

Project Location



- ◎ The Project is located in Yuba County, near the town of Arboga and Plumas Lake subdivision
- ◎ The project site extends roughly from Plumas Arboga Road north ~450 feet.
- ◎ Located on land owned in fee by SSJDD (Parcel No. 014-400-014-000)



Central Valley Flood
Protection Board



 Project Location

Western Pacific Interceptor Canal
Culvert Replacement Project
Project Vicinity Map

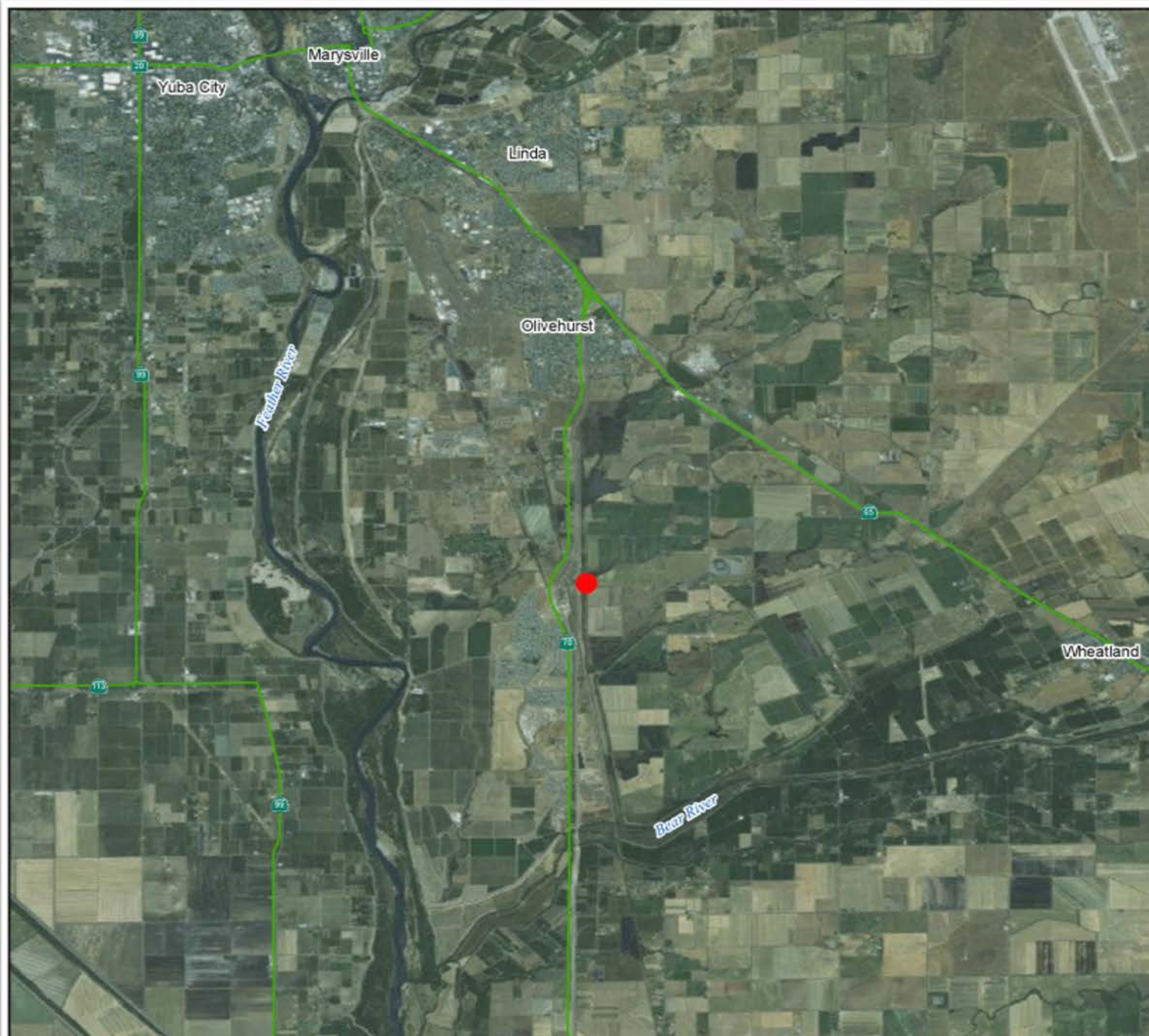
Wetland Delineation Report

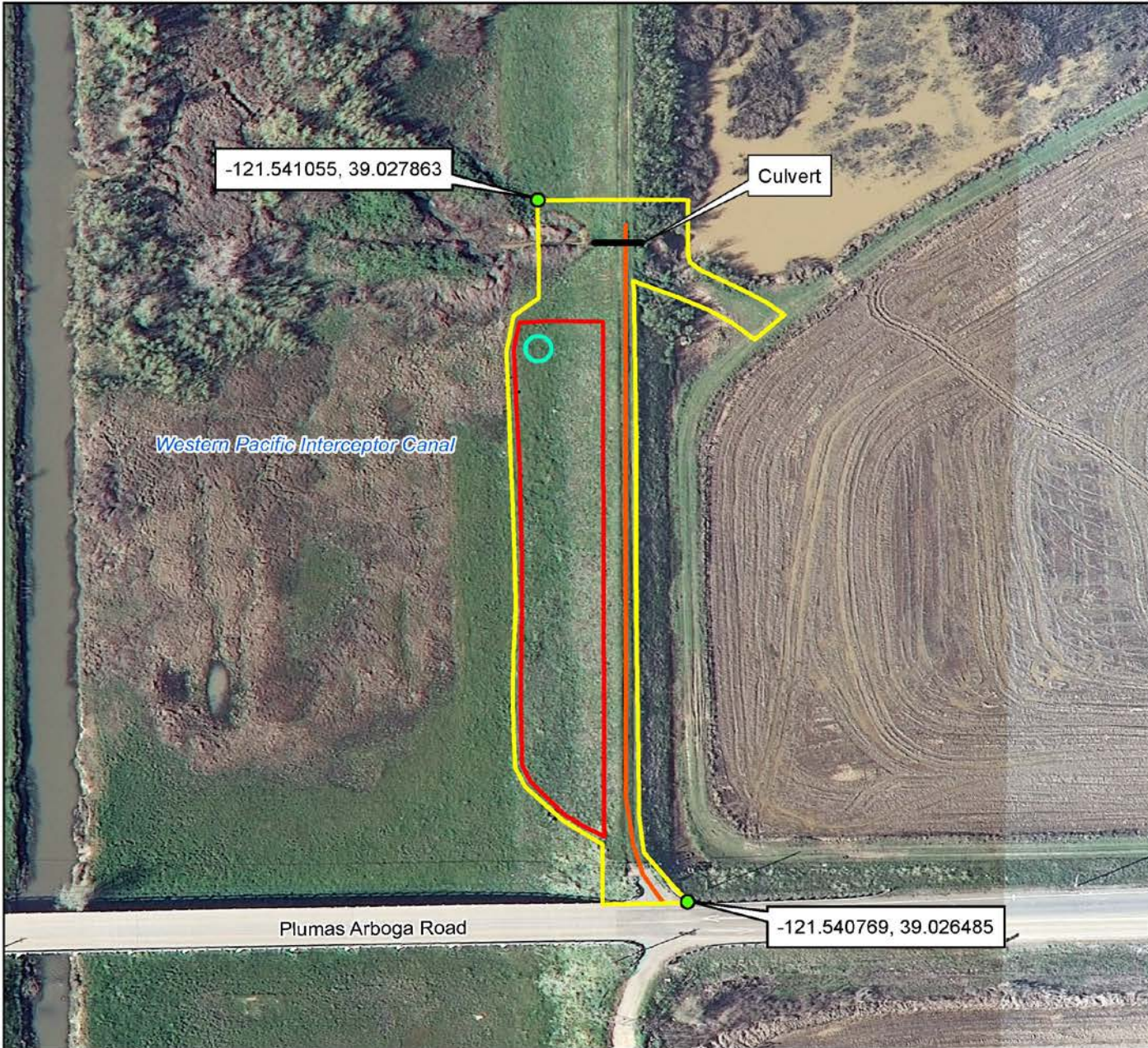


Date: March 13, 2015

File:G:\Projects\WesternPacificInterceptor
Canal\pipe replacement\Wetland
Delineation\vicinity_map

Prepared By: Melanie Powers





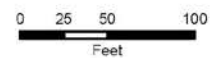
Central Valley Flood Protection Board



- Staging Area
- Spoil Area
- Project Boundary
- Haul Route

Western Pacific Interceptor Canal
Culvert Replacement Project
Site Plan Map

Wetland Delineation Report
1 inch = 100 feet



Date: January 22, 2015
File:
G:\Projects\WesternPacificInterceptor
Canal\pipe replacement\Site_Plan_map
Prepared By: Melanie Powers

WPIC looking north



WPIC looking south





Failed culvert

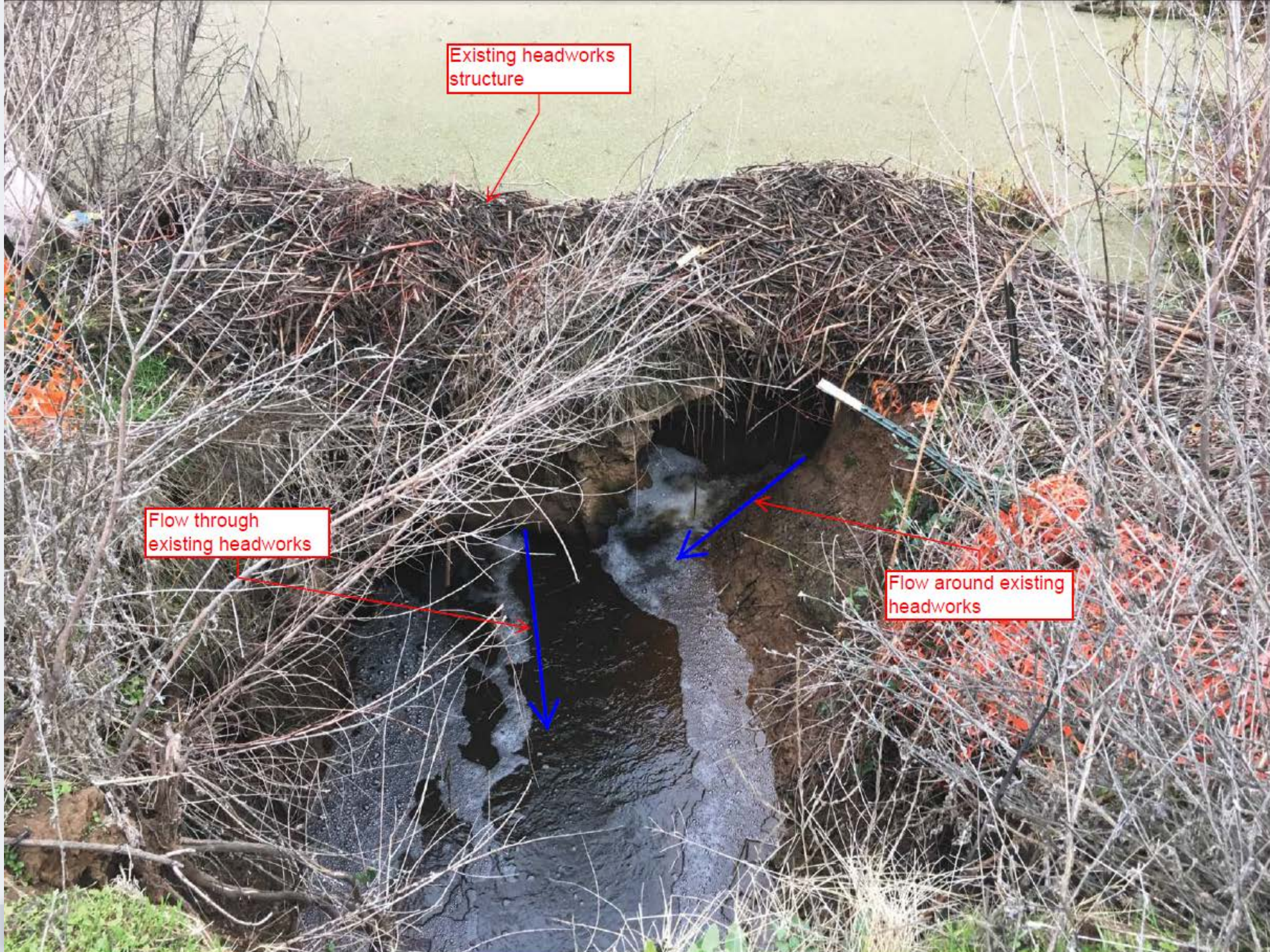


Landside headwall
to be replaced

Existing headworks structure

Flow through existing headworks

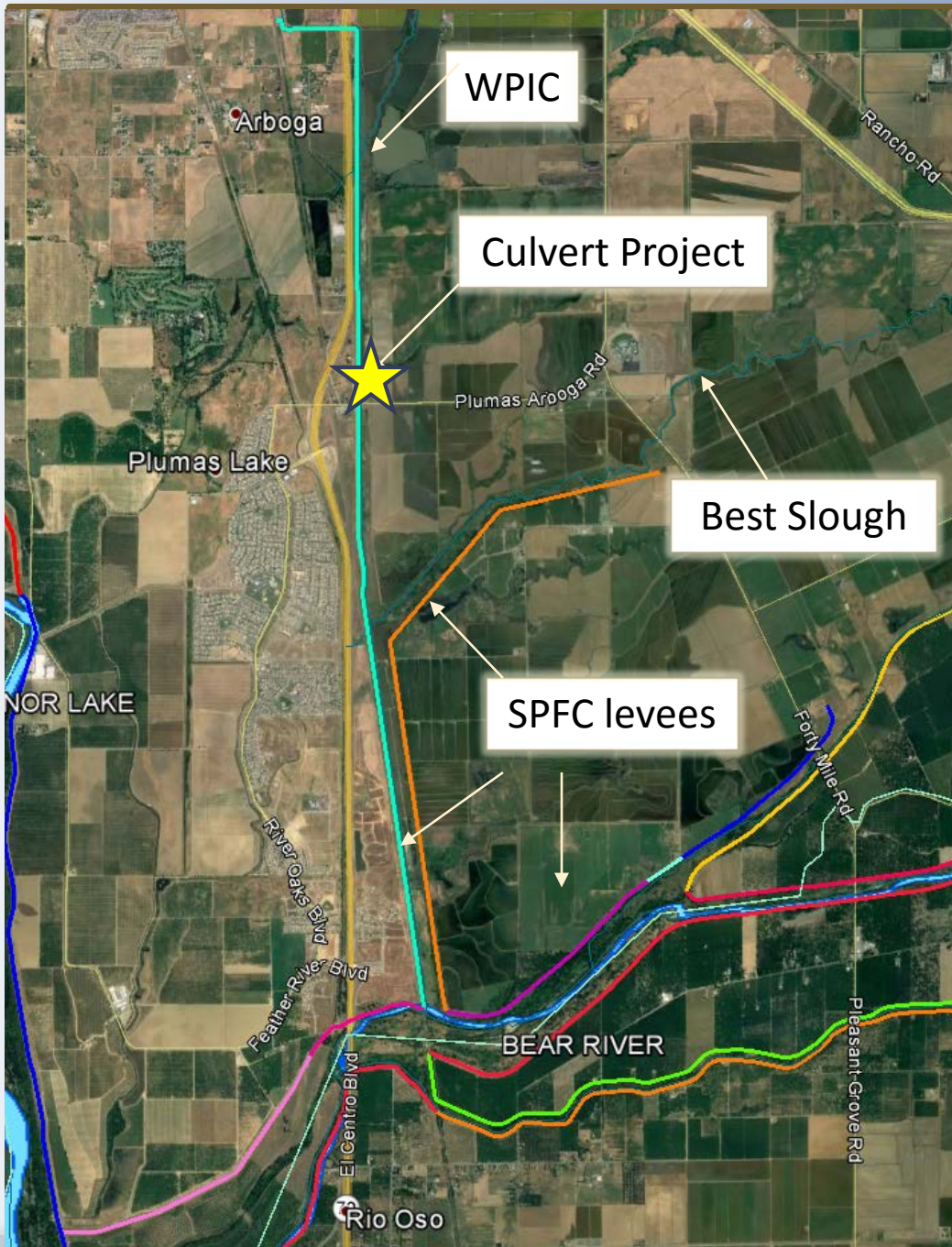
Flow around existing headworks





Background

- ◎ The WPIC is part of the United States Army Corps of Engineers (USACE) federal Sacramento River Flood Control Project.
- ◎ Lands were acquired as part of the Sacramento River Flood Control Project circa 1941
- ◎ Flowage easements to the east of the WPIC
- ◎ The eastern embankment of the WPIC is not considered part of the State Plan of Flood Control



WVIC and surrounding SPFC facilities

SPFC Levee

Eastern Embankment

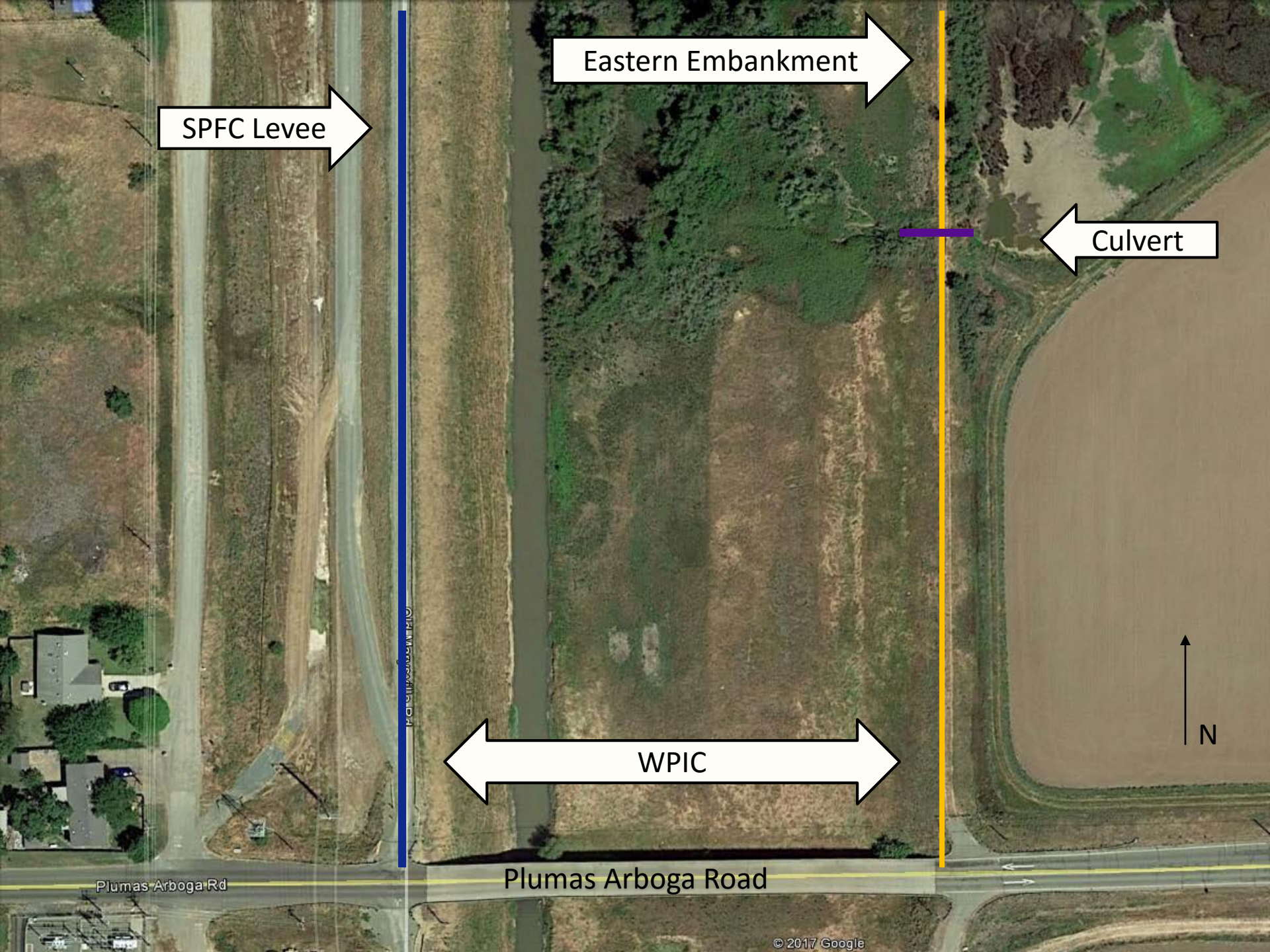
Culvert

WPIC

N

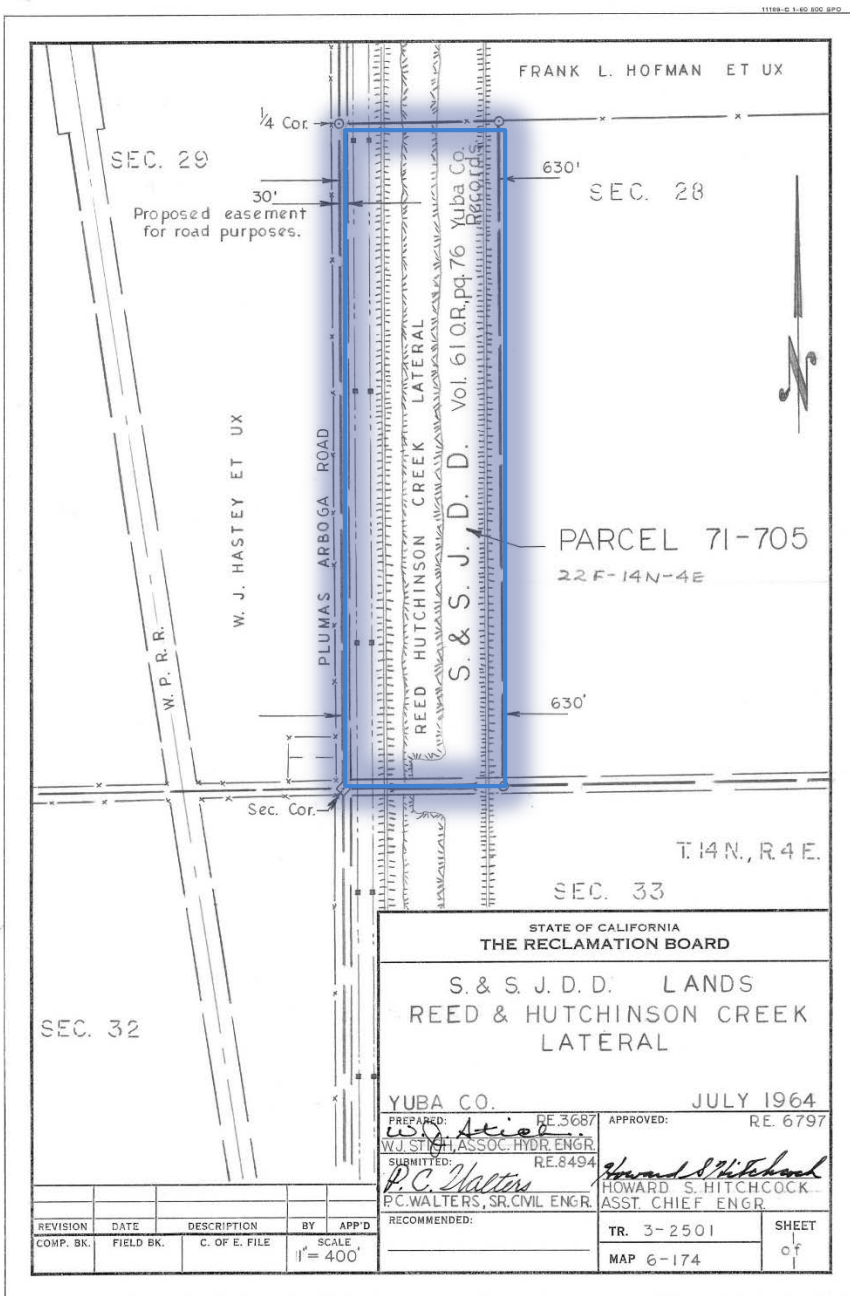
Plumas Arboga Rd

Plumas Arboga Road

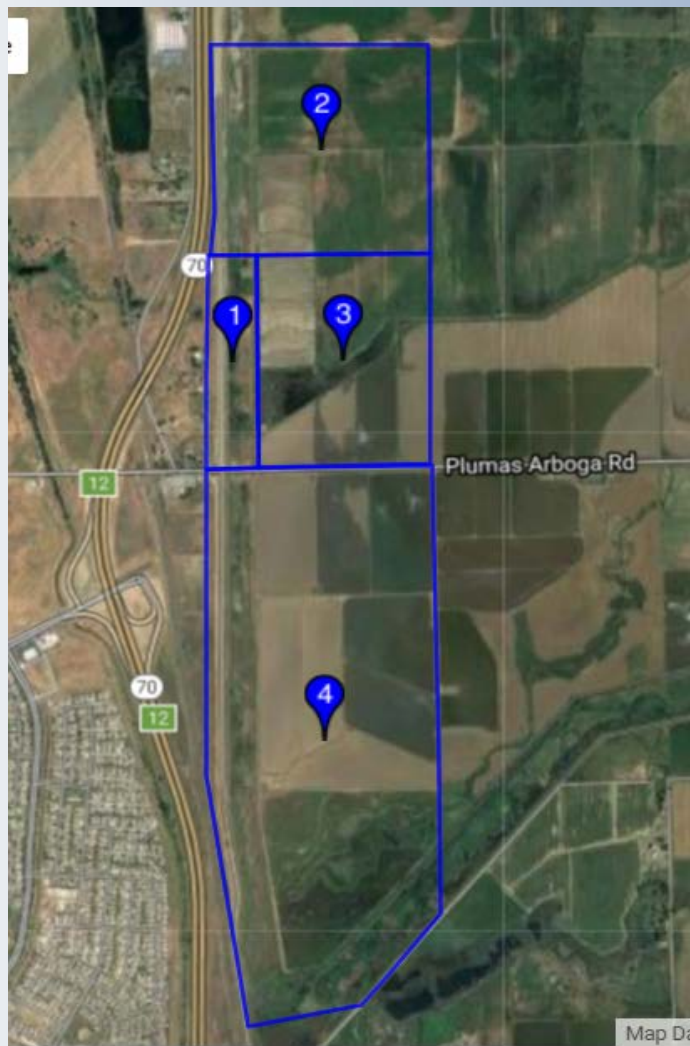




SSJDD parcel
 Parcel approximately
 38.2 acres



Land Owners



- Parcel 1 – SSJDD
- Parcel 2 – Latigo Farms LLC
- Parcel 3 – Latigo Farms LLC
- Parcel 4 – Rue & Forsman Real Estate LLC
 - Rue & Forsman Ranch, rice farms
- Parcels west and adjacent to the SSJDD parcel are various land owners (5), generally residential



Project Description

- ⦿ The Board plans to contract with DWR's Sutter Maintenance Yard to perform the construction activities.
- ⦿ Construction is planned for Summer, 2018
- ⦿ Remove and replace approximately 80 linear feet of 24-inch diameter corrugated metal pipe (CMP).
- ⦿ The pipe will be replaced with approximately 80 linear feet of 24-inch of reinforced concrete pipe (RCP). The RCP pipe will be installed in accordance with California Code of Regulations (CCR) Title 23 standards for pipelines through a levee.
- ⦿ Replacement of the landside concrete headwall and installation of a new trash rack and flash board weir.



Project Description cont'

- ⦿ Installation of a new waterside concrete headwall with a new gate riser structure with positive shutoff device at the waterside hinge of the embankment.
- ⦿ The haul road on the embankment will be resurfaced with gravel from Plumas Arboga Road approximately 450 feet to the project location.
- ⦿ Native grass reseeding to prevent embankment erosion and to restore the project site to pre-project conditions.
- ⦿ A new pipe gate shall be installed at the entrance onto the levee crown from Plumas Arboga Road.

Initial Study/Mitigated Negative Declaration



- ◎ A Draft IS/MND was prepared and released for a 30-day public review period on October 27, 2015
- ◎ One comment letter was received from the Regional Water Quality Control Board stating the Project may need a 401 Water Quality Certification.
- ◎ The Final IS/MND is currently posted on the Board's website and will be posted under the Public Notice webpage once the Board certifies the CEQA document and approves the project.

Mitigation Monitoring and Reporting Plan



- ◎ Staff is requesting the Board consider adopting the MMRP
- ◎ Mitigation Measures have been developed to reduce potential impacts to less-than-significant levels for the following areas:
 - Air Quality, Biological Resources, Cultural Resources, Hazards and Hazardous Materials, and Hydrology and Water Quality



Anticipated Permits & Approvals

- ◎ USACE Clean Water Act Section 404 permit
- ◎ Clean Water Act Section 401 Water Quality Certification from the California Regional Water Quality Control Board, Central Valley Region
- ◎ U.S. Fish and Wildlife Service Federal Endangered Species Act compliance
- ◎ National Historic Preservation Act Section 106 compliance
- ◎ California Department of Fish and Wildlife Streambed Alteration Agreement
- ◎ California Endangered Species Act Incidental Take Permit

Anticipated Permits, Approvals and Decisions, cont'



- © U.S. Army Corps of Engineers has determined that this project is considered maintenance as the existing drainage facility is identified on the 'levee as constructed drawings' for the Sacramento River Flood Control Project
- © Therefore, Section 408 approval is not required.
- © As constructed drawings, September 1941.

Anticipated Permits, Approvals and Decisions, cont'



- ◎ CDFW Incidental Take Permit (ITP) for potential impacts to giant garter snake (GGS)
- ◎ Appropriate GGS mitigation ratios will be negotiated with CDFW during the ITP permitting process
 - Goal is no net loss of GGS habitat
- ◎ Mitigation credits will likely be purchased at Westervelt Ecological Services at the Sutter Conservation Bank



Cultural and Archeology

- ◎ Field survey, coordination with historical societies and Native American tribal members and preparation of the confidential archeology survey report was conducted by Monica Nolte, DWR's Associate Environmental Planner (Archeology).
- ◎ Outreach with Native American community initiated in January 2015.
- ◎ Letters were sent to 13 Native American individuals representing 7 tribal organizations on January 26, 2015.
 - Representatives from 1 tribal council and 1 tribe requested construction start dates.
 - Representatives from 2 tribes stated they had no concerns about the Project.
 - No responses were received from 3 tribes.

Funding



- ◎ The Project will cost approximately \$261,000.00.
- ◎ The funding source will be the Department of Water Resources, as directed by the California Department of Finance.



CEQA Conclusions

- ◎ The analysis set forth in the IS/MND found the Project would not have any significant adverse effects on the physical environment after implementation of mitigation measures.
- ◎ The proposed Project could have potentially significant impacts on air quality, biological resources, cultural resources, hazards and hazardous materials, hydrology and water quality but mitigation measures are proposed to avoid or reduce these effects to less-than-significant levels.

Staff Recommendation



Board adopt Resolution No. 2017-12 which constitutes the Boards written findings and decision in the matter of the WPIC Culvert Replacement Project. The Resolution contains the following:

- ⦿ Approval of the WPIC Culvert Replacement Project
- ⦿ Adoption of the Final IS/MND
- ⦿ The Board's CEQA Findings
- ⦿ Adoption of the MMRP
- ⦿ And an order to direct the Executive Officer to take necessary action to prepare and file a Notice of Determination with the State Clearinghouse.

QUESTIONS



Presented by: Ruth Darling, Board Staff