

# **LOI/SWIF Plan for DWR State Maintained Areas**

2015

Mark List



# FMO's Goals for LOI/SWIF Implementation

1. Improve Levee Maintenance and Reduce Flood Risk
2. Access to Section 7 Nexus
3. Regain Active Status in PL84-99



# Prioritization

- Selection Criteria
  - Population Protected
  - Infrastructure Protected
  - DWR Sole Maintainer
  - Miles of GGS Habitat

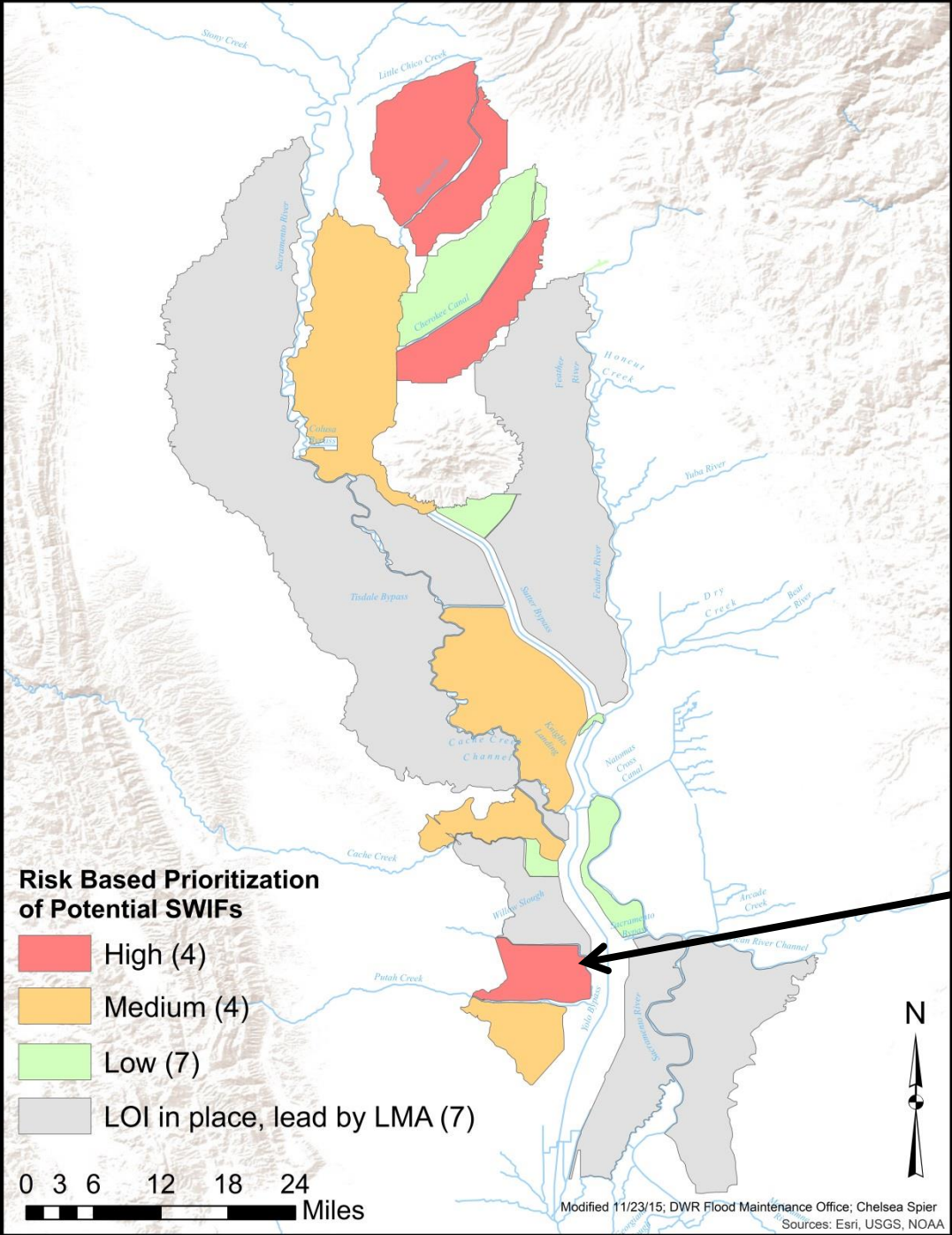


# Summary of Potential DWR SWIF Areas

- 22 total
  - 7 LOIs have already been submitted or are being drafted (Lead by other LMAs)
- Of the 15 areas where SWIFs have not been started
  - 5 are maintenance areas (WC 12878)
  - 10 are WC 8361 responsibilities
  - 11 DWR is the sole maintainer



# High Priority SWIF Areas



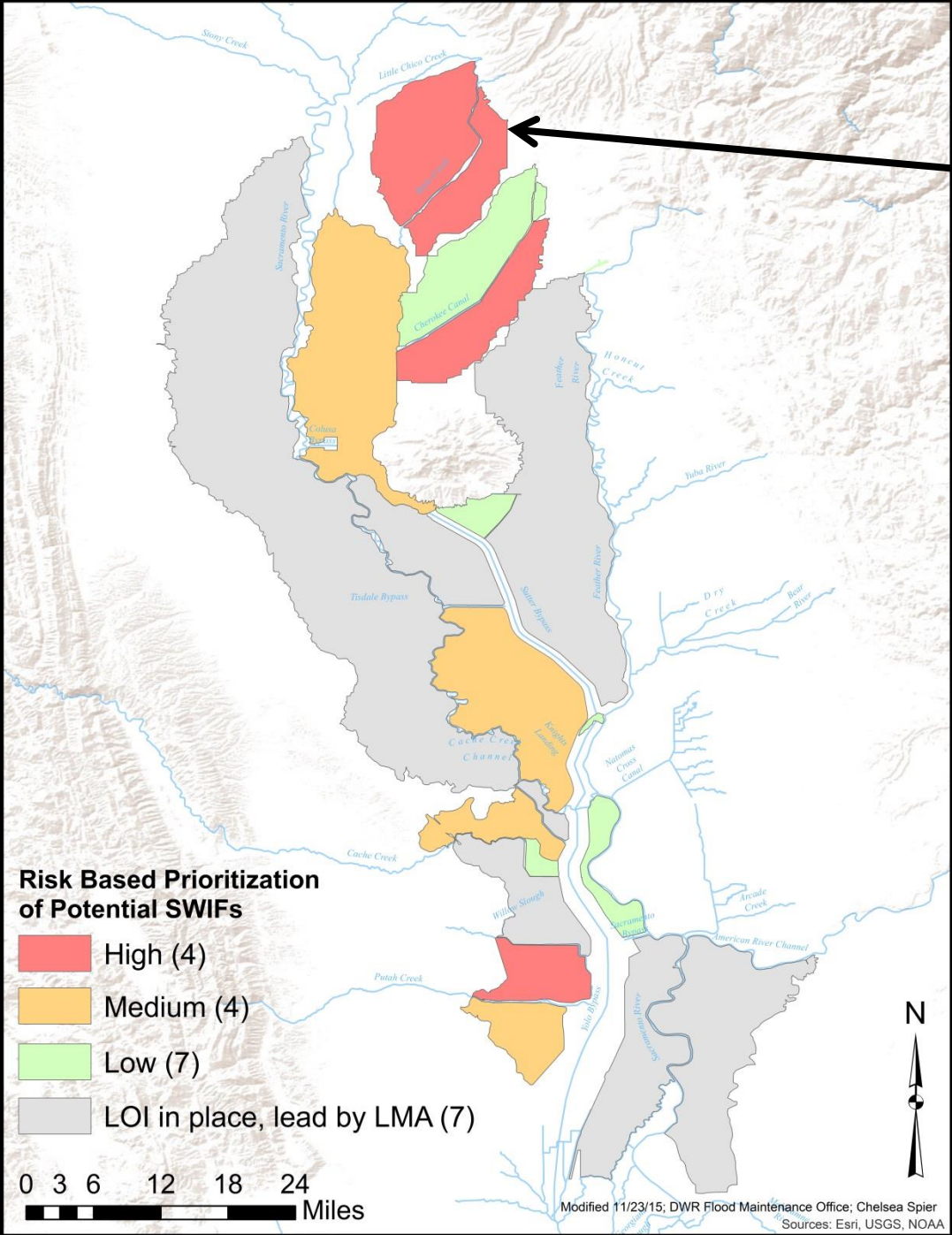
## Putah Creek- Yolo Bypass – Willow Slough

- Population Protected: 29,423
- Infrastructure Protected: Not Available
- Miles of Potential GGS Habitat: 12.3
- DWR sole levee maintainer
- WC: 8361

# High Priority SWIF Areas

## MA5 – Butte Creek L Bank

- Population Protected: 3,819
- Infrastructure Protected: \$627M
- Miles of Potential GGS Habitat: 10.3
- DWR sole levee maintainer
- WC: 12878



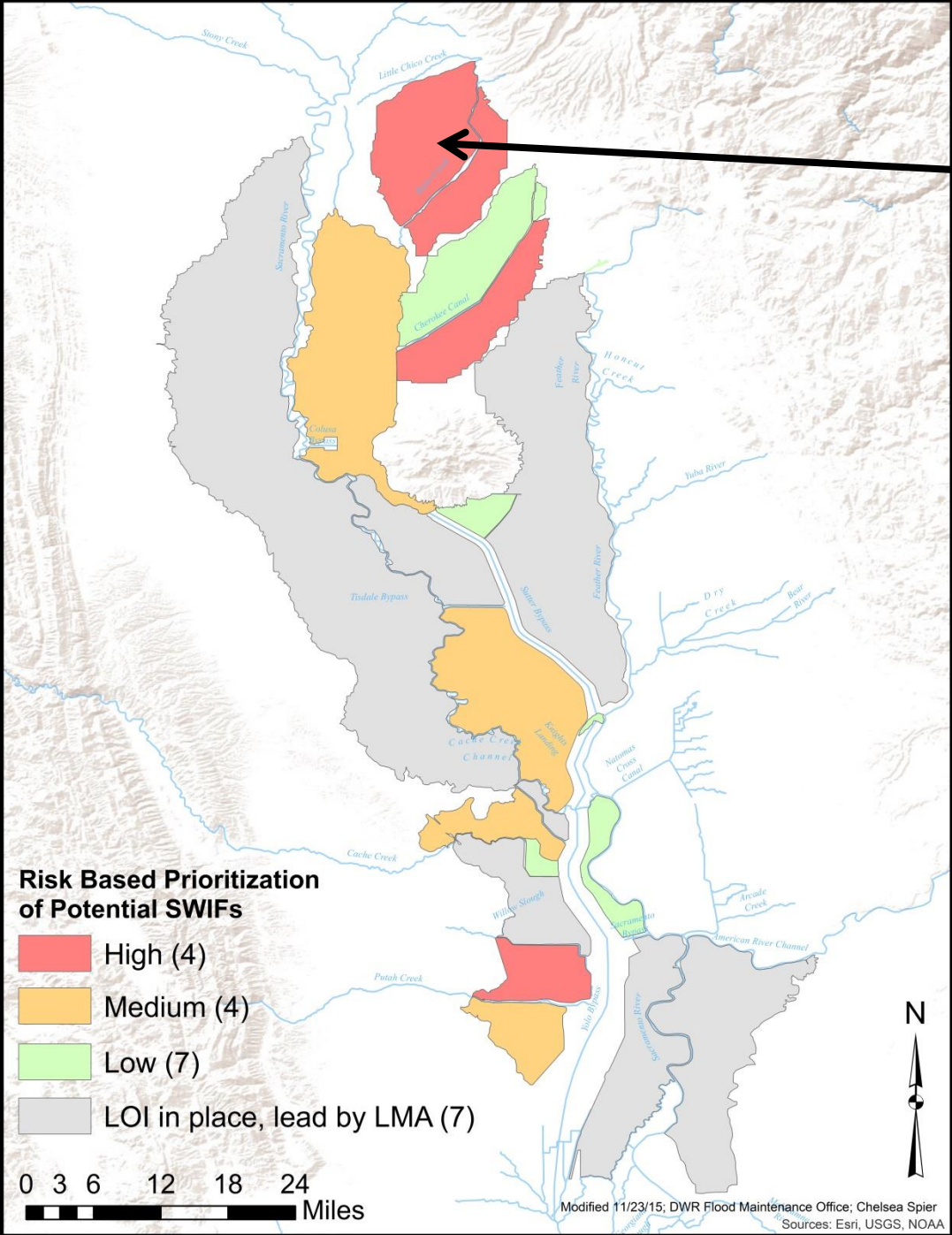




# High Priority SWIF Areas

## MA5 – Butte Creek R Bank

- Population Protected: 1,395
- Infrastructure Protected: \$141M
- Miles of Potential GGS Habitat: 6.7
- DWR sole levee maintainer
- WC: 12878

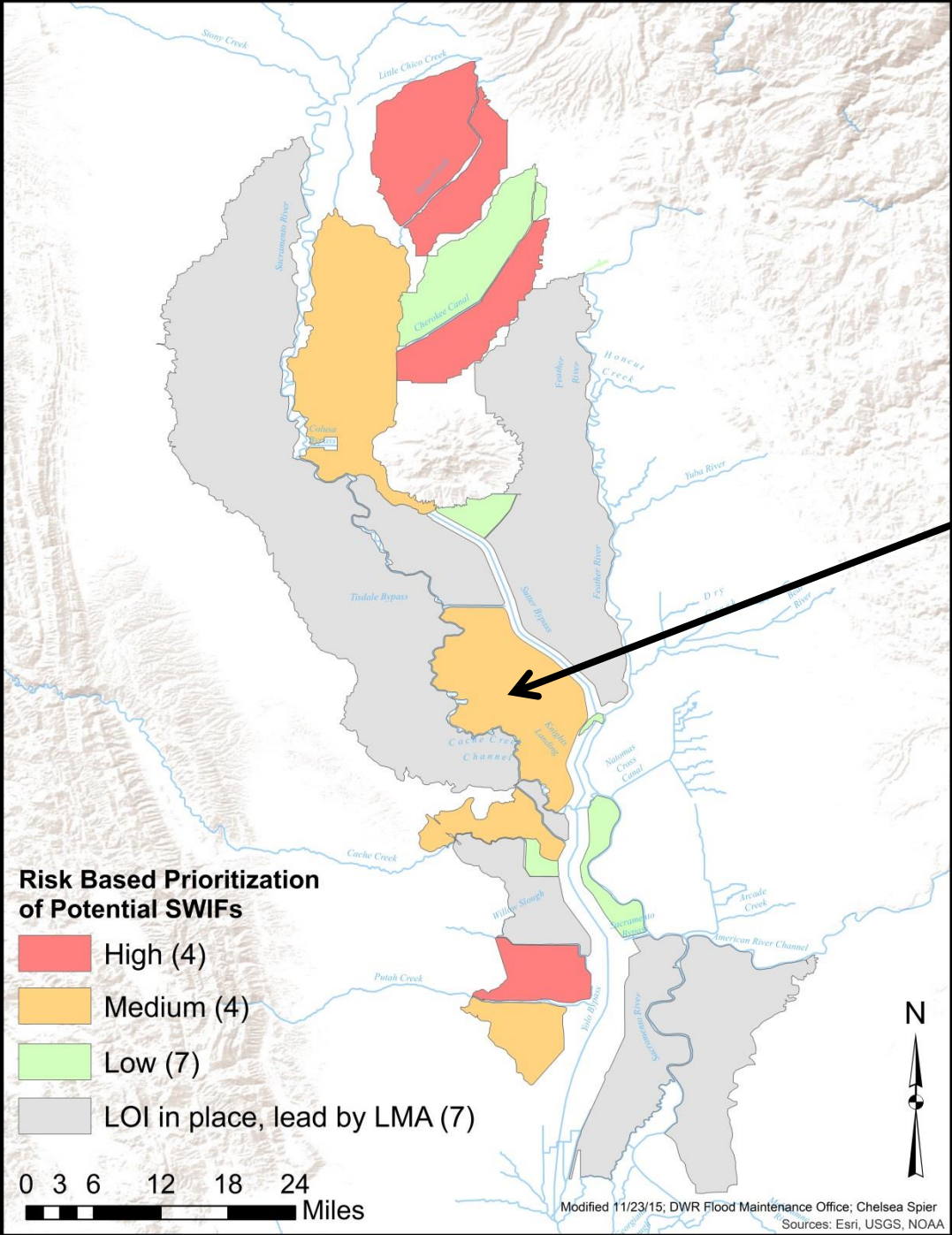




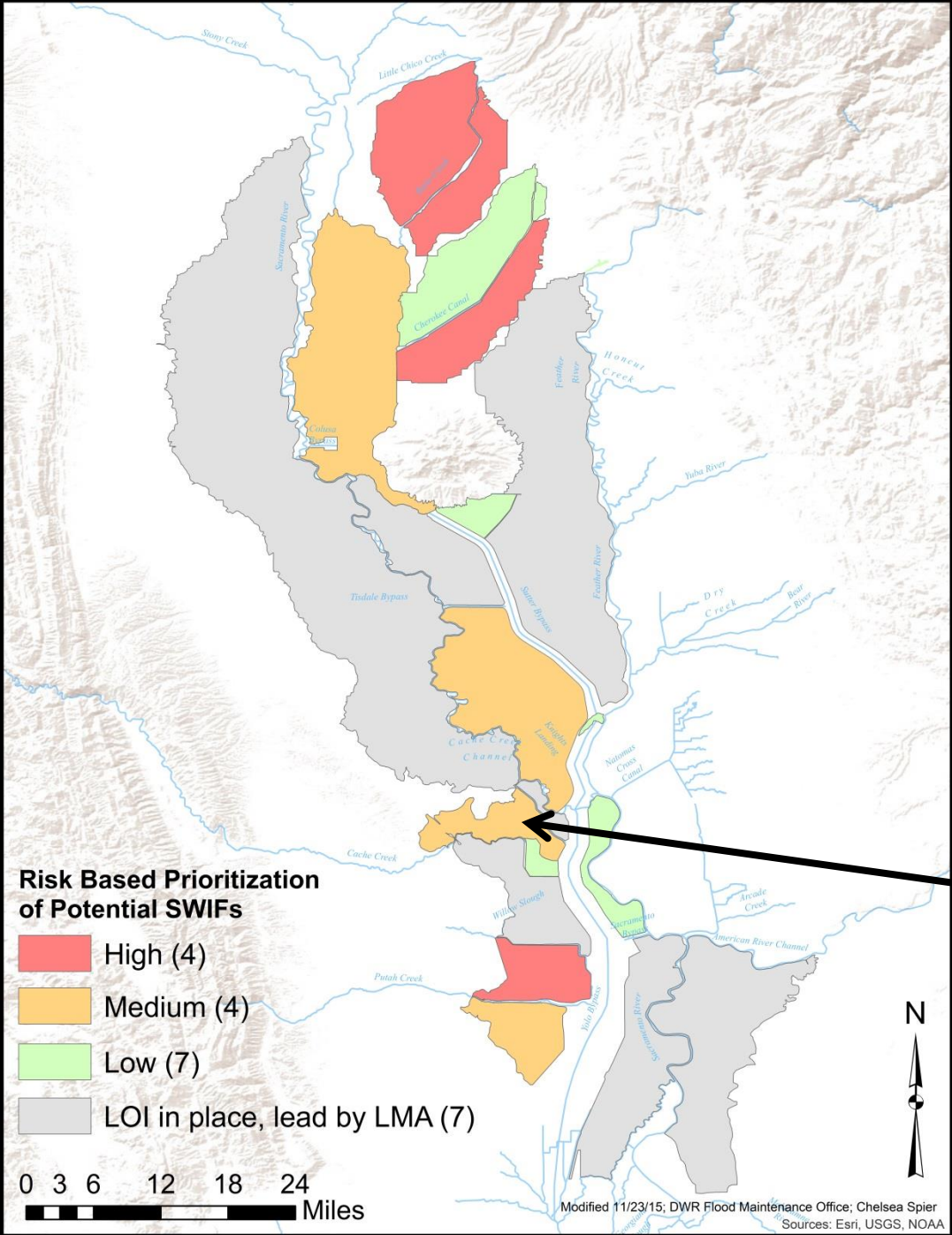
# Medium Priority SWIF Areas

**RD1500 and Tisdale Bypass**

- Population Protected: 908
- Infrastructure Protected: \$175M
- Miles of Potential GGS Habitat: 4.4
- DWR shares maintenance responsibilities
- WC: 8361



# Medium Priority SWIF Areas



**Cache Creek – Yolo Bypass – Knights Landing**

- Population Protected: 959
- Infrastructure Protected: \$65M
- Miles of Potential GGS Habitat: 3.4
- DWR shares maintenance responsibilities
- WC: 8361

**Risk Based Prioritization of Potential SWIFs**

- High (4)
- Medium (4)
- Low (7)
- LOI in place, lead by LMA (7)

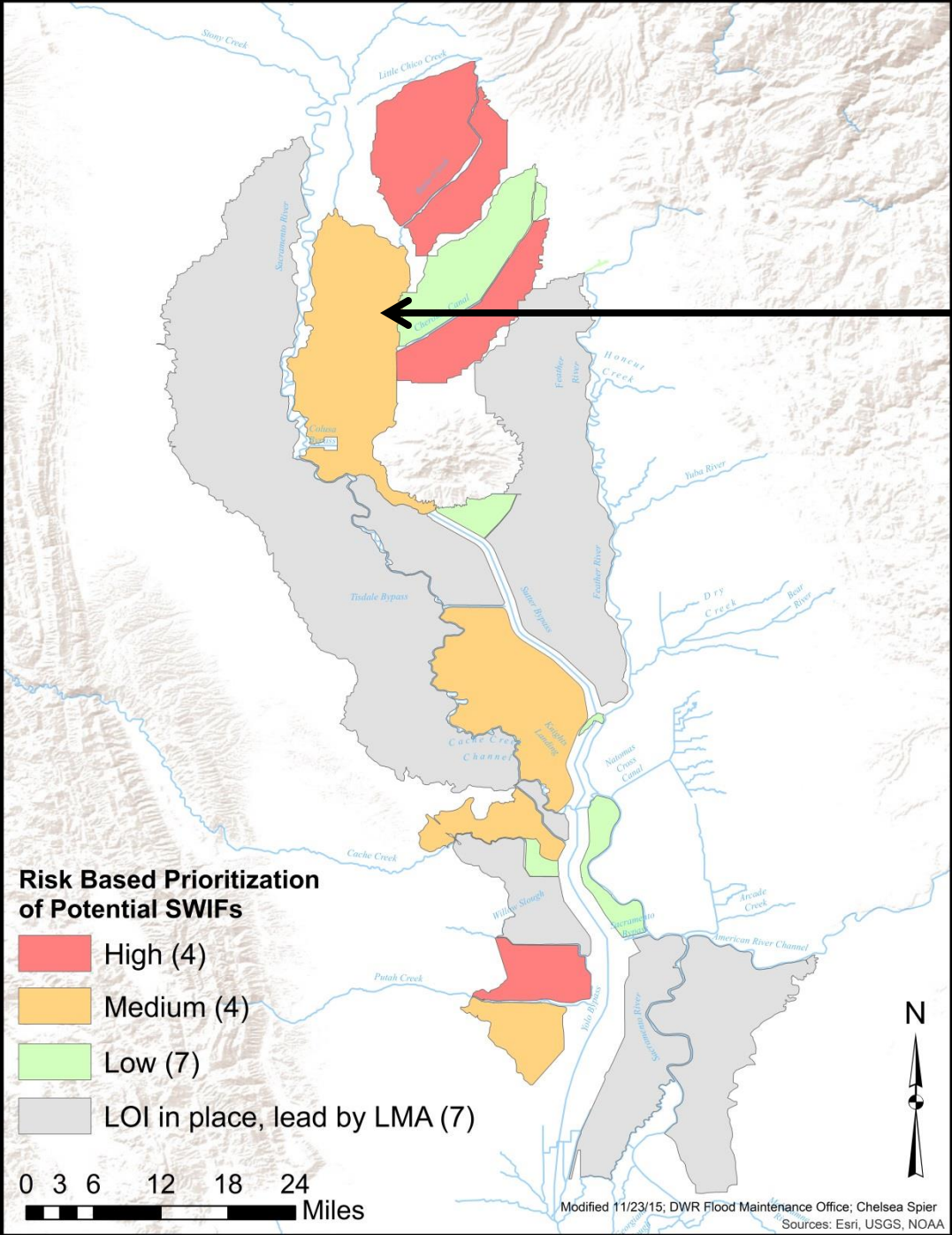
0 3 6 12 18 24 Miles

Modified 11/23/15; DWR Flood Maintenance Office; Chelsea Spier  
Sources: Esri, USGS, NOAA

# Medium Priority SWIF Areas

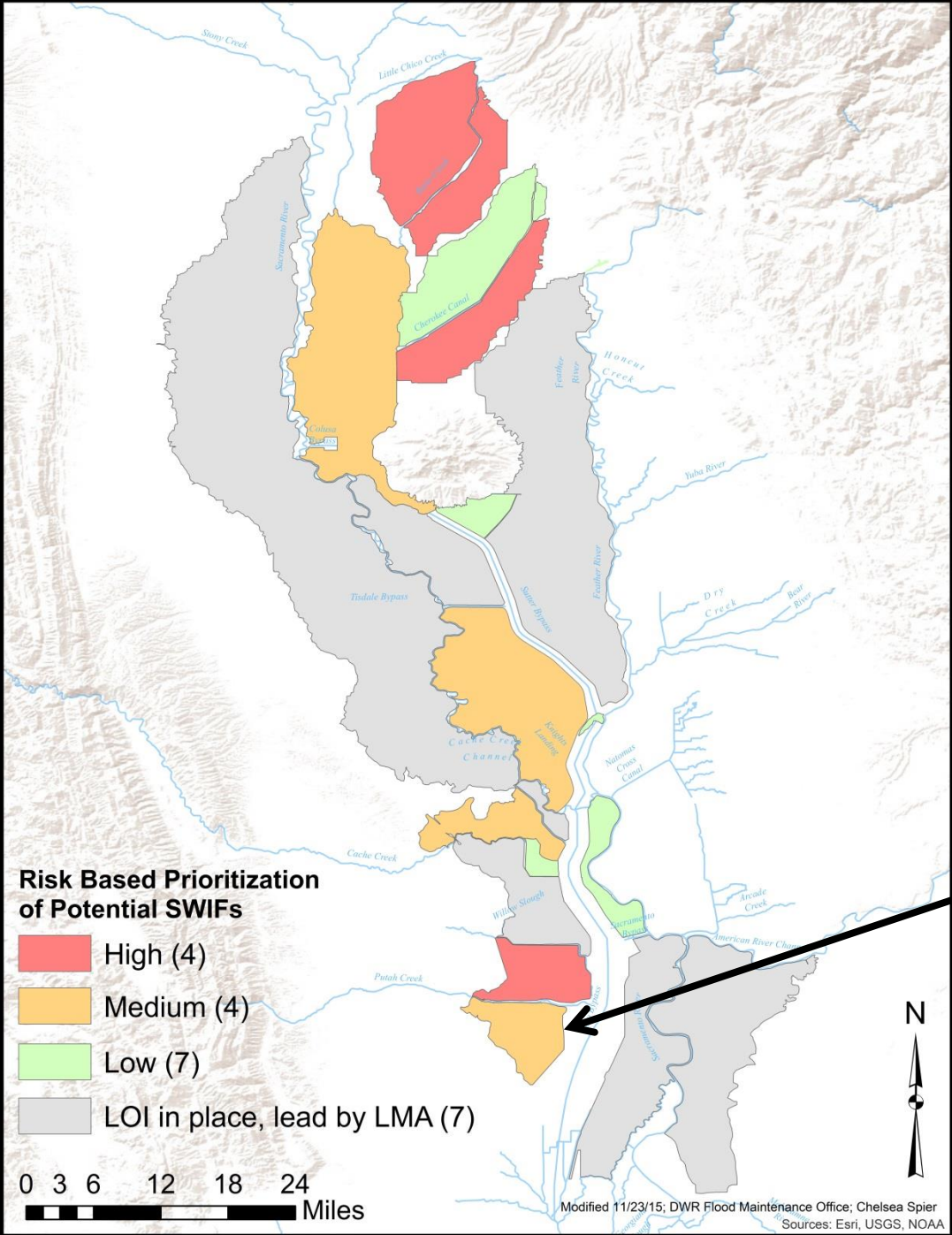
## Sacramento River East

- Population Protected: 681
- Infrastructure Protected: \$221
- Miles of Potential GGS Habitat: 2.6
- DWR shares maintenance responsibilities
- WC: 8361





# Medium Priority SWIF Areas



**Putah Creek R Bank**

- Population Protected: 555
- Infrastructure Protected: \$39M
- Miles of Potential GGS Habitat: 1.0
- DWR sole levee maintainer
- WC: 8361

## Low Priority SWIF Areas (Protected Populations are all <500)

- MA13 – Cherokee Canal North L Bank
- MA13 – Cherokee Canal R Bank
- Feather River – Hamilton – NE of Afterbay
- Wadsworth Canal – Sutter Bypass
- Feather River – Nelson Bend
- RD1600, 827, 785, and 537 – Sac Yolo North
- Yolo Bypass West Levee – Cache Creek

### Risk Based Prioritization of Potential SWIFs

- High (4)
- Medium (4)
- Low (7)
- LOI in place, lead by LMA (7)

0 3 6 12 18 24 Miles

Modified 11/23/15; DWR Flood Maintenance Office; Chelsea Spier  
Sources: Esri, USGS, NOAA

